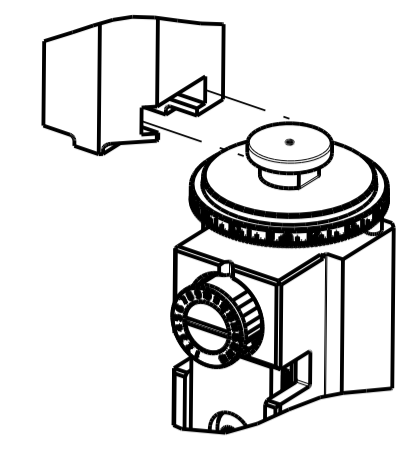


PART NUMBER	REVISION	DESCRIPTION	FEED TYPE
2266192-1	E	FINE CRIMP HEIGHT ADJUST	MECHANICAL
2266192-2	F	FINE CRIMP HEIGHT ADJUST	PNEUMATIC
7-2266192-1	E	MECHANICAL AND CRIMP TOOLING KIT	MECHANICAL
7-2266192-2	F	PNEUMATIC AND CRIMP TOOLING KIT	PNEUMATIC
7-2266192-7	A	CRIMP TOOLING KIT	-

ATLANTIC VERSION TERMINATOR INTERFACE ADAPTER



APPLICATOR DATA		
CRIMP	SIZE	TYPE
WIRE	2.29 mm (.090)	F
INSUL	-	-

APPLICATOR INSTRUCTIONS
408-35042

TERMINAL DATA: TE TERMINAL		TE CRIMP SPECIFICATION	
TERMINAL NAME: TAB, FASTON, .110 SERIES			
WIRE STRIP LENGTH		INSULATION DIAMETER RANGE	
3.58-4.34 mm (.141-.171 IN)		∅	-
TERMINAL APPLICATION SPECIFICATION	114-2036		
TERMINALS APPLIED			
TE TERMINAL	TE TERMINAL	TE TERMINAL	TE TERMINAL
63932-1	62384-1	62122-1	

WIRE SIZE	CRIMP HEIGHT mm [INCH]	CRIMP HEIGHT REFERENCE SETTING
18 AWG	1.55 +/- 0.05 [0.061 +/- .002]	5.6
20 AWG	1.45 +/- 0.05 [0.057 +/- .002]	6.5
22 AWG	1.40 +/- 0.05 [0.055 +/- .002]	7.1

- 1 RECOMMENDED SPARE PARTS
- 2 REFER TO SUPPLIED INSTRUCTION SHEET FOR CLEANING, LUBRICATION AND STORAGE OF APPLICATOR.
- 3 CRIMP HEIGHT REFERENCE SETTING WAS THE SETTING USED WHEN THE APPLICATOR WAS QUALIFIED AT THE FACTORY. ADJUSTMENT MAY BE NECESSARY WHEN RUNNING APPLICATOR IN THE FIELD.
- 4 TERMINAL LUBRICANT IS RECOMMENDED.
- 5. UNLESS SPECIFIED OTHERWISE TORQUE VALUES SHALL BE USED PER DOCUMENT, 101-35000.

***WARNING**
ON INSTALLATION, SET WIRE DISC TO CRIMP HEIGHT REFERENCE SETTING FOR LARGEST WIRE SIZE. CRIMP HEIGHT REFERENCE SETTINGS GREATER THAN THE VALUE SHOWN MAY CAUSE DAMAGE TO THE CRIMP TOOLING, REFER TO THE INSTRUCTION SHEET FOR PROPER SETUP AND ADJUSTMENTS.

ATLANTIC VERSION
Shown on sheets 1 of 4 & 2 of 4
(Pacific version shown on sheets 3 of 4 & 4 of 4)

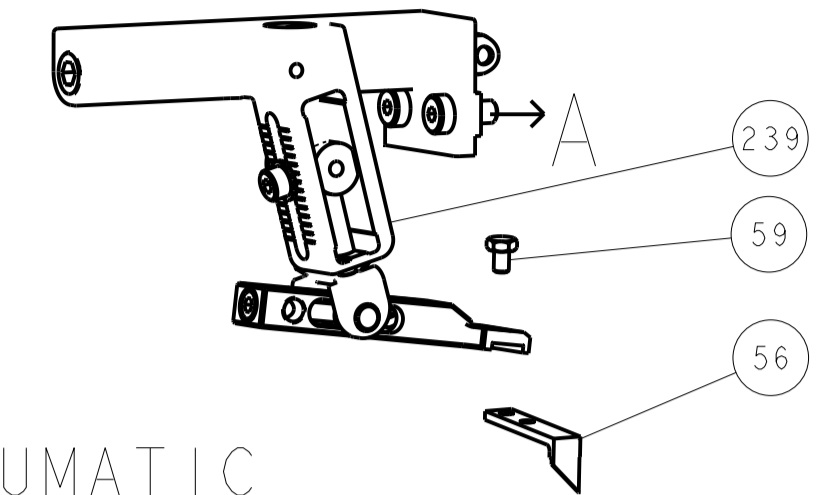
LOC	DIST	REVISIONS			
A	66	REV	DATE	BY	APPV
		C1	12FEB2018	TB	GB
		D	21FEB2018	MZ	TE
		E	22MAY2018	MEH	JDG
		F	27MAY2021	JAH	TE

-	1	-	1	-	2119641-1	FEED CAM, AIR FEED	248					
-	1	1	1	1	7-18023-7	SCR, SKT HD CAP M3 X 4.0	241					
-	-	1	-	1	2119580-1	MECHANICAL FEED ASSEMBLY	239					
-	1	-	1	-	2844940-1	AIR FEED MODULE	238					
-	REF	REF	REF	REF	994970-2	COUNTER, MAGNETIC	164					
-	1	1	1	1	2119955-1	ASSY, LUBRICATOR, SIDE FEED	113					
-	1	1	1	1	2844908-1	SCREW, LOCKING	99					
-	1	1	1	1	2844907-1	POST, LOCKING	98					
-	1	1	1	1	455888-6	SPACER, CRIMPER	82					
-	1	1	1	1	1803607-3	DOCUMENTATION PACKAGE	71					
-	1	1	1	1	2119740-1	TAG, IDENTIFICATION	67					
-	2	2	2	2	2168078-1	SCREW, DRIVE, RH, RoHS, 2 x .188	66					
-	1	1	1	1	2168083-2	SCR, SKT HD CAP, RoHS, M4 X 8.0	60					
-	1	1	1	1	5-18022-5	SCR, HEX HD CAP, M4 X 6.0	59					
-	1	1	1	1	1338685-1	PAWL, FEED	56					
-	4	4	4	4	2168083-3	SCR, SKT HD CAP, RoHS, M4 X 12.0	54					
-	2	2	2	2	1-2168083-0	SCR, SKT HD CAP, RoHS, M4 X 10	53					
-	1	1	1	1	5018030-1	NUT, HEX, REG, RoHS, M3	52					
-	1	1	1	1	811242-5	BUMPER, HOLD DOWN	51					
-	1	1	1	1	690753-2	SPACER, TONKER	50					
-	1	2	1	2	18023-9	SCR, SKT HD CAP M4 X 6.0	49					
-	-	1	-	1	2119652-1	FEED CAM, PRE FEED	48					
-	-	1	-	1	2119653-1	FEED CAM, POST FEED	47					
-	1	1	1	1	1803583-9	APPLICATOR BASIC ASSEMBLY, SF	46					
-	1	1	1	1	1803515-1	RAM ASSEMBLY, SF ATLANTIC	44					
-	1	1	1	1	1803602-1	SCR, BHSC, RoHS (M8 X 25)	41					
-	1	1	1	1	1752356-1	SUPPORT, TERMINAL	34					
-	2	2	2	2	2079383-5	SCR, BHSC, RoHS (M4 X 20)	33					
-	2	2	2	2	2-2844962-4	SPACER, CYLINDRICAL, STRIP GUIDE	30					
-	1	1	1	1	2844992-4	ASSEMBLY, STRIP GUIDE	29					
-	1	1	1	1	455888-3	SPACER, CRIMPER	28					
-	1	1	1	1	240792-1	DRAG, TERMINAL	25					
-	1	1	1	1	1320928-2	STRIP GUIDE	24					
-	1	1	1	1	2168083-2	SCR, SKT HD CAP, RoHS, M4 X 8.0	21					
-	2	2	2	2	1-18028-2	WASHER, FLAT, REG M4	20					
-	1	1	1	1	2119533-1	STRIPPER, SIDE FEED	19					
-	1	1	1	1	2119806-1	INSERT, SHEAR	13					
-	1	1	1	1	3-22280-3	SPRING, COMPRESSION	12					
-	1	1	1	1	1-356885-4	STOP, SHEAR	11					
-	1	1	1	1	2119805-1	SHEAR HOLDER, FRONT	10					
-	1	1	1	1	1803095-1	FLOATING SHEAR, FRONT	9					
-	1	2	2	1	1-1633933-6	ANVIL, COMBINATION	8					
-	-	-	-	-	-	-	7					
-	-	-	-	-	-	-	6					
-	1	1	1	1	2119757-8	DEPRESSOR, SHEAR	5					
-	-	-	-	-	-	-	4					
-	-	-	-	-	-	-	3					
-	-	-	-	-	-	-	2					
-	1	2	2	1	1	4-456406-1	CRIMPER, WIRE PREMIUM	1				
-	77	-	72	-	71	-	2	-	1	PART NO	DESCRIPTION	ITEM NO

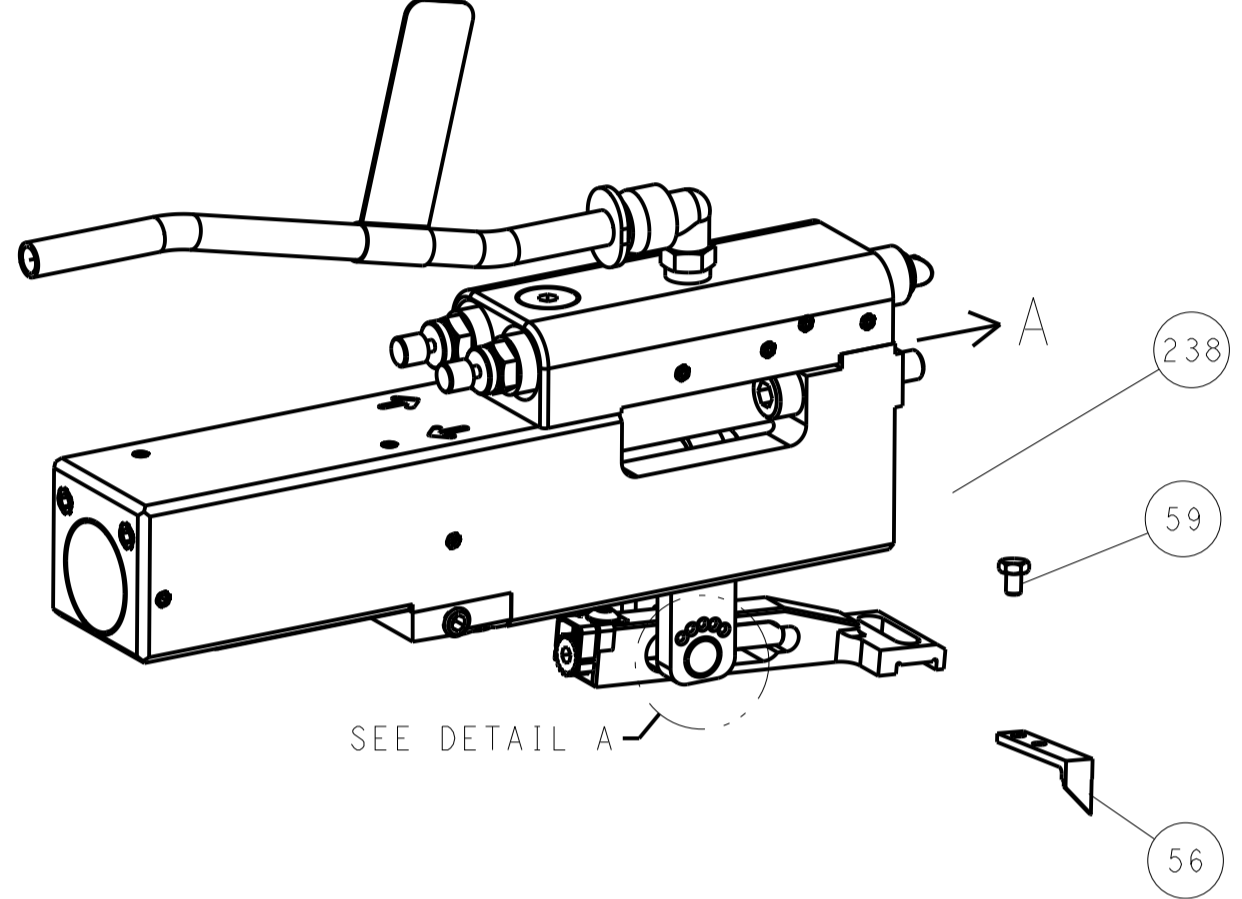
DIMENSIONS:		TOLERANCES UNLESS OTHERWISE SPECIFIED:		DWG: X. ZHAO 07JAN2014		CHK: L. ZHANG 07JAN2014		APVD: T. ELBIN 07JAN2014		NAME: Ocean Side Feed Applicator	
mm	0 PLC ±	1 PLC ±	2 PLC ±	3 PLC ±	4 PLC ±	PRODUCT SPEC		APPLICATION SPEC		SIZE: A1 00779 C=2266192	
MATERIAL:	FINISH:	WEIGHT:		SCALE: 1:2		SHEET: 1 of 4		REV: F		Customer Accessible Production Drawing	

REVISONS		DATE	OWN	APVD
LOC	DIST			
A	66			
P	LTN	DESCRIPTION		
		SEE SHEET 1		

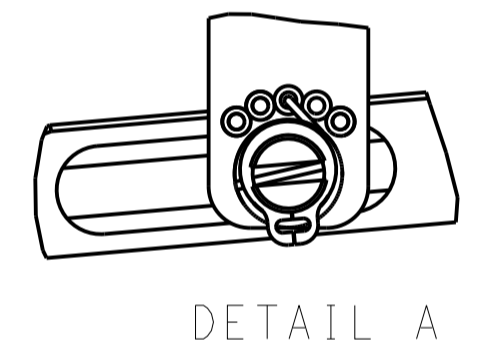
FEED TYPE MECHANICAL



PNEUMATIC

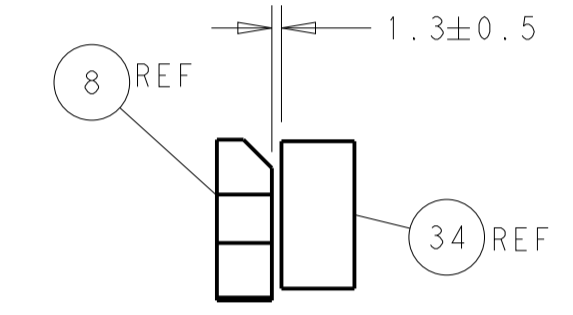
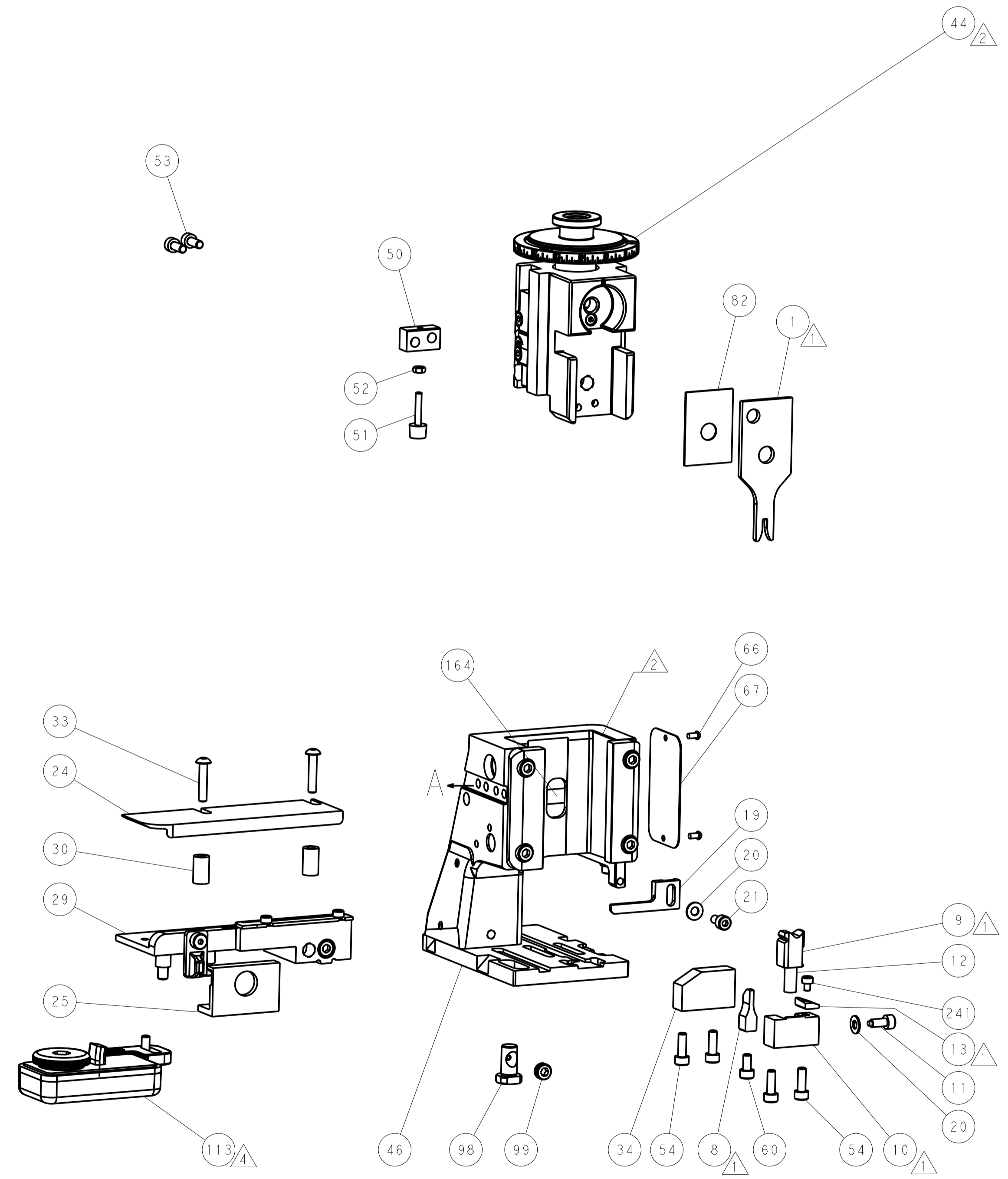
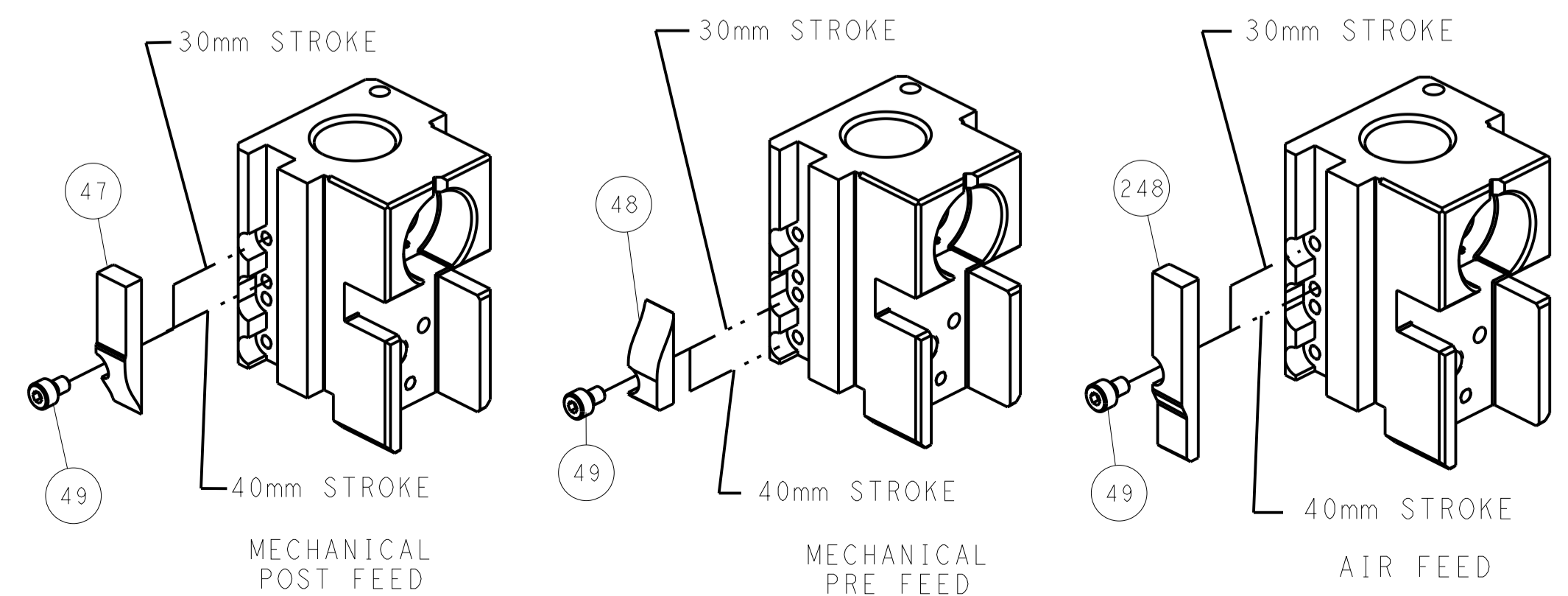


FEED SPRING SETTING POSITION (SHOWN FROM REAR SIDE)

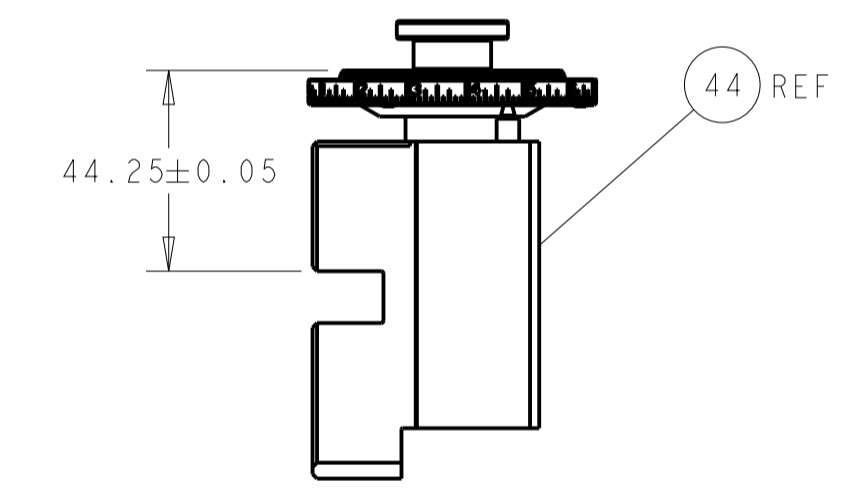
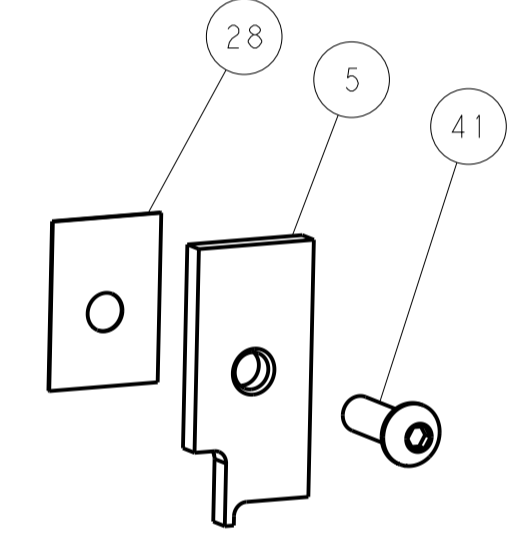


DETAIL A

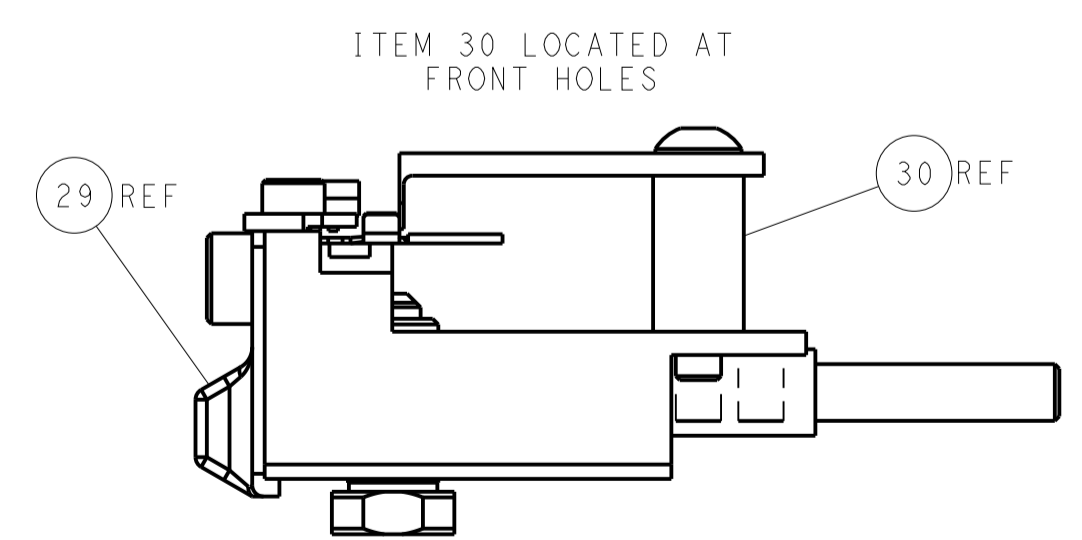
CAM POSITIONS



TERMINAL SUPPORT LOCATION



RAM SET-UP



ITEM 30 LOCATED AT FRONT HOLES

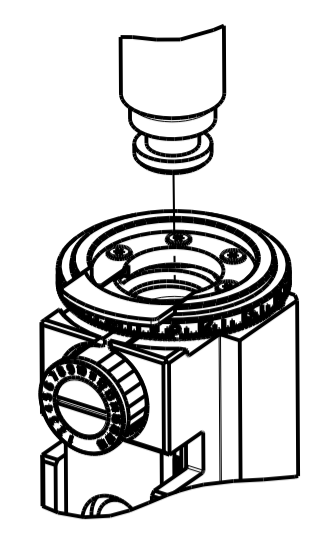
FEED TRACK POSITION GUIDE BY WIRE BARREL

ATLANTIC VERSION
 Shown on sheets 1 of 4 & 2 of 4
 (Pacific version shown on sheets 3 of 4 & 4 of 4)

DIMENSIONS:		TOLERANCES UNLESS OTHERWISE SPECIFIED:		DWG: X.ZHAO 07JAN2014		TE Connectivity	
mm	0 PLC	±		CHK: L.ZHANG 07JAN2014	NAME	Ocean Side Feed Applicator	
	1 PLC	±		APVD: J.ELBIN 07JAN2014	PRODUCT SPEC	SIZE	CAGE CODE DRAWING NO
	2 PLC	±			APPLICATION SPEC	A11	00779 ©=2266192
	3 PLC	±			RESTRICTED TO	Customer Accessible Production Drawing	
	4 PLC	±			SCALE	1:2	SHEET 2 OF 4 REV F
	ANGLES	±			SHEETS 3 & 4 ARE NOT REQUIRED FOR ATLANTIC VERSION		

PART NUMBER	REVISION	DESCRIPTION	FEED TYPE
2-2266192-1	E	FINE CRIMP HEIGHT ADJUST	MECHANICAL
2-2266192-2	F	FINE CRIMP HEIGHT ADJUST	PNEUMATIC
7-2266192-7	A	CRIMP TOOLING KIT	-

PACIFIC VERSION TERMINATOR
 INTERFACE ADAPTER

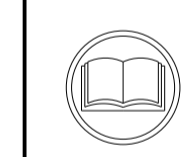


APPLICATOR DATA		
CRIMP	SIZE	TYPE
WIRE	2.29 mm [.090]	F
INSUL	-	-

APPLICATOR INSTRUCTIONS
 408-35042

TERMINAL DATA: TE TERMINAL		TE CRIMP SPECIFICATION	
TERMINAL NAME: TAB, FASTON, .110 SERIES			
WIRE STRIP LENGTH 3.58-4.34 mm [1.41-.171 IN]		INSULATION DIAMETER RANGE Ø -	
TERMINAL APPLICATION SPECIFICATION	114-2036	-	-
TERMINALS APPLIED			
TE TERMINAL	TE TERMINAL	TE TERMINAL	TE TERMINAL
63932-1	62384-1	62122-1	

WIRE SIZE	CRIMP HEIGHT mm [INCH]	CRIMP HEIGHT REFERENCE SETTING
18 AWG	1.55+/-0.05 [0.061+/-0.002]	5.6
20 AWG	1.45+/-0.05 [0.057+/-0.002]	6.5
22 AWG	1.40+/-0.05 [0.055+/-0.002]	7.1



- 1. RECOMMENDED SPARE PARTS
- 2. REFER TO SUPPLIED INSTRUCTION SHEET FOR CLEANING, LUBRICATION AND STORAGE OF APPLICATOR.
- 3. CRIMP HEIGHT REFERENCE SETTING WAS THE SETTING USED WHEN THE APPLICATOR WAS QUALIFIED AT THE FACTORY. ADJUSTMENT MAY BE NECESSARY WHEN RUNNING APPLICATOR IN THE FIELD.
- 4. TERMINAL LUBRICANT IS RECOMMENDED.
- 5. UNLESS SPECIFIED OTHERWISE TORQUE VALUES SHALL BE USED PER DOCUMENT, 101-35000.

***WARNING**
 ON INSTALLATION, SET WIRE DISC TO CRIMP HEIGHT REFERENCE SETTING FOR LARGEST WIRE SIZE. CRIMP HEIGHT REFERENCE SETTINGS GREATER THAN THE VALUE SHOWN MAY CAUSE DAMAGE TO THE CRIMP TOOLING, REFER TO THE INSTRUCTION SHEET FOR PROPER SETUP AND ADJUSTMENTS.

PACIFIC VERSION
 Shown on sheets 3 of 4 & 4 of 4
 (Atlantic version shown on sheets 1 of 4 & 2 of 4)

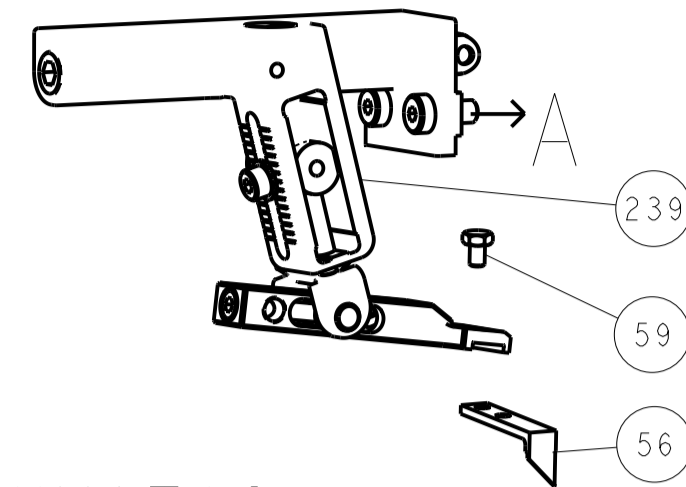
LOC	DIST	REV	DATE	BY	APPV
A	66	-	-	-	-

REV	DATE	BY	APPV	DESCRIPTION	DATE	BY	APPV
-	1	1		7-18023-7	SCR, SKT HD CAP M3 X 4.0		241
-	-	1		2119580-1	MECHANICAL FEED ASSEMBLY		239
-	1	-		2844940-1	AIR FEED MODULE		238
-	REF	REF		994970-2	COUNTER, MAGNETIC		164
-	1	-		2119641-2	FEED CAM, AIR FEED		151
-	1	1		2168083-8	SCR, SKT HD CAP, RoHS, M4 X 16		144
-	4	4		2168083-9	SCR, SKT HD CAP, RoHS, M4 X 20		143
-	-	1		2119653-2	FEED CAM, POST FEED		142
-	1	1		1-1803583-0	APPLICATOR BASIC ASSEMBLY, SF		141
-	1	1		1803516-1	RAM ASSEMBLY, SF PACIFIC		140
4	1	1		2119955-1	ASSY, LUBRICATOR, SIDE FEED		113
-	1	1		2844908-1	SCREW, LOCKING		99
-	1	1		2844907-1	POST, LOCKING		98
-	1	1		455888-6	SPACER, CRIMPER		82
-	1	1		1803607-3	DOCUMENTATION PACKAGE		71
-	1	1		2119740-1	TAG, IDENTIFICATION		67
-	2	2		2168078-1	SCREW, DRIVE, RH, RoHS, 2 x .188		66
-	1	1		5-18022-5	SCR, HEX HD CAP, M4 X 6.0		59
-	1	1		1338685-1	PAWL, FEED		56
-	2	2		1-2168083-0	SCR, SKT HD CAP, RoHS, M4 X 10		53
-	1	1		5018030-1	NUT, HEX, REG, RoHS, M3		52
-	1	1		811242-5	BUMPER, HOLD DOWN		51
-	1	1		690753-2	SPACER, TONKER		50
-	1	2		18023-9	SCR, SKT HD CAP M4 X 6.0		49
-	-	1		2119652-1	FEED CAM, PRE FEED		48
-	1	1		1803602-1	SCR, BHSC, RoHS (M8 X 25)		41
-	1	1		1752356-1	SUPPORT, TERMINAL		34
-	2	2		2079383-5	SCR, BHSC, RoHS (M4 X 20)		33
-	2	2		2-2844962-4	SPACER, CYLINDRICAL, STRIP GUIDE		30
-	1	1		2844992-4	ASSEMBLY, STRIP GUIDE		29
-	1	1		455888-3	SPACER, CRIMPER		28
-	1	1		240792-1	DRAG, TERMINAL		25
-	1	1		1320928-2	STRIP GUIDE		24
-	1	1		2168083-2	SCR, SKT HD CAP, RoHS, M4 X 8.0		21
-	2	2		1-18028-2	WASHER, FLAT, REG M4		20
-	1	1		2119533-1	STRIPPER, SIDE FEED		19
4	1	1		2119806-1	INSERT, SHEAR		13
-	1	1		3-22280-3	SPRING, COMPRESSION		12
-	1	1		1-356885-4	STOP, SHEAR		11
4	1	1		2119805-1	SHEAR HOLDER, FRONT		10
4	1	1		1803095-1	FLOATING SHEAR, FRONT		9
4	1	1		2-1633933-6	ANVIL, COMBINATION		8
-	-	-		-	-		7
-	-	-		-	-		6
-	1	1		2119757-8	DEPRESSOR, SHEAR		5
-	-	-		-	-		4
-	-	-		-	-		3
-	-	-		-	-		2
4	1	1		4-456406-1	CRIMPER, WIRE PREMIUM		1

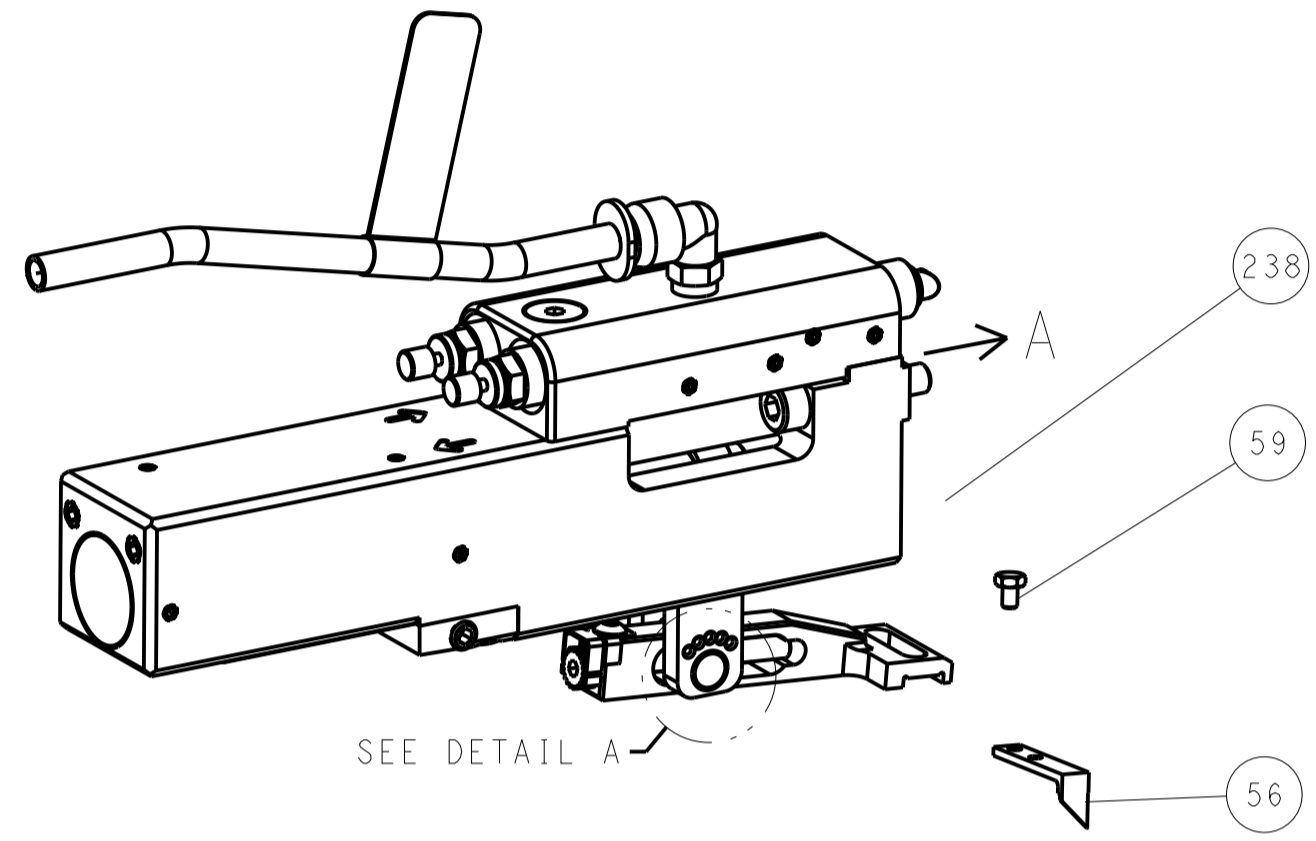
DIMENSIONS:		TOLERANCES UNLESS OTHERWISE SPECIFIED:		MATERIAL:		FINISH:		WEIGHT:		SCALE:	
mm	0 PLC ±	1 PLC ±	2 PLC ±	3 PLC ±	4 PLC ±	ANGLES	FINISH	WT	SCALE	1:2	SHEET 3 OF 4

LOC		DIST		REVISIONS			
A	66	P	LTM	DESCRIPTION	DATE	DWN	APVD
		-	-	SEE SHEET 1	-	-	-

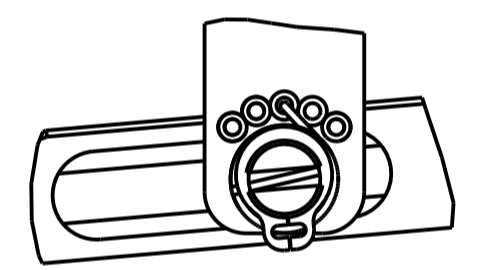
FEED TYPE MECHANICAL



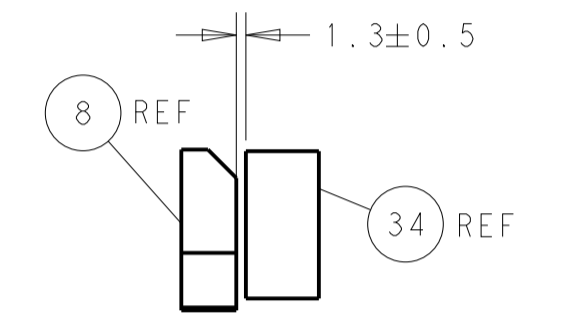
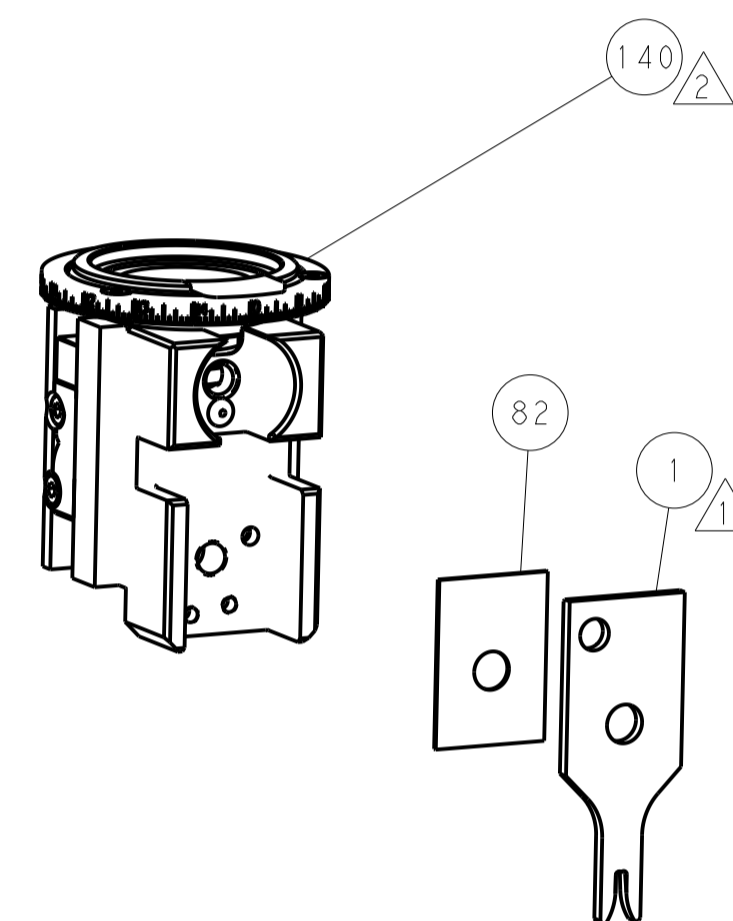
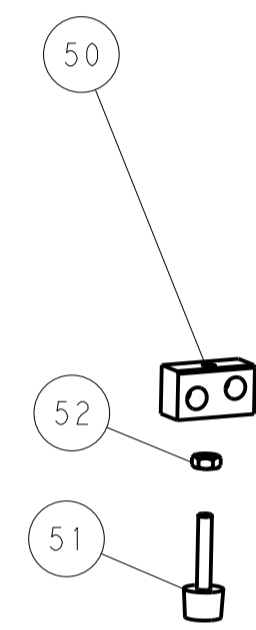
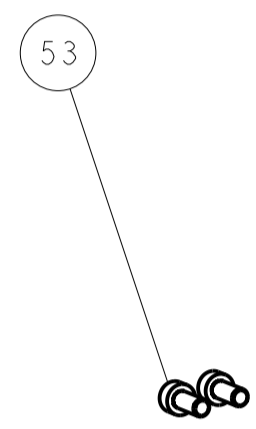
PNEUMATIC



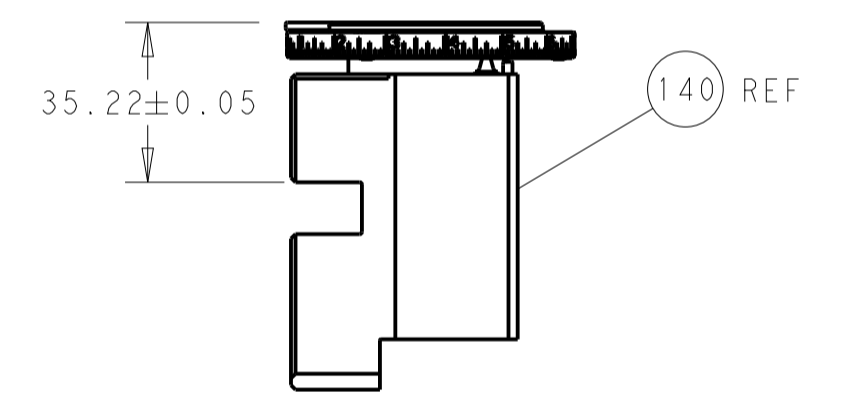
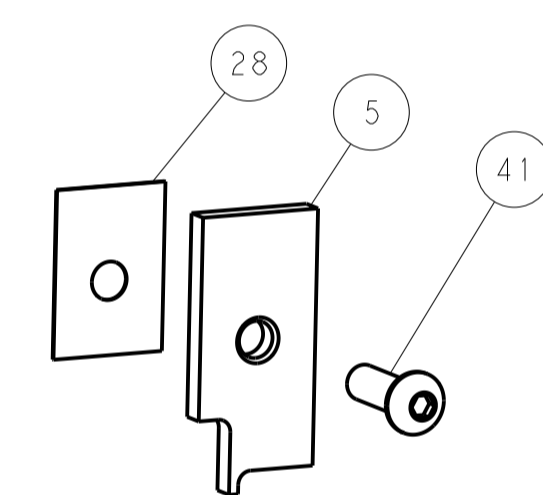
FEED SPRING SETTING POSITION (SHOWN FROM REAR SIDE)



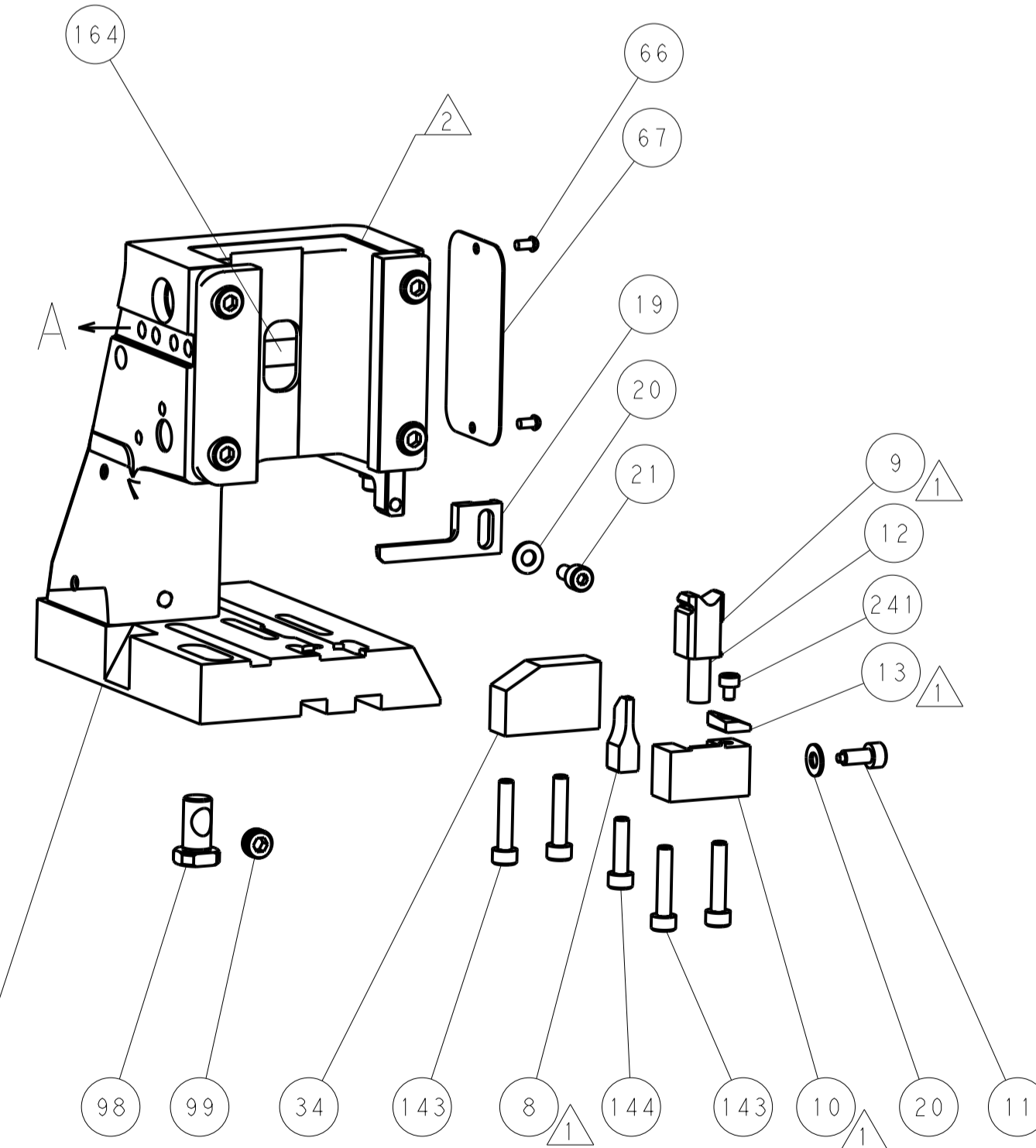
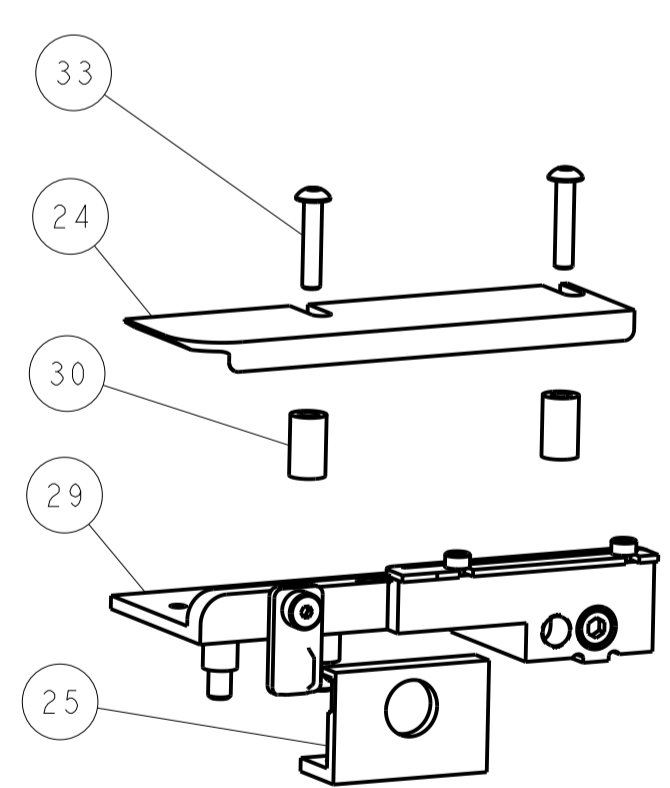
DETAIL A



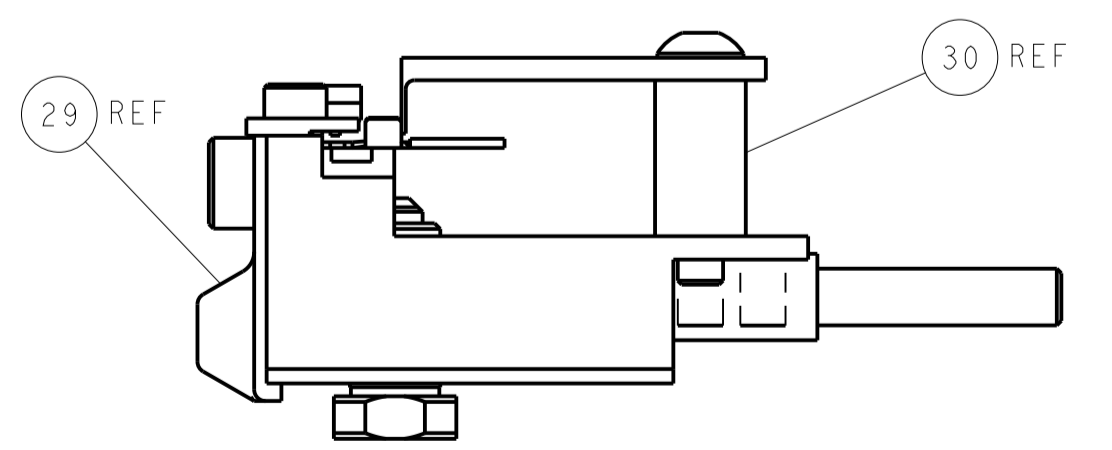
TERMINAL SUPPORT LOCATION



RAM SET-UP

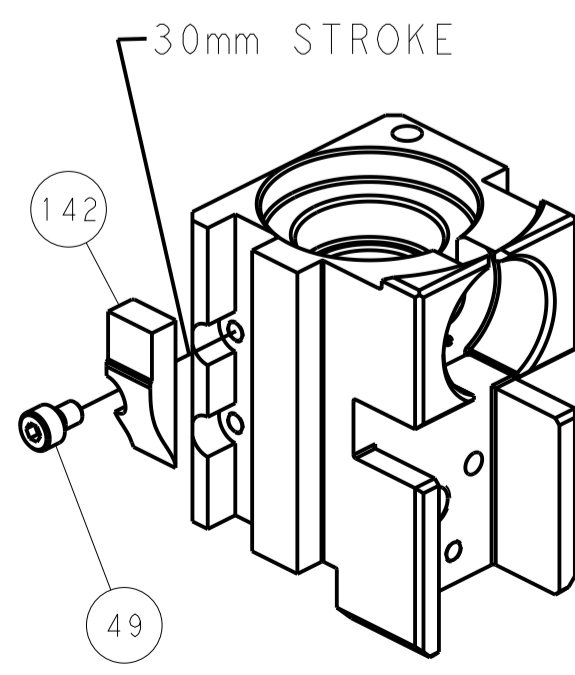


ITEM 30 LOCATED AT FRONT HOLES

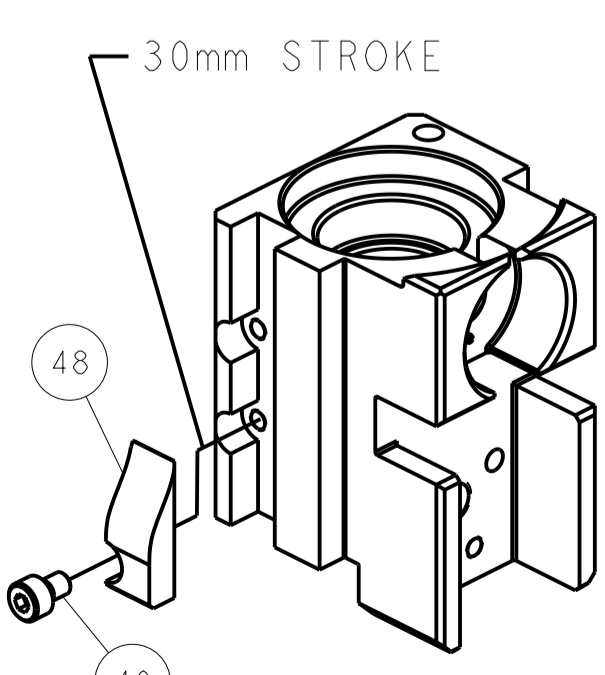


FEED TRACK POSITION GUIDE BY WIRE BARREL

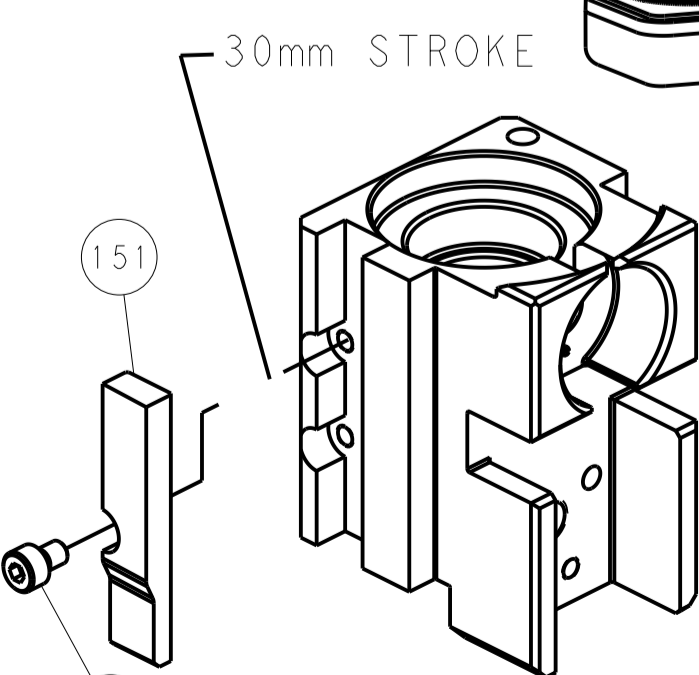
CAM POSITIONS



MECHANICAL POST FEED



MECHANICAL PRE FEED



AIR FEED

PACIFIC VERSION
 Shown on sheets 3 of 4 & 4 of 4
 (Atlantic version shown on sheets 1 of 4 & 2 of 4)

DIMENSIONS:		TOLERANCES UNLESS OTHERWISE SPECIFIED:		DWN X ZHAO 07JAN2014		TE Connectivity	
mm	0 PLC ±	1 PLC ±	2 PLC ±	3 PLC ±	4 PLC ±	5 PLC ±	Harrisburg, PA 17105-3608
MATERIAL:		FINISH:		CHK L ZHANG 07JAN2014		NAME	
				APVD T ELBIN 07JAN2014		Ocean Side Feed Applicator	
				PRODUCT SPEC		SIZE CAGE CODE DRAWING NO	
				APPLICATION SPEC		A1 00779 C=2266192	
				WEIGHT		RESTRICTED TO	
				Customer Accessible Production Drawing		SCALE 1:2 SHEET 4 OF 4 REV F	