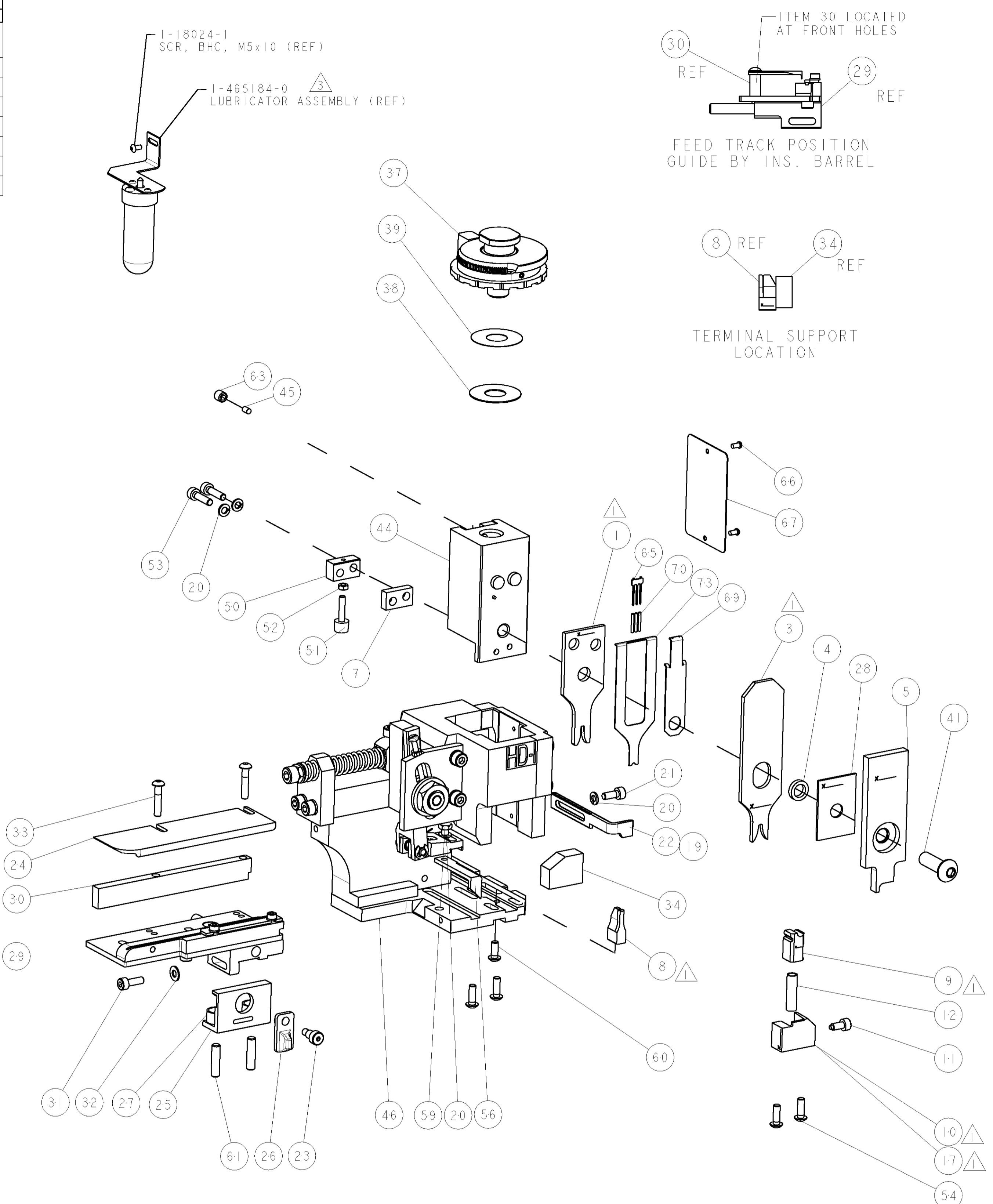
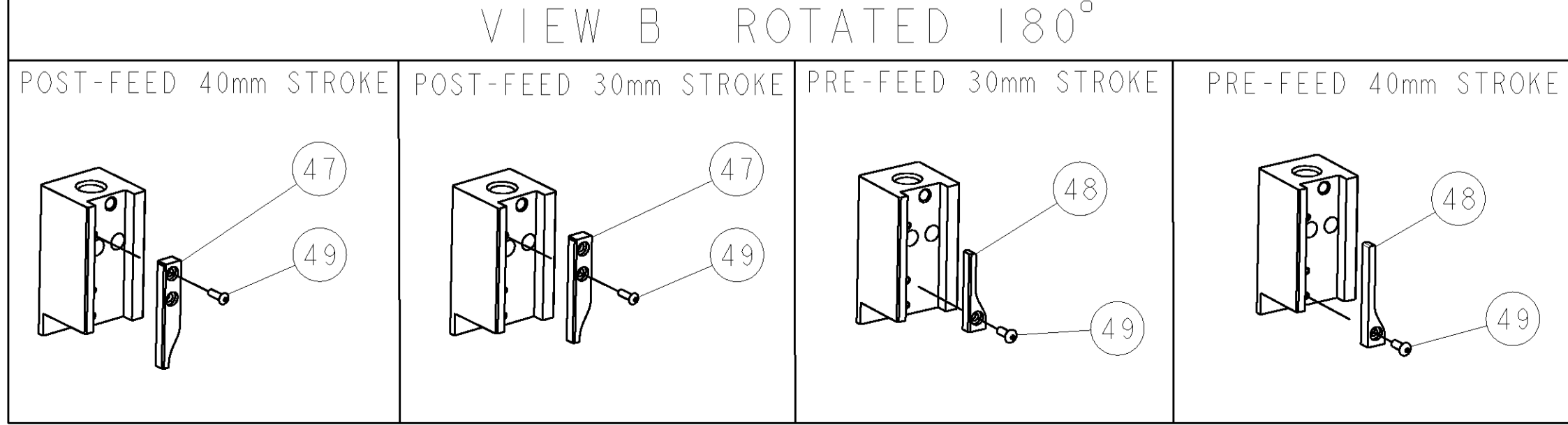


PART NUMBER	REV	TERMINATOR	FEED TYPE	DESCRIPTION
1528590-1	B	LEADMAKER	MECH POST FEED	CUTS CARRIER
1528590-2	B	BENCH	MECH PRE FEED	CUTS CARRIER
1528590-6	B	LEADMAKER	MECH POST FEED	CONTINUOUS CARRIER
7-1528590-1	B	LEADMAKER	MECH POST FEED	-1 AND SPARE PARTS
7-1528590-2	B	BENCH	MECH PRE FEED	-2 AND SPARE PARTS
7-1528590-6	B	LEADMAKER	MECH POST FEED	-6 AND SPARE PARTS
7-1528590-7	A	-	-	SPARE PARTS KIT

CRIMP DATA		TE TERMINAL	TE CRIMP SPEC
TERMINAL NAME: 1.6mm ROUND SYSTEM CONTACT			
CRIMP	SIZE	TYPE	RANGE
WIRE	2.03 [1.080 IN]	F	0.50-1.00mm ²
INSUL	2.79 [1.110 IN]	OV	1.40-2.70 [1.055-1.106 IN]
WIRE STRIP LENGTH 3.90-4.70 [1.54-1.85 IN]		APPL INSTRUCTIONS 408-8322 & 408-8490	
TERMINAL APPL SPEC 114-20121		FEED 12.50 [1.492 IN]	
TERMINALS APPLIED			
PIN	SOCKET	-	-
1437709-7	1-1437709-0	-	-
1-1437709-2	1-1437709-5	-	-
-	1437709-2	-	-
-	2-1437709-8	-	-
WIRE SIZE	CRIMP HEIGHT	REF SETTING	
1.00 mm ²	1.33 ± 0.05 [1.052 ± 0.002 IN]	B1	
0.50 + 0.50 mm ²	1.33 ± 0.05 [1.052 ± 0.002 IN]	B1	
0.50 + 0.35 mm ²	1.27 ± 0.05 [1.050 ± 0.002 IN]	B6	
0.75 mm ²	1.24 ± 0.05 [1.049 ± 0.002 IN]	B8	
0.35 + 0.35 mm ²	1.21 ± 0.05 [1.048 ± 0.002 IN]	C0	
0.50 mm ²	1.15 ± 0.05 [1.045 ± 0.002 IN]	C4	

- RECOMMENDED SPARE PARTS.
- GREASE RAM, CAM, CAM FOLLOWER AND FEED ROD LIGHTLY.
- CERTAIN TERMINALS REQUIRE LUBRICATION. REFER TO THE APPLICATOR INSTRUCTION SHEET FOR MORE INFORMATION.
- LUBRICATE DAILY PER THE APPLICATOR INSTRUCTION SHEET SUPPLIED WITH THE APPLICATOR.



* WARNING
ON INSTALLATION, SET WIRE DISC TO LARGEST WIRE SIZE SETTING. USE OF SETTINGS BELOW MIN. REQUIRED CRIMP HEIGHT SETTING WILL CAUSE DAMAGE TO CRIMP TOOLING.

PART NO	DESCRIPTION	ITEM NO
-	-	84
-	-	83
-	-	82
-	-	81
-	-	80
-	-	79
-	-	78
-	-	77
-	-	76
-	-	75
-	-	74
-77	-76	-72
-71	-6	-2
-1	-	-
PART NO	DESCRIPTION	ITEM NO

SET UP GAGE 458637-3		LOC	DIST	REVISIONS			
A	66			REV	DATE	BY	APPV
				A	04APR2006	DP	MC
				B	16JUN2009	LG	GB

QTY	DESCRIPTION	ITEM NO
-	-	73
-	-	72
-	-	71
- 3	3 3 3 3 3 3 3	1338705-3 DOCUMENTATION PACKAGE
-	-	70
-	-	69
-	-	68
-	-	67
-	-	66
-	-	65
-	-	64
-	-	63
-	-	62
-	-	61
-	-	60
-	-	59
-	-	58
-	-	57
-	-	56
-	-	55
- 4	4 4 4 4 4 4 4	18024-8 SCR, BTN SKT HD CAP (M4 X 12.0)
- 2	2 2 2 2 2 2 2	1-18023-3 SCR, SKT HD CAP (M4 X 16.0)
-	-	52
-	-	51
-	-	50
-	-	49
-	-	48
-	-	47
-	-	46
-	-	45
-	-	44
-	-	43
-	-	42
-	-	41
-	-	40
-	-	39
-	-	38
-	-	37
-	-	36
-	-	35
-	-	34
- 2	2 2 2 2 2 2 2	1-18024-0 SCR, BTN SKT HD CAP (M4 X 20.0)
-	-	32
-	-	31
-	-	30
-	-	29
-	-	28
- 2	2 2 2 2 2 2 2	1-22284-0 SPRING, COMPRESSION
-	-	27
-	-	26
-	-	25
-	-	24
-	-	23
-	-	22
-	-	21
- 4	4 4 4 4 4 4 4	18025-2 WASHER, SPRG LOCK, REG M4
-	-	20
-	-	19
-	-	18
-	-	17
-	-	16
-	-	15
-	-	14
-	-	13
-	-	12
-	-	11
-	-	10
-	-	9
1	2 2 2 2 1 1 1	7-1333225-7 ANVIL, COMBINATION
-	-	8
-	-	7
-	-	6
-	-	5
-	-	4
1	2 2 2 1 1 1 1	8-854830-3 CRIMPER, INSULATION SPECIAL
-	-	3
-	-	2
1	2 2 2 1 1 1 1	1-456405-6 CRIMPER, WIRE PREMIUM
-	-	1

DATE	BY	APPV	DESCRIPTION
16-Jun-09	EL LOFTHOUSE		REVISION
16-Jun-09	M CLIFFORD		REVISION

ITEM NO	DESCRIPTION	ITEM NO
84		
83		
82		
81		
80		
79		
78		
77		
76		
75		
74		
-77	-76	-72
-71	-6	-2
-1	-	-
PART NO	DESCRIPTION	ITEM NO

DATE	BY	APPV	DESCRIPTION
16-Jun-09	EL LOFTHOUSE		REVISION
16-Jun-09	M CLIFFORD		REVISION

REV	DATE	BY	APPV	DESCRIPTION
A	00779			FINE ADJUST SIDE FEED HDI APPLICATOR