

| PART NUMBER | REVISION | DESCRIPTION                      | FEED TYPE  |
|-------------|----------|----------------------------------|------------|
| 2150322-1   | E        | FINE CRIMP HEIGHT ADJUST         | MECHANICAL |
| 2150322-2   | E        | FINE CRIMP HEIGHT ADJUST         | PNEUMATIC  |
| 7-2150322-1 | E        | MECHANICAL AND CRIMP TOOLING KIT | MECHANICAL |
| 7-2150322-2 | E        | PNEUMATIC AND CRIMP TOOLING KIT  | PNEUMATIC  |
| 7-2150322-7 | A        | CRIMP TOOLING KIT                | -          |

ATLANTIC VERSION TERMINATOR INTERFACE ADAPTER



| APPLICATOR DATA                |                |      |
|--------------------------------|----------------|------|
| CRIMP                          | SIZE           | TYPE |
| WIRE                           | 4.50 mm [.177] | F    |
| INSUL                          | 5.30 mm [.209] | F    |
| APPL INSTRUCTIONS<br>408-35043 |                |      |

| TERMINAL DATA: TE TERMINAL TE CRIMP SPECIFICATION |                              |             |             |
|---|------------------------------|-------------|-------------|
| TERMINAL NAME: FASTON CONNECTOR, .250 SERIES      |                              |             |             |
| WIRE STRIP LENGTH                                 | INSULATION DIAMETER RANGE    |             |             |
| 5.84-6.60 mm [.230-.260 IN]                       | ∅3.80-5.10 mm [.150-.201 IN] |             |             |
| TERMINAL APPLICATION SPECIFICATION                | 114-20023                    |             |             |
|   |                              |             |             |
| TERMINALS APPLIED                                 |                              |             |             |
| TE TERMINAL                                       | TE TERMINAL                  | TE TERMINAL | TE TERMINAL |
| 1-160301-6  | 1-160301-8                   | 1-160301-9  | 2-160301-8  |
| 2-160301-9  |                              |             |             |

| WIRE SIZE | CRIMP HEIGHT mm [INCH]     | CRIMP HEIGHT REFERENCE SETTING |
|-----------|----------------------------|--------------------------------|
| 6.00mm2   | 2.34+/-0.03 [.092+/-0.001] | 5.2                            |

- 1. RECOMMENDED SPARE PARTS
- 2. REFER TO SUPPLIED INSTRUCTION SHEET FOR CLEANING, LUBRICATION AND STORAGE OF APPLICATOR.
- 3. APPLY PART NUMBER 2-23419-6 LOCTITE TO THREADS OF ITEM 242.
- 4. CRIMP HEIGHT REFERENCE SETTING WAS THE SETTING USED WHEN THE APPLICATOR WAS QUALIFIED AT THE FACTORY. ADJUSTMENT MAY BE NECESSARY WHEN RUNNING APPLICATOR IN THE FIELD.
- 5. UNLESS SPECIFIED OTHERWISE TORQUE VALUES SHALL BE USED PER DOCUMENT, 101-35000.
- 6. TERMINAL LUBRICANT IS RECOMMENDED.

**\*WARNING**  
ON INSTALLATION, SET WIRE DISC TO CRIMP HEIGHT REFERENCE SETTING FOR LARGEST WIRE SIZE. CRIMP HEIGHT REFERENCE SETTINGS GREATER THAN THE VALUE SHOWN MAY CAUSE DAMAGE TO THE CRIMP TOOLING. REFER TO THE INSTRUCTION SHEET FOR PROPER SETUP AND ADJUSTMENTS.

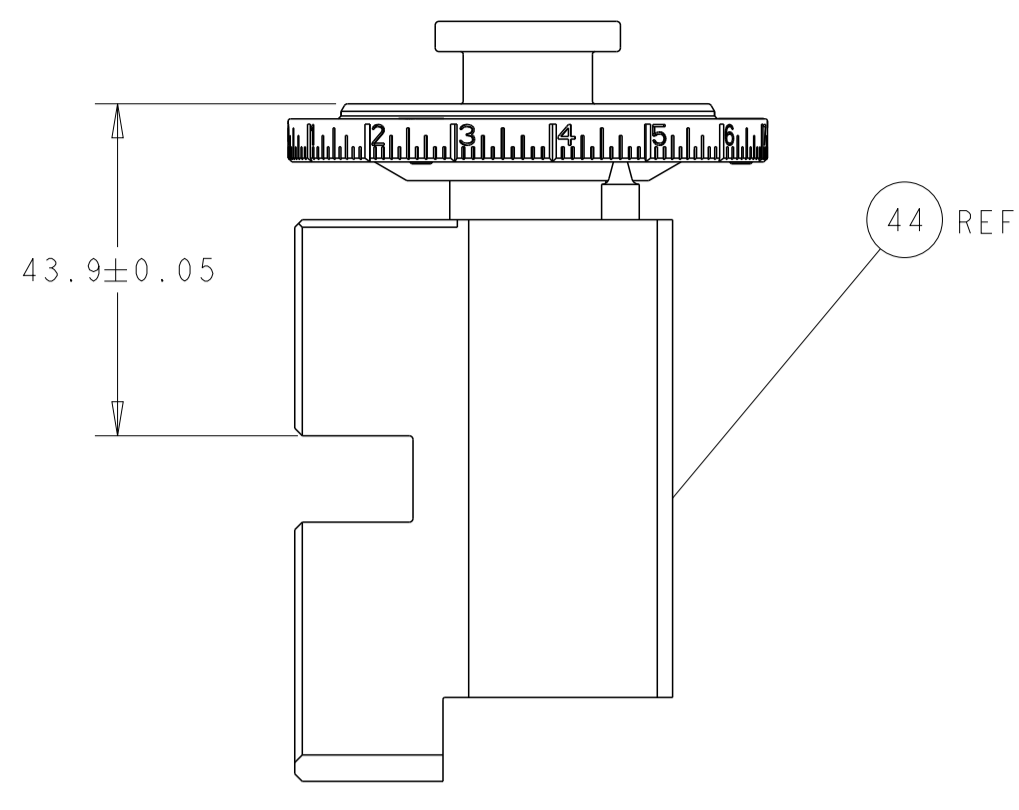
| LOC | DIST | REVISIONS |     |               |           |     |      |
|-----|------|-----------|-----|---------------|-----------|-----|------|
| A   | 66   | P         | LTN | DESCRIPTION   | DATE      | DWN | APVD |
|     |      | B         |     | ECR-19-007969 | 19MAY2019 | TB  | TE   |
|     |      | C         |     | ECR-19-012905 | 15AUG2019 | JAH | RK   |
|     |      | D         |     | ECR-22-154481 | 030C12022 | ROY | JAH  |
|     |      | E         |     | ECR-22-156806 | 270C12022 | LG  | TE   |

|   |     |     |     |     |             |                                     |         |
|---|-----|-----|-----|-----|-------------|-------------------------------------|---------|
| - | 1   | -   | 1   | -   | 2119641-1   | FEED CAM, AIR FEED                  | 248     |
| - | 1   | 1   | 1   | 1   | 2119082-9   | CAM, SNAIL, INSULATION ADJUSTMENT   | 244     |
| - | 1   | 1   | 1   | 1   | 2079764-1   | WASHER, WAVE SPRING, CREST-TO-CREST | 243     |
| - | 1   | 1   | 1   | 1   | 2119083-1   | RETAINER, INSULATION DIAL           | 242     |
| - | -   | 1   | -   | 1   | 2119580-1   | MECHANICAL FEED ASSEMBLY            | 239     |
| - | 1   | -   | 1   | -   | 2844940-3   | AIR FEED MODULE                     | 238     |
| - | 1   | 1   | 1   | 1   | 1-18028-0   | WASHER, FLAT, REG M8                | 192     |
| - | REF | REF | REF | REF | 994970-2    | COUNTER, MAGNETIC                   | 164     |
| - | 1   | 1   | 1   | 1   | 2119955-2   | ASSY, LUBRICATOR, END FEED          | 84      |
| - | 1   | 1   | 1   | 1   | 455888-4    | SPACER, CRIMPER                     | 82      |
| - | 1   | 1   | 1   | 1   | 2119791-5   | DEPRESSOR, WIRE                     | 73      |
| - | 1   | 1   | 1   | 1   | 1803607-4   | DOCUMENTATION PACKAGE               | 71      |
| - | 2   | 2   | 2   | 2   | 2-18032-2   | SCR, SET, FLT PNT, M3 X 10.0        | 70      |
| - | 1   | 1   | 1   | 1   | 2119740-1   | TAG, IDENTIFICATION                 | 67      |
| - | 2   | 2   | 2   | 2   | 2168078-1   | SCREW, DRIVE, RH, RoHS, 2 x .188    | 66      |
| - | 2   | 2   | 2   | 2   | 2168400-5   | SHCS, LOW HEAD, RoHS, M4 X 20       | 64      |
| - | 1   | 1   | 1   | 1   | 2168083-2   | SCR, SKT HD CAP, RoHS, M4 X 8.0     | 60      |
| - | 1   | 1   | 1   | 1   | 5-18022-5   | SCR, HEX HD CAP, M4 X 6.0           | 59      |
| - | -   | 1   | -   | 1   | 2063961-1   | FEED FINGER                         | 58      |
| - | 3   | 3   | 3   | 3   | 2168400-4   | SHCS, LOW HEAD, RoHS, M4 X 8        | 57      |
| - | 2   | 2   | 2   | 2   | 1-2168083-0 | SCR, SKT HD CAP, RoHS, M4 X 10      | 56      |
| - | 2   | 2   | 2   | 2   | 5018030-1   | NUT, HEX, REG, RoHS, M3             | 54      |
| - | 2   | 2   | 2   | 2   | 986965-8    | NUT, LOCK, HEX, TORQUE (M4)         | 53      |
| - | 1   | -   | 1   | -   | 2063961-1   | FEED FINGER                         | 51      |
| - | 1   | 2   | 1   | 2   | 18023-9     | SCR, SKT HD CAP M4 X 6.0            | 49      |
| - | -   | 1   | -   | 1   | 2119652-1   | FEED CAM, PRE FEED                  | 48      |
| - | -   | 1   | -   | 1   | 2119653-1   | FEED CAM, POST FEED                 | 47      |
| - | 1   | 1   | 1   | 1   | 2119655-5   | APPLICATOR BASIC ASSEMBLY, EF       | 46      |
| - | 1   | 1   | 1   | 1   | 1803517-1   | RAM ASSEMBLY, EF ATLANTIC           | 44      |
| - | 1   | 1   | 1   | 1   | 1803602-1   | SCR, BHSC, RoHS (M8 X 25)           | 41      |
| - | 7   | 7   | 7   | 7   | 1-18028-2   | WASHER, FLAT, REG M4                | 33      |
| - | 2   | 2   | 2   | 2   | 2168083-9   | SCR, SKT HD CAP, RoHS, M4 X 20      | 31      |
| - | 2   | 2   | 2   | 2   | 2168083-2   | SCR, SKT HD CAP, RoHS, M4 X 8.0     | 29      |
| - | 1   | 1   | 1   | 1   | 240639-1    | STRIPPER (MACHINING)                | 27      |
| - | 2   | 2   | 2   | 2   | 1-2168083-5 | SCR, SKT HD CAP, RoHS, M4 X 30      | 25      |
| - | 1   | 1   | 1   | 1   | 1-1752371-6 | PLATE, STRIP GUIDE                  | 24      |
| - | 1   | 1   | 1   | 1   | 240825-2    | PLATE, STRIP HOLD DOWN              | 23      |
| - | 2   | 2   | 2   | 2   | 2-22281-3   | SPRING, COMPRESSION                 | 22      |
| - | 1   | 1   | 1   | 1   | 1803292-4   | DRAG                                | 20      |
| - | 2   | 2   | 2   | 2   | 1901259-7   | GUIDE, LOWER STRIP                  | 18      |
| - | 4   | 4   | 4   | 4   | 1-2079383-1 | SCR, BHSC, RoHS (M6 X 12)           | 17      |
| - | 1   | 1   | 1   | 1   | 240644-5    | PLATE, REAR SHEAR                   | 11      |
| - | -   | -   | -   | -   | -           | -                                   | 10      |
| - | 1   | 1   | 1   | 1   | 4-690495-3  | PLATE, FRONT SHEAR                  | 9       |
| - | 1   | 2   | 2   | 1   | 1803074-4   | ANVIL, COMBINATION, END FEED        | 8       |
| - | 1   | 1   | 1   | 1   | 2217206-5   | BLADE, SLUG                         | 7       |
| - | -   | -   | -   | -   | -           | -                                   | 6       |
| - | 1   | 1   | 1   | 1   | 2-240641-9  | SPACER                              | 5       |
| - | 1   | 1   | 1   | 1   | 4-238011-2  | BLOCK, CRIMPER SPACER               | 4       |
| - | 1   | 2   | 2   | 1   | 4-1633962-3 | CRIMPER, INSULATION F PREMIUM       | 3       |
| - | 1   | 1   | 1   | 1   | 455888-4    | SPACER, CRIMPER                     | 2       |
| - | 1   | 2   | 2   | 1   | 8-1633609-4 | CRIMPER, WIRE                       | 1       |
| - | 77  | 72  | 71  | 2   | -1          | PART NO                             | ITEM NO |

ATLANTIC VERSION  
Shown on sheets 1 of 4 & 2 of 4  
(Pacific version shown on sheets 3 of 4 & 4 of 4)

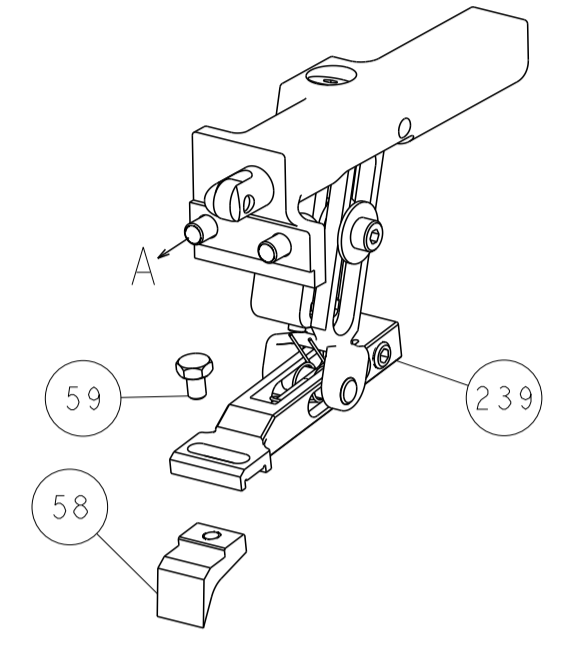
| DIMENSIONS:  |         | TOLERANCES UNLESS OTHERWISE SPECIFIED: |         | MATERIAL:                              |         | FINISH:  |          |
|--|---------|--|---------|--|---------|----------|----------|
| mm   | 0 PLC ± | 1 PLC ±                                | 2 PLC ± | 3 PLC ±                                | 4 PLC ± | ANGLES ± | FINISH ± |
| DWN L. GROSS 08OCT2013<br>CHK G. BAILEY 08OCT2013<br>APVD M. CLIFFORD 08OCT2013<br>NAME Ocean End Feed Applicator<br>SIZE CAGE CODE DRAWING NO RESTRICTED TO<br>A1 00779 C=2150322<br>SCALE 1:1 SHEET 1 OF 4 REV E |         |  |         | CUSTOMER ACCESSIBLE PRODUCTION DRAWING |         |          |          |

| LOC | DIST | REV | DESCRIPTION | DATE | OWN | APVD |
|-----|------|-----|-------------|------|-----|------|
| A   | 66   |     | SEE SHEET 1 |      |     |      |

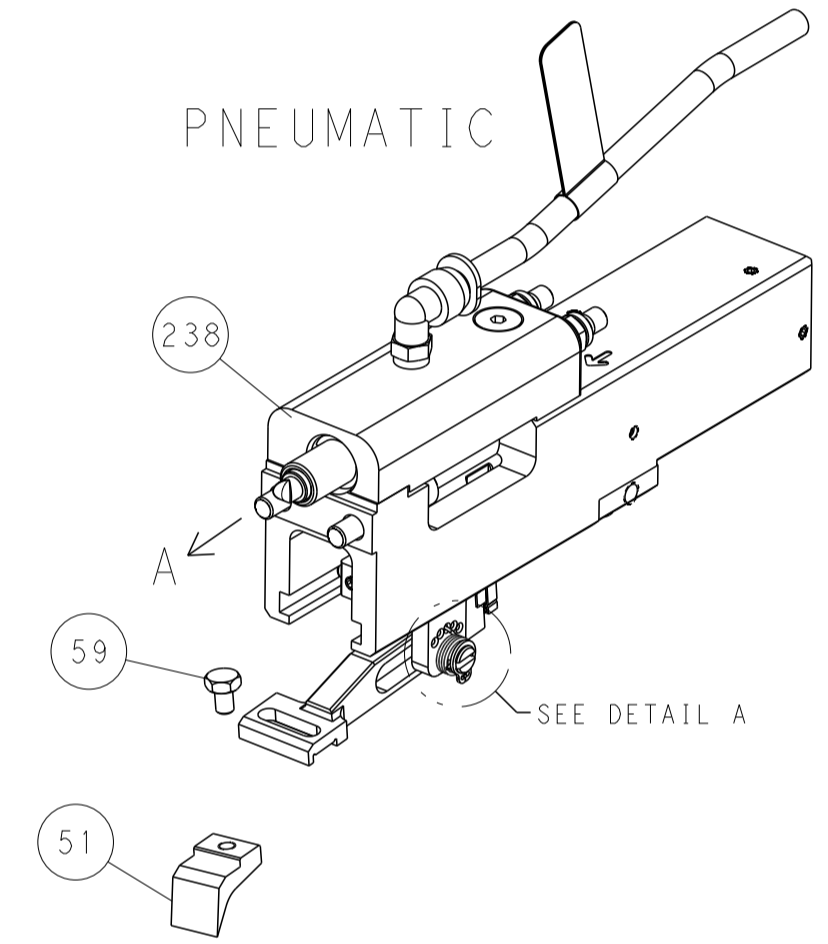


RAM SET-UP

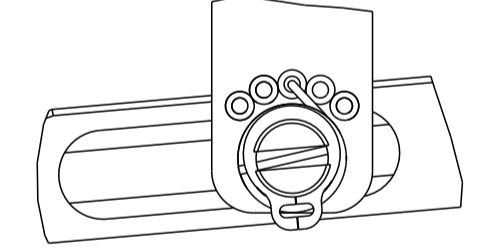
FEED TYPE  
MECHANICAL



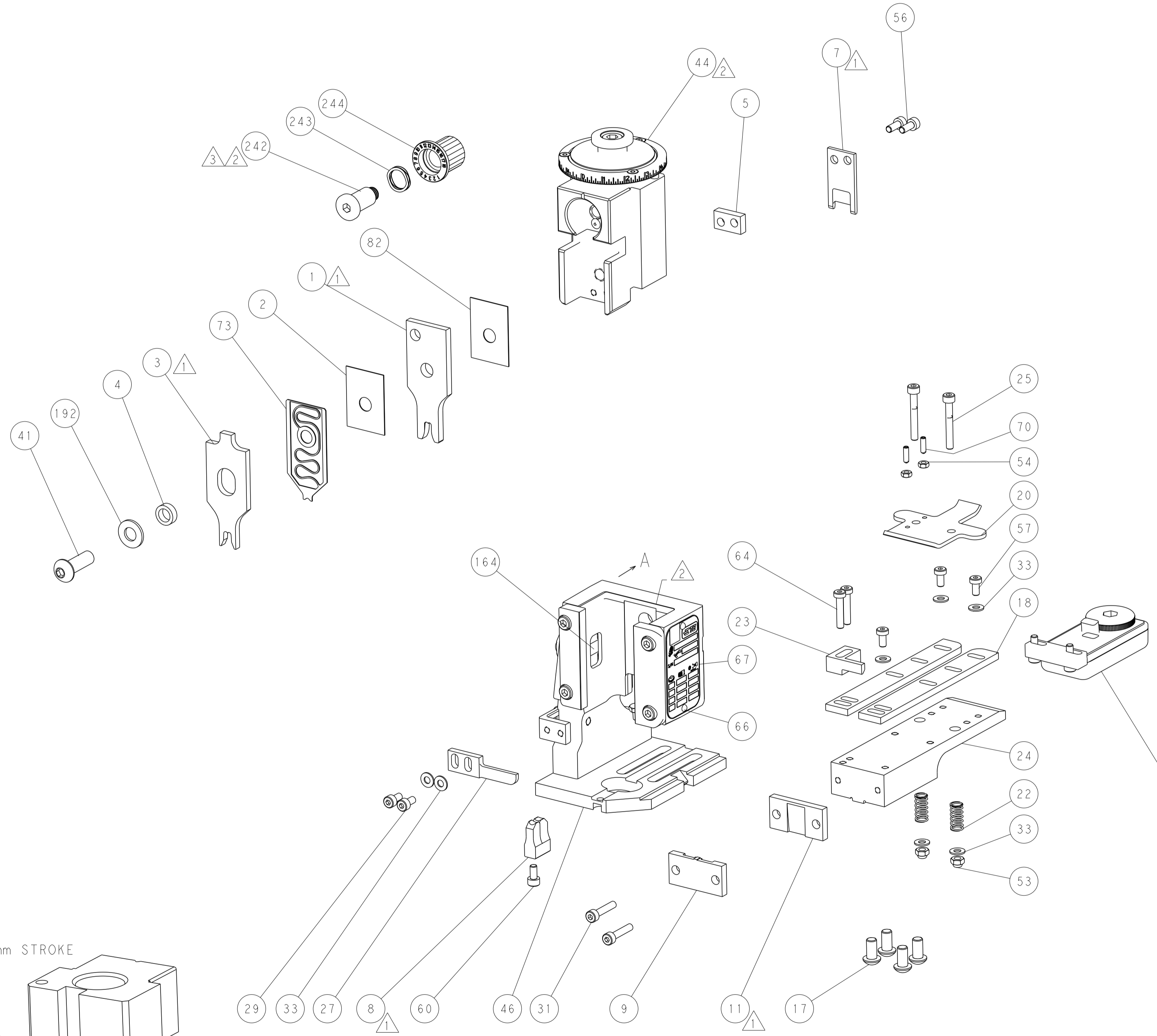
PNEUMATIC



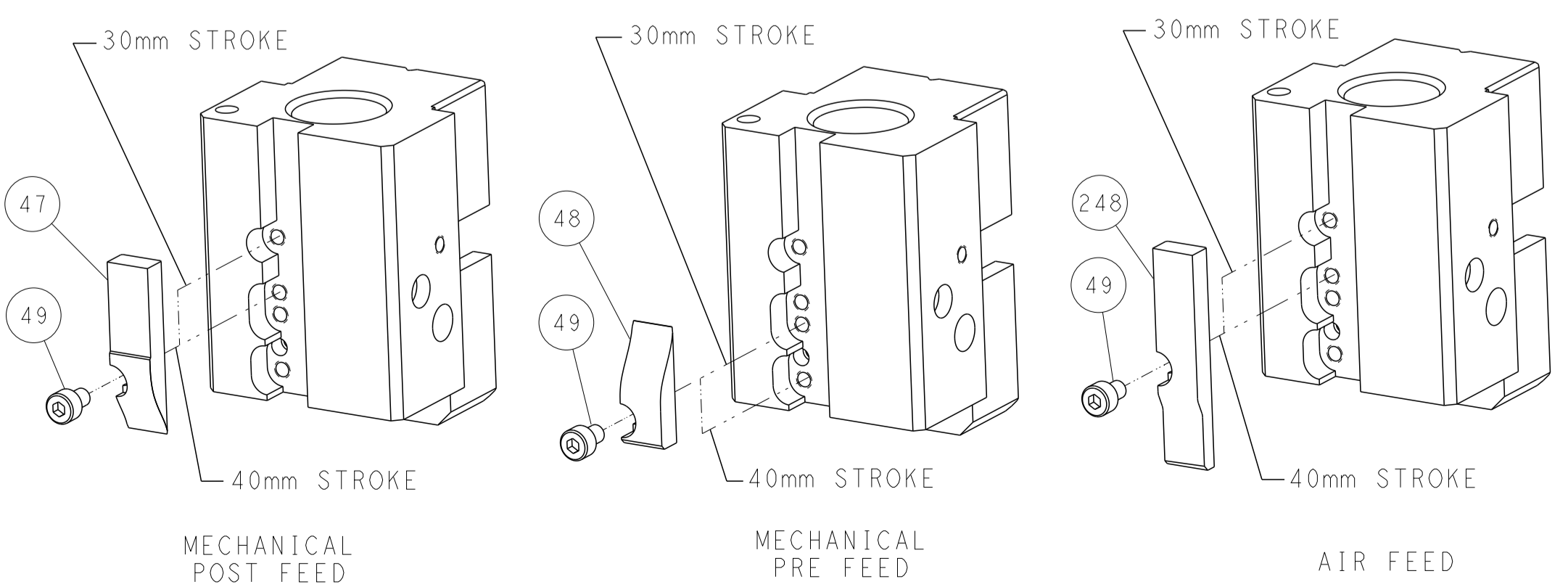
FEED SPRING  
SETTING POSITION



DETAIL A



CAM POSITIONS

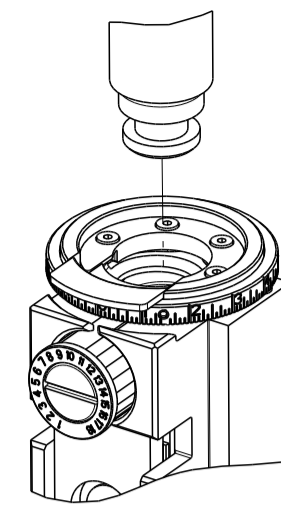


ATLANTIC VERSION  
 Shown on sheets 1 of 4 & 2 of 4  
 (Pacific version shown on sheets 3 of 4 & 4 of 4)

|  |  |   |  |
|--|--|---|--|
| <small>THIS DRAWING IS UNPUBLISHED. RELEASED FOR PUBLICATION BY TYCO ELECTRONICS CORPORATION. ALL RIGHTS RESERVED.</small> |  | DWN L.GROSS 08OCT2013<br>CHK G.BAILEY 08OCT2013<br>APVD M.CLIFFORD 08OCT2013  | TE Connectivity<br>Harrisburg, PA 17105-3608   |
| DIMENSIONS: mm<br>   |  | TOLERANCES UNLESS OTHERWISE SPECIFIED:<br>0 PLC ±<br>1 PLC ±<br>2 PLC ±<br>3 PLC ±<br>4 PLC ±<br>ANGLES ±<br>FINISH | NAME Ocean End Feed Applicator<br>SIZE CAGE CODE DRAWING NO. RESTRICTED TO<br>A1 00779 ©=2150322 |
| MATERIAL:  |  | WEIGHT:   | SCALE 1:1 SHEET 2 OF 4 REV E<br>Customer Accessible Production Drawing                           |

| PART NUMBER | REVISION | DESCRIPTION              | FEED TYPE  |
|-------------|----------|--------------------------|------------|
| 2-2150322-1 | E        | FINE CRIMP HEIGHT ADJUST | MECHANICAL |
| 2-2150322-2 | E        | FINE CRIMP HEIGHT ADJUST | PNEUMATIC  |
| 7-2150322-7 | A        | CRIMP TOOLING KIT        | -          |

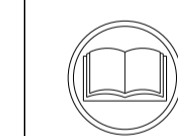
PACIFIC VERSION TERMINATOR  
INTERFACE ADAPTER



| APPLICATOR DATA                |                  |      |
|--------------------------------|------------------|------|
| CRIMP                          | SIZE             | TYPE |
| WIRE                           | 4.50 mm [ .177 ] | F    |
| INSUL                          | 5.30 mm [ .209 ] | F    |
| APPL INSTRUCTIONS<br>408-35043 |                  |      |

| TERMINAL DATA: TE TERMINAL                         |             | TE CRIMP SPECIFICATION                                       |             |
|--|-------------|--|-------------|
| TERMINAL NAME: FASTON CONNECTOR, .250 SERIES       |             |  |             |
| WIRE STRIP LENGTH<br>5.84-6.60 mm [ .230-.260 IN ] |             | INSULATION DIAMETER RANGE<br>Ø3.80-5.10 mm [ 1.150-.201 IN ] |             |
| TERMINAL APPLICATION SPECIFICATION                 | 114-20023   | -  | -           |
| TERMINALS APPLIED                                  |             |  |             |
| TE TERMINAL  | TE TERMINAL | TE TERMINAL  | TE TERMINAL |
| 1-160301-6   | 1-160301-8  | 1-160301-9   | 2-160301-8  |
| 2-160301-9   |             |  |             |

| WIRE SIZE | CRIMP HEIGHT mm [INCH]          | CRIMP HEIGHT REFERENCE SETTING |
|-----------|---------------------------------|--------------------------------|
| 6.00mm2   | 2.34 +/- 0.03 [ .092 +/- .001 ] | 5.2                            |



- RECOMMENDED SPARE PARTS
- REFER TO SUPPLIED INSTRUCTION SHEET FOR CLEANING, LUBRICATION AND STORAGE OF APPLICATOR.
- APPLY PART NUMBER 2-23419-6 LOCTITE TO THREADS OF ITEM 242.
- CRIMP HEIGHT REFERENCE SETTING WAS THE SETTING USED WHEN THE APPLICATOR WAS QUALIFIED AT THE FACTORY. ADJUSTMENT MAY BE NECESSARY WHEN RUNNING APPLICATOR IN THE FIELD.
- UNLESS SPECIFIED OTHERWISE TORQUE VALUES SHALL BE USED PER DOCUMENT, 101-35000.
- TERMINAL LUBRICANT IS RECOMMENDED.

**\*WARNING**  
ON INSTALLATION, SET WIRE DISC TO CRIMP HEIGHT REFERENCE SETTING FOR LARGEST WIRE SIZE. CRIMP HEIGHT REFERENCE SETTINGS GREATER THAN THE VALUE SHOWN MAY CAUSE DAMAGE TO THE CRIMP TOOLING. REFER TO THE INSTRUCTION SHEET FOR PROPER SETUP AND ADJUSTMENTS.

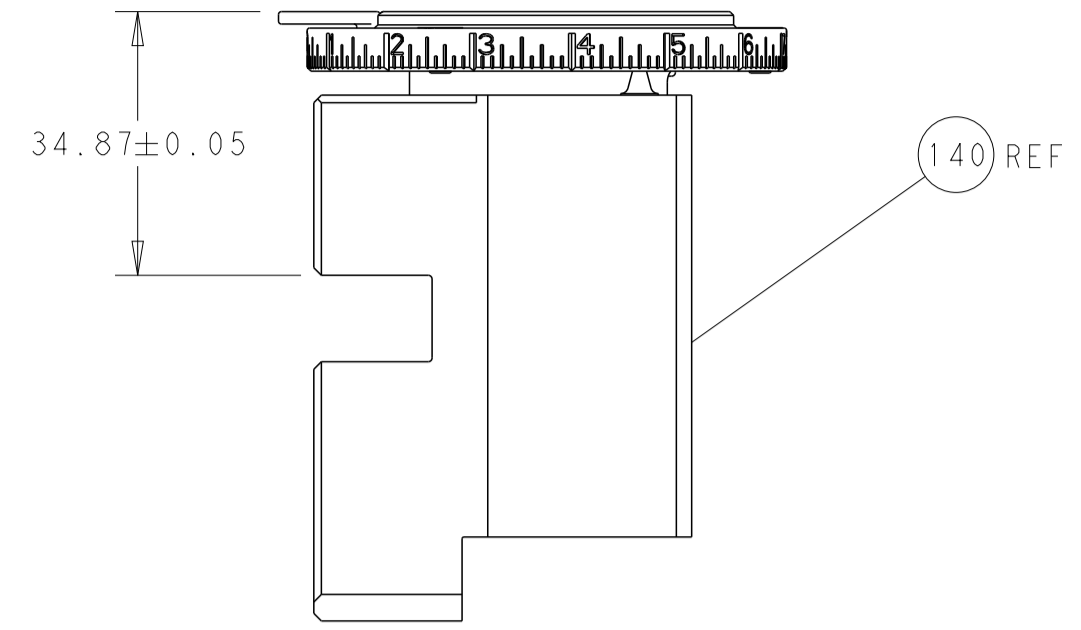
| LOC | DIST | REVISIONS |     |             |      |     |      |
|-----|------|-----------|-----|-------------|------|-----|------|
| A   | 66   | P         | LTN | DESCRIPTION | DATE | DWN | APVD |
| -   | -    | -         | -   | SEE SHEET 1 | -    | -   | -    |

|   |     |     |             |                                     |             |         |
|---|-----|-----|-------------|-------------------------------------|-------------|---------|
| - | 1   | 1   | 2119082-9   | CAM, SNAIL, INSULATION ADJUSTMENT   | 244         |         |
| - | 1   | 1   | 2079764-1   | WASHER, WAVE SPRING, CREST-TO-CREST | 243         |         |
| - | 1   | 1   | 2119083-1   | RETAINER, INSULATION DIAL           | 242         |         |
| - | -   | 1   | 2119580-1   | MECHANICAL FEED ASSEMBLY            | 239         |         |
| - | 1   | -   | 2844940-3   | AIR FEED MODULE                     | 238         |         |
| - | 1   | 1   | 1-18028-0   | WASHER, FLAT, REG M8                | 192         |         |
| - | 4   | 4   | 2079383-9   | SCR, BHSC, RoHS (M6 X 20)           | 186         |         |
| - | REF | REF | 994970-2    | COUNTER, MAGNETIC                   | 164         |         |
| - | 1   | -   | 2119641-2   | FEED CAM, AIR FEED                  | 152         |         |
| - | 1   | 1   | 2168083-8   | SCR, SKT HD CAP, RoHS, M4 X 16      | 144         |         |
| - | -   | 1   | 2119653-2   | FEED CAM, POST FEED                 | 142         |         |
| - | 1   | 1   | 2119655-6   | APPLICATOR BASIC ASSEMBLY, EF       | 141         |         |
| - | 1   | 1   | 1803518-1   | RAM ASSEMBLY, EF PACIFIC            | 140         |         |
| - | 1   | 1   | 2119955-2   | ASSY, LUBRICATOR, END FEED          | 84          |         |
| - | 1   | 1   | 455888-4    | SPACER, CRIMPER                     | 82          |         |
| - | 1   | 1   | 2119791-5   | DEPRESSOR, WIRE                     | 73          |         |
| - | 1   | 1   | 1803607-4   | DOCUMENTATION PACKAGE               | 71          |         |
| - | 2   | 2   | 2-18032-2   | SCR, SET, FLT PNT, M3 X 10.0        | 70          |         |
| - | 1   | 1   | 2119740-1   | TAG, IDENTIFICATION                 | 67          |         |
| - | 2   | 2   | 2168078-1   | SCREW, DRIVE, RH, RoHS, 2 x .188    | 66          |         |
| - | 2   | 2   | 2168400-5   | SHCS, LOW HEAD, RoHS, M4 X 20       | 64          |         |
| - | 1   | 1   | 5-18022-5   | SCR, HEX HD CAP, M4 X 6.0           | 59          |         |
| - | -   | 1   | 2063961-1   | FEED FINGER                         | 58          |         |
| - | 3   | 3   | 2168400-4   | SHCS, LOW HEAD, RoHS, M4 X 8        | 57          |         |
| - | 2   | 2   | 1-2168083-0 | SCR, SKT HD CAP, RoHS, M4 X 10      | 56          |         |
| - | 2   | 2   | 5018030-1   | NUT, HEX, REG, RoHS, M3             | 54          |         |
| - | 2   | 2   | 986965-8    | NUT, LOCK, HEX, TORQUE (M4)         | 53          |         |
| - | 1   | -   | 2063961-1   | FEED FINGER                         | 51          |         |
| - | 1   | 2   | 18023-9     | SCR, SKT HD CAP M4 X 6.0            | 49          |         |
| - | -   | 1   | 2119652-1   | FEED CAM, PRE FEED                  | 48          |         |
| - | 1   | 1   | 1803602-1   | SCR, BHSC, RoHS (M8 X 25)           | 41          |         |
| - | 7   | 7   | 1-18028-2   | WASHER, FLAT, REG M4                | 33          |         |
| - | 2   | 2   | 2168083-9   | SCR, SKT HD CAP, RoHS, M4 X 20      | 31          |         |
| - | 2   | 2   | 2168083-2   | SCR, SKT HD CAP, RoHS, M4 X 8.0     | 29          |         |
| - | 1   | 1   | 240639-1    | STRIPPER (MACHINING)                | 27          |         |
| - | 2   | 2   | 1-2168083-5 | SCR, SKT HD CAP, RoHS, M4 X 30      | 25          |         |
| - | 1   | 1   | 1-1752371-6 | PLATE, STRIP GUIDE                  | 24          |         |
| - | 1   | 1   | 240825-2    | PLATE, STRIP HOLD DOWN              | 23          |         |
| - | 2   | 2   | 2-22281-3   | SPRING, COMPRESSION                 | 22          |         |
| - | 1   | 1   | 1803292-4   | DRAG                                | 20          |         |
| - | 2   | 2   | 1901259-7   | GUIDE, LOWER STRIP                  | 18          |         |
| - | 1   | 1   | 240644-5    | PLATE, REAR SHEAR                   | 11          |         |
| - | -   | -   | -           | -                                   | 10          |         |
| - | 1   | 1   | 4-690495-3  | PLATE, FRONT SHEAR                  | 9           |         |
| - | 1   | 1   | 1803074-4   | ANVIL, COMBINATION, END FEED        | 8           |         |
| - | 1   | 1   | 2217206-5   | BLADE, SLUG                         | 7           |         |
| - | -   | -   | -           | -                                   | 6           |         |
| - | 1   | 1   | 2-240641-9  | SPACER                              | 5           |         |
| - | 1   | 1   | 4-238011-2  | BLOCK, CRIMPER SPACER               | 4           |         |
| - | 1   | 1   | 4-1633962-3 | CRIMPER, INSULATION F PREMIUM       | 3           |         |
| - | 1   | 1   | 455888-4    | SPACER, CRIMPER                     | 2           |         |
| - | 1   | 1   | 8-1633609-4 | CRIMPER, WIRE                       | 1           |         |
| - | 77  | 22  | 21          | PART NO                             | DESCRIPTION | ITEM NO |

PACIFIC VERSION  
Shown on sheets 3 of 4 & 4 of 4  
(Atlantic version shown on sheets 1 of 4 & 2 of 4)

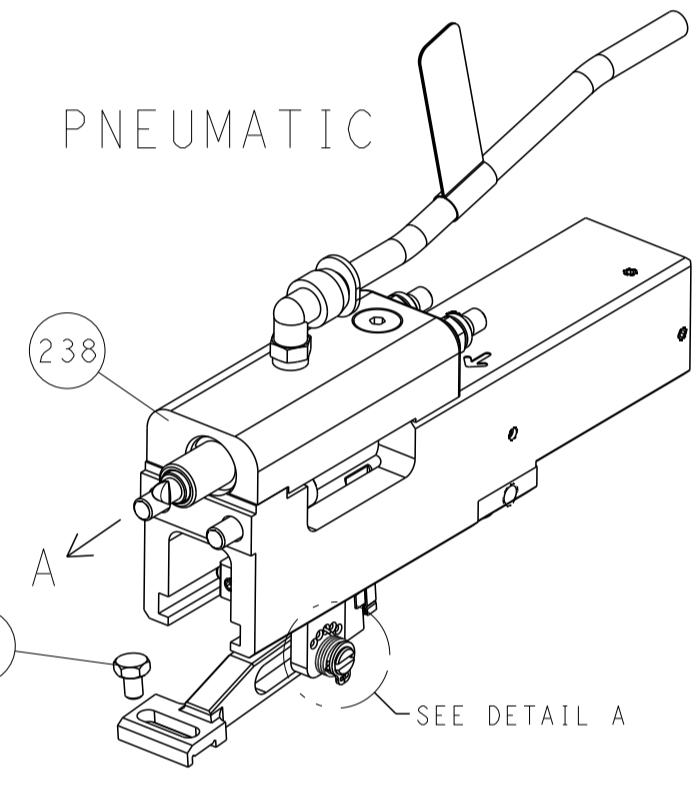
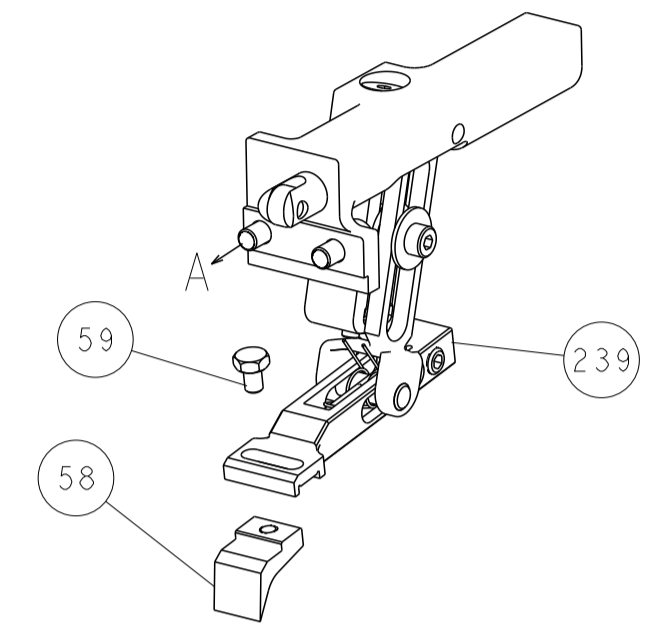
|                |  |  |  |                |  |                 |  |                   |  |                 |  |
|----------------|--|--|--|----------------|--|-----------------|--|-------------------|--|-----------------|--|
| DIMENSIONS: mm |  | TOLERANCES UNLESS OTHERWISE SPECIFIED: |  | DWN: G. BAILEY |  | DATE: 08OCT2013 |  | NAME: M. CLIFFORD |  | DATE: 08OCT2013 |  |
| 0 PLC ±        |  | 1 PLC ±                                |  | 2 PLC ±        |  | 3 PLC ±         |  | 4 PLC ±           |  | ANGLES ±        |  |
| FINISH         |  | FINISH                                 |  | WEIGHT         |  | SCALE: 1:1      |  | SHEET 3 OF 4      |  | REV E           |  |
| MATERIAL       |  | FINISH                                 |  | WEIGHT         |  | SCALE: 1:1      |  | SHEET 3 OF 4      |  | REV E           |  |

| LOC | DIST | REVISIONS |     |             |      |     |      |
|-----|------|-----------|-----|-------------|------|-----|------|
| A   | 66   | P         | LTN | DESCRIPTION | DATE | OWN | APVD |
|     |      | -         |     | SEE SHEET 1 |      |     |      |



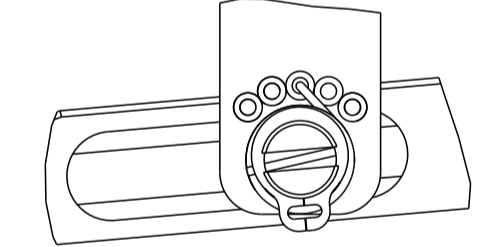
RAM SET-UP

FEED TYPE  
MECHANICAL

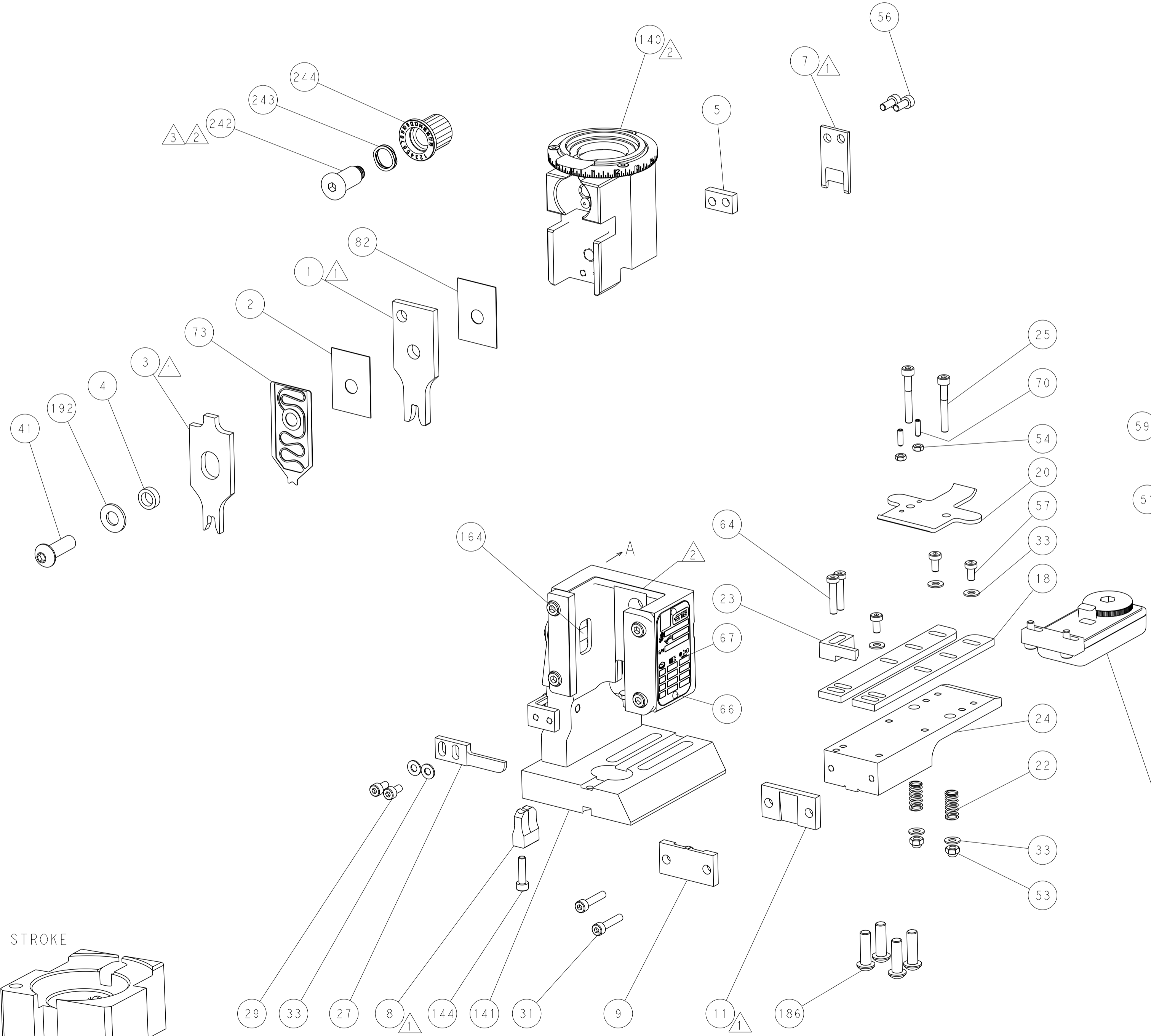


PNEUMATIC

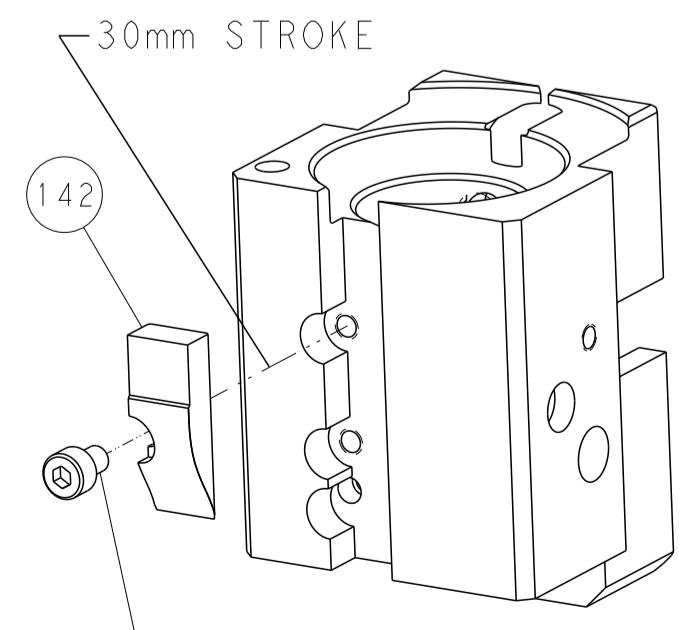
FEED SPRING  
SETTING POSITION



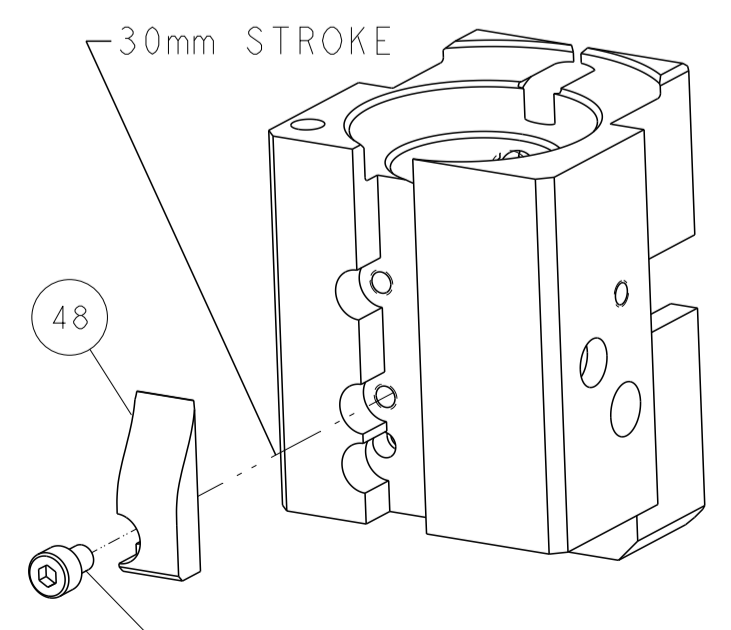
DETAIL A



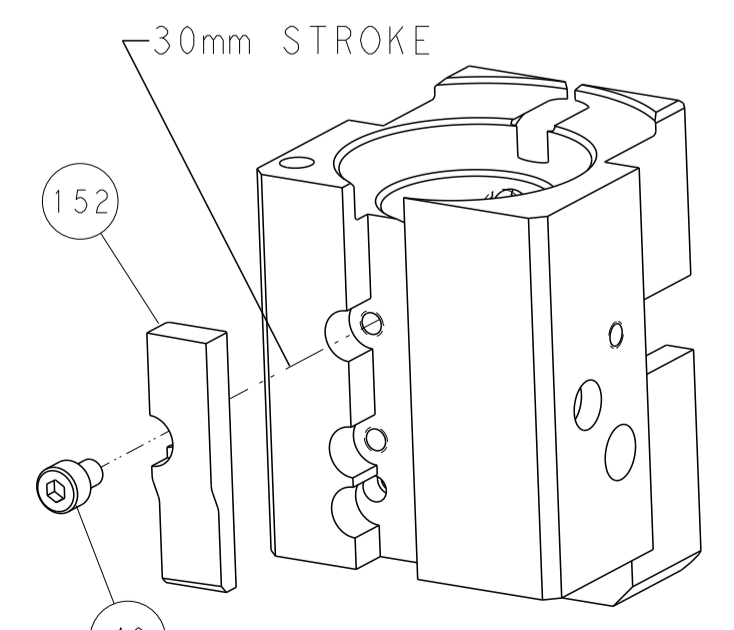
CAM POSITIONS



MECHANICAL  
POST FEED



MECHANICAL  
PRE FEED



AIR FEED

PACIFIC VERSION  
 Shown on sheets 3 of 4 & 4 of 4  
 (Atlantic version shown on sheets 1 of 4 & 2 of 4)

|  |  |  |                                      |
|--|--|--|--------------------------------------|
| <small>THIS DRAWING IS UNPUBLISHED. RELEASED FOR PUBLICATION BY TYCO ELECTRONICS CORPORATION. ALL RIGHTS RESERVED.</small> |  | DWN L.GROSS 08OCT2013<br>CHK G.BAILEY 08OCT2013<br>APVD M.CLEFFORD 08OCT2013 | NAME<br>Ocean End Feed<br>Applicator |
| DIMENSIONS:<br>mm<br>  | TOLERANCES UNLESS<br>OTHERWISE SPECIFIED:<br>0 PLC ±<br>1 PLC ±<br>2 PLC ±<br>3 PLC ±<br>4 PLC ±<br>ANGLES ±<br>FINISH | SIZE CAGE CODE DRAWING NO<br>A1 00779 C=2150322                              | RESTRICTED TO<br>-                   |
| MATERIAL:  |  | WEIGHT:  | SCALE 1:1 SHEET 4 OF 4 REV E         |