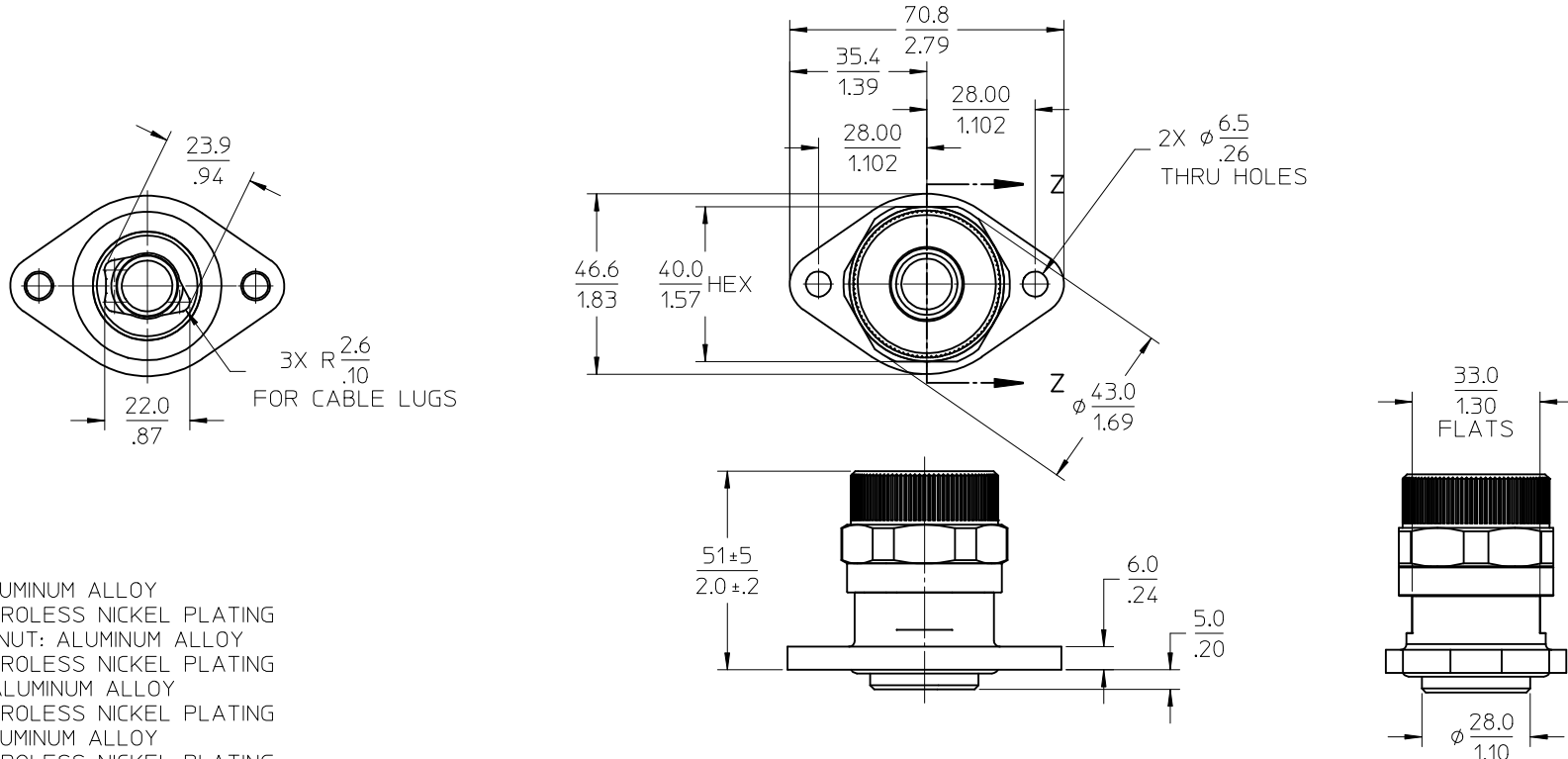


10	9	8	7	6	5	4	3	2
SINGLE ASSEMBLY PART NO.	KIT ASSEMBLY PART NO.	WIRE AWG	GROMMET	COLOR	O-RING	COLOR	CABLE SEALING RANGE	
1301990030	1301990130	1	HNBR	BLACK	HNBR	BLACK	11.10/.437 - 14.27/.562	
1301990020	1301990120	1/0	HNBR	BLACK	HNBR	BLACK	14.27/.562 - 15.88/.625	
1301990025	1301990125	2/0	HNBR	BLACK	HNBR	BLACK	15.88/.625 - 17.45/.687	
1301990230	1301990330	1	SILICONE	RUST RED	SILICONE	RUST RED	11.10/.437 - 14.27/.562	
1301990220	1301990320	1/0	SILICONE	RUST RED	SILICONE	RUST RED	14.27/.562 - 15.88/.625	
1301990225	1301990325	2/0	SILICONE	RUST RED	SILICONE	RUST RED	15.88/.625 - 17.45/.687	

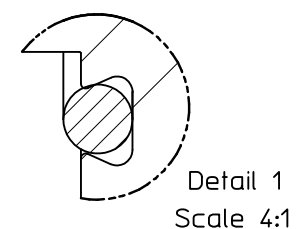
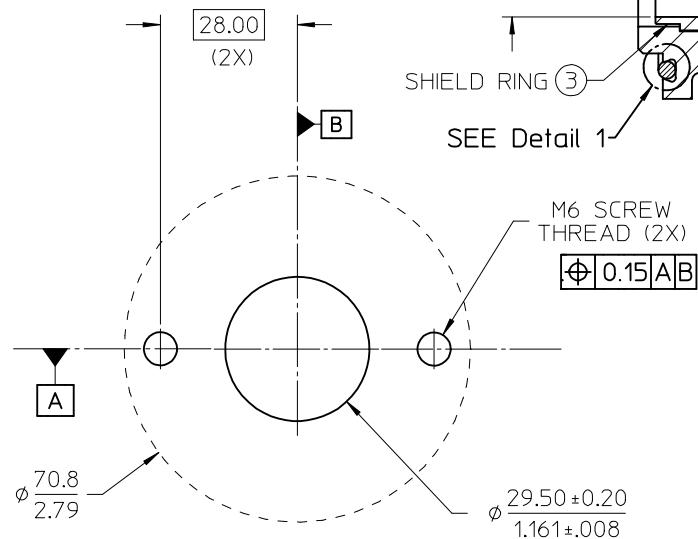
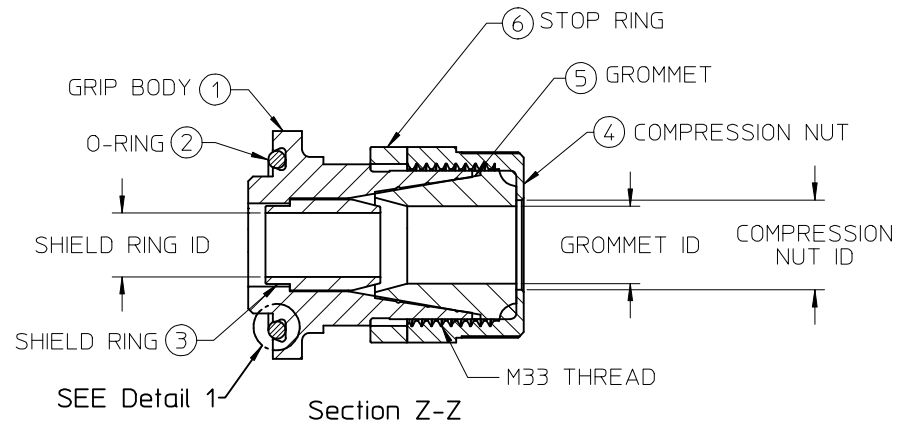


- NOTES:
- MATERIALS:
 - GRIP BODY: ALUMINUM ALLOY
 - FINISH: ELECTROLESS NICKEL PLATING
 - COMPRESSION NUT: ALUMINUM ALLOY
 - FINISH: ELECTROLESS NICKEL PLATING
 - SHIELD RING: ALUMINUM ALLOY
 - FINISH: ELECTROLESS NICKEL PLATING
 - STOP RING: ALUMINUM ALLOY
 - FINISH: ELECTROLESS NICKEL PLATING
 - GROMMET: SEE CHART
 - HNBR HARDNESS: SHORE 70A DUROMETER
 - SILICONE HARDNESS: SHORE 70A DUROMETER
 - O-RING: SEE CHART
 - HNBR HARDNESS: SHORE 90A DUROMETER
 - SILICONE HARDNESS: SHORE 70A DUROMETER
 - PRODUCT SPECIFICATION: PS-130199-001
 - PACKAGING SPECIFICATION: PK-130199-001
 - ASSEMBLY SPECIFICATION: AS-130199-001
 - ALL MATERIALS ARE ROHS COMPLIANT.

UPDATE TOLS AND NOTES EC NO: IPG2016-0883 DRW:WLEUNG 2015/10/27 CHKD:GSUDHINI 2015/10/27 APPR:APATEL 2016/03/10	QUALITY SYMBOLS ▽=0 ▽=0	GENERAL TOLERANCES (UNLESS SPECIFIED)	DIMENSION STYLE MM/IN	SCALE 1:1.25	DESIGN UNITS METRIC	THIRD ANGLE PROJECTION	
		4 PLACES ± --- ± --- 3 PLACES ± --- ± .015 2 PLACES ± 0.40 ± .03 1 PLACE ± 0.8 ± ---	DRAWN BY DATE WLEUNG 2011/11/18	CHECKED BY DATE DTITUS 2012/01/13	TITLE MAXLOC SHIELDED CORD GRIP ASSEMBLY 1AWG TO 2/0AWG		
		ANGULAR ± 3°	APPROVED BY DATE DTITUS 2012/01/13	MOLEX INCORPORATED			
		DRAFT WHERE APPLICABLE MUST REMAIN WITHIN DIMENSIONS	MATERIAL NO. SEE CHART	DOCUMENT NO. SD-130199-001	SHEET NO. 1 OF 2		

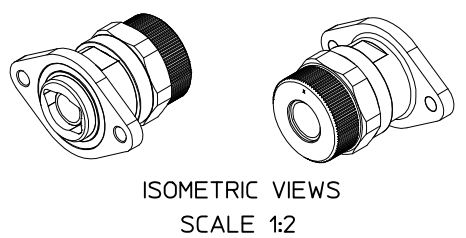
THIS DRAWING CONTAINS INFORMATION THAT IS PROPRIETARY TO MOLEX INCORPORATED AND SHOULD NOT BE USED WITHOUT WRITTEN PERMISSION

ITEM NO.	DESCRIPTION
1	GRIP BODY
2	O-RING, HNBR
	O-RING, SILICONE
3	SHIELD RING (1 AWG), 11.80/.465 ID
	SHIELD RING (1/0 AWG), 13.10/.516 ID
	SHIELD RING (2/0 AWG), 14.55/.573 ID
4	COMPRESSION NUT (1 AWG), 16.80/.662" ID
	COMPRESSION NUT (1/0 AWG), 18.40/.725" ID
	COMPRESSION NUT (2/0 AWG), 20.00/.787" ID
5	GROMMET, HNBR (1 AWG), 14.27/.562" ID
	GROMMET, HNBR (1/0 AWG), 15.88/.625" ID
	GROMMET, HNBR (2/0 AWG), 17.45/.687" ID
	GROMMET, SILICONE (1 AWG), 14.27/.562" ID
	GROMMET, SILICONE (1/0 AWG), 15.88/.625" ID
	GROMMET, SILICONE (2/0 AWG), 17.45/.687" ID
6	STOP RING, 7.5MM THICK



SEAL SURFACE ZONE WITHIN $\phi 70.8$ AREA:
 SURFACE FINISH REQUIRED $\nabla 3.2$
 FLATNESS REQUIRED $\square 0.2$

RECOMMENDED PANEL MOUNT OPENING



UPDATE ID DIMS & O-RING GROOVE EC NO: IP-GZ016-0883 DRAWN: WLEUNG 2015/10/27 CHKD: GSUBHINI 2015/10/27 APPR: APATEL 2016/03/10	QUALITY SYMBOLS $\nabla = 0$ $\square = 0$	GENERAL TOLERANCES (UNLESS SPECIFIED) <table border="1"> <thead> <tr> <th></th> <th>mm</th> <th>INCH</th> </tr> </thead> <tbody> <tr> <td>4 PLACES</td> <td>\pm ---</td> <td>\pm ---</td> </tr> <tr> <td>3 PLACES</td> <td>\pm ---</td> <td>$\pm .015$</td> </tr> <tr> <td>2 PLACES</td> <td>± 0.40</td> <td>$\pm .03$</td> </tr> <tr> <td>1 PLACE</td> <td>± 0.8</td> <td>\pm ---</td> </tr> </tbody> </table>		mm	INCH	4 PLACES	\pm ---	\pm ---	3 PLACES	\pm ---	$\pm .015$	2 PLACES	± 0.40	$\pm .03$	1 PLACE	± 0.8	\pm ---	DIMENSION STYLE MM/IN	SCALE 1:1	DESIGN UNITS METRIC	THIRD ANGLE PROJECTION
		mm	INCH																		
	4 PLACES	\pm ---	\pm ---																		
	3 PLACES	\pm ---	$\pm .015$																		
2 PLACES	± 0.40	$\pm .03$																			
1 PLACE	± 0.8	\pm ---																			
DRAWN BY WLEUNG 2011/11/18	CHECKED BY DTITUS 2012/01/13	APPROVED BY DTITUS 2012/01/13	MAXLOC SHIELDED CORD GRIP ASSEMBLY 1AWG TO 2/0AWG MOLEX INCORPORATED SD-130199-001																		
DRAFT WHERE APPLICABLE MUST REMAIN WITHIN DIMENSIONS																					
MATERIAL NO.	DOCUMENT NO.	SHEET NO. 2 OF 2																			
THIS DRAWING CONTAINS INFORMATION THAT IS PROPRIETARY TO MOLEX INCORPORATED AND SHOULD NOT BE USED WITHOUT WRITTEN PERMISSION																					