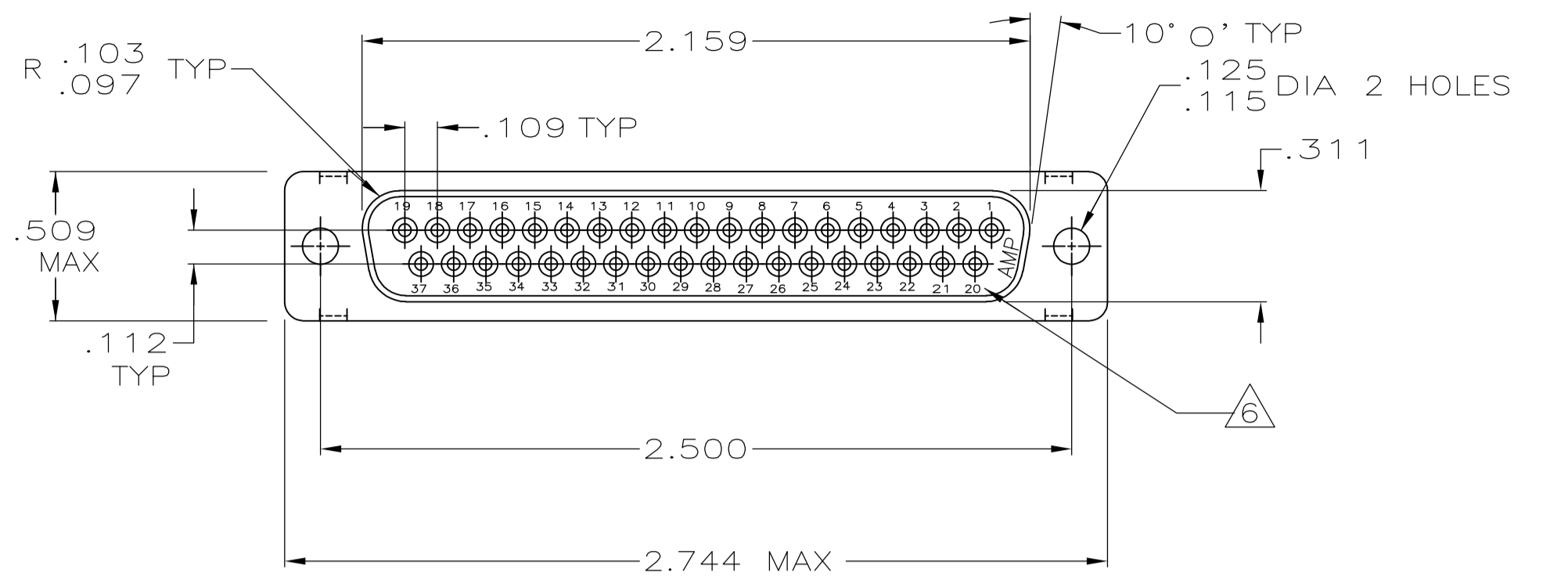
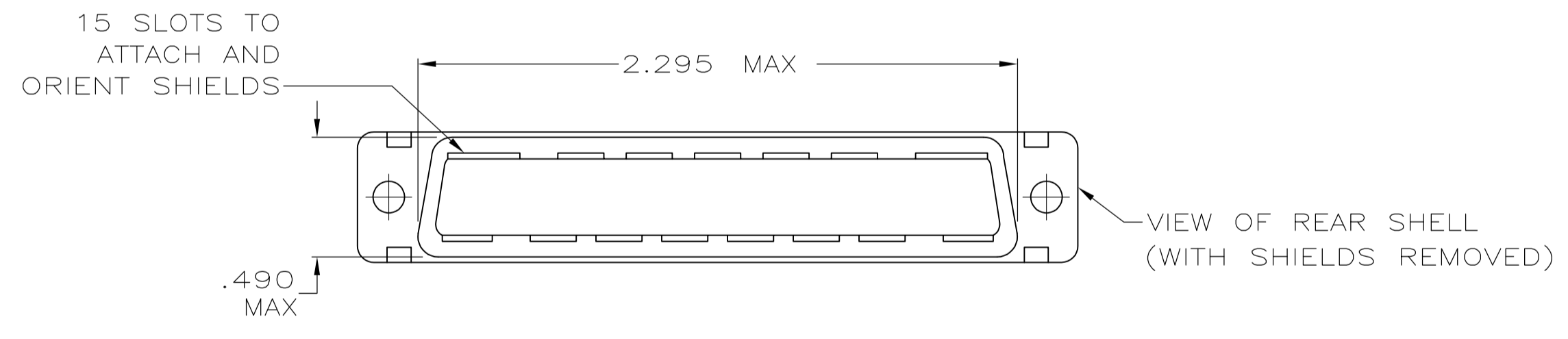
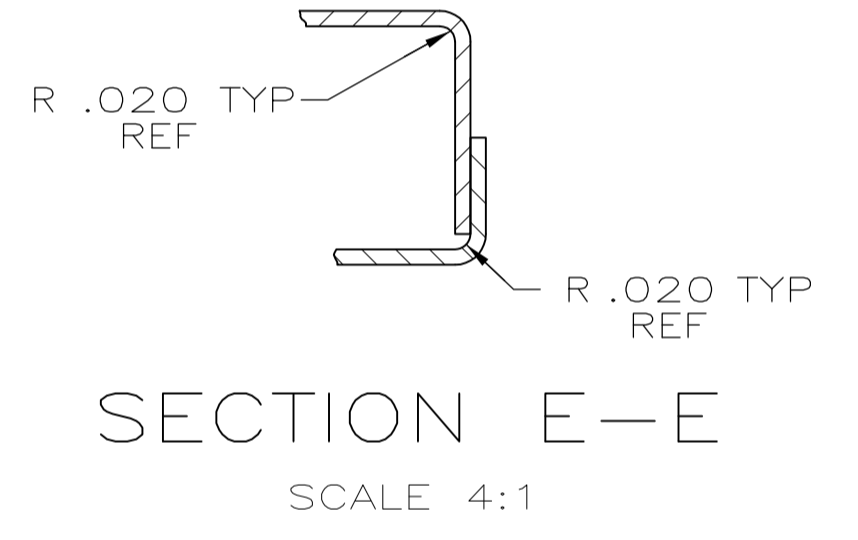
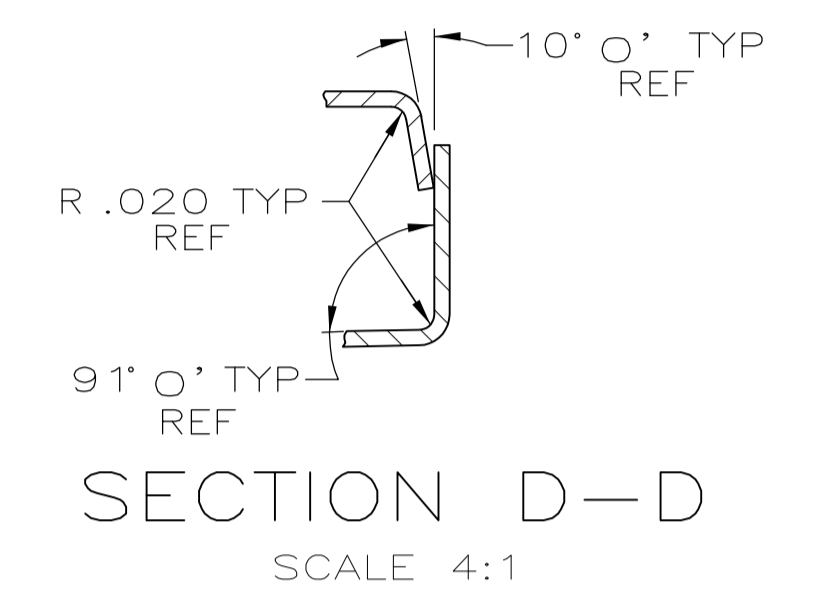
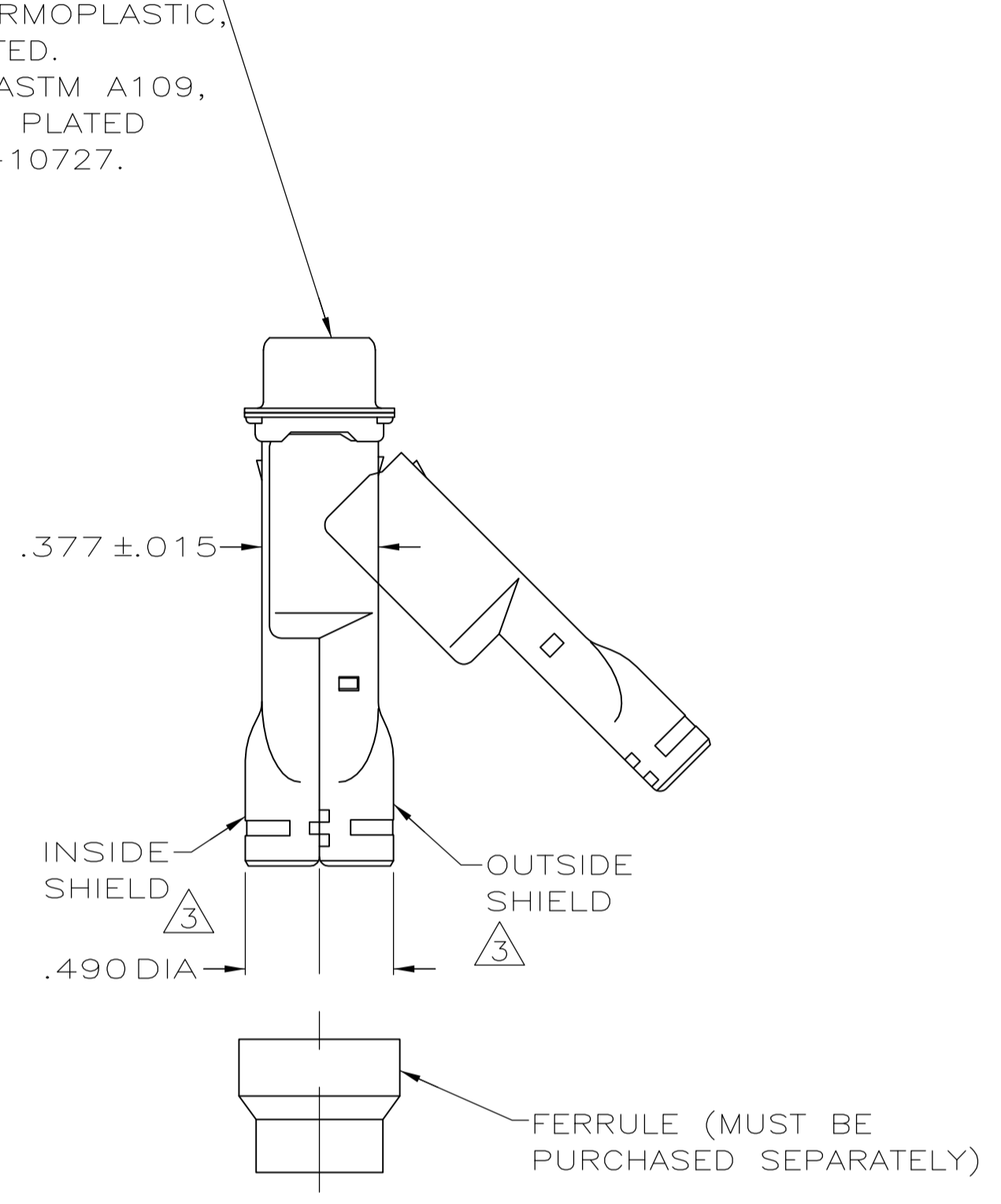
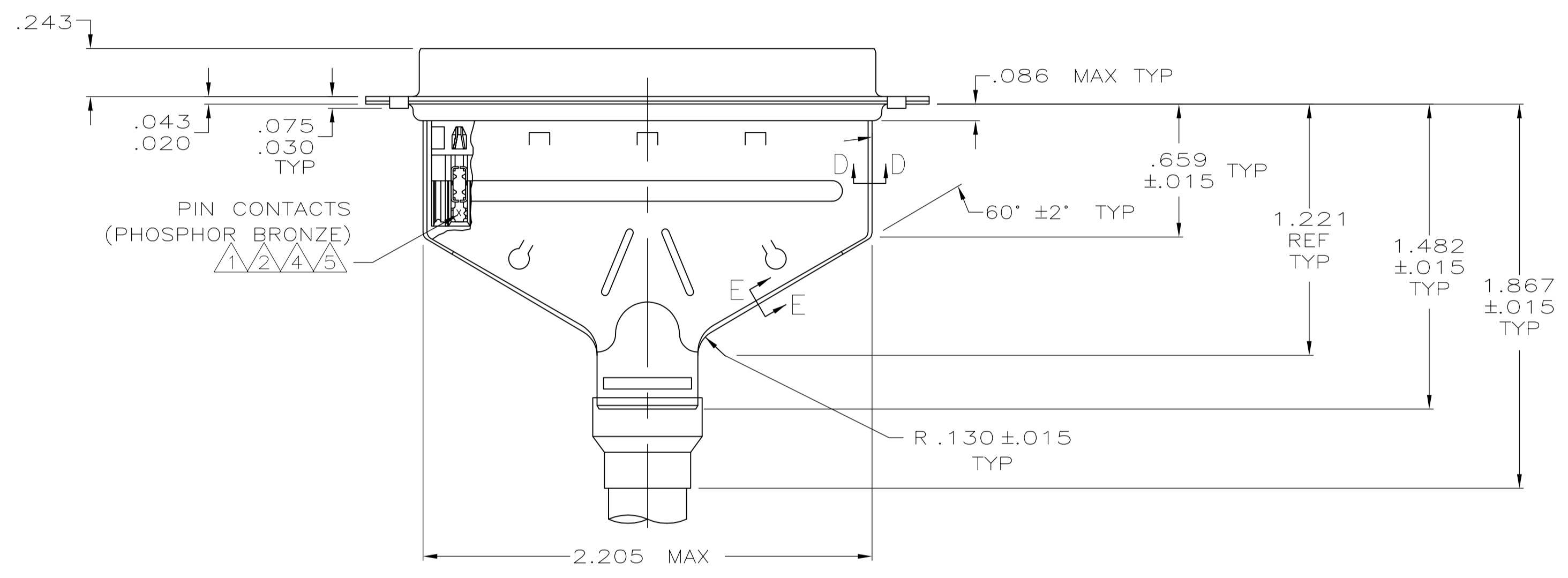


LOC		DIST		REVISONS			
GP	00	REV	DATE	BY	CHK	APP	REV
		F2	10AUG07	JDP	CWR		
		F3	15SEP09	KK	AEG		



RCPT CONNECTOR
 INSERT: BLACK THERMOPLASTIC,
 94V-0 RATED.
 SHELL: STEEL PER ASTM A109,
 BRIGHT TIN PLATED
 PER MIL-T-10727.



- ① RCPT CONNECTOR FULLY LOADED WITH CONTACTS. ALL OTHER PARTS SHIPPED UNASSEMBLED (EACH PART INDIVIDUALLY BULK PACKED).
- ② NUMBER ON CONTACT INDICATES WIRE RANGE.
- ③ SHIELDS: MATERIAL-.020 THICK STEEL, TIN PLATED.
- ④ CONTACTS PLATED .000030 GOLD ON MATING END FOR .150 MIN LENGTH. .000100-.000200 BRIGHT TIN OR BRIGHT TIN-LEAD IN WIRE TERMINATION AREA. .000050 NICKEL UNDERPLATE ON ENTIRE CONTACT.
- ⑤ CONTACTS PLATED WITH GOLD FLASH ON MATING END FOR .150 MIN LENGTH. .000100-.000200 BRIGHT TIN OR BRIGHT TIN-LEAD IN WIRE TERMINATION AREA. .000030 NICKEL UNDERPLATE ON ENTIRE CONTACT.
- ⑥ RAISED CAVITY IDENTIFICATION AND AMP TRADEMARK.
- ⑦ CONTACTS PLATED .000050 GOLD ON MATING END FOR .150 MIN LENGTH. .000100-.000200 BRIGHT TIN OR BRIGHT TIN-LEAD IN WIRE TERMINATION AREA. .000050 NICKEL UNDERPLATE IN ENTIRE CONTACT.
- ⑧ CONTACTS PLATED WITH GOLD FLASH ON MATING END FOR .150 MIN LENGTH. .000100-.000200 MATTE TIN IN WIRE TERMINATION AREA, .000030 MIN NICKEL UNDERPLATE ON ENTIRE CONTACT.
- ⑨ OBSOLETE PARTS: OBSOLETE CIS STREAMLINING PER D.RENAUD/D.SINISI

REV	DESCRIPTION	DATE	BY	CHK	APP	REV
8	2	#22-26	747564-9			
9	1	#26-30	747564-8			
7	2	#22-26	747564-7			
3	3	#20-22	747564-6			
5	2	#22-26	747564-5			
1	1	#26-30	747564-4			
3	3	#20-22	747564-3			
4	2	#22-26	747564-2			
1	1	#26-30	747564-1			
CONTACT FINISH		②				
WIRE RANGE						
PART NUMBER						

THIS DRAWING IS A CONTROLLED DOCUMENT.

DIMENSIONS: INCHES

TOLERANCES UNLESS OTHERWISE SPECIFIED:

0. PLC	± .005
1. PLC	± .005
2. PLC	± .005
3. PLC	± .005
4. PLC	± .005
ANGLES	± 0° 30'

MATERIAL: SEE CALL OUT

FINISH: SEE CALL OUT

APPROVED: L. VARELA - DOCKS (11-17-04), J. GRACE (11-17-04), M. WALMSLEY (11-17-04)

NAME: M. WALMSLEY

APPLICATION SPEC: 114-40002

WEIGHT: -

CUSTOMER DRAWING

Tyco Electronics Corporation, Harrisburg, PA 17105-3608

KIT, RCPT, SHIELDING HARDWARE, SIZE 4, 37 POSN, HDE-20, AMPLITE

SIZE: A1, CAGE CODE: 00779, DRAWING NO: 747564

SCALE: 2:1, SHEET: 1 OF 1, REV: F3