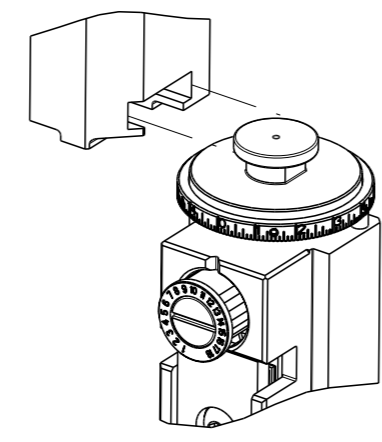


| PART NUMBER | REVISION | DESCRIPTION                      | FEED TYPE  |
|-------------|----------|----------------------------------|------------|
| 2151423-1   | B        | FINE CRIMP HEIGHT ADJUST         | MECHANICAL |
| 2151423-2   | B        | FINE CRIMP HEIGHT ADJUST         | PNEUMATIC  |
| 7-2151423-1 | B        | MECHANICAL AND CRIMP TOOLING KIT | MECHANICAL |
| 7-2151423-2 | B        | PNEUMATIC AND CRIMP TOOLING KIT  | PNEUMATIC  |
| 7-2151423-7 | A        | CRIMP TOOLING KIT                | -          |

ATLANTIC VERSION TERMINATOR INTERFACE ADAPTER

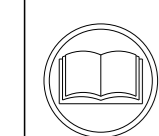


| APPLICATOR DATA |                |      |
|-----------------|----------------|------|
| CRIMP           | SIZE           | TYPE |
| WIRE            | 1.50 mm [.059] | F    |
| INSUL           | 1.50 mm [.059] | F    |

APPLICATOR INSTRUCTIONS  
408-35042

| TERMINAL DATA: JST TERMINAL         |                   | JST CRIMP SPECIFICATION       |                   |
|-------------------------------------|-------------------|-------------------------------|-------------------|
| TERMINAL NAME: 0.64 FEMALE TERMINAL |                   |                               |                   |
| WIRE STRIP LENGTH                   |                   | INSULATION DIAMETER RANGE     |                   |
| 4.20-4.20 mm [1.65-.165 IN]         |                   | Ø1.40-1.70 mm [0.055-.067 IN] |                   |
| TERMINAL APPLICATION SPECIFICATION  | CHM-1-2078 Rev R5 |                               |                   |
| TERMINALS APPLIED                   |                   |                               |                   |
| TE TERMINAL                         | JST TERMINAL      | TE TERMINAL                   | JST TERMINAL      |
| 1572627-1                           | SNAC3-A021T-M064  | 1572627-3                     | SNAC3-A021GF-M064 |
| 1572627-2                           | SNAC3-A021GI-M064 |                               |                   |

| WIRE SIZE         | CRIMP HEIGHT mm [INCH]         | CRIMP HEIGHT REFERENCE SETTING |
|-------------------|--------------------------------|--------------------------------|
| 20 AWG OR 0.50mm2 | 1.13 +/- 0.03 [0.044 +/- .001] | 6.2                            |
| 22 AWG OR 0.30mm2 | 1.00 +/- 0.03 [0.039 +/- .001] | 7.6                            |



- 1. RECOMMENDED SPARE PARTS
- 2. REFER TO SUPPLIED INSTRUCTION SHEET FOR CLEANING, LUBRICATION AND STORAGE OF APPLICATOR.
- 3. APPLY PART NUMBER 2-23419-6 LOCTITE TO THREADS OF ITEM 242.
- 4. CRIMP HEIGHT REFERENCE SETTING WAS THE SETTING USED WHEN THE APPLICATOR WAS QUALIFIED AT THE FACTORY. ADJUSTMENT MAY BE NECESSARY WHEN RUNNING APPLICATOR IN THE FIELD.
- 5. 22AWG OR 0.3mm2 NOT RECOMMENDED PER JST CHM-1-2078.
- 6. UNLESS SPECIFIED OTHERWISE TORQUE VALUES SHALL BE USED PER DOCUMENT, 101-35000.

**\*WARNING**  
ON INSTALLATION, SET WIRE DISC TO CRIMP HEIGHT REFERENCE SETTING FOR LARGEST WIRE SIZE. CRIMP HEIGHT REFERENCE SETTINGS GREATER THAN THE VALUE SHOWN MAY CAUSE DAMAGE TO THE CRIMP TOOLING, REFER TO THE INSTRUCTION SHEET FOR PROPER SETUP AND ADJUSTMENTS.

ATLANTIC VERSION  
Shown on sheets 1 of 4 & 2 of 4  
(Pacific version shown on sheets 3 of 4 & 4 of 4)

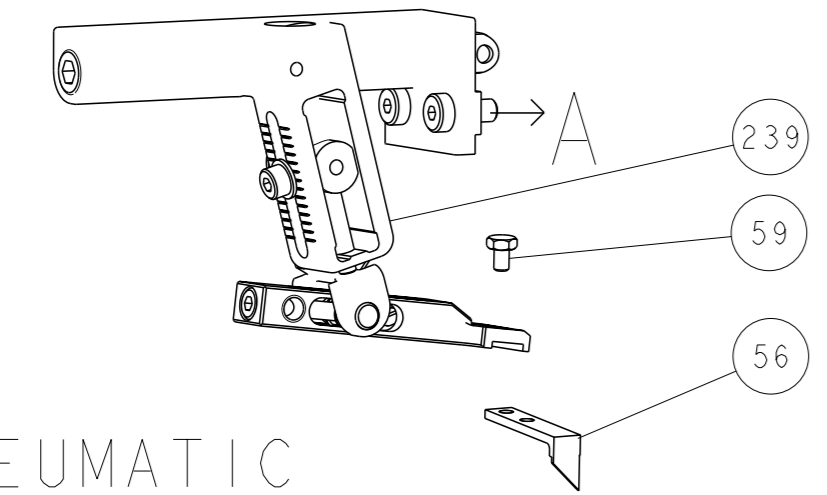
| LOC | DIST | REVISIONS |               |           |       |
|-----|------|-----------|---------------|-----------|-------|
|     |      | REV       | DATE          | BY        | APPV  |
| A   | 66   | A         | RELEASED      | 08APR2015 | KH GB |
|     |      | B         | ECR-21-006712 | 05JUL2021 | FJ TE |

|   |     |     |     |     |             |                                     |                               |   |
|---|-----|-----|-----|-----|-------------|-------------------------------------|-------------------------------|---|
| - | 1   | -   | 1   | -   | 2119641-1   | FEED CAM, AIR FEED                  | 248                           |   |
| - | 1   | 1   | 1   | 1   | 2119082-4   | CAM, SNAIL, INSULATION ADJUSTMENT   | 244                           |   |
| - | 1   | 1   | 1   | 1   | 2079764-1   | WASHER, WAVE SPRING, CREST-TO-CREST | 243                           |   |
| - | 1   | 1   | 1   | 1   | 2119083-1   | RETAINER, INSULATION DIAL           | 242                           |   |
| - | 1   | 1   | 1   | 1   | 7-18023-7   | SCR, SKT HD CAP M3 X 4.0            | 241                           |   |
| - | -   | 1   | -   | 1   | 2119580-1   | MECHANICAL FEED ASSEMBLY            | 239                           |   |
| - | 1   | -   | 1   | -   | 2844940-1   | AIR FEED MODULE                     | 238                           |   |
| - | REF | REF | REF | REF | 994970-2    | COUNTER, MAGNETIC                   | 164                           |   |
| - | 1   | 1   | 1   | 1   | 2844908-1   | SCREW, LOCKING                      | 99                            |   |
| - | 1   | 1   | 1   | 1   | 2844907-1   | POST, LOCKING                       | 98                            |   |
| - | 1   | 1   | 1   | 1   | 455888-5    | SPACER, CRIMPER                     | 82                            |   |
| - | 1   | 1   | 1   | 1   | 1803607-3   | DOCUMENTATION PACKAGE               | 71                            |   |
| - | 1   | 1   | 1   | 1   | 2119740-1   | TAG, IDENTIFICATION                 | 67                            |   |
| - | 2   | 2   | 2   | 2   | 2168078-1   | SCREW, DRIVE, RH, RoHS, 2 x .188    | 66                            |   |
| - | 1   | 1   | 1   | 1   | 2168083-2   | SCR, SKT HD CAP, RoHS, M4 X 8.0     | 60                            |   |
| - | 1   | 1   | 1   | 1   | 5-18022-5   | SCR, HEX HD CAP, M4 X 6.0           | 59                            |   |
| - | 1   | 1   | 1   | 1   | 1338685-1   | PAWL, FEED                          | 56                            |   |
| - | 4   | 4   | 4   | 4   | 2168083-3   | SCR, SKT HD CAP, RoHS, M4 X 12.0    | 54                            |   |
| - | 2   | 2   | 2   | 2   | 1-2168083-0 | SCR, SKT HD CAP, RoHS, M4 X 10      | 53                            |   |
| - | 1   | 1   | 1   | 1   | 5018030-1   | NUT, HEX, REG, RoHS, M3             | 52                            |   |
| - | 1   | 1   | 1   | 1   | 811242-5    | BUMPER, HOLD DOWN                   | 51                            |   |
| - | 1   | 1   | 1   | 1   | 690753-2    | SPACER, TONKER                      | 50                            |   |
| - | 1   | 2   | 1   | 2   | 18023-9     | SCR, SKT HD CAP M4 X 6.0            | 49                            |   |
| - | -   | 1   | -   | 1   | 2119652-1   | FEED CAM, PRE FEED                  | 48                            |   |
| - | -   | 1   | -   | 1   | 2119653-1   | FEED CAM, POST FEED                 | 47                            |   |
| - | 1   | 1   | 1   | 1   | 1803583-9   | APPLICATOR BASIC ASSEMBLY, SF       | 46                            |   |
| - | 1   | 1   | 1   | 1   | 1803515-1   | RAM ASSEMBLY, SF ATLANTIC           | 44                            |   |
| - | 1   | 1   | 1   | 1   | 1803602-1   | SCR, BHSC, RoHS (M8 X 25)           | 41                            |   |
| - | 1   | 1   | 1   | 1   | 3-1752356-3 | SUPPORT, TERMINAL                   | 34                            |   |
| - | 2   | 2   | 2   | 2   | 2079383-5   | SCR, BHSC, RoHS (M4 X 20)           | 33                            |   |
| - | 2   | 2   | 2   | 2   | 2-2844962-6 | SPACER, CYLINDRICAL, STRIP GUIDE    | 30                            |   |
| - | 1   | 1   | 1   | 1   | 2844992-1   | ASSEMBLY, STRIP GUIDE               | 29                            |   |
| - | 1   | 1   | 1   | 1   | 455888-3    | SPACER, CRIMPER                     | 28                            |   |
| - | 1   | 1   | 1   | 1   | 1320928-2   | STRIP GUIDE                         | 24                            |   |
| - | 1   | 1   | 1   | 1   | 2168083-2   | SCR, SKT HD CAP, RoHS, M4 X 8.0     | 21                            |   |
| - | 2   | 2   | 2   | 2   | 1-18028-2   | WASHER, FLAT, REG M4                | 20                            |   |
| - | 1   | 1   | 1   | 1   | 2119533-1   | STRIPPER, SIDE FEED                 | 19                            |   |
| - | 1   | 1   | 1   | 1   | 2119806-1   | INSERT, SHEAR                       | 13                            |   |
| - | 1   | 1   | 1   | 1   | 3-22280-3   | SPRING, COMPRESSION                 | 12                            |   |
| - | 1   | 1   | 1   | 1   | 1-356885-4  | STOP, SHEAR                         | 11                            |   |
| - | 1   | 1   | 1   | 1   | 2119805-1   | SHEAR HOLDER, FRONT                 | 10                            |   |
| - | 1   | 1   | 1   | 1   | 1803095-6   | FLOATING SHEAR, FRONT               | 9                             |   |
| - | 1   | 2   | 2   | 1   | 1           | 5-1803056-1                         | ANVIL, COMBINATION            | 8 |
| - | -   | -   | -   | -   | -           | -                                   | 7                             |   |
| - | -   | -   | -   | -   | -           | -                                   | 6                             |   |
| - | 1   | 1   | 1   | 1   | 2119757-8   | DEPRESSOR, SHEAR                    | 5                             |   |
| - | 1   | 1   | 1   | 1   | 2-238011-2  | BLOCK, CRIMPER SPACER               | 4                             |   |
| - | 1   | 2   | 2   | 1   | 1           | 9-1633961-3                         | CRIMPER, INSULATION F PREMIUM | 3 |
| - | 1   | 1   | 1   | 1   | 455888-7    | SPACER, CRIMPER                     | 2                             |   |
| - | 1   | 2   | 2   | 1   | 1           | 6-1633713-0                         | CRIMPER, WIRE PREMIUM         | 1 |
| - | 77  | 72  | 71  | -2  | -1          | PART NO                             | ITEM NO                       |   |

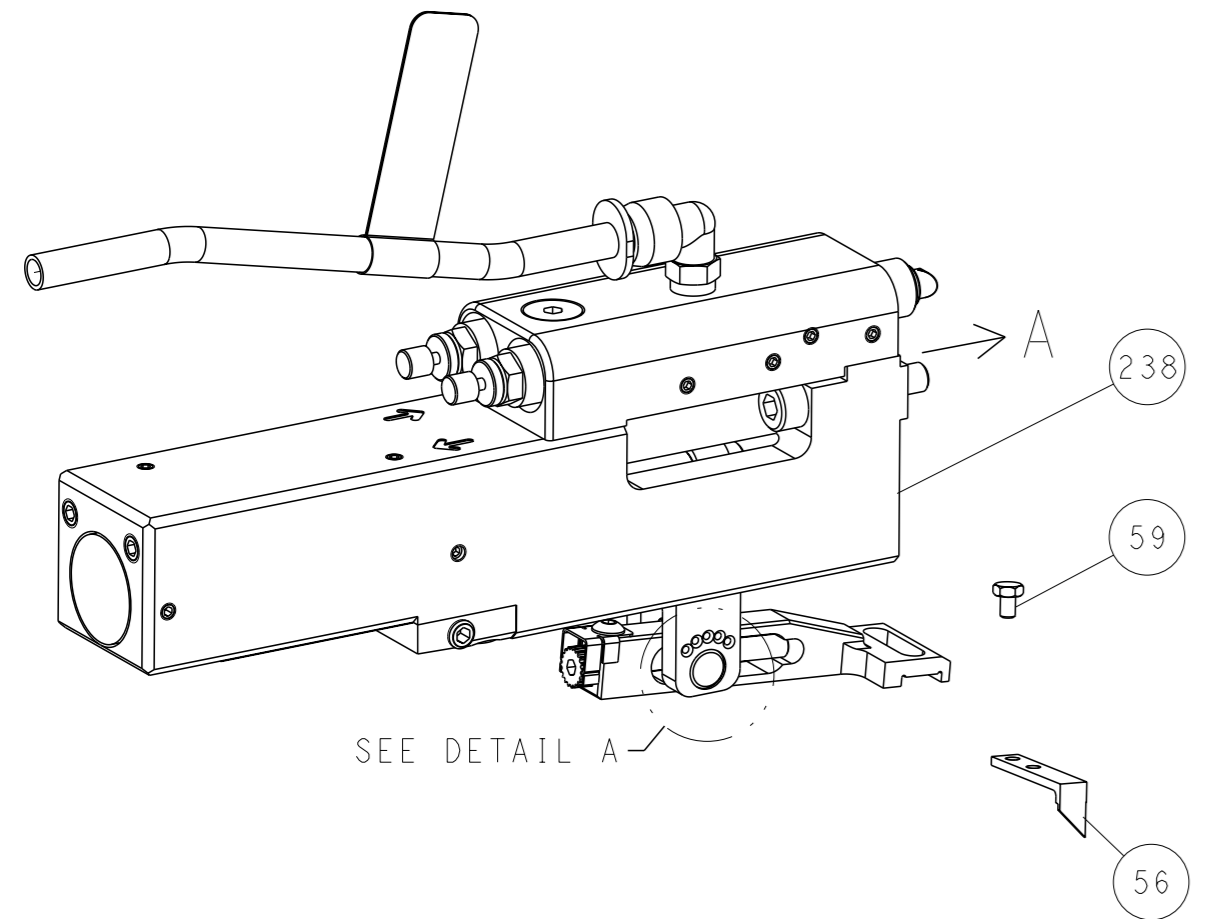
| DIMENSIONS: |         | TOLERANCES UNLESS OTHERWISE SPECIFIED: |         | OWN      |         | DATE      |        | NAME     |           |
|-------------|---------|--|---------|----------|---------|-----------|--------|----------|-----------|
| mm          | 0 PLC ± | 1 PLC ±                                | 2 PLC ± | 3 PLC ±  | 4 PLC ± | ANGLES    | FINISH | OWN      | DATE      |
|             |         |  |         |          |         |           |        | H. HUANG | 28FEB2015 |
|             |         |  |         |          |         |           |        | L. ZHANG | 28FEB2015 |
|             |         |  |         |          |         |           |        | U. GUO   | 28FEB2015 |
| MATERIAL    |         | WEIGHT                                 |         | SCALE    |         | SHEET     |        | REV      |           |
|             |         |  |         | A1 00779 |         | C=2151423 |        | 1 OF 4   |           |

| LOC | DIST | REVISIONS   |      |     |      |
|-----|------|-------------|------|-----|------|
| A   | 66   | REV         | DATE | OWN | APVD |
| -   | -    | SEE SHEET 1 | -    | -   | -    |

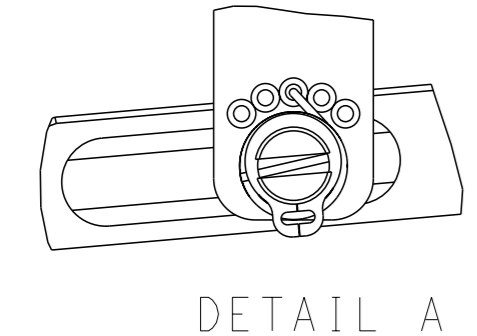
# FEED TYPE MECHANICAL



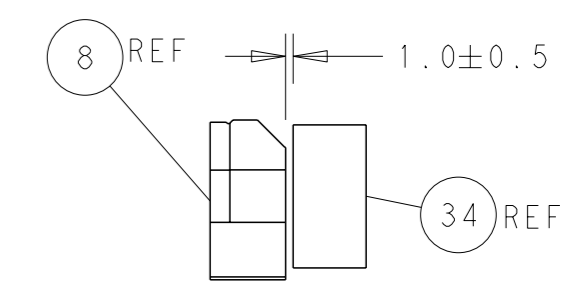
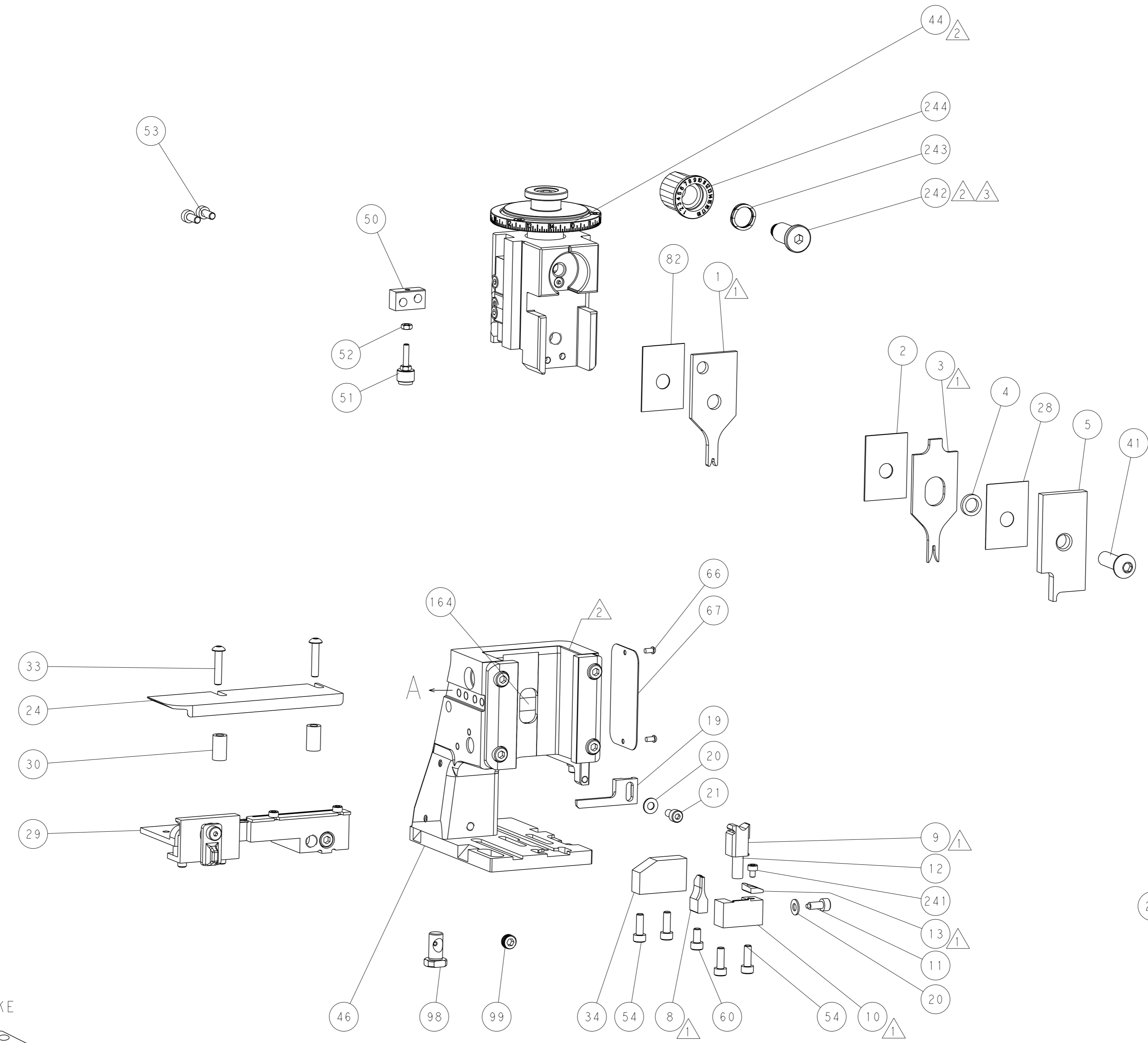
## PNEUMATIC



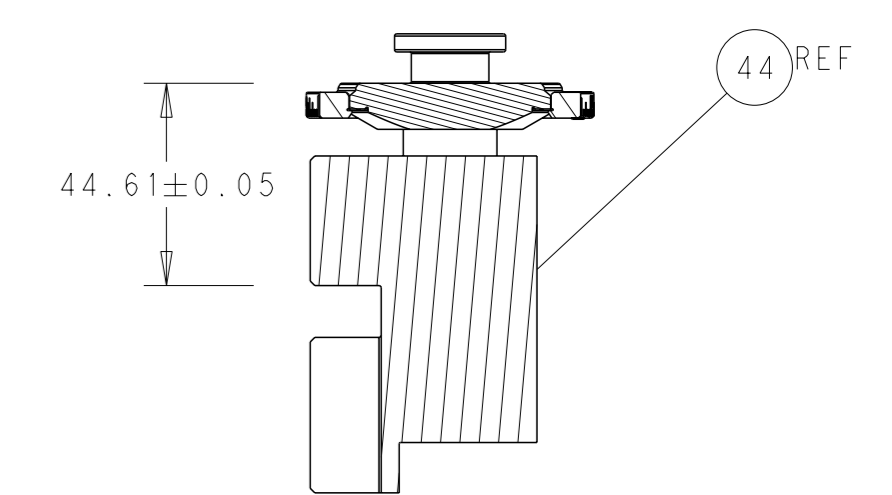
## FEED SPRING SETTING POSITION (SHOWN FROM REAR SIDE)



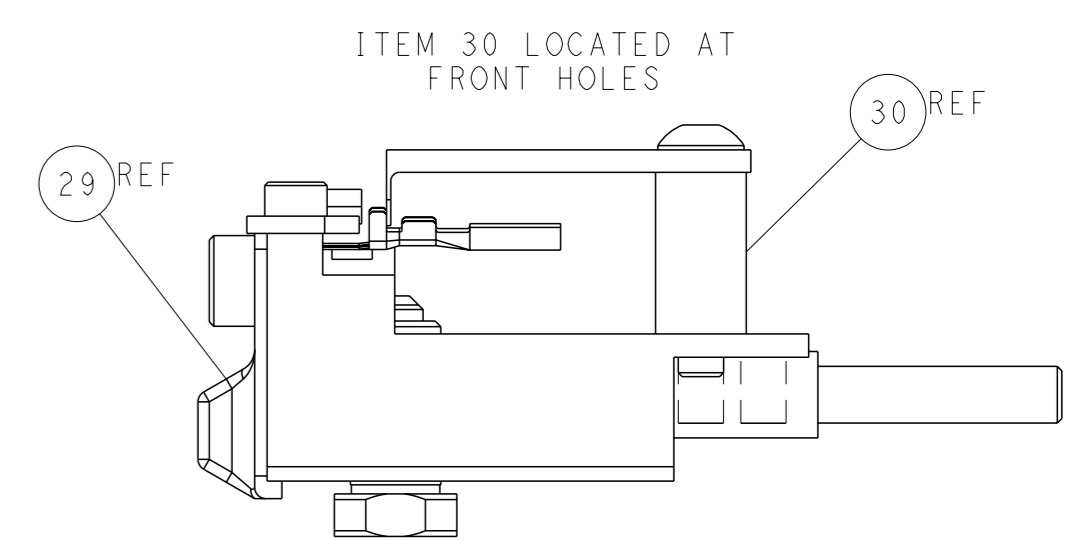
DETAIL A



TERMINAL SUPPORT LOCATION

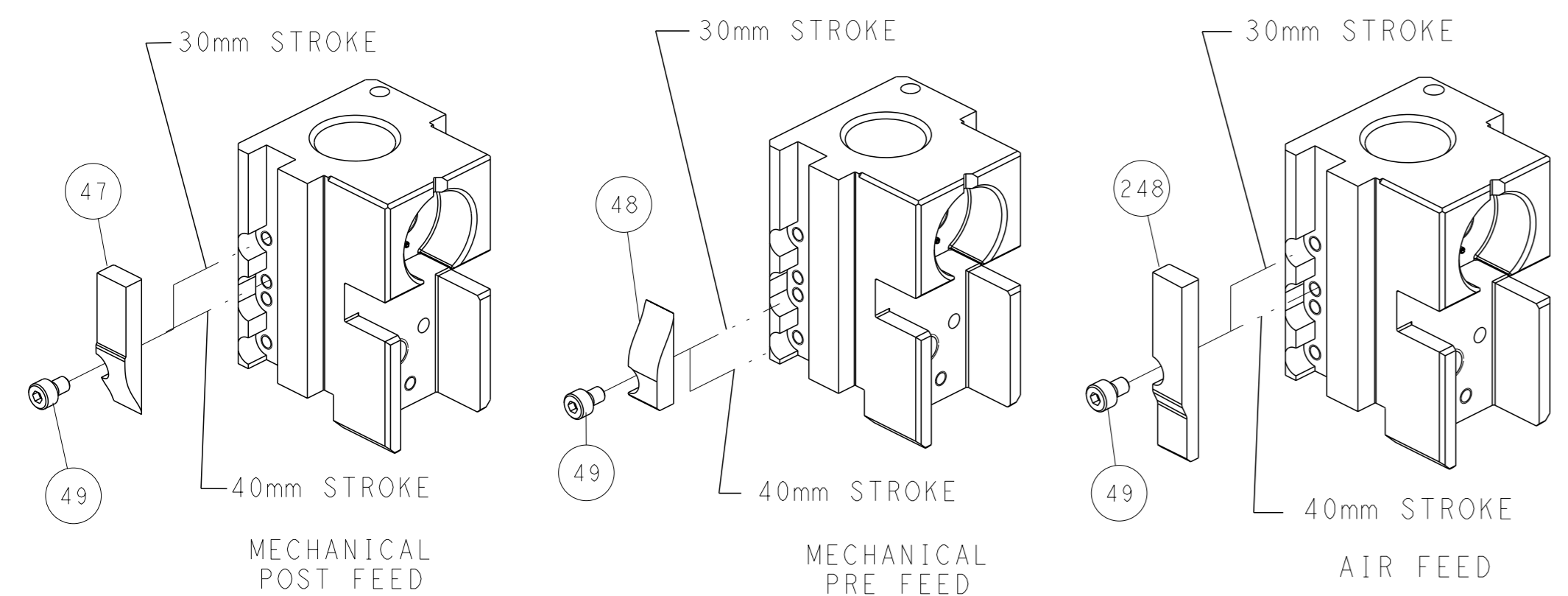


RAM SET-UP



FEED TRACK POSITION GUIDE BY INSULATION BARREL

# CAM POSITIONS

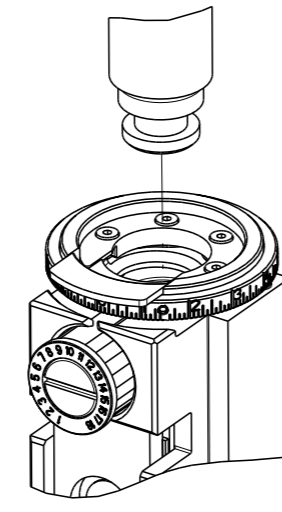


**ATLANTIC VERSION**  
 Shown on sheets 1 of 4 & 2 of 4  
 (Pacific version shown on sheets 3 of 4 & 4 of 4)

|   |  |  |   |  |
|---|--|--|---|--|
| DIMENSIONS: mm<br>TOLERANCES UNLESS OTHERWISE SPECIFIED:<br>0 PLC ±<br>1 PLC ±<br>2 PLC ±<br>3 PLC ±<br>4 PLC ±<br>ANGLES ± |  | OWN: H. HUANG<br>CHK: L. ZHANG<br>APVD: J. GUO<br>PRODUCT SPEC<br>APPLICATION SPEC<br>WEIGHT: -<br>MATERIAL: - | DATE: 28FEB2015<br>DATE: 28FEB2015<br>DATE: 28FEB2015<br>NAME: Ocean Side Feed Applicator<br>SIZE: A1<br>CAGE CODE: 00779<br>DRAWING NO: C=2151423<br>SCALE: 1:2<br>SHEET: 2 of 4<br>REV: B | TE Connectivity<br>Harrisburg, PA 17105-3608<br>RESTRICTED TO: - |
|---|--|--|---|--|

|  |                          |                          |            |
|--|--------------------------|--------------------------|------------|
| THIS DRAWING IS UNPUBLISHED.   | RELEASED FOR PUBLICATION |                          |            |
| © COPYRIGHT 20 BY TYCO ELECTRONICS CORPORATION. ALL RIGHTS RESERVED. | 20                       |                          |            |
| PART NUMBER  | REVISION                 | DESCRIPTION              | FEED TYPE  |
| 2-2151423-1  | B                        | FINE CRIMP HEIGHT ADJUST | MECHANICAL |
| 2-2151423-2  | B                        | FINE CRIMP HEIGHT ADJUST | PNEUMATIC  |
| 7-2151423-7  | A                        | CRIMP TOOLING KIT        | -          |

PACIFIC VERSION TERMINATOR  
INTERFACE ADAPTER



| APPLICATOR DATA                      |                |      |
|--------------------------------------|----------------|------|
| CRIMP                                | SIZE           | TYPE |
| WIRE                                 | 1.50 mm [.059] | F    |
| INSUL                                | 1.50 mm [.059] | F    |
| APPLICATOR INSTRUCTIONS<br>408-35042 |                |      |

|                                     |                   |                              |                   |
|-------------------------------------|-------------------|------------------------------|-------------------|
| TERMINAL DATA: JST TERMINAL         |                   | JST CRIMP SPECIFICATION      |                   |
| TERMINAL NAME: 0.64 FEMALE TERMINAL |                   |                              |                   |
| WIRE STRIP LENGTH                   |                   | INSULATION DIAMETER RANGE    |                   |
| 4.20-4.20 mm [.165-.165 IN]         |                   | Ø1.40-1.70 mm [.055-.067 IN] |                   |
| TERMINAL APPLICATION SPECIFICATION  | CHM-1-2078 Rev R5 |                              |                   |
| TERMINALS APPLIED                   |                   |                              |                   |
| TE TERMINAL                         | JST TERMINAL      | TE TERMINAL                  | JST TERMINAL      |
| 1572627-1                           | SNAC3-A021T-M064  | 1572627-3                    | SNAC3-A021GF-M064 |
| 1572627-2                           | SNAC3-A021GI-M064 |                              |                   |

| WIRE SIZE                     | CRIMP HEIGHT mm [INCH]        | CRIMP HEIGHT REFERENCE SETTING |
|-------------------------------|-------------------------------|--------------------------------|
| 20 AWG OR 0.50mm <sup>2</sup> | 1.13 +/- 0.03 [.044 +/- .001] | 6.2                            |
| 22 AWG OR 0.30mm <sup>2</sup> | 1.00 +/- 0.03 [.039 +/- .001] | 7.6                            |



- 1 RECOMMENDED SPARE PARTS
- 2 REFER TO SUPPLIED INSTRUCTION SHEET FOR CLEANING, LUBRICATION AND STORAGE OF APPLICATOR.
- 3 APPLY PART NUMBER 2-23419-6 LOCTITE TO THREADS OF ITEM 242.
- 4 CRIMP HEIGHT REFERENCE SETTING WAS THE SETTING USED WHEN THE APPLICATOR WAS QUALIFIED AT THE FACTORY. ADJUSTMENT MAY BE NECESSARY WHEN RUNNING APPLICATOR IN THE FIELD.
- 5 22AWG OR 0.3mm<sup>2</sup> NOT RECOMMENDED PER JST CHM-1-2078.
- 6. UNLESS SPECIFIED OTHERWISE TORQUE VALUES SHALL BE USED PER DOCUMENT, 101-35000.

**\*WARNING**  
ON INSTALLATION, SET WIRE DISC TO CRIMP HEIGHT REFERENCE SETTING FOR LARGEST WIRE SIZE. CRIMP HEIGHT REFERENCE SETTINGS GREATER THAN THE VALUE SHOWN MAY CAUSE DAMAGE TO THE CRIMP TOOLING. REFER TO THE INSTRUCTION SHEET FOR PROPER SETUP AND ADJUSTMENTS.

PACIFIC VERSION  
Shown on sheets 3 of 4 & 4 of 4  
(Atlantic version shown on sheets 1 of 4 & 2 of 4)

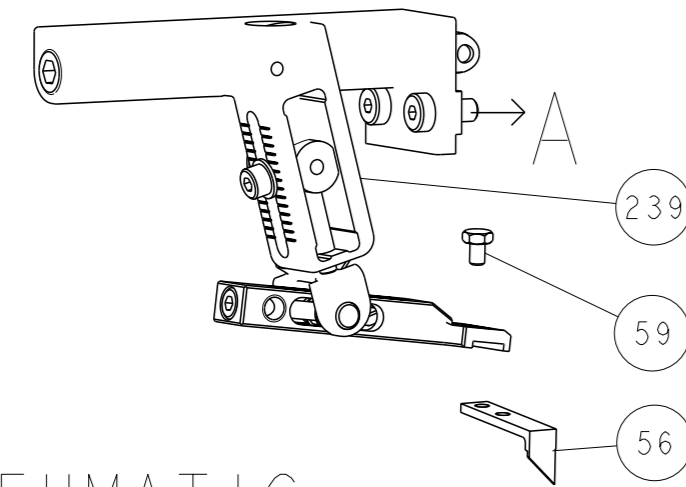
| LOC | DIST | REVISIONS |     |             |      |     |      |
|-----|------|-----------|-----|-------------|------|-----|------|
| A   | 66   | P         | LYR | DESCRIPTION | DATE | OWN | APVD |
|     |      | -         |     | SEE SHEET 1 |      |     |      |

|   |     |     |             |                                     |                           |     |
|---|-----|-----|-------------|-------------------------------------|---------------------------|-----|
| - | 1   | 1   | 2119082-4   | CAM, SNAIL, INSULATION ADJUSTMENT   | 244                       |     |
| - | 1   | 1   | 2079764-1   | WASHER, WAVE SPRING, CREST-TO-CREST | 243                       |     |
| 3 | -   | 1   | 1           | 2119083-1                           | RETAINER, INSULATION DIAL | 242 |
| - | 1   | 1   | 7-18023-7   | SCR, SKT HD CAP M3 X 4.0            | 241                       |     |
| - | -   | 1   | 2119580-1   | MECHANICAL FEED ASSEMBLY            | 239                       |     |
| - | 1   | -   | 2844940-1   | AIR FEED MODULE                     | 238                       |     |
| - | REF | REF | 994970-2    | COUNTER, MAGNETIC                   | 164                       |     |
| - | 1   | -   | 2119641-2   | FEED CAM, AIR FEED                  | 151                       |     |
| - | 1   | 1   | 2168083-8   | SCR, SKT HD CAP, RoHS, M4 X 16      | 144                       |     |
| - | 4   | 4   | 2168083-9   | SCR, SKT HD CAP, RoHS, M4 X 20      | 143                       |     |
| - | -   | 1   | 2119653-2   | FEED CAM, POST FEED                 | 142                       |     |
| - | 1   | 1   | 1-1803583-0 | APPLICATOR BASIC ASSEMBLY, SF       | 141                       |     |
| - | 1   | 1   | 1803516-1   | RAM ASSEMBLY, SF PACIFIC            | 140                       |     |
| - | 1   | 1   | 2844908-1   | SCREW, LOCKING                      | 99                        |     |
| - | 1   | 1   | 2844907-1   | POST, LOCKING                       | 98                        |     |
| - | 1   | 1   | 455888-5    | SPACER, CRIMPER                     | 82                        |     |
| - | 1   | 1   | 1803607-3   | DOCUMENTATION PACKAGE               | 71                        |     |
| - | 1   | 1   | 2119740-1   | TAG, IDENTIFICATION                 | 67                        |     |
| - | 2   | 2   | 2168078-1   | SCREW, DRIVE, RH, RoHS, 2 x .188    | 66                        |     |
| - | 1   | 1   | 5-18022-5   | SCR, HEX HD CAP, M4 X 6.0           | 59                        |     |
| - | 1   | 1   | 1338685-1   | PAWL, FEED                          | 56                        |     |
| - | 2   | 2   | 1-2168083-0 | SCR, SKT HD CAP, RoHS, M4 X 10      | 53                        |     |
| - | 1   | 1   | 5018030-1   | NUT, HEX, REG, RoHS, M3             | 52                        |     |
| - | 1   | 1   | 811242-5    | BUMPER, HOLD DOWN                   | 51                        |     |
| - | 1   | 1   | 690753-2    | SPACER, TONKER                      | 50                        |     |
| - | 1   | 2   | 18023-9     | SCR, SKT HD CAP M4 X 6.0            | 49                        |     |
| - | -   | 1   | 2119652-1   | FEED CAM, PRE FEED                  | 48                        |     |
| - | 1   | 1   | 1803602-1   | SCR, BHSC, RoHS (M8 X 25)           | 41                        |     |
| - | 1   | 1   | 3-1752356-3 | SUPPORT, TERMINAL                   | 34                        |     |
| - | 2   | 2   | 2079383-5   | SCR, BHSC, RoHS (M4 X 20)           | 33                        |     |
| - | 2   | 2   | 2-2844962-6 | SPACER, CYLINDRICAL, STRIP GUIDE    | 30                        |     |
| - | 1   | 1   | 2844992-1   | ASSEMBLY, STRIP GUIDE               | 29                        |     |
| - | 1   | 1   | 455888-3    | SPACER, CRIMPER                     | 28                        |     |
| - | 1   | 1   | 1320928-2   | STRIP GUIDE                         | 24                        |     |
| - | 1   | 1   | 2168083-2   | SCR, SKT HD CAP, RoHS, M4 X 8.0     | 21                        |     |
| - | 2   | 2   | 1-18028-2   | WASHER, FLAT, REG M4                | 20                        |     |
| - | 1   | 1   | 2119533-1   | STRIPPER, SIDE FEED                 | 19                        |     |
| 1 | -   | 1   | 2119806-1   | INSERT, SHEAR                       | 13                        |     |
| - | 1   | 1   | 3-22280-3   | SPRING, COMPRESSION                 | 12                        |     |
| - | 1   | 1   | 1-356885-4  | STOP, SHEAR                         | 11                        |     |
| - | 1   | 1   | 2119805-1   | SHEAR HOLDER, FRONT                 | 10                        |     |
| 1 | -   | 1   | 1803095-6   | FLOATING SHEAR, FRONT               | 9                         |     |
| 1 | 1   | 1   | 5-1803056-1 | ANVIL, COMBINATION                  | 8                         |     |
| - | -   | -   | -           | -                                   | 7                         |     |
| - | -   | -   | -           | -                                   | 6                         |     |
| - | 1   | 1   | 2119757-8   | DEPRESSOR, SHEAR                    | 5                         |     |
| - | 1   | 1   | 2-238011-2  | BLOCK, CRIMPER SPACER               | 4                         |     |
| 1 | 1   | 1   | 9-1633961-3 | CRIMPER, INSULATION F PREMIUM       | 3                         |     |
| - | 1   | 1   | 455888-7    | SPACER, CRIMPER                     | 2                         |     |
| 1 | 1   | 1   | 6-1633713-0 | CRIMPER, WIRE PREMIUM               | 1                         |     |
| - | -   | -   | -77-22-21   | PART NO                             | ITEM NO                   |     |

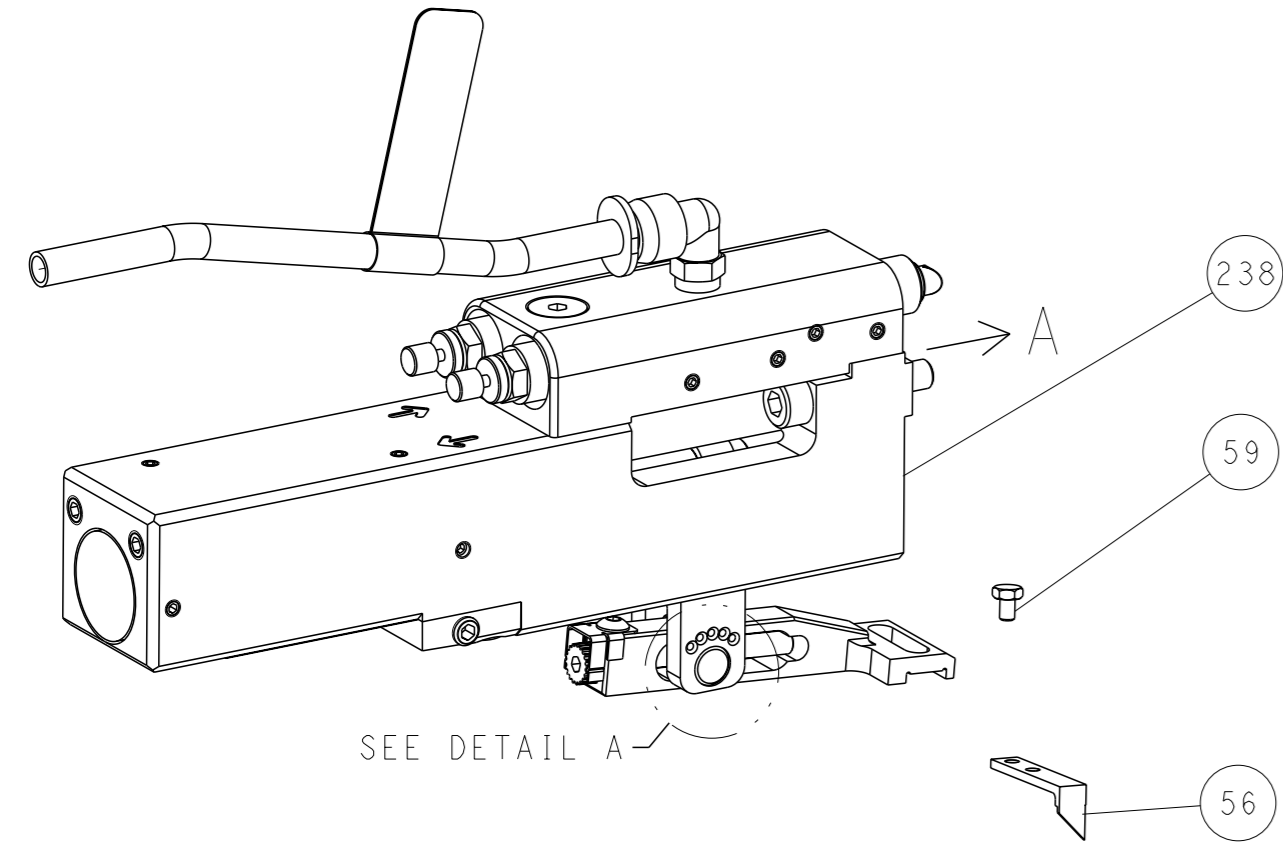
|   |   |  |  |
|---|---|--|--|
| <small>THIS DRAWING IS UNPUBLISHED. IT IS SUBJECT TO CHANGE AND THE USER ASSUMES ALL RESPONSIBILITY FOR THE CORRECTNESS OF THE INFORMATION SHOWN ON THIS DRAWING.</small> |   | OWN: H. HUANG 28FEB2015<br>CHK: L. ZHANG 28FEB2015<br>APVD: J. GUO 28FEB2015 | NAME: Ocean Side Feed Applicator<br>SIZE: A1<br>CAGE CODE: 00779<br>DRAWING NO: 2151423<br>SCALE: 1:2<br>SHEET: 3 of 4<br>REV: B |
| DIMENSIONS:   | TOLERANCES UNLESS OTHERWISE SPECIFIED:                                      | CUSTOMER ACCESSIBLE PRODUCTION DRAWING                                       |  |
| mm  | 0 PLC ±<br>1 PLC ±<br>2 PLC ±<br>3 PLC ±<br>4 PLC ±<br>ANGLES ±<br>FINISH ± | RESTRICTED TO: -   |  |

| LOC |    | DIST |     | REVISIONS   |      |     |      |
|-----|----|------|-----|-------------|------|-----|------|
| A   | 66 | P    | LYR | DESCRIPTION | DATE | OWN | APVD |
|     |    | -    |     | SEE SHEET 1 | -    | -   | -    |

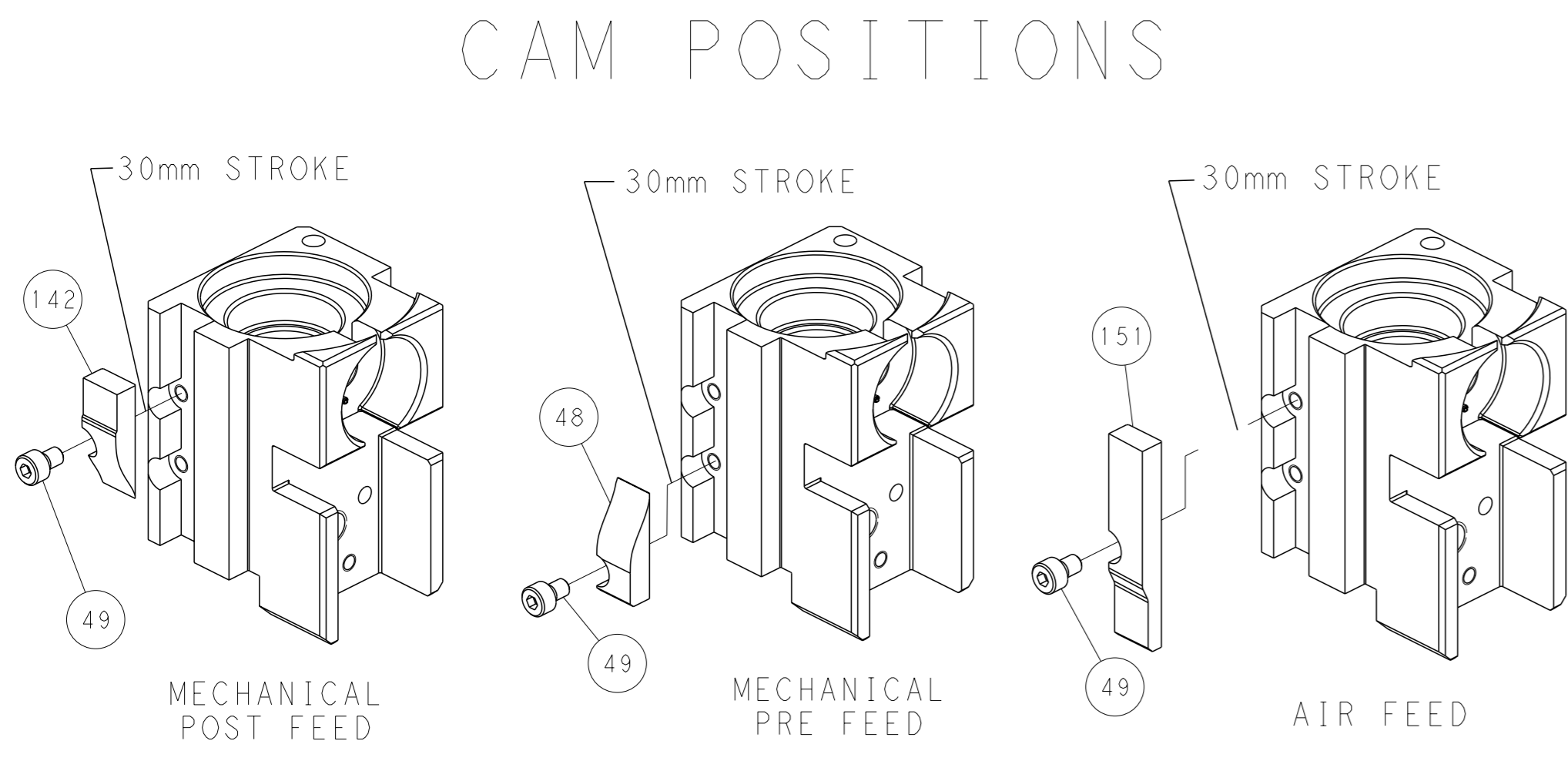
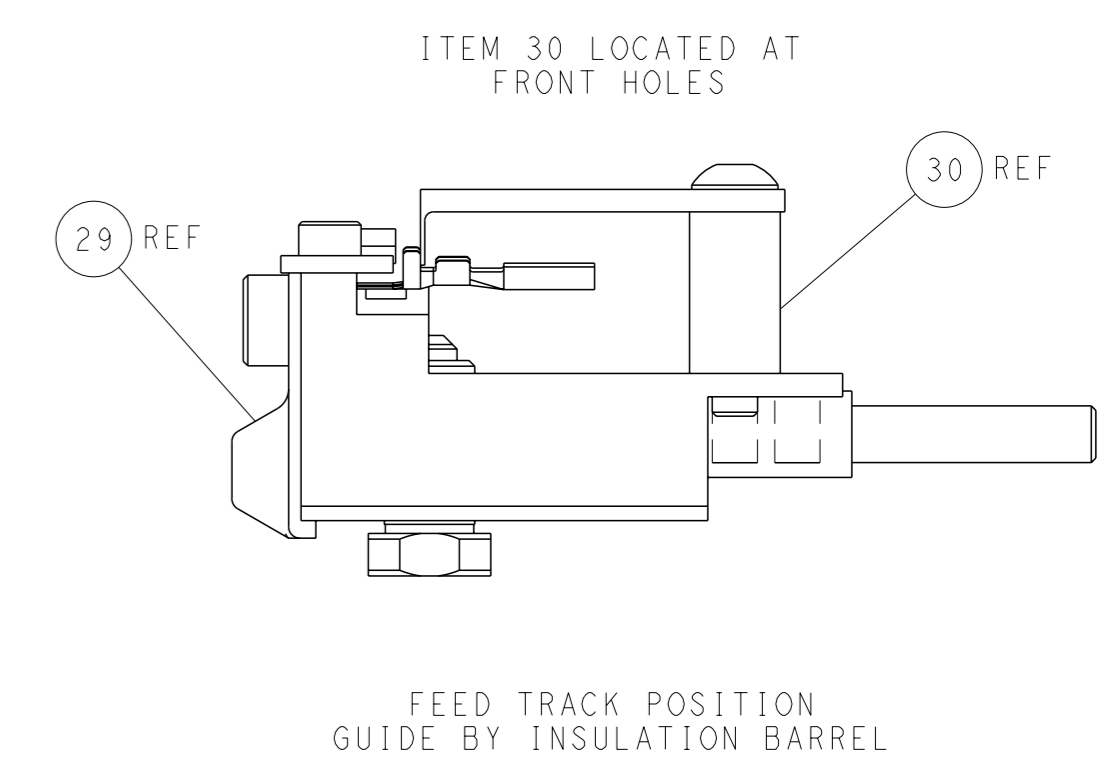
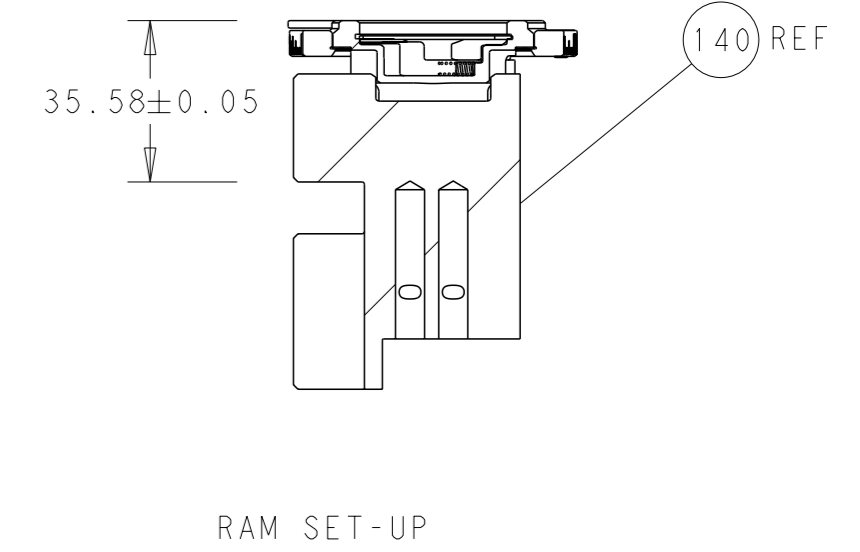
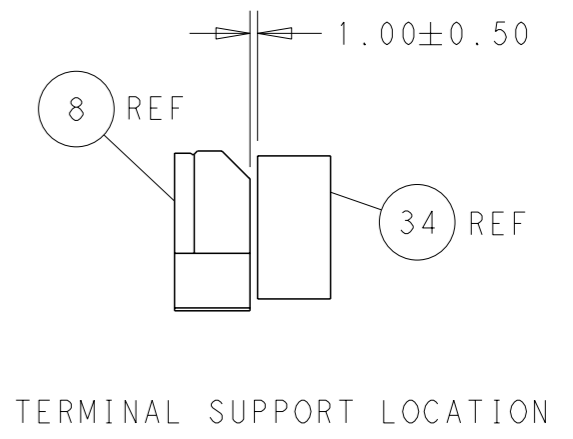
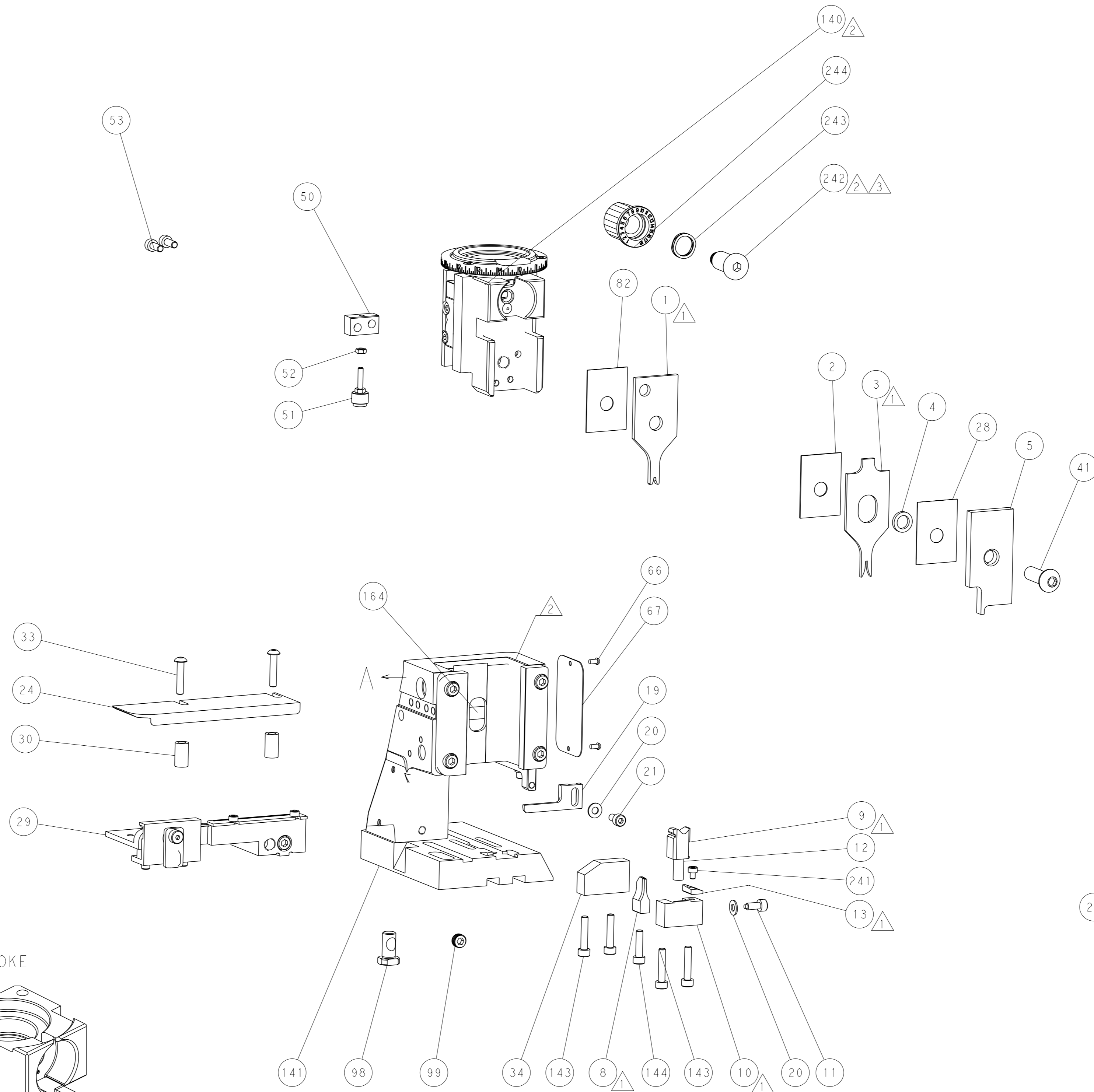
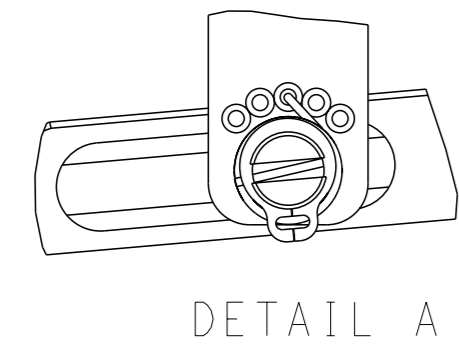
# FEED TYPE MECHANICAL



## PNEUMATIC



### FEED SPRING SETTING POSITION (SHOWN FROM REAR SIDE)



**PACIFIC VERSION**  
 Shown on sheets 3 of 4 & 4 of 4  
 (Atlantic version shown on sheets 1 of 4 & 2 of 4)

|  |  |  |   |                  |
|--|--|--|---|------------------|
| <small>THIS DRAWING IS A CONTROLLED DOCUMENT FOR TYCO ELECTRONICS CORPORATION. IT IS SUBJECT TO CHANGE AND THE CONTROLLING ENGINEERING ORGANIZATION SHOULD BE CONTACTED FOR THE LATEST REVISION.</small> |  | DWN: H. HUANG 28FEB2015<br>CHK: L. ZHANG 28FEB2015<br>APVD: J. GUO 28FEB2015 | NAME: Ocean Side Feed Applicator<br>SIZE: A1<br>CAGE CODE: 00779<br>DRAWING NO: C=2151423 | RESTRICTED TO: B |
| DIMENSIONS: mm<br>TOLERANCES UNLESS OTHERWISE SPECIFIED:<br>0 PLC ±<br>1 PLC ±<br>2 PLC ±<br>3 PLC ±<br>4 PLC ±<br>ANGLES FINISH ±   | WEIGHT: -<br>SCALE: 1:2<br>SHEET: 4 of 4<br>REV: B | Customer Accessible Production Drawing                                       |   |                  |