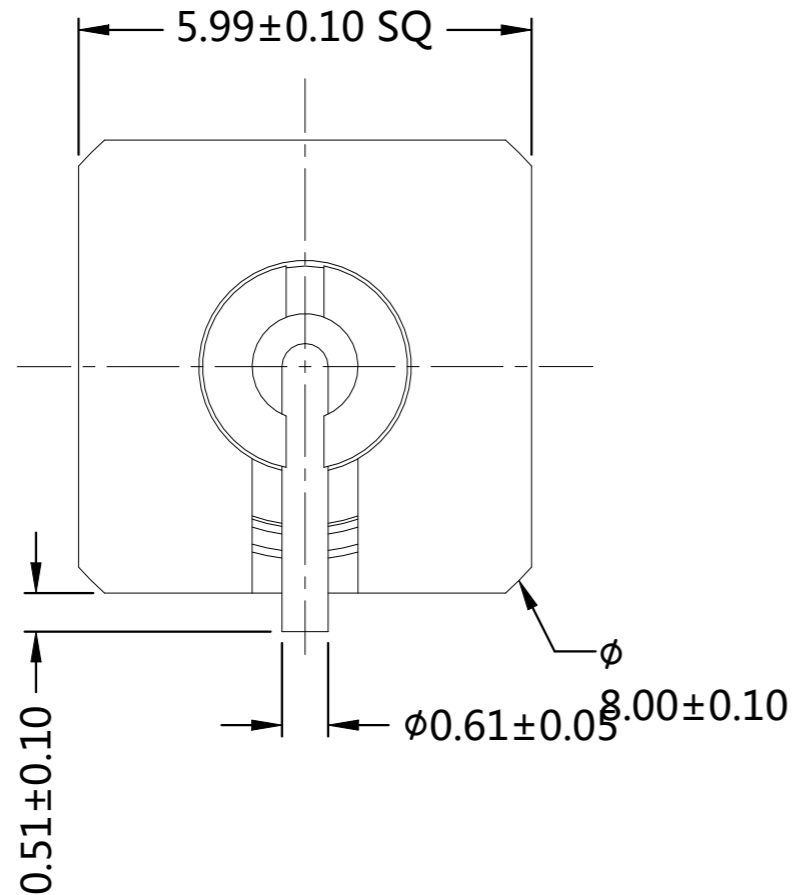
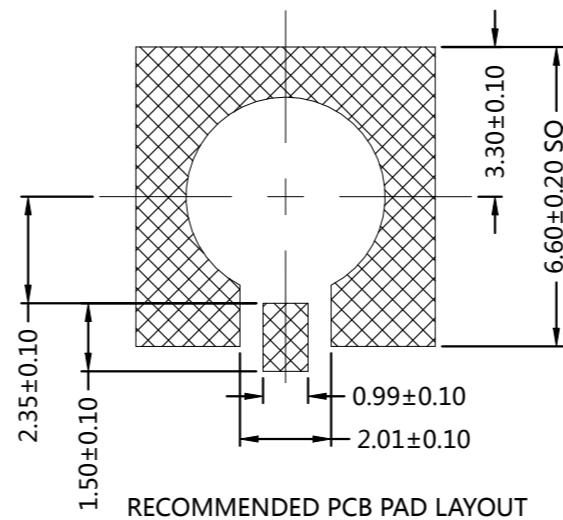
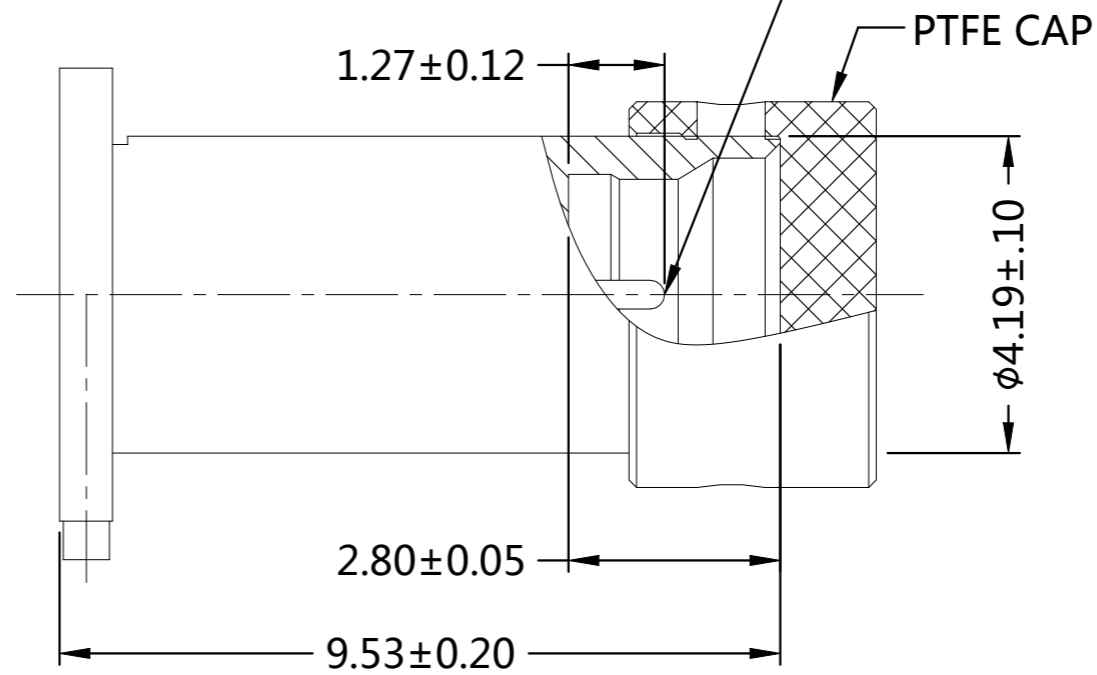


P	LTR	DESCRIPTION	DATE	DWN	APVD
A		REVISED PER ECN-22-147532	06APR2022	RZ	WK



SMP LIMITED DETENT INTERFACE



QTY	DESCRIPTION	MATERIAL	ITEM
1	CAP	PTFE	4
1	BODY	Au30u" BRASS	3
1	INSULATION	PEEK	2
1	CENTER CONTACT	Au30u" BeCu	1
-1	DESCRIPTION	PLATING MATERIAL	

QUANTITY PER ASSY

PARTS LIST

ELECTRICAL	MECHANICAL	ENVIRONMENTAL
Impedance (Ohm) <u>50</u> Frequency Range (GHz) <u>DC to 18GHz</u> Voltage Rating (Peak) <u>175 V RMS</u> @ Sea Level Insulation Resistance (MIN.) <u>5000 M ohms</u> Contact Resistance (Milliohms MAX) Center Contact <u>6.0</u> Outer Contact <u>2.0</u> Dielectric Withstand Voltage: <u>500 V RMS Max</u> Insertion Loss : <u>0.1*SQRT(F) dB</u> VSWR: <u>1.1 max DC ~ 6 GHz</u> <u>1.2 max 6 ~ 12 GHz</u> <u>1.3 max 12 ~ 18 GHz</u> RF leakage: <u>N/A</u>	Interface Dimension MIL-STD-348B Fig. <u>326-3</u> Force to Engage (lbs) Full Detent 15.0 Max Limited Detent 10.0 Max Smooth Bore 2.0 Max Force to Disengage (lbs) Full Detent 5.0 Max Limited Detent 2.0 Max Smooth Bore 0.5 Max Center Contact Captivation Axial (Lbs) <u>1.5</u> Radial (In/Oz) <u>N/A</u> Cable Retention Axial (Lbs) <u>N/A</u> Mating cycles <u>500</u> cycles	TEMPERATURE RANGE <u>-65°C TO + 165°C</u> THERMAL SHOCK <u>MIL-STD-202, METH.107, COND.B</u> CORROSION <u>MIL-STD-202, METH.101, COND.B</u> VIBRATION <u>MIL-STD-202, METH.204, COND.D</u> SHOCK <u>MIL-STD-202, METH.213, COND.I</u> MOISTURE RESISTANCE <u>MIL-STD-202, METH.106,</u> ROHS <u>COMPLIANT</u>

THIS DRAWING IS A CONTROLLED DOCUMENT.

DWN	RANDY Z	16FEB2022
CHK	ERIC D	16FEB2022
APVD	WENKE H	16FEB2022

NAME: SMP LD PLUG RA FOR PCB MOUNT

SIZE	CAGE CODE	DRAWING NO	RESTRICTED TO
A3	00779	C-2406830	

CUSTOMER DRAWING

SCALE: 1:1

SHEET: 1 OF 1

REV: A