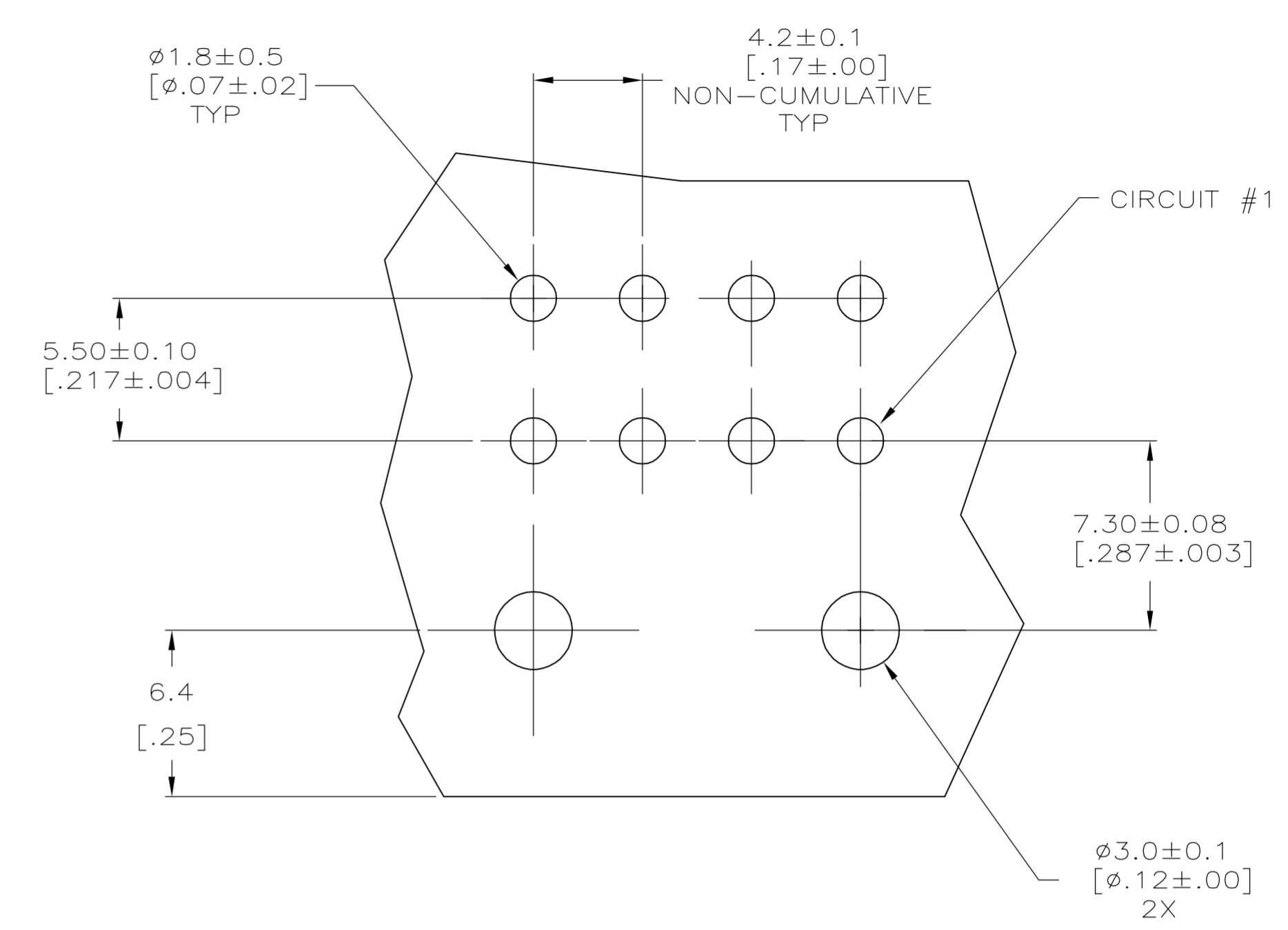
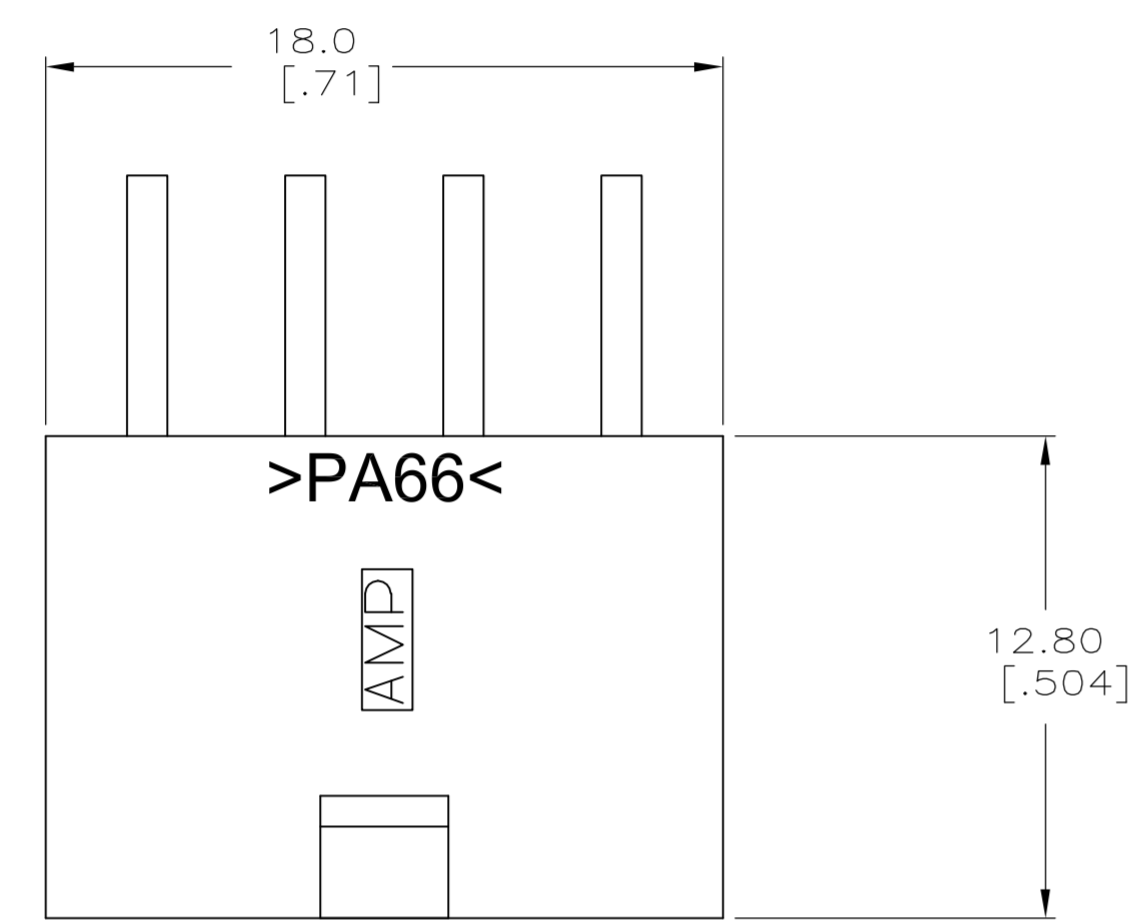
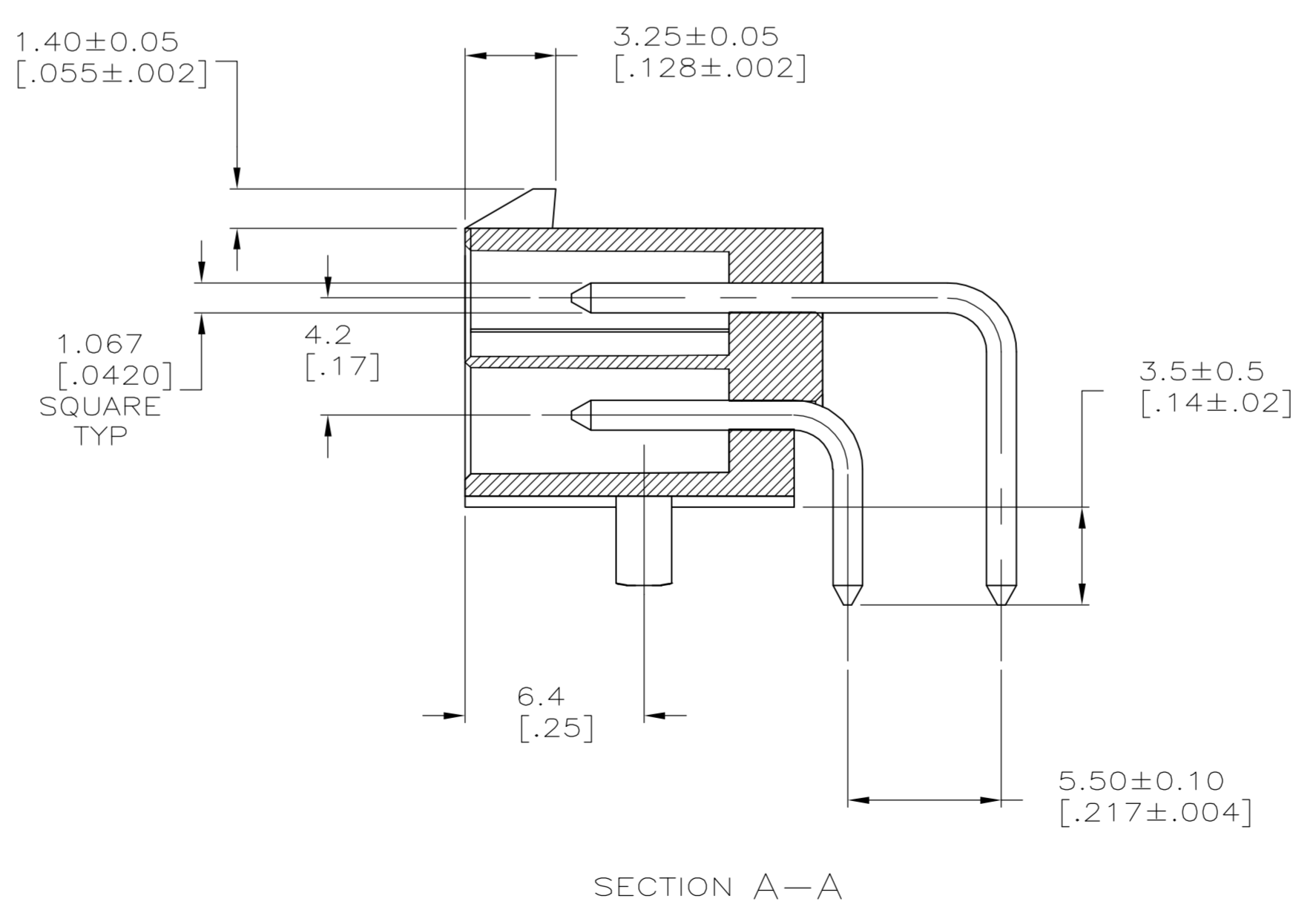
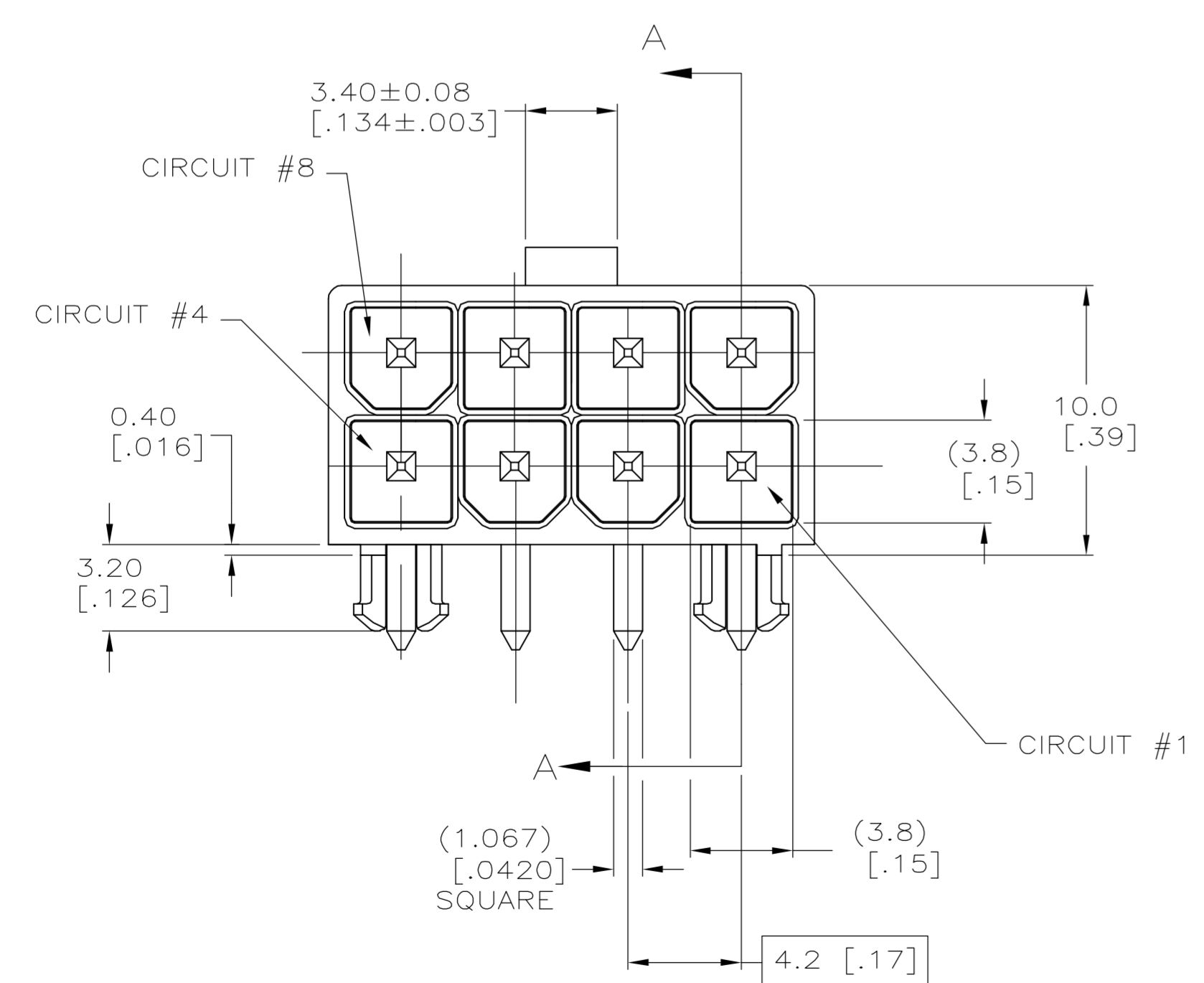


- 1 MATERIAL: HOUSING - NYLON, UL94V-2 (COLOR - NATURAL).  
PIN - 1.067mm<sup>2</sup> [.0017in<sup>2</sup>] COPPER ALLOY.
- 2 PINS TO COMPLY WITH SOLDERABILITY SPEC 109-11-3.
- 3 0.00381 [.000150] MINIMUM TIN LEAD OVER 0.00127 [.000050] MINIMUM NICKEL, ENTIRE LENGTH OF PIN.
- 4 NOTE DELETED.
- 5 0.00381 [.000150] MINIMUM TIN OVER 0.00127 [.000050] MINIMUM NICKEL, ENTIRE LENGTH OF PIN.



RECOMMENDED MOUNTING HOLE PATTERN FOR 1.78 [.070] MAX THICK P.C. BOARD COMPONENT SIDE SHOWN



SUPERSEDED BY 1-794509-1

1	5	1	1	1-794509-1
1	3	1	1	794509-1
MATERIAL		FINISH		ASSEMBLY
PIN		HOUSING		

**METRIC**

THIS DRAWING IS A CONTROLLED DOCUMENT.

DIMENSIONS: mm [INCHES]	TOLERANCES UNLESS OTHERWISE SPECIFIED:	DWN S. HOOVER 02-MAR-2005	APVD D. COLEY 02-MAR-2005	NAME D. COLEY 02-MAR-2005	Tyco Electronics Corporation Harrisburg, Pa 17105-3608
0 PLC ± .2 [0.1]	1 PLC ± .13 [.005]	PRODUCT SPEC 108-1646		ASSEMBLY, HEADER, RIGHT ANGLE, 8 POSITION, W/PEGS, 94V-2, AMP-DUAC (TM) POWER CONNECTOR	
2 PLC ± .13 [.005]	3 PLC ± .13 [.005]	APPLICATION SPEC 114-6067		SIZE A1	CAGE CODE DRAWING NO 00779
4 PLC ± .13 [.005]	ANGLES ± 30°	WEIGHT		CUSTOMER DRAWING	
MATERIAL SEE CHART		FINISH SEE CHART		SCALE 5:1	SHEET 1 OF 1 REV D