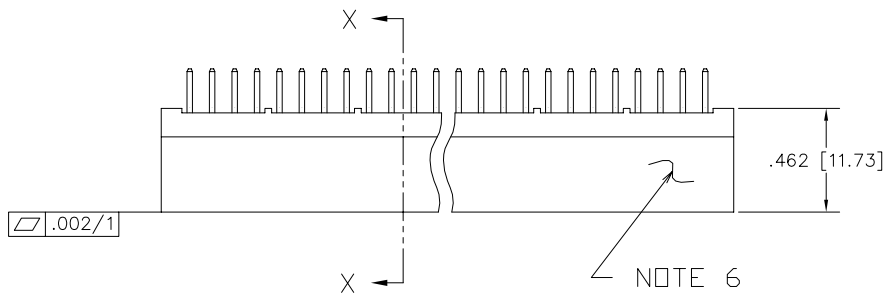
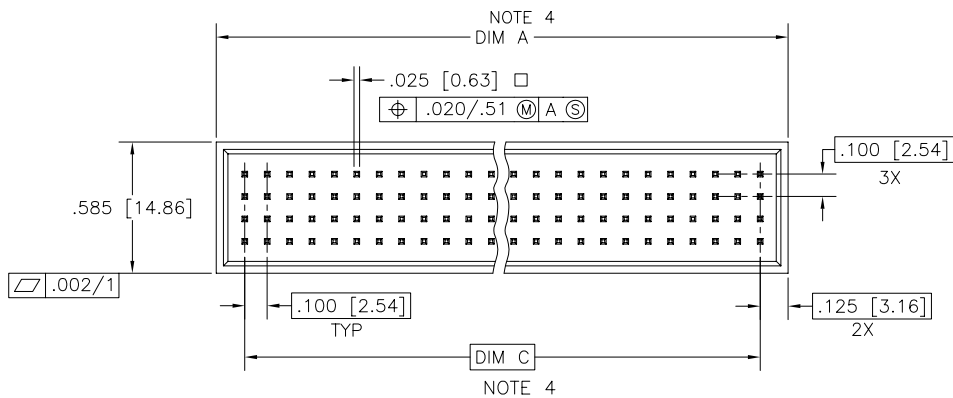


PRODUCT NUMBER
SEE SHEET 2

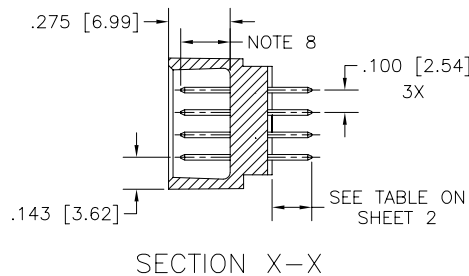


NOTE 6



NOTE 4
DIM A

NOTE 4
DIM C



SECTION X-X

FCI
FCIconnect.com

Copyright FCI

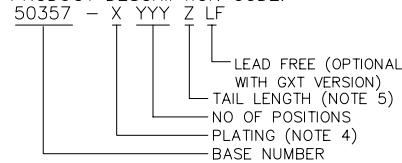
mat'l. code				surface ISO 1302 ✓		tolerance ISO 406 ISO 1101		projection INCH/MM		product family HPC	
tolerances unless otherwise specified				angles		linear		scale 1:1		title	
ltr	ecn no	dr	date			.xx±.01/.3		INCH/MM		4 ROW VERTICAL HEADER	
C	V20809	MRC	4/7/92			.xxx±.005/.13				CARD CONN. STYLE SOLDER TAILS PINS	
D	V20363	JM	2/21/93			.xxxx±.0020/.051				dwg no sheet 1 of 2 size	
E	V90861	HTB	4/18/99	0°±2'						50357 A3	
F	V00278	JWS	2/4/00	dr	D.HORCHLER	7/5/05				type Product Customer Drawing	
G	V05-0632	DCH	7/5/05	engr	D.HORCHLER	7/5/05					
H	V05-1039	DAI	11/15/05	chr	T.BREWBAKER	7/5/05					
J	M06-0260	MHT	7/07/06	appd	D.HORCHLER	7/5/05					
sheet index	revision	J	J								
sheet	sheet	1	2								

PRODUCT NUMBER	NUMBER OF POSITIONS	TAIL LENGTH ±.015/0.38	CONTACT AREA PLATING
50357-1YYYY	YYY, NOTES 1, 2	.177/4.49	30u"/.76u GOLD
50357-3YYYY	YYY, NOTES 1, 2	.177/4.49	50u"/1.27u GOLD
50357-5YYYY	YYY, NOTES 1, 2	.177/4.49	30u"/.76u GXT
50357-5YYYYALF	YYY, NOTES 1, 2	.177/4.49	30u"/.76u GXT
50357-1YYYYJ	YYY, NOTES 1, 2	.120/3.05	30u"/.76u GOLD
50357-3YYYYJ	YYY, NOTES 1, 2	.120/3.05	50u"/1.27u GOLD
50357-5YYYYJ	YYY, NOTES 1, 2	.120/3.05	30u"/.76u GXT
50357-5YYYYJLF	YYY, NOTES 1, 2	.120/3.05	30u"/.76u GXT
50357-1YYYYC	YYY, NOTES 1, 2	.533/13.54	30u"/.76u GOLD
50357-3YYYYC	YYY, NOTES 1, 2	.533/13.54	50u"/1.27u GOLD
50357-5YYYYC	YYY, NOTES 1, 2	.533/13.54	30u"/.76u GXT
50357-5YYYYCLF	YYY, NOTES 1, 2	.533/13.54	30u"/.76u GXT
50357-1YYYYD	YYY, NOTES 1, 2	.733/18.62	30u"/.76u GOLD
50357-3YYYYD	YYY, NOTES 1, 2	.733/18.62	50u"/1.27u GOLD
50357-5YYYYD	YYY, NOTES 1, 2	.733/18.62	30u"/.76u GXT
50357-5YYYYDLF	YYY, NOTES 1, 2	.733/18.62	30u"/.76u GXT
50357-1YYYYG	YYY, NOTES 1, 2	.250/6.35	30u"/.76u GOLD
50357-3YYYYG	YYY, NOTES 1, 2	.250/6.35	50u"/1.27u GOLD
50357-5YYYYG	YYY, NOTES 1, 2	.250/6.35	30u"/.76u GXT
50357-5YYYYGLF	YYY, NOTES 1, 2	.250/6.35	30u"/.76u GXT

NOTES:

1 THIS PRODUCT IS CONFIGURED IN SIZES OF 10 THRU 50 COLUMNS IN INCREMENTS OF ONE.
IE: 10,11,12,13,.....49,50.

2 PRODUCT DESCRIPTION CODE:



3 HOUSING MAT'L: GLASS AND MINERAL FILLED HIGH TEMP. THERMOPLASTIC. FLAME RETARDANT PER UL94V-0. COLOR: BLACK.
PIN MAT'L: PHOS BRONZE

4 DISTANCE CALCULATIONS:
DIMENSION "A" = .100/2.54 X NO. OF COLUMNS + .15/3.8.
DIMENSION "C" = .100/2.54 X NO. OF COLUMNS - .100/2.54.

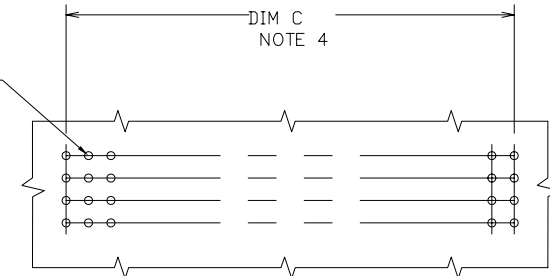
5. XXXXX-XXXXXLF PRODUCT MEETS EUROPEAN UNION DIRECTIVES AND OTHER COUNTRY REGULATIONS AS DESCRIBED IN GS-22-008.

6 MANUFACTURER'S NAME AND P/N, AND LOT CODE TO APPEAR ON THIS SURFACE PER BUS-12-108.

7 FOR PRODUCT PERFORMANCE SEE PRODUCT SPECIFICATION NUMBER BUS-12-090.

8 STANDARD MATING LENGTH IS .22/5.6. OTHER COMMON LENGTHS AVAILABLE ARE .18/4.6 AND .26/6.6. FIRST-MATE/LAST-BREAK APPLICATIONS CAN BE DEVELOPED BY SELECTIVELY LOADING THESE VARYING MATING LENGTHS - SEE DRAWING P/N 50145. CUSTOMER MATING LENGTHS ARE AVAILABLE. CONTACT YOUR CUSTOMER SERVICE REPRESENTATIVE FOR INFORMATION.

9. THE HOUSING WILL WITHSTAND EXPOSURE TO 260° C PEAK TEMPERATURE FOR 30 SECONDS IN A WAVE SOLDER APPLICATION.



RECOMMENDED PCB LAYOUT
ALL HOLES LOCATED ON .100/2.54 GRID UNLESS OTHERWISE SPECIFIED

mat'l. code		surface ISO 1302 ✓		tolerance ISO 406 ISO 1101		projection ⊕		product family HPC	
ltr	ecn	no	dr	date		tolerances unless otherwise specified		title	
J						.XX±.01/.3		4 ROW VERTICAL HEADER	
				angles		linear .xxx±.005/.13		CARD CONN. STYLE SOLDER TAILS PINS	
				0°±2'		.xxxx±.0020/.05		scale 1:1	
			dr	D.HORCHLER		7/5/05		dwg no	
			enr	D.HORCHLER		7/5/05		sheet 2 of 2 size	
			chr	T.BREWBAKER		7/5/05		50357 A3	
			appd	D.HORCHLER		7/5/05		type Product Customer Drawing	
sheet index	revision sheet								