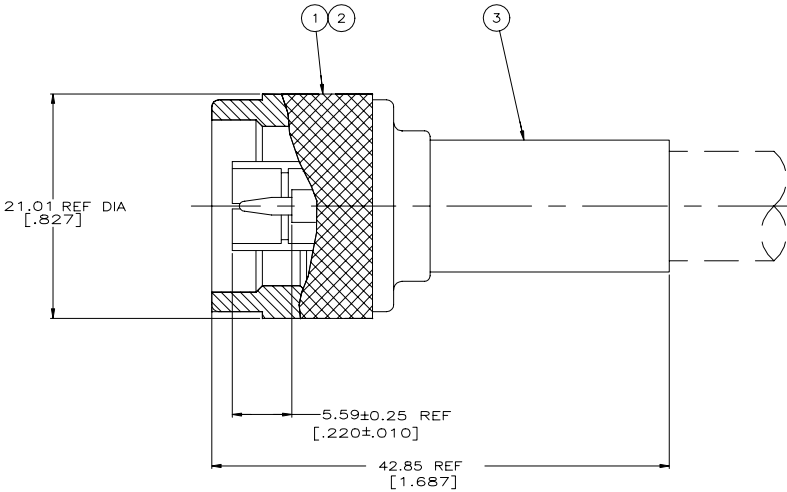
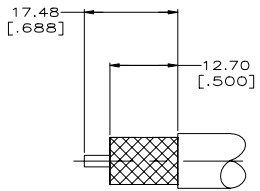


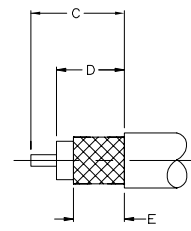
| REVISIONS | | | |
|-----------|---------------------------|-----------|-------|
| P LTR | DESCRIPTION | DATE | BY |
| K4 | REVISED PER ECR-21-103273 | 13MAY2021 | RZ WK |



- 1. SEE I.S. 2028-1
- △ SEE SEPERATE RESTRICTED CUSTOMER DRAWING
- △ SAME AS 1-225661-8 EXCEPT PACKAGE 10 PER BOX
- △ OBSOLETE PARTS: OBSOLETE CIS STREAMLINING PER D.RENAUD/D.SINISI



DETAIL A
SCALE 2:1



DETAIL B
SCALE 2:1

RECOMMENDED STRIP LENGTH

| | CABLE | CRIMPING TOOL | E | D | C | DETAIL | ③ FERRULE QTY=1 | ② CONTACT QTY=1 | ① PLUG ASSY QTY=1 | PART NUMBER |
|---------------------|-----------------------------------|---------------|-------------|--------------|--------------|--------|--------------------|--------------------|----------------------|-------------|
| △ OBSOLETE | RG-58A/U & 58C/U | 220045-2 | 8.71 [.343] | 10.31 [.406] | 15.09 [.594] | B | 9-225381-0 | 225343-2 | 225342-3 | 9-225661-2 |
| △ OBSOLETE | RG-213/U | 220015-1 | 9.53 [.375] | 12.70 [.500] | 17.45 [.687] | B | 9-51713-0 | 2-51695-1 | 51701-6 | 9-225661-1 |
| △ OBSOLETE | RG-9/U & 214/U | 220015-1 | - | - | - | A | 9-51713-0 | 2-51695-1 | 51701-6 | 9-225661-0 |
| △ SUPERSEDED | - | - | - | - | - | - | - | - | - | 1-225661-9 |
| △ OBSOLETE | - | - | - | - | - | - | - | - | - | 1-225661-8 |
| △ SUPERSEDED | BELDEN 8214 | 220015-1 | 9.53 [.375] | 12.70 [.500] | 17.45 [.687] | B | 9-51713-0 | 1-51695-2 | 51701-6 | 1-225661-6 |
| △ OBSOLETE | RG-142/U,142A/U, & 142B/U | 220045-2 | 8.71 [.343] | 10.31 [.406] | 15.09 [.594] | B | 225382-3 | 225343-4 | 225342-3 | 1-225661-5 |
| SUPSD BY 1-225662-4 | RG-141/U,141A/U & BELDEN YR-20621 | 220045-2 | 8.71 [.343] | 10.31 [.406] | 15.09 [.594] | B | 225381-3 | 225343-4 | 225342-3 | 1-225661-4 |
| △ SUPERSEDED | RG-55A & 223 | 220045-2 | 8.71 [.343] | 10.31 [.406] | 15.09 [.594] | B | 9-225382-0 | 225343-2 | 225342-3 | 1-225661-3 |
| △ OBSOLETE | RG-58A/U & 58C/U | 220045-2 | 8.71 [.343] | 10.31 [.406] | 15.09 [.594] | B | 9-225381-0 | 225343-2 | 225342-3 | 1-225661-2 |
| △ OBSOLETE | RG-115A/U | 220015-1 | - | - | - | A | 51713-9 | 2-51695-1 | 51701-7 | 1-225661-0 |
| △ OBSOLETE | RG-216/U | 220015-1 | - | - | - | A | 51713-9 | 2-51695-2 | 51701-6 | 225661-5 |
| △ OBSOLETE | RG-213/U | 220015-1 | 9.53 [.375] | 12.70 [.500] | 17.45 [.687] | B | 9-51713-0 | 2-51695-1 | 51701-6 | 225661-2 |
| △ OBSOLETE | RG-9/U & 214/U | 220015-1 | - | - | - | A | 9-51713-0 | 2-51695-1 | 51701-6 | 225661-1 |

THIS DRAWING IS A CONTROLLED DOCUMENT. DWG: 9-24-90, CHK: FRITZ, 2-28-91, DESIGNED BY: R. SENEZ, 2-28-91, APPROVED BY: R. HENRY, 2-28-91, PRODUCT SPEC: -

PLUG, SERIES N

APPLICATOR SPEC: -
MATERIAL: -
WEIGHT: 0.000000
CUSTOMER DRAWING

SIZE: A1
CAGE CODE: 00779
DRAWING NO: 225661
SCALE: 4:1
SHEET: 1 OF 1
REV: K4