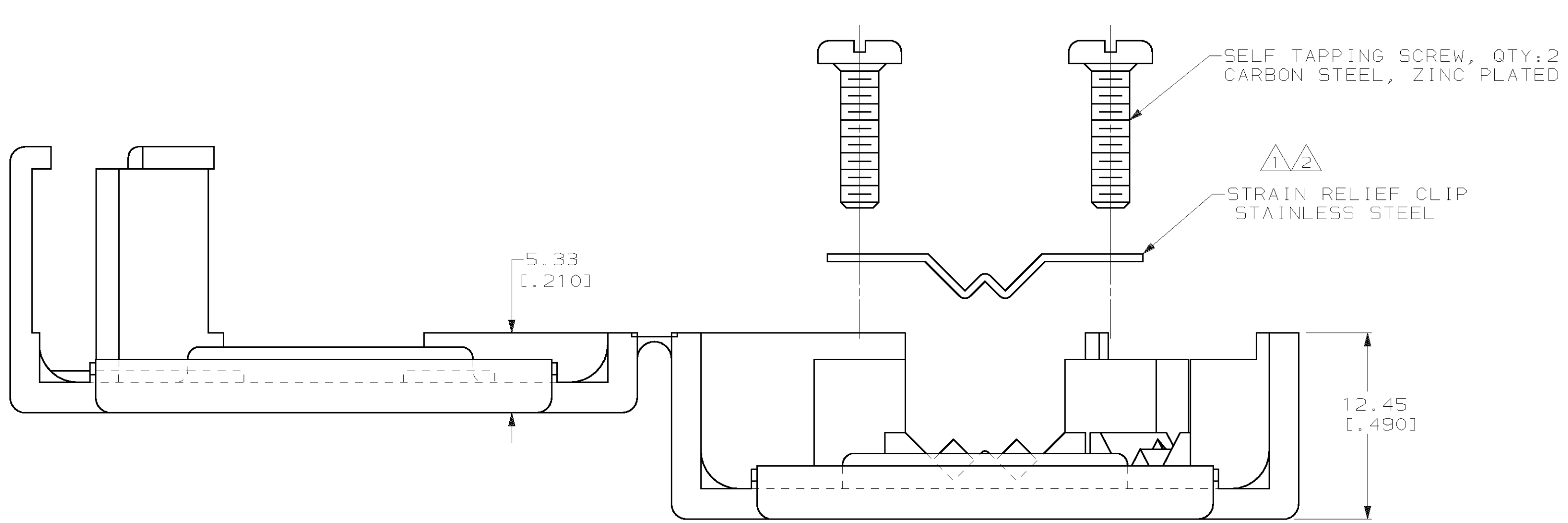
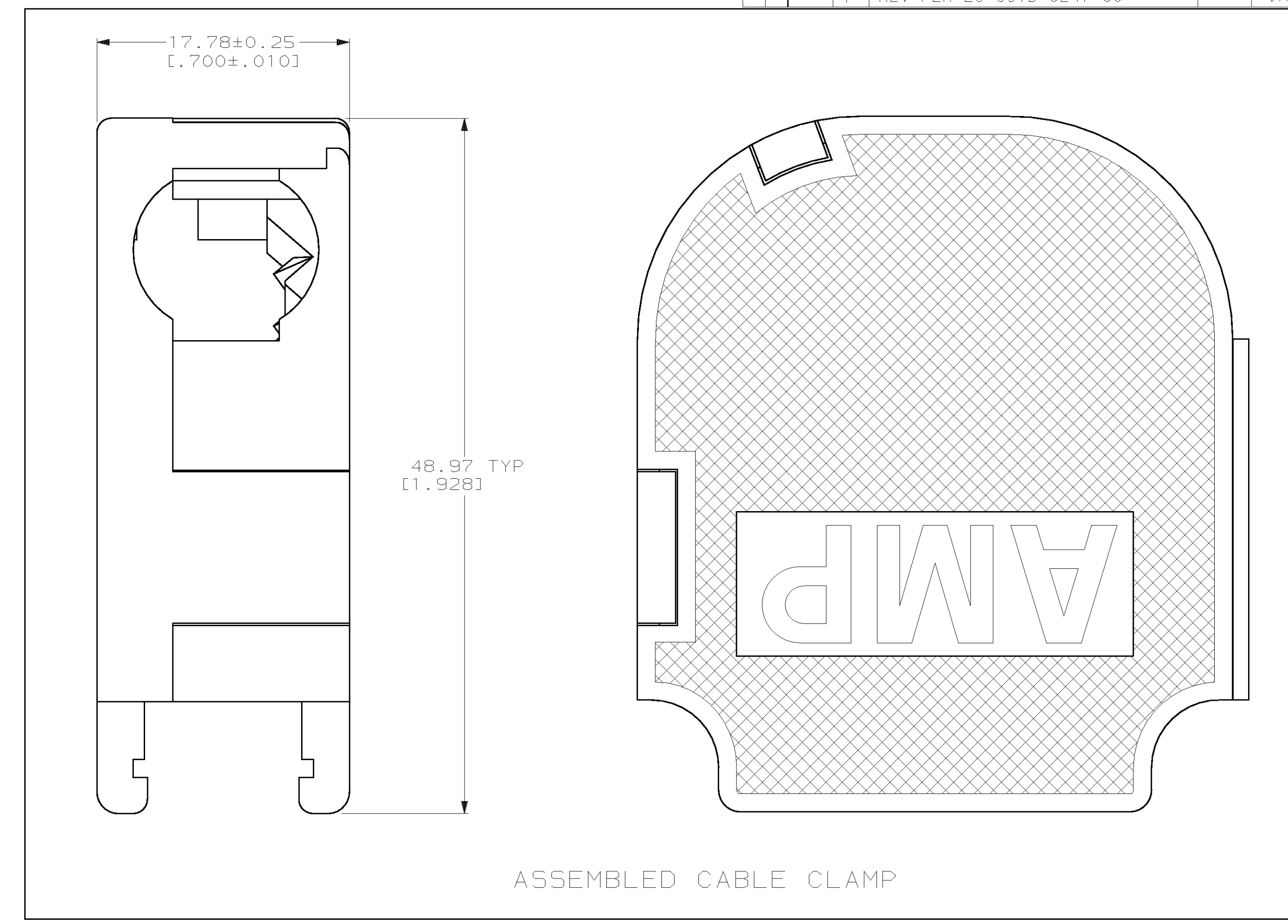
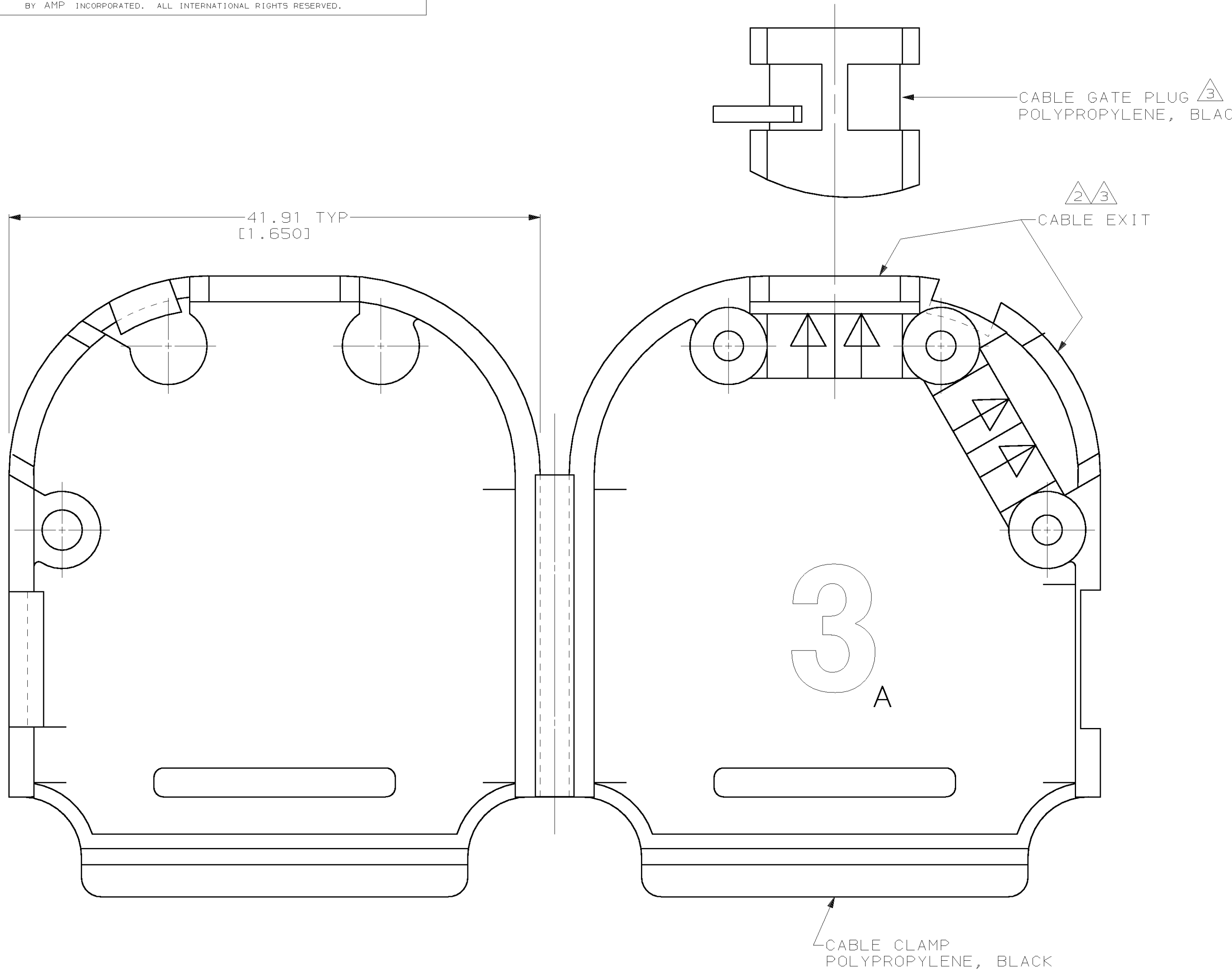


LOC		DIST		P		F		ZONE		LTR		REVISIONS			
GP	00											DESCRIPTION	DATE	APPD	
												O	RELEASED NPR2706	2-11-90	-
												A	REV PER ECN BD4220	07/30/90	JW
												B	REV PER ECN BD4313	10/03/90	JW
												C	REVISED PER ECN BD5892	02/26/92	RM
												D	REV PER ECN BD5736	08/26/92	RM
												E	REV PER EC 0020-1343-93	11/17/93	SB
												F	REV PER EC 001D-0247-00	16 JAN 02	JR



- 1 CLIP CAN BE INSTALLED AS SHOWN FOR SMALL DIAMETER CABLE, OR REVERSED FOR LARGE DIAMETER CABLE.
- 2 CLIP MAY BE USED AT EITHER CABLE EXIT.
- 3 CABLE GATE PLUG TO BE PLACED IN CABLE EXIT NOT BEING USED.
- 4. CABLE DIAMETER RANGE = 4.57-11.68 [0.180-.460].

		OBSELETE	BULK PACKED	750078-2
			UNIT KIT	750078-1
			PACKAGING	PART NO
DO NOT SCALE PRINT. UNLESS SPECIFIED DIMENSIONS IN mm [INCHES] TOLERANCES ON:		DR 2-11-90 J McCLINTON	NAME	
2 PLC DEC ±		CHK 2-14-90 R. STONE	CABLE CLAMP KIT, UNASSEMBLED, SIZE 3,	
3 PLC DEC ±0.13[0.005]		APPD 2-16-90 J. WESTMAN	QUICK-SNAP, 120° & 180°	
ANGLES ±		APPD 2-16-90 J. ASSINI	CABLE EXIT, AMPLIMITE™	
MATERIAL		PRODUCT SPEC	SIZE	CAGE CODE
SEE CALLOUTS			D	00779
FINISH		APPLICATION SPEC	SCALE	DRAWING NO
SEE CALLOUTS			4:1	750078
		WEIGHT		SHEET
				1 OF 1