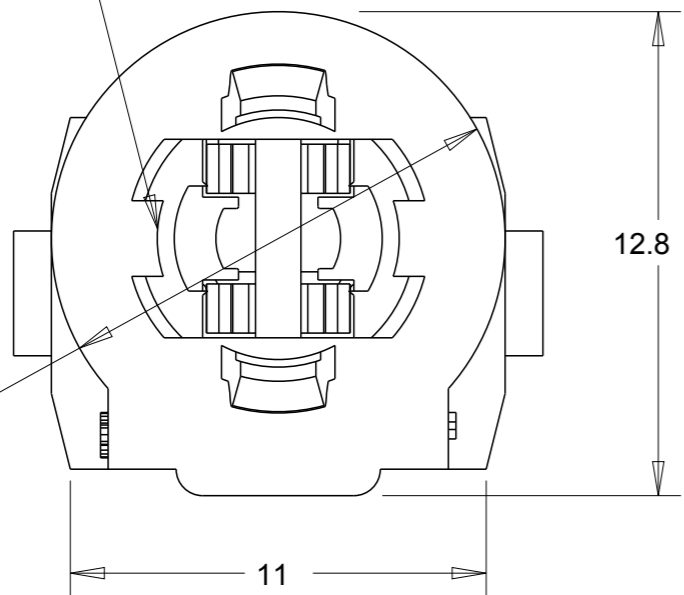
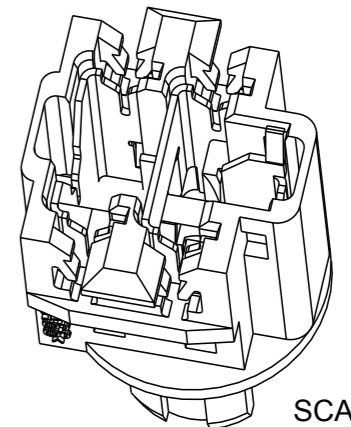
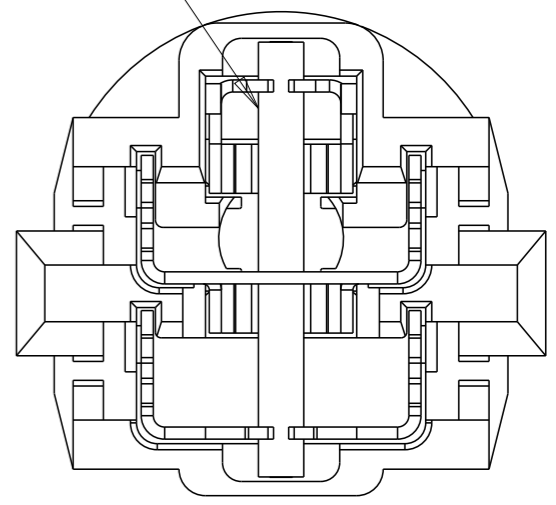
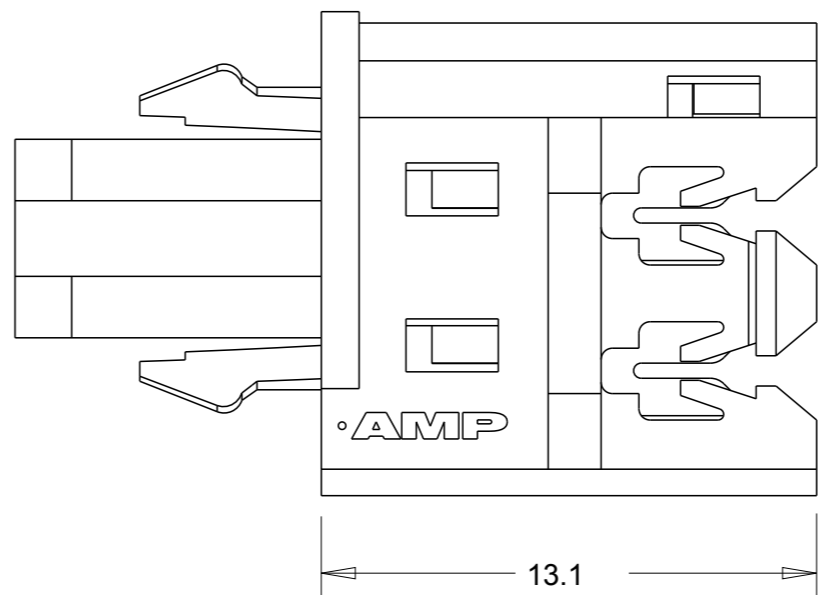


LOC	DIST	REVISIONS					
		P	LTR	DESCRIPTION	DATE	DWN	APVD
E	-		D	ECR-10-010252	24/05/10	MJG	JA

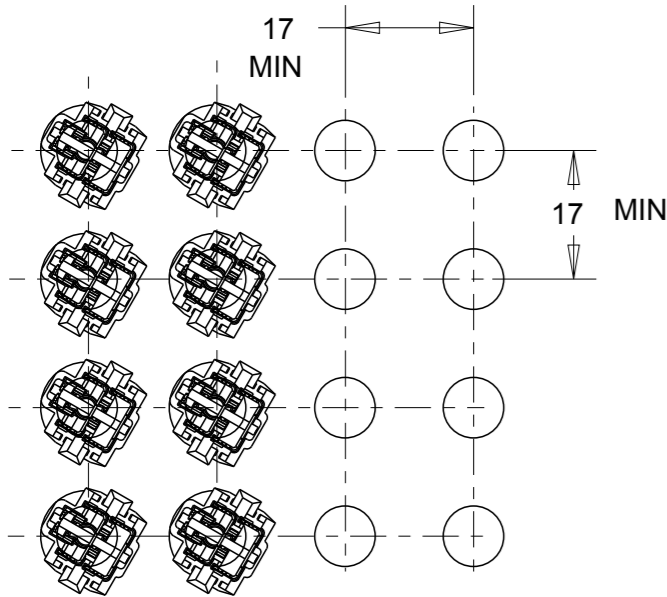
POLARIZING SLOT



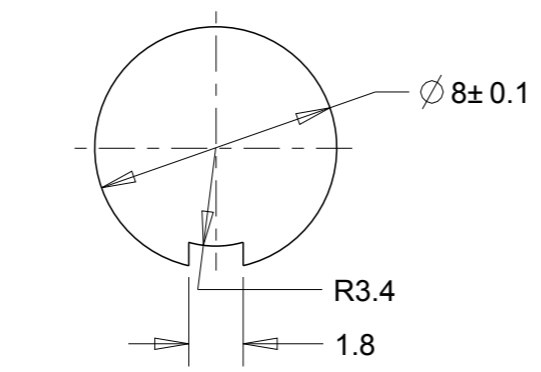
INSULATED SHORTING LINK



SCALE 3:1



RECOMMENDED MAXIMUM PANEL DENSITY FOR MANUAL WIRE INSERTION TOOLS. CONSULT AMP FOR PITCHING DIMENSIONS IF USING POWERED TOOLING. SCALE 1:1
 PANEL THICKNESS 1.5 TO 2.0



RECOMMENDED PANEL CUTOUT DIMS. (CUTOUT TAB MAY BE) (OMITTED IF POLARIZING) (IS NOT REQUIRED)

1 MATERIALS
 HOUSING :- NYLON 66
 CONTACTS :- BRASS

2 AMP PRODUCT SPEC No 108-3382.
 3 AMP APPLICATION SPEC No 114-3185.

BULBHOLDER WITHOUT BULB		NATURAL	349495-2
DESCRIPTION		HOUSING COLOUR	PART NUMBER
<small>THIS DRAWING IS A CONTROLLED DOCUMENT FOR AMP INCORPORATED. IT IS SUBJECT TO CHANGE AND THE CONTROLLING ENGINEERING ORGANIZATION SHOULD BE CONTACTED FOR THE LATEST REVISION.</small>		AMP AMP of Great Britain Ltd Terminal House, Stanmore, Middx. HA7 4RS.	
DIMENSIONS:	TOLERANCES UNLESS OTHERWISE SPECIFIED:	NAME	
mm	LINEAR 0.5	5mm IDC BULBHOLDER ASSEMBLY	
	0 PLC ± - 1 PLC ± - 2 PLC ± - 3 PLC ± - 4 PLC ± - ANGLES ± -	WITHOUT DIODE	
	MATERIAL	FINISH	
1	-	SIZE	CAGE CODE
		A3	00779
		DRAWING NO	
		C-349495	
		WEIGHT	
		CUSTOMER DRAWING	
		SCALE	SHEET
		5:1	1 OF 1
		REV	D