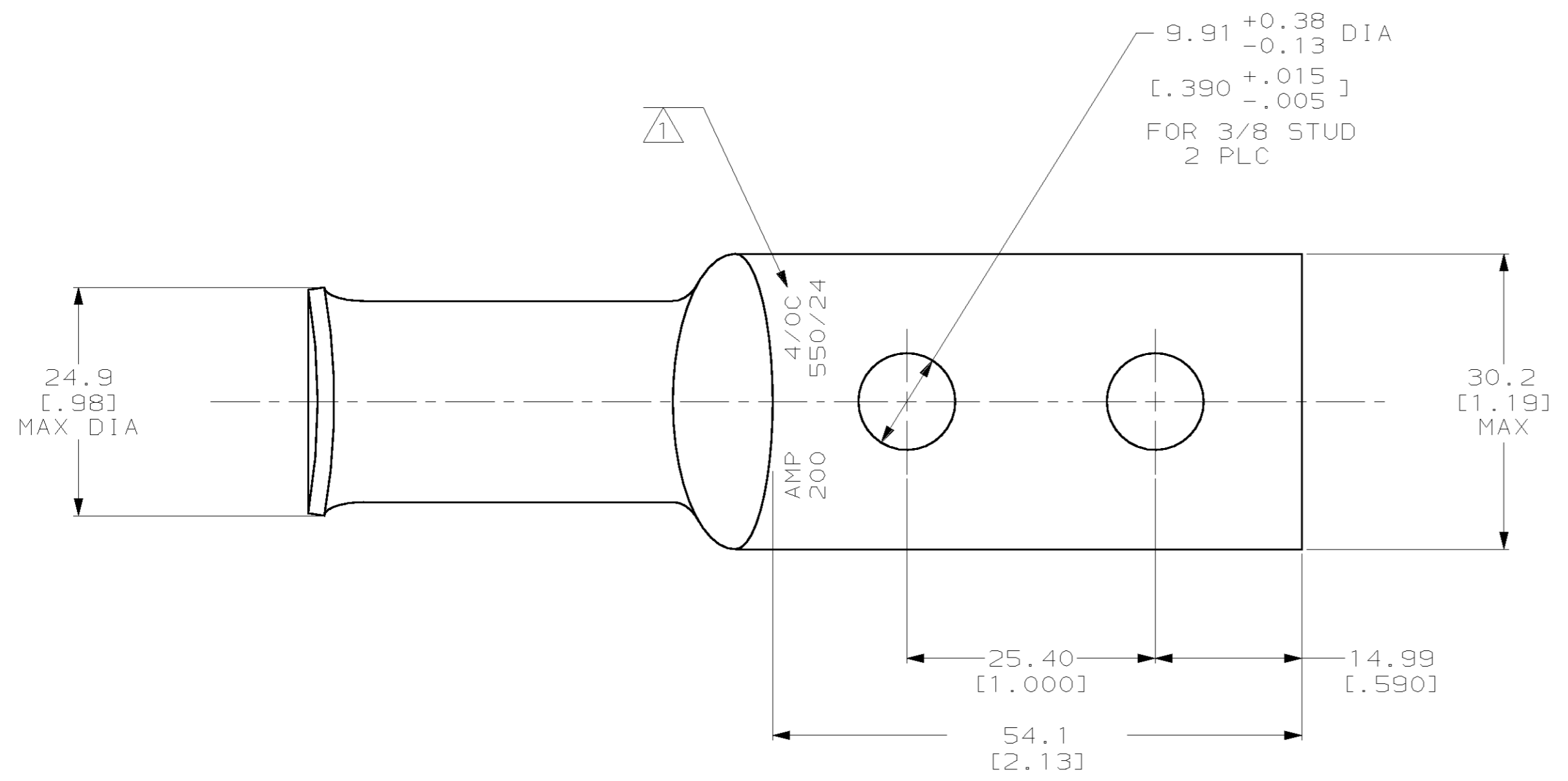
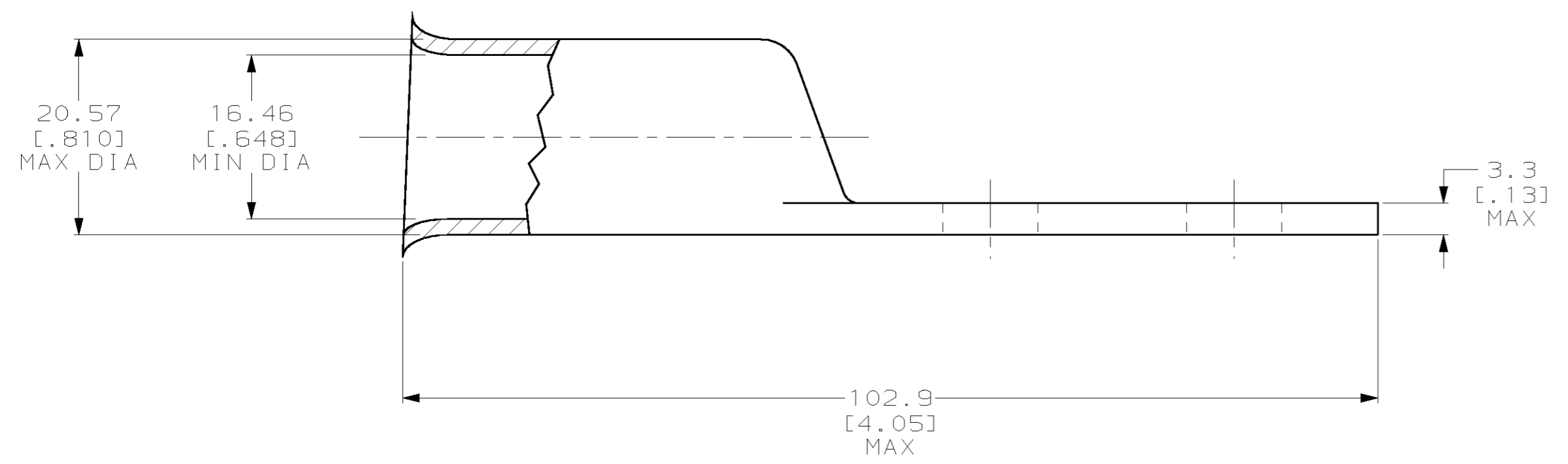


THIS DRAWING IS UNPUBLISHED. RELEASED FOR PUBLICATION
 (C) COPYRIGHT 19 BY AMP INCORPORATED. ALL RIGHTS RESERVED.

LOC		DIST		REVISIONS			
P	LTR	DESCRIPTION	DATE	DWN	APVD		
G	86	H	REV PER 063A-0637-01	030CT02	JR	MS	



△ STAMP AMP 4/0C 200 550/24 APPROX AS SHOWN



605685-1
 PART NUMBER

<small>THIS DRAWING IS A CONTROLLED DOCUMENT FOR AMP INCORPORATED. IT IS SUBJECT TO CHANGE AND THE CONTROLLING ENGINEERING ORGANIZATION SHOULD BE CONTACTED FOR THE LATEST REVISION.</small>		DWN DK SCHRUM 05FEB96 CHK WJ VOCKROTH 08FEB96 APVD JL MECKLEY 08FEB96	AMP AMP Incorporated Harrisburg, PA 17105-3608
DIMENSIONS: mm [INCHES]	TOLERANCES UNLESS OTHERWISE SPECIFIED: 0 PLC ±- 1 PLC ±- 2 PLC ±0.5 [.023] 3 PLC ±0.13 [.005] 4 PLC ±- ANGLES ±-	NAME PRODUCT SPEC APPLICATION SPEC	TERMINAL, LONG BARREL, AMPPOWER, WIRE SIZE: 4/0 AWG
MATERIAL COPPER PER ASTM B-75 ANNEALED	FINISH TIN PLATE 0.00381 [.0001503] MIN THK PER MIL-T-10727	WEIGHT -	SIZE CAGE CODE DRAWING NO A2 00779 C-605685
		CUSTOMER DRAWING	SCALE 2:1 SHEET 1 OF 1 REV H