

4

3

2

1


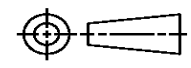
THIS DRAWING IS UNPUBLISHED. RELEASED FOR PUBLICATION  
© COPYRIGHT ALL RIGHTS RESERVED.

| LOC | DIST | REVISIONS     |           |     |      |
|-----|------|---------------|-----------|-----|------|
| P   | LTR  | DESCRIPTION   | DATE      | DWN | APVD |
|     | A1   | ECR-16-009822 | 14JUL2016 | GK  | SD   |
|     |      |               |           |     |      |
|     |      |               |           |     |      |

# REPLACED BY OCEAN STYLE APPLICATOR PART NUMBER 2266990-1

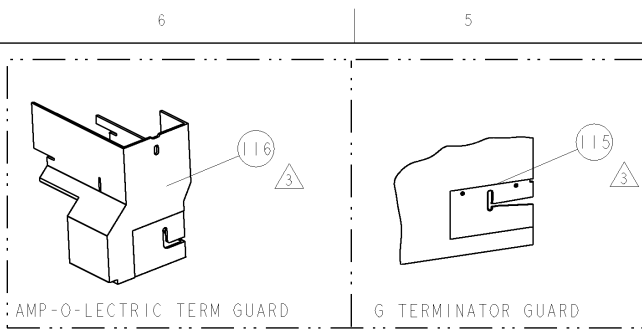
FOR REPLACEMENT PARTS FOR APPLICATOR 1852845 REFER TO ADDITIONAL PAGE(S). SPARE PARTS KIT (IF LISTED) WILL REMAIN AVAILABLE.

THE REPLACEMENT OCEAN STYLE APPLICATOR HAS THE SAME TERMINATOR/PRESS INTERFACE AS APPLICATOR 1852845

|   |  |  |                  |                          |   |                 |               |
|---|--|--|------------------|--------------------------|---|-----------------|---------------|
| THIS DRAWING IS A CONTROLLED DOCUMENT.  |  | DWN                                    | GOPALAKRISHNA HV |                          |  | TE Connectivity |               |
| DIMENSIONS:   |  | CHK                                    | GOPALAKRISHNA HV |                          |   | NAME            |               |
|  |  | TOLERANCES UNLESS OTHERWISE SPECIFIED: |                  | SIDE FEED HDM APPLICATOR |   |                 |               |
|   |  | 0 PLC                                  | ±                | APVD                     | STOUGH DALE   |                 |               |
| MATERIAL  |  | 1 PLC                                  | ±                | PRODUCT SPEC             | APPLICATION SPEC  |                 |               |
| FINISH  |  | 2 PLC                                  | ±                | SIZE                     | CAGE CODE   | DRAWING NO      | RESTRICTED TO |
|   |  | 3 PLC                                  | ±                | A3                       |   | ©- 1852845      |               |
|   |  | 4 PLC                                  | ±                | CUSTOMER DRAWING         |   | SCALE           | SHEET 1 OF 2  |
|   |  | ANGLES                                 | ±                |                          |   |                 | REV A1        |

| PART NUMBER | REV | FIRST USED | POWER UNIT    | FEED TYPE | DESCRIPTION        |
|-------------|-----|------------|---------------|-----------|--------------------|
| 1852845-1   | A   | 122500-1   | LEADMAKER     | POST FEED | CUTS CARRIER       |
| 1852845-2   | A   | 565435-5   | BENCH MODEL K | PRE FEED  | CUTS CARRIER       |
| 1852845-3   | A   | 354500-1   | BENCH MODEL G | PRE FEED  | CUTS CARRIER       |
| 1852845-6   | A   | 122500-1   | LEADMAKER     | POST FEED | CONTINUOUS CARRIER |
| 7-1852845-7 | A   | -          | -             | -         | SPARE PARTS        |

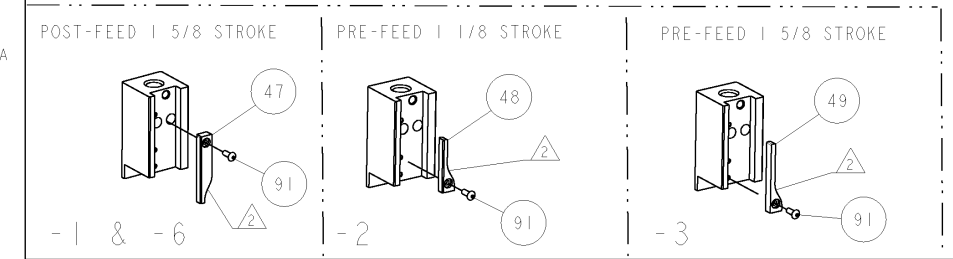
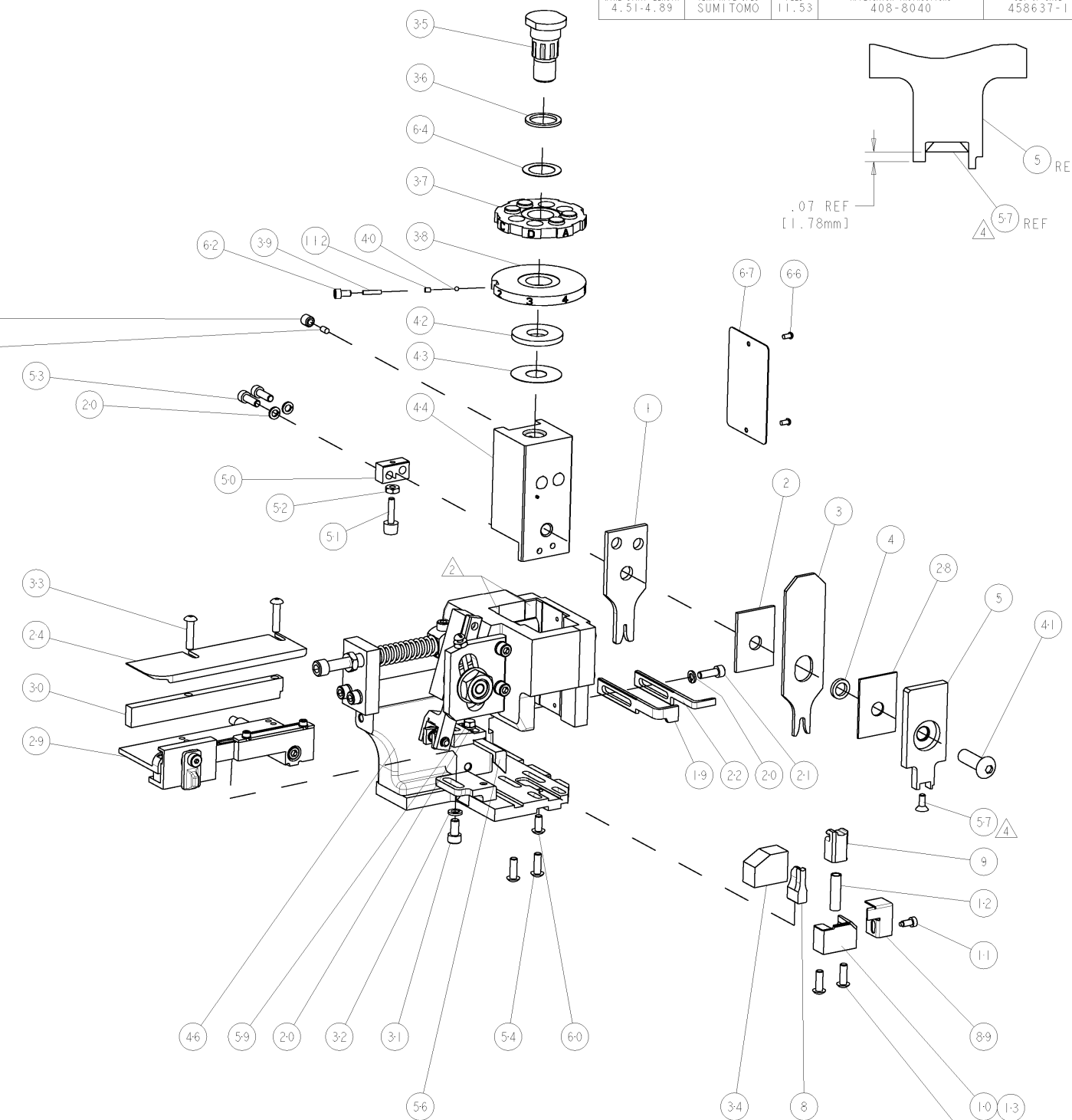
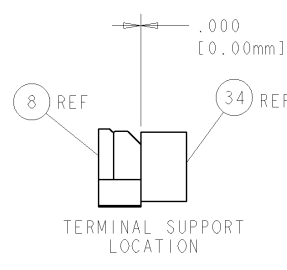
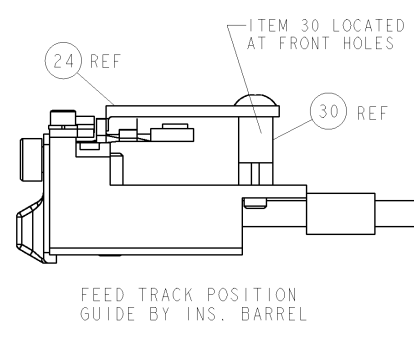
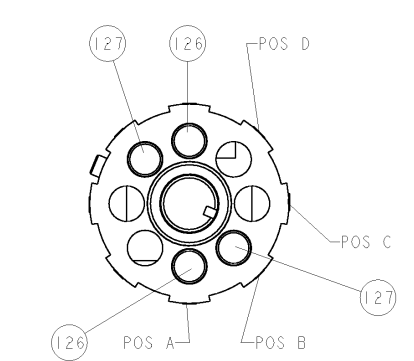
- △ RECOMMENDED SPARE PARTS
- △ GREASE LIGHTLY
- △ GUARD MUST BE IN PLACE WHEN OPERATING APPLICATOR IN A BENCH MACHINE
- △ APPLY TORO-SEAL IN ALLEN SOCKET TO FILL HOLE AFTER FLAT HD HAS BEEN ADJUSTED TO CORRECT HEIGHT AT QUALIFICATION. APPLY PN 1-23419-5 LOC-TITE TO THREADS.
- △ THE INSULATION RANGE LISTED IS FOR THE TERMINAL. THE INSULATION RANGE FOR THE SEAL IS Ø1.5-1.9mm



| TERMINAL NAME: TERMINAL |                | SUMITOMO TERM - SUMITOMO CRIMP SPECS |   |
|-------------------------|----------------|--------------------------------------|---|
| TE PN                   | SUMITOMO       | PAD LTR                              | CRIMP HEIGHT                                |
| 1949967                 | 8240-0263      | A                                    | 1.05mm ± .05 [- .05 [ .041 + .0027 - .002 ] |
| -                       | -              | B                                    | .95mm ± .05 [- .05 [ .037 + .0027 - .002 ]  |
| -                       | -              | C                                    | -   |
| -                       | -              | D                                    | -   |
| SEAL PN                 | -              | CRIMP                                | SIZE  |
| 1572860                 | 7165-0473      | WIRE                                 | 1.60mm [ .063 ]                             |
| -                       | -              | INSUL                                | 3.76mm [ .148 ]                             |
| WIRE STRIP LENGTH       | TERM APPL SPEC | FEED                                 | APPLICATOR INSTRUCTIONS                     |
| 4.51-4.89               | SUMITOMO       | 11.53                                | 408-8040                                    |
| -                       | -              | -                                    | SET UP GAGE                                 |
| -                       | -              | -                                    | 458637-1                                    |

| LOC | DIST | REVISIONS |             |           |        |
|-----|------|-----------|-------------|-----------|--------|
| A   | 66   | REV       | DESCRIPTION | DATE      | BY     |
|     |      | A         | RELEASED    | 12MAY2009 | MEH TE |

|   |   |     |     |   |   |             |                                       |     |
|---|---|-----|-----|---|---|-------------|---------------------------------------|-----|
| - | 2 | 2   | 2   | 2 | - | 3-354779-8  | PIN, WIRE DISC, .3180                 | 127 |
| - | 2 | 2   | 2   | 2 | - | 2-354779-7  | PIN, WIRE DISC, .3125                 | 126 |
| - | - | -   | REF | - | - | 455749-1    | GUARD WINDOW                          | 116 |
| - | - | REF | -   | - | - | 679532-1    | INSERT, GUARD                         | 115 |
| - | 1 | 1   | 1   | 1 | - | 690603-1    | SPRING ASSIST AMP-O-MATOR APPLICATOR  | 112 |
| - | 1 | 1   | 1   | 1 | - | 1-21002-7   | SCR, BTN SKT HD CAP 6-32 X .375       | 91  |
| - | 1 | 1   | 1   | 1 | - | 318563-1    | GUARD, FRONT CHIP                     | 89  |
| - | 1 | 1   | 1   | 1 | - | 4088040     | SF APPL INST 408-8040                 | 72  |
| - | 1 | 1   | 1   | 1 | - | 217238-1    | GENERAL INSTRUCTION PKG               | 71  |
| - | 1 | 1   | 1   | 1 | - | 461264-1    | PLATE, IDENTIFICATION                 | 67  |
| - | 2 | 2   | 2   | 2 | - | 21017-2     | SCREW, DRIVE                          | 66  |
| - | 1 | 1   | 1   | 1 | - | 986950-1    | WASHER, FLAT PRECISION                | 64  |
| - | 1 | 1   | 1   | 1 | - | 21009-2     | SCR, SET, SELF LOCKING 1/4-20 X .250  | 63  |
| - | 1 | 1   | 1   | 1 | - | 23030-1     | SCR, SKT HD CAP 6-32 X .25            | 62  |
| - | 1 | 1   | 1   | 1 | - | 22733-8     | SCR, BHSC, SELF-LOCKING, 8-32 X .375  | 60  |
| - | 1 | 1   | 1   | 1 | - | 2-22603-0   | SCR, HEX HD CAP 8-32 X .312           | 59  |
| - | 1 | 1   | 1   | 1 | - | 1-21003-9   | SCR, FLT SKT HD CAP 6-32 X .375       | 57  |
| - | 1 | 1   | 1   | 1 | - | 458537-2    | PAWL, FEED                            | 56  |
| - | 4 | 4   | 4   | 4 | - | 2-21002-2   | SCR, BTN SKT HD CAP 8-32 X .500       | 54  |
| - | 2 | 2   | 2   | 2 | - | 2-21000-7   | SCR, SKT HD CAP 8-32 X .500           | 53  |
| - | 1 | 1   | 1   | 1 | - | 21018-5     | NUT, HEX, REG 6-32                    | 52  |
| - | 1 | 1   | 1   | 1 | - | 811242-2    | BUMPER, HOLD DOWN                     | 51  |
| - | 1 | 1   | 1   | 1 | - | 690753-1    | SPACER, TONKER                        | 50  |
| - | - | -   | -   | - | - | 690602-6    | CAM, PRE FEED, 1 5/8                  | 49  |
| - | - | -   | -   | - | - | 690602-5    | CAM, PRE FEED, 1 1/8                  | 48  |
| - | 1 | 1   | 1   | 1 | - | 690501-4    | CAM, POST-FEED 1 5/8                  | 47  |
| - | 1 | 1   | 1   | 1 | - | 459456-1    | APPL. BASIC SUB ASSY (SIDE WISE MOCA) | 46  |
| - | 1 | 1   | 1   | 1 | - | 690191-1    | PLUG, NYLON                           | 45  |
| - | 1 | 1   | 1   | 1 | - | 455673-1    | RAM, SIDE FEED                        | 44  |
| - | 1 | 1   | 1   | 1 | - | 690125-1    | SHIM SUB-ASSY                         | 43  |
| - | 1 | 1   | 1   | 1 | - | 1-690124-4  | WASHER, RAM (.120)                    | 42  |
| - | 1 | 1   | 1   | 1 | - | 7-21002-9   | SCR, BTN SKT HD CAP 5/16-24 X 1.00    | 41  |
| - | 1 | 1   | 1   | 1 | - | 23241-6     | BALL, STEEL                           | 40  |
| - | 1 | 1   | 1   | 1 | - | 690170-1    | SPRING, COMPRESSION                   | 39  |
| - | 1 | 1   | 1   | 1 | - | 1-690142-0  | DISC, INSULATION                      | 38  |
| - | 1 | 1   | 1   | 1 | - | 354777-1    | WIRE DISC, ASSEMBLY                   | 37  |
| - | 1 | 1   | 1   | 1 | - | 22480-5     | SPRING, COMPRESSION                   | 36  |
| - | 1 | 1   | 1   | 1 | - | 690212-1    | POST, RAM                             | 35  |
| - | 1 | 1   | 1   | 1 | - | 690786-3    | TERMINAL SUPPORT                      | 34  |
| - | 2 | 2   | 2   | 2 | - | 2-21002-4   | SCR, BTN SKT HD CAP 8-32 X .750       | 33  |
| - | 1 | 1   | 1   | 1 | - | 21024-5     | WASHER, SPRG LOCK, REG NO 10          | 32  |
| - | 1 | 1   | 1   | 1 | - | 3-21000-4   | SCR, SKT HD CAP 10-32 X .375          | 31  |
| - | 1 | 1   | 1   | 1 | - | 1320908-1   | SPACER, STRIP GUIDE                   | 30  |
| - | 1 | 1   | 1   | 1 | - | 1633091-1   | ASSEMBLY, STRIP GUIDE                 | 29  |
| - | 1 | 1   | 1   | 1 | - | 1-455888-0  | SPACER, CRIMPER                       | 28  |
| - | 1 | 1   | 1   | 1 | - | 1320928-1   | PLATE, STRIP GUIDE                    | 24  |
| - | 1 | 1   | 1   | 1 | - | 690472-2    | STRIPPER                              | 22  |
| - | 1 | 1   | 1   | 1 | - | 2-21000-7   | SCR, SKT HD CAP 8-32 X .500           | 21  |
| - | 4 | 4   | 4   | 4 | - | 21024-4     | WASHER, SPRG LOCK, REG NO 8           | 20  |
| - | - | -   | -   | - | - | 691353-1    | STRIPPER                              | 19  |
| - | 1 | 1   | 1   | 1 | - | 679625-2    | SHEAR HOLDER, FRONT (NO CUT)          | 13  |
| - | 1 | 1   | 1   | 1 | - | 3-22280-3   | SPRING, COMPRESSION                   | 12  |
| - | 1 | 1   | 1   | 1 | - | 690461-2    | STOP, SHEAR                           | 11  |
| - | - | -   | -   | - | - | 1-690459-0  | SHEAR HOLDER, FRONT                   | 10  |
| - | 1 | 1   | 1   | 1 | - | 318707-1    | FLOATING SHEAR, FRONT                 | 9   |
| - | 1 | 1   | 1   | 1 | - | 2-1633330-4 | ANVIL, COMBINATION                    | 8   |
| - | - | -   | -   | - | - | -           | -                                     | 7   |
| - | - | -   | -   | - | - | -           | -                                     | 6   |
| - | 1 | 1   | 1   | 1 | - | 318701-1    | DEPRESSOR, SHEAR                      | 5   |
| - | 1 | 1   | 1   | 1 | - | 238011-8    | BLOCK, CRIMPER SPACER                 | 4   |
| - | 1 | 1   | 1   | 1 | - | 4-1633510-1 | CRIMPER, INSUL O                      | 3   |
| - | 1 | 1   | 1   | 1 | - | 1-455888-8  | SPACER, CRIMPER                       | 2   |
| - | 1 | 1   | 1   | 1 | - | 8-1673600-5 | CRIMPER, WIRE                         | 1   |



| DIMENSIONS:         |             | TOLERANCES UNLESS OTHERWISE SPECIFIED: |             | MATERIAL:           |               | FINISH:     |           |
|---------------------|-------------|--|-------------|---------------------|---------------|-------------|-----------|
| INCHES              | 0 PLC ± .01 | 1 PLC ± .01                            | 2 PLC ± .01 | 3 PLC ± .001        | 4 PLC ± .0001 | ANGLE       | ± .0001   |
| APPROVALS:          |             | APPROVALS:                             |             | APPROVALS:          |               | APPROVALS:  |           |
| DESIGNED BY         | M. HERR     | DESIGNED BY                            | M. HERR     | DESIGNED BY         | M. HERR       | DESIGNED BY | M. HERR   |
| CHECKED BY          | M. HERR     | CHECKED BY                             | M. HERR     | CHECKED BY          | M. HERR       | CHECKED BY  | M. HERR   |
| DATE                | 23APR2009   | DATE                                   | 23APR2009   | DATE                | 23APR2009     | DATE        | 23APR2009 |
| PART NO             |             |  |             | DESCRIPTION         |               |             |           |
| -77 -6 -3 -2 -1 U/M |             |  |             | -77 -6 -3 -2 -1 U/M |               |             |           |
| PART NO             |             |  |             | DESCRIPTION         |               |             |           |
| -77 -6 -3 -2 -1 U/M |             |  |             | -77 -6 -3 -2 -1 U/M |               |             |           |
| PART NO             |             |  |             | DESCRIPTION         |               |             |           |
| -77 -6 -3 -2 -1 U/M |             |  |             | -77 -6 -3 -2 -1 U/M |               |             |           |