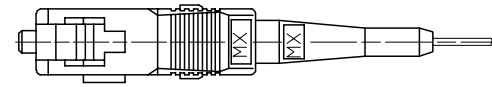
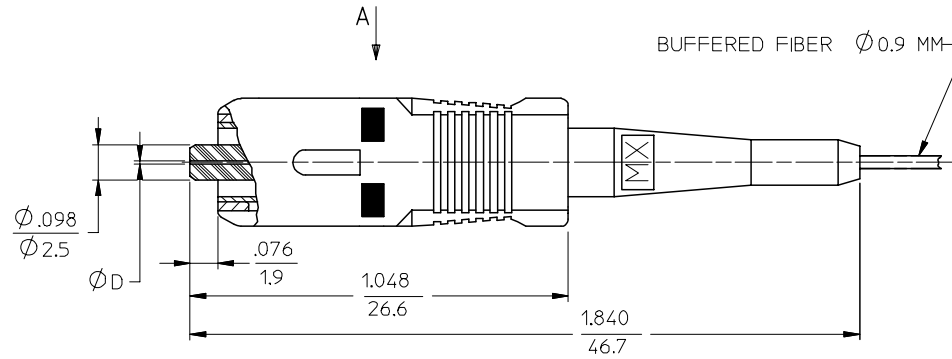
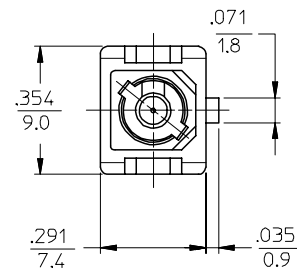


	13	12	11	10	9	8	7	6	5	4	3	2	1
	CONNECTOR P/N	Ø (Min)	FERRULE MATERIAL	BOOT COLOR	HOUSING COLOR	CONNECTOR TYPE							
J	106063-0500	127	Zr	BLUE	BLUE	MULTIMODE							
	106063-0520*			BEIGE	BEIGE								
	106063-0560			BLACK	BLACK								
	106063-0590*			RED	RED								
I	106063-0570	125.5		YELLOW	BLUE	SINGLE MODE							
	106063-2510			BLACK	BLACK								
	106063-2500			RED	RED								
	106063-2570			BLUE	BLUE								
H	106063-2580	128		BEIGE	BEIGE	MULTIMODE							
	106063-3500			BLACK	BLACK								
	106063-3560			RED	RED								
	106063-3570			YELLOW	BLUE								
G	106063-3580	125		BLACK	BLACK	SINGLE MODE							
	106063-4500			RED	RED								
	106063-4510			YELLOW	BLUE								
	106063-5500			BLACK	BLACK								
F	106063-5590*	126	RED	RED	SINGLE MODE								
	106063-5570		YELLOW	BLUE									
	106063-5580		BEIGE	BEIGE									
E	106063-7500	127	YELLOW	BLUE	SINGLE MODE								
	106063-3540	128	BEIGE	BEIGE									MULTIMODE



VIEW A
SCALE 2.5:1



NOTES:

1. ALL DIMENSIONS ARE FOR REFERENCE ONLY.

*2. P/N 106063-0590, P/N 106063-5590, P/N 106063-3540 AND P/N 106063-0520 ARE BULK PACKED IN QUANTITIES OF 100PCS.

ENTER DESCRIPTION EC NO: MF2006-0424 DRAWN/RPACIFICI 2006/01/24 CHKD: 2006/01/24 APPR: JGUMIN 2006/01/24 REVISION	QUALITY SYMBOLS	GENERAL TOLERANCES (UNLESS SPECIFIED)		DIMENSION STYLE INCH ONLY		SCALE 4:1	DESIGN UNITS INCH	THIRD ANGLE PROJECTION
	▽=0	mm	INCH	DRAWN BY RPACIFICI	DATE 2005/12/22	TITLE SC BARE FIBER CONNECTOR		
	▽=0	4 PLACES ± --- ± ---	3 PLACES ± --- ± ---	CHECKED BY	DATE	APPROVED BY		
		2 PLACES ± --- ± ---	1 PLACE ± --- ± ---	APPROVED BY		DATE	MATERIAL NO. DOCUMENT NO. SHEET NO.	
	ANGULAR ±1/2°		DRAFT WHERE APPLICABLE MUST REMAIN WITHIN DIMENSIONS		SEE TABLE		MOLEX INCORPORATED	
					SD-106063-X5X0		1 OF 1	
THIS DRAWING CONTAINS INFORMATION THAT IS PROPRIETARY TO MOLEX INCORPORATED AND SHOULD NOT BE USED WITHOUT WRITTEN PERMISSION								