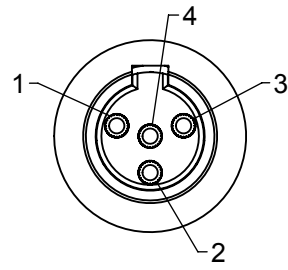
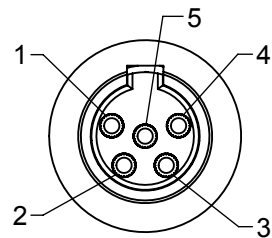


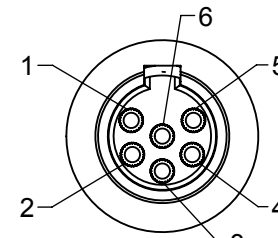
**TA3MS SERIES  
3 PIN**



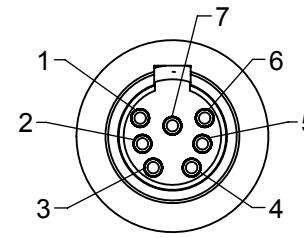
**TA4MS SERIES  
4 PIN**



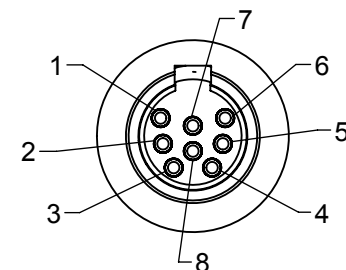
**TA5MS SERIES  
5 PIN**



**TA6MS SERIES  
6 PIN**



**TA7MS SERIES  
7 PIN**

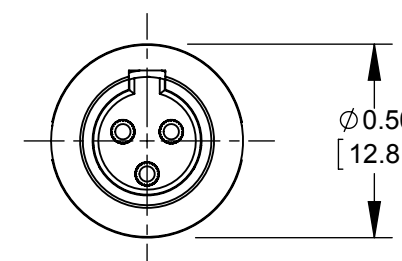
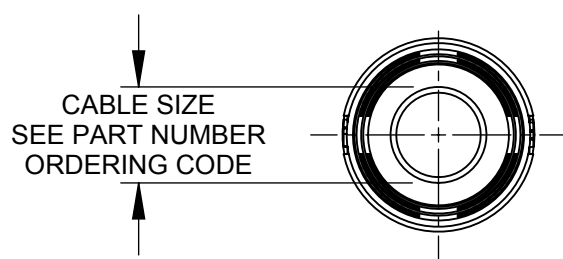
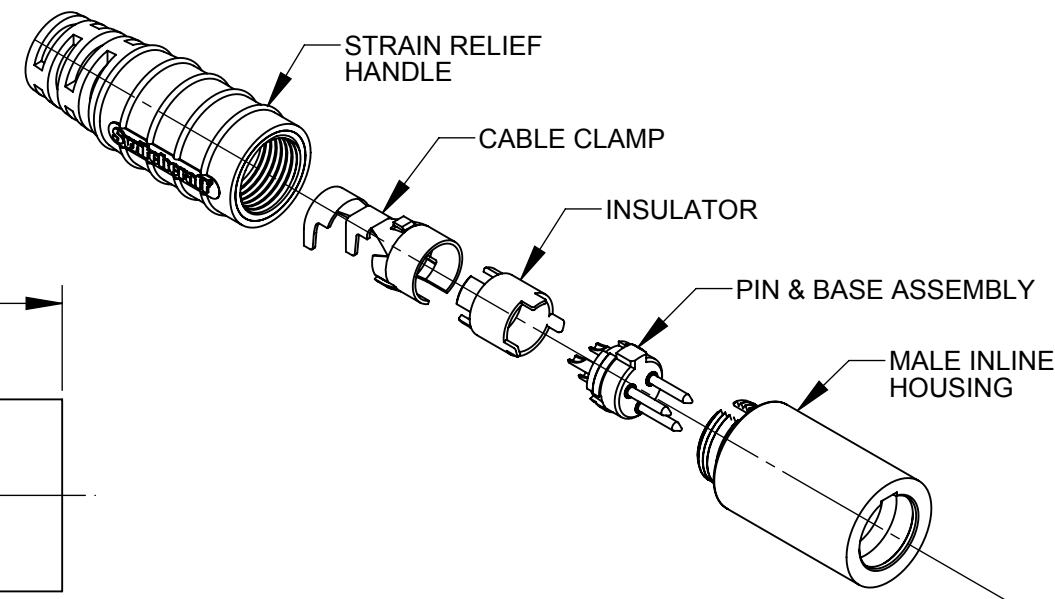
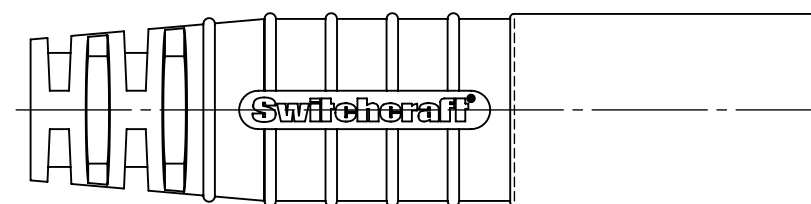
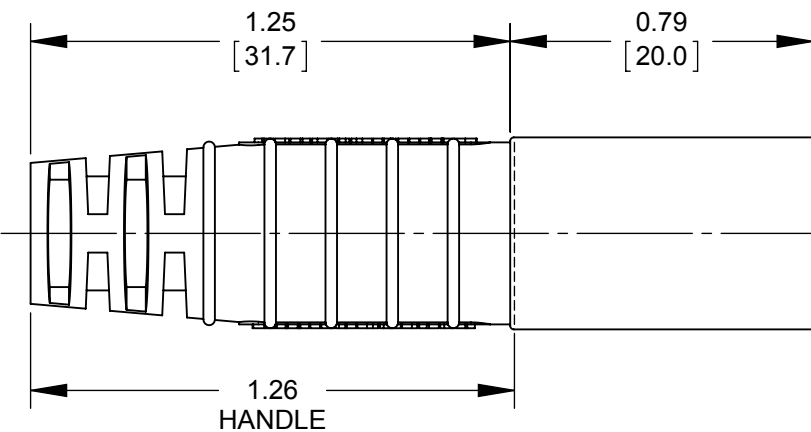


**TA8MS SERIES  
8 PIN**

**AS VIEWED FROM FRONT MATING VIEW**

<b>T</b>	<b>A</b>		<b>M</b>	<b>S</b>	
SERIES					CABLE SIZE
NUMBER OF CONTACTS					11 - $\varnothing$ 0.100 - 0.120 [ $\varnothing$ 2.54 - 3.05]
3 - 3 PIN 22 AWG PINS					15 - $\varnothing$ 0.140 - 0.160 [ $\varnothing$ 3.56 - 4.06]
4 - 4 PIN 22 AWG PINS					20 - $\varnothing$ 0.190 - 0.210 [ $\varnothing$ 4.83 - 5.33]
5 - 5 PIN 22 AWG PINS					25 - $\varnothing$ 0.230 - 0.260 [ $\varnothing$ 5.84 - 6.60]
6 - 6 PIN 22 AWG PINS					
7 - 7 PIN 28 AWG PINS					
8 - 8 PIN 28 AWG PINS					
				<b>S</b> - SEALED VERSION	
				GENDER	
				<b>M</b> - MALE	

**PART NUMBER ORDERING CODE**



**CUSTOMER DRAWING**

**NOTES:**

- MATERIALS:**  
 HOUSING - COPPER ALLOY, NICKEL-PLATED  
 PIN CONTACTS - COPPER ALLOY, SILVER PLATED  
 PIN INSULATOR - RIGID DARK BROWN THERMOPLASTIC  
 CABLE CLAMP - STEEL, TIN PLATED  
 BUTTON BOOT - BLACK THERMOPLASTIC RUBBER  
 INSERT MOLDED HANDLE - THERMOPLASTIC RUBBER OVER RIGID THERMOPLASTIC, BLACK
- THIS PRODUCT IS RoHS COMPLIANT.

					THIS DRAWING DESCRIBES A DESIGN CONSIDERED PROPRIETARY IN NATURE, DEVELOPED AND MANUFACTURED BY SWITCHCRAFT INC. AND IS RELEASED ON A CONFIDENTIAL BASIS FOR IDENTIFICATION PURPOSES ONLY.					
					SIZE	WIDTH	MULT	LBS/M	TEMPER	
					FINISH			MATERIAL		
					SPEC No.			SPEC No.		
					FIRST USED ON		SCALE 2:1			
					DATE DRAWN	BY	CHKD	APVD		
					1/29/13	AB	AB	TJK		
							1/29/13	9-28-15		
					NAME			PART No.		
					SEALED TINI Q-G MALE, RoHS			TA_MS SERIES		
					DO NOT SCALE DRAWING					REV
										<b>B</b>