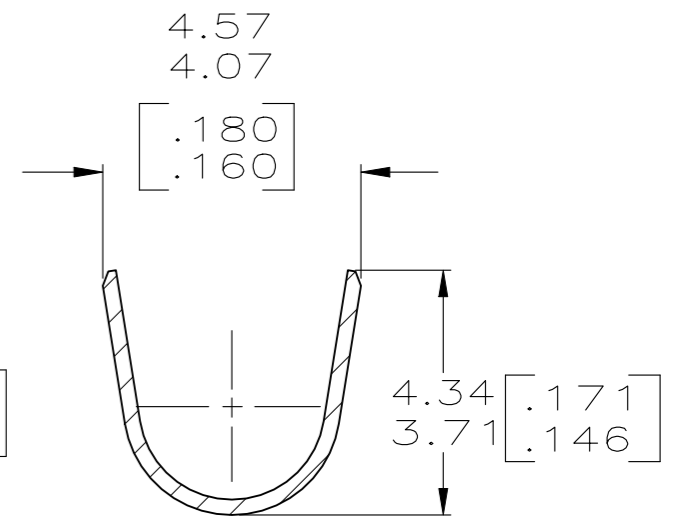
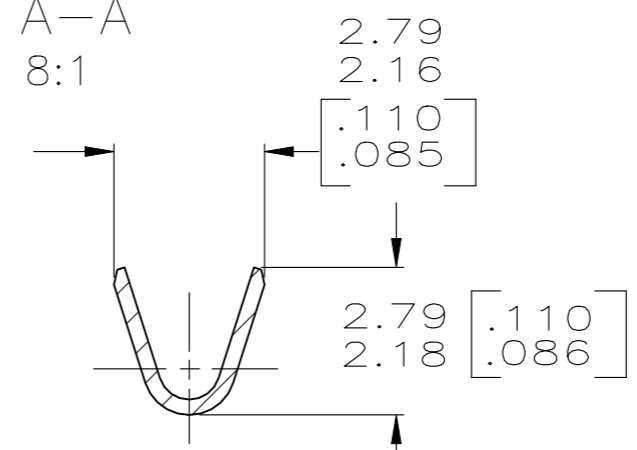
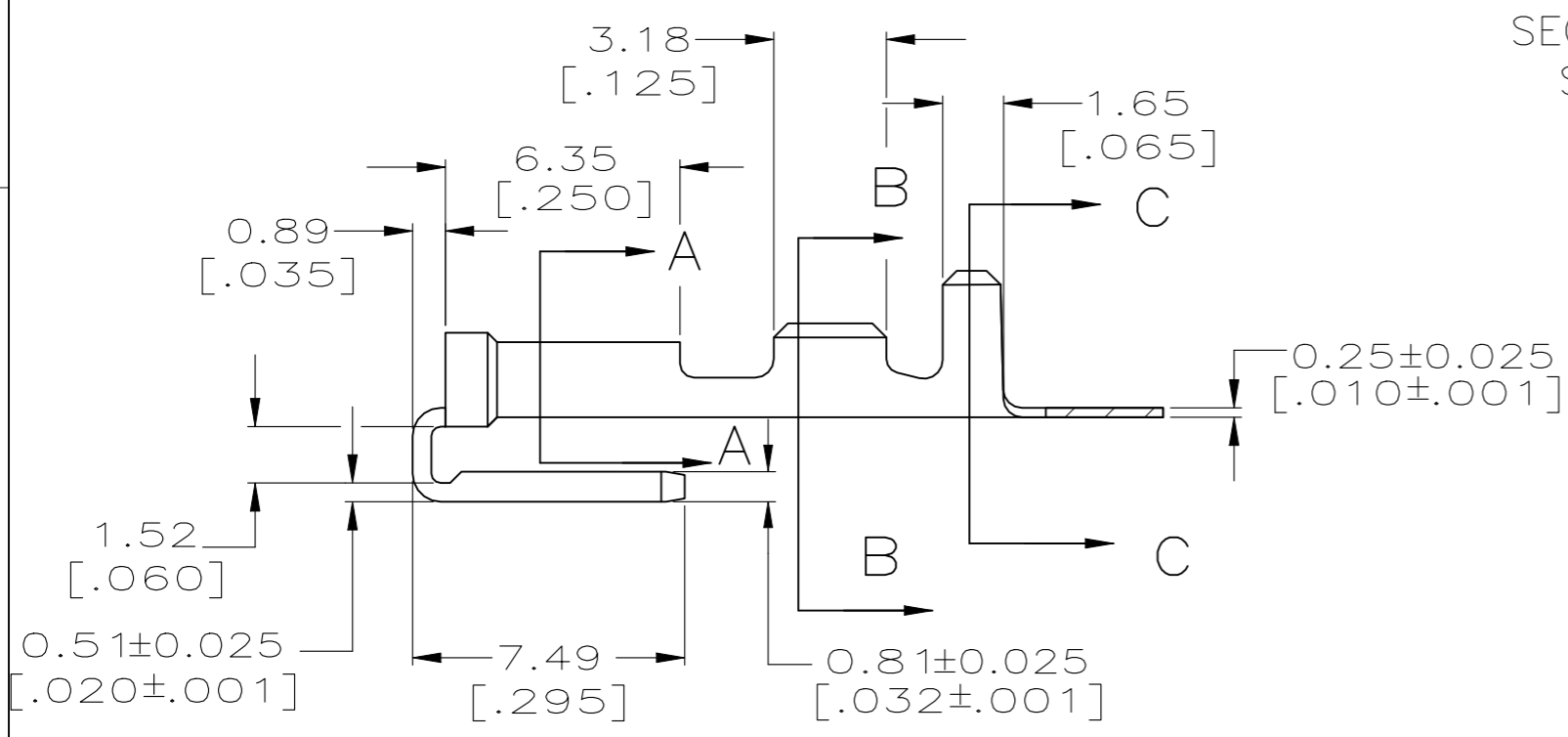
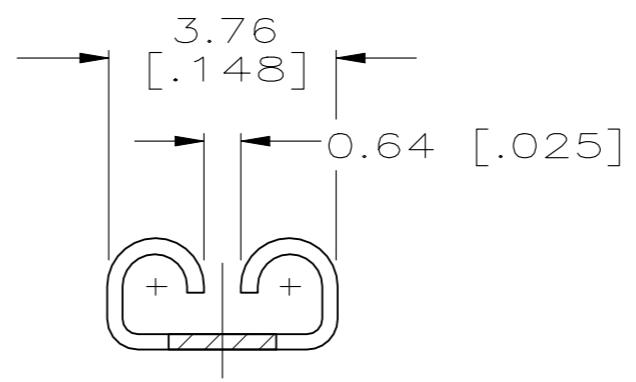
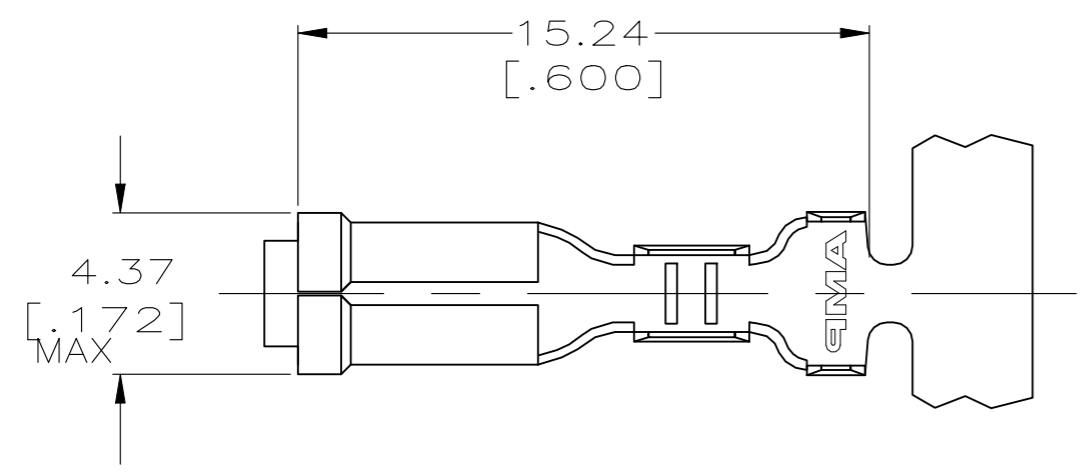


REVISIONS					
P	LTR	DESCRIPTION	DATE	DWN	APVD
	B1	REVISED PER ECR-21-113405	31MAY2022	SS	DH

- CONTINUOUS STRIP ON REELS.
- FIRST INSERTION 10 LBS MAX  
FIRST EXTRACTION 2 LBS MIN  
USE TEST TAB 62061-2.
- THE GAP ON THE ROLLS TO BE IN CONTACT WITH THE TAB FOR THE LENGTH OF THE ROLL BEHIND THE LEAD-IN.



2.03-3.05 DIA [.080-.120] DIA	[#22-#18] AWG	0.81±0.025 [.032±.001]	1217145-1
INSULATION RANGE	WIRE SIZE	MATING TAB THICKNESS	PART NO.

THIS DRAWING IS A CONTROLLED DOCUMENT.		DWN JR RUTH 18MAR99	 TE Connectivity  RECEPTACLE, FASTON, PIGGYBACK, 2.79 [.110] SERIES											
DIMENSIONS: mm [INCHES]		CHK MS FEHER 18MAR99												
TOLERANCES UNLESS OTHERWISE SPECIFIED:		APVD D BRATINA 18MAR99												
<table border="0"> <tr><td>0 PLC</td><td>± -</td></tr> <tr><td>1 PLC</td><td>± -</td></tr> <tr><td>2 PLC</td><td>± 0.25 [.010]</td></tr> <tr><td>3 PLC</td><td>± -</td></tr> <tr><td>4 PLC</td><td>± -</td></tr> <tr><td>ANGLES</td><td>± -</td></tr> </table>		0 PLC			± -	1 PLC	± -	2 PLC	± 0.25 [.010]	3 PLC	± -	4 PLC	± -	ANGLES
0 PLC	± -													
1 PLC	± -													
2 PLC	± 0.25 [.010]													
3 PLC	± -													
4 PLC	± -													
ANGLES	± -													
MATERIAL BRASS	FINISH 0.002032 [.000080] MIN TIN	APPLICATION SPEC 114-2082	SIZE A3	CAGE CODE 00779	DRAWING NO C-1217145	RESTRICTED TO -								
CUSTOMER DRAWING			WEIGHT 0.000000	SCALE 5:1	SHEET 1 OF 1	REV B1								