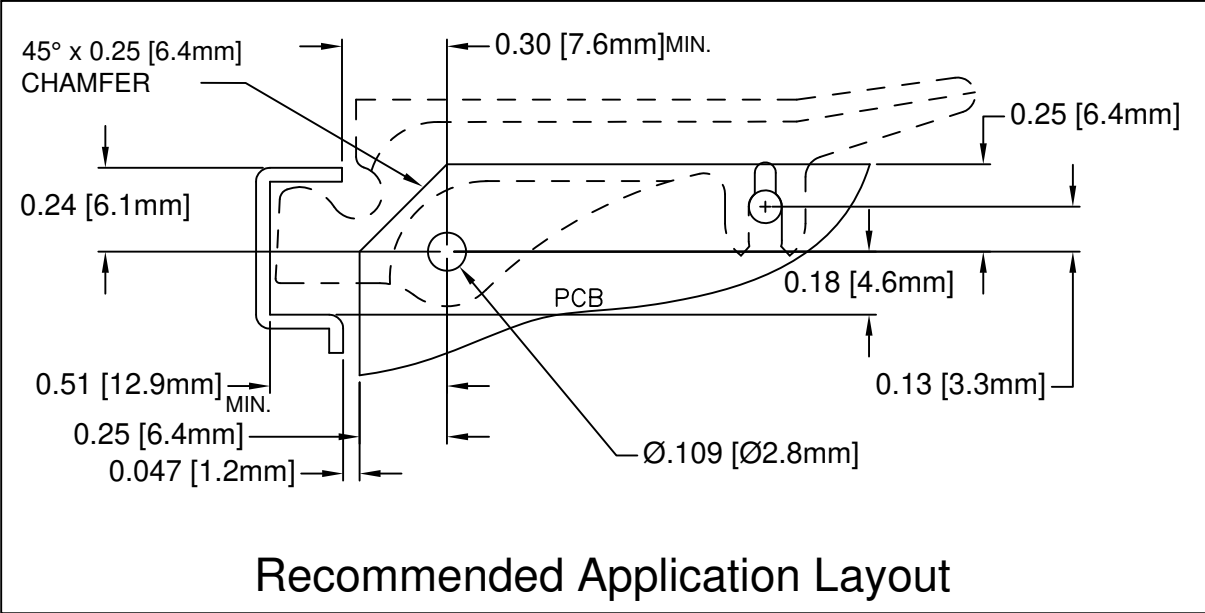
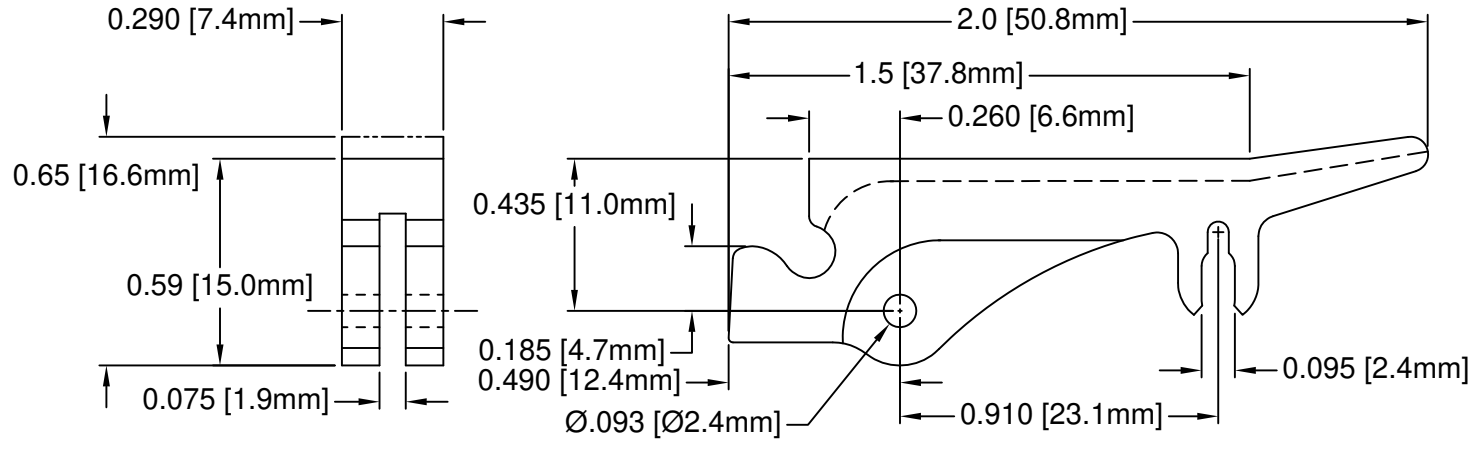


REV.	DESCRIPTION	DATE	APPROVED
B	Engineering Update w/o Changes	02/27/04	M. C.
C	Corrected Typo in Part Number Offering List	11/04/13	T. Y.
D	Added Notes 4, 5 & Updated P/N Table	10/30/15	J. C.



PART NO.	COLOR	ROLL PIN	CARD THICKNESS
LP-1107 NT	NATURAL	RP-250	1/16"(1.6mm)
LP-1107 BK	BLACK	RP-250	

5. PRE-ASSEMBLED ROLL PINS AVAILABLE UPON REQUEST.
4. ROLL PINS INCLUDED. PACKAGED SEPARATELY.
3. MATERIAL: NYLON 6/6, 94V-0, NATURAL.
2. MATERIAL: NYLON 6/6, 94V-0, BLACK.
1. GENERAL SPECIFICATIONS: BIVAR MOLDED COMPONENT SPECIFICATION BV00-E101.

STANDARD TOLERANCE (UNLESS OTHERWISE SPECIFIED)		BIVAR [®] 4 THOMAS, IRVINE, CA. 92618 TEL: (949) 951-8808 FAX: (949) 951-3974	
DECIMALS	ANGULAR		
.X ± .1	X° ± 1°	 TITLE: INSERTER/EXTRACTOR	
.XX ± .01			
.XXX ± .005			
DESIGNED: S. Irving	DATE: 11/14/00	PART NO: LP-1107 XX	REVISION: D
CHECKED: M. Chen	DATE: 07/02/02	CAGE CODE : 32559	SHEET # 1 OF 1
CAD GENERATED DOCUMENT. DO NOT MEASURE DRAWING.			