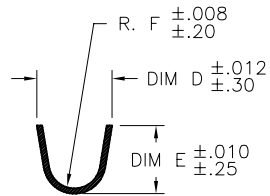
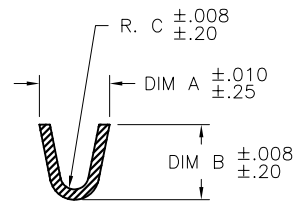


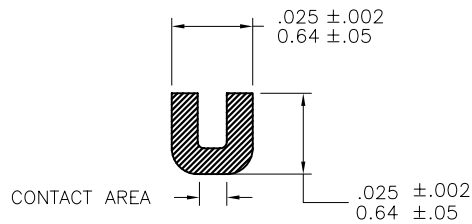
PRODUCT NUMBER
SEE SHEET 2



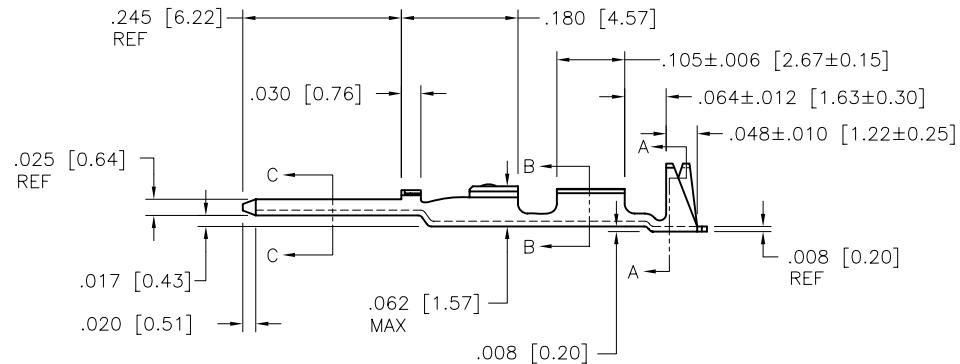
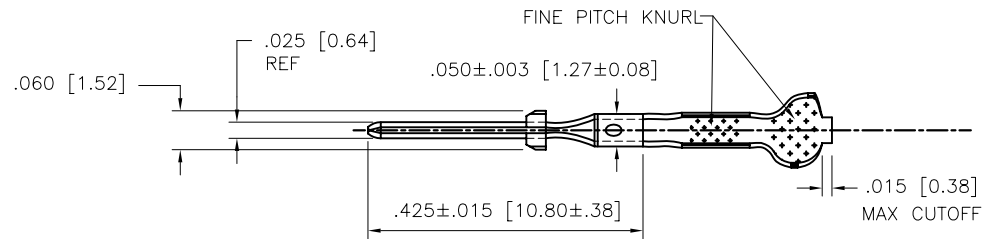
SECTION A-A
SCALE 2:1



SECTION B-B
SCALE 2:1



SECTION C-C
SCALE 5:1



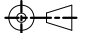

mat'l. code 3/4 HD BRASS CDA NO. 260				surface <input checked="" type="checkbox"/> tolerance		projection		product family PV TERMINAL	
ltr ecn no dr date				tolerances unless otherwise specified				title CTW MALE PIN LOOSE PIECE	
D	V41704	SAR	1994-11-30	angles	XX ±.01/XX±3	INCH/MM		dwg no sheet 1 of 2 size 75654 A4 type CUSTOMER Drawing	
E	V05-0467	HTB	2005-05-23		XXX ±.005/XX±.13	scale 4/1			
F	V05-0530	HTB	2005-05-31	0° ±2'	XXXX ±.0020/XXX±.051				
G	V06-0623	HTB	2006-06-28	dr	S. ROYER	1994-11-30			
H	V07-0218	HTB	2007-03-16	engr	T. HANNA	1994-11-30			
				chr	T. HANNA	1994-11-30			
				appd	T. HANNA	1994-11-30			
sheet index	revision sheet	H	H						
		1	2						

PRODUCT NUMBER NOTE 4	WIRE AWG	WIRE BARREL			INSULATION BARREL		
		A	B	C	D	E	F
75654-001	28-32	.054/1.37	.058/1.47	.011/0.28	.115/2.92	.105/2.67	.040/1.02
75654-001LF	28-32	.054/1.37	.058/1.47	.011/0.28	.115/2.92	.105/2.67	.040/1.02
75654-002	22-26	.070/1.78	.065/1.65	.017/0.43	.139/3.53	.120/3.05	.050/1.27
75654-002LF	22-26	.070/1.78	.065/1.65	.017/0.43	.139/3.53	.120/3.05	.050/1.27
75654-003	18-20	.104/2.64	.104/2.64	.021/0.53	.139/3.53	.120/3.05	.050/1.27
75654-003LF	18-20	.104/2.64	.104/2.64	.021/0.53	.139/3.53	.120/3.05	.050/1.27

OBSOLETE
NOTE 6
OBSOLETE
NOTE 6
OBSOLETE
NOTE 6

NOTES:

1. PLATING: 100μ"/2.54μ SnPb MINIMUM PRE-PLATED
P/N WITH LF SUFFIX: 100μ"/2.54μ Sn MINIMUM PRE-PLATED
2. PART MAY BE USED WITH MINI-LATCH HSG.
3. APPLICABLE SPECIFICATIONS:
A. BUS-12-098: PRODUCT SPECIFICATION
B. TA-211: CRIMP SPECIFICATION
- ④ PART NUMBERS WITH AN LF SUFFIX MEET EUROPEAN UNION DIRECTIVES AND OTHER COUNTRY REGULATIONS AS DESCRIBED IN GS-22-008.
5. THIS PRODUCT IS NOT INTENDED TO BE EXPOSED TO MANUFACTURING SOLDER PROCESSES.
- ⑥ THIS PRODUCT HAS 100% TIN PLATING IN THE INTERFACE AND HAS NOT BEEN TESTED FOR WHISKER GROWTH IN ALL INTERCONNECT ENVIRONMENTS.

mat'l. code 3/4 HD BRAS CDA NO. 260		surface <input checked="" type="checkbox"/> tolerance		projection 		product family PV TERMINAL	
ltr	ecn no	dr	date	tolerances unless otherwise specified		title	
H				angles	fr tol	INCH/MM	
				0° ±2'	XXX +.01/X+3 XXX +.005/XX+13 XXX +.0020/XXX+051	scale 1:1	
		dr	T. BREWBAKER	2005-05-23			
		engr	T. BREWBAKER	2005-05-23			
		chr	T. BREWBAKER	2005-05-23			
		appd	T. BREWBAKER	2005-05-23			
sheet index	revision sheet					dwg no sheet 2 of 2 size 75654 A4 type CUSTOMER Drawing	