

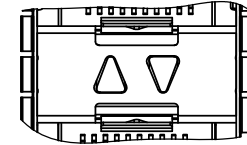
PART NUMBER
(LAST DIGIT INDICATING
PACKAGING TYPE, NOT
PRINTED ON THE PART)

DATE CODE



REVISIONS				
REV.	ECN	DESCRIPTION	DATE	APPROVED
A		PROPOSAL	MAY 25/11	J.SI
B		ADD DIMENSION	JUN 30/11	J.SI
C		MODIFY THE PCB LAYOUT	JUL 17/11	J.SI

LIGHT PIPE CONFIGURATIONS



UE86-KX627-20XX1
(2 INNER LIGHT PIPES PER 2X1)

MATERIAL: (RoHS COMPLIANT)

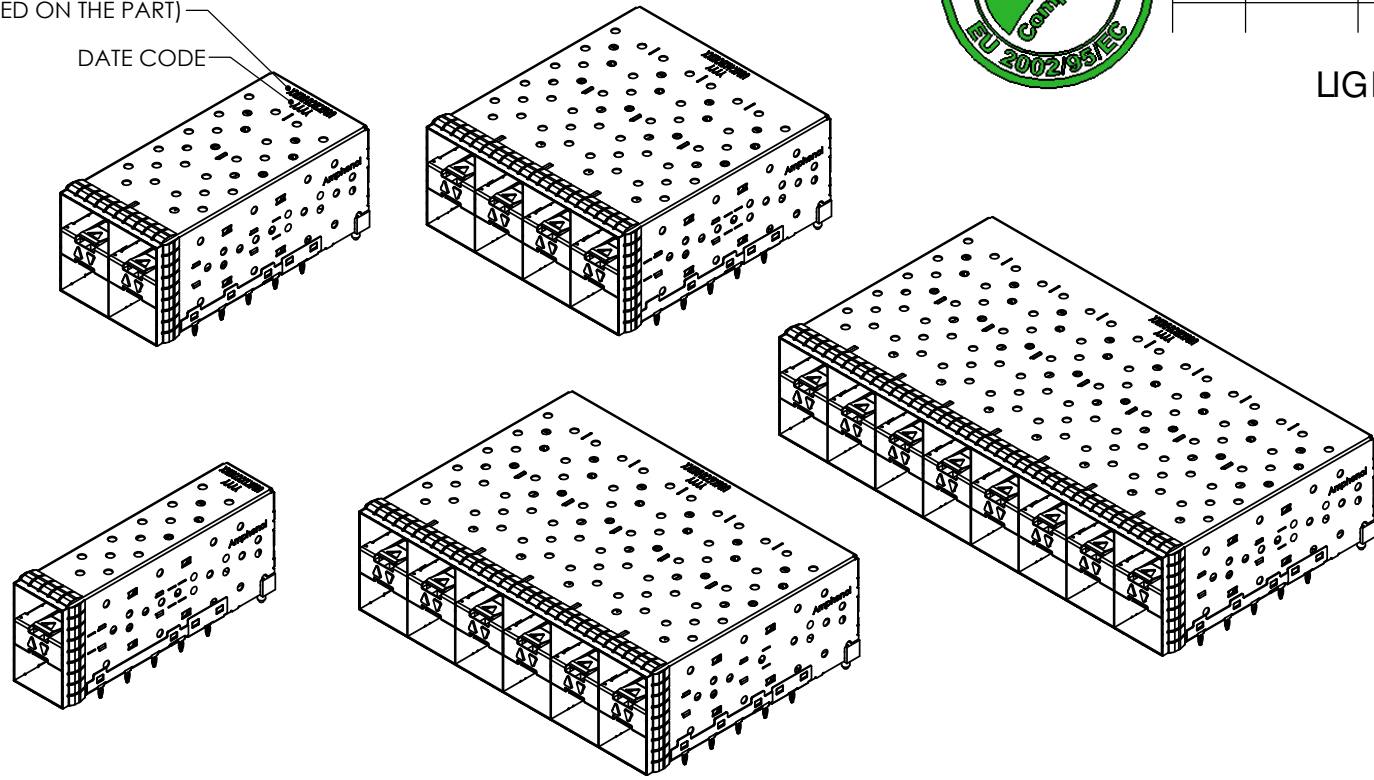
- CAGE - PRESS FIT:
- COPPER ALLOY
- PLATING:
- NICKEL 2.54 µm MIN.
- CONNECTOR - PRESS FIT:
- PLASTIC HOUSING:
- LCP, FLAMMABILITY RATING UL94-V0.
- CONTACTS:
- PHOSPHOR BRONZE
- PLATING OPTION:
- SEE AMPHENOL PART NUMBER CONFIGURATION FOR OPTIONS.

LIGHT PIPE:

- CLEAR POLYCARBONATE, FLAMMABILITY RATING UL94-V0.

PACKAGING:

- TRAY PACKAGING.
- TEMPERATURE RANGE: -40°C TO +85°



AMPHENOL PART NUMBER CONFIGURATION

UE86 - K X 627 - 2 0 X X 1

NUMBER OF PORTS

- 1 = 2X1
- 2 = 2X2
- 4 = 2X4
- 6 = 2X6
- 8 = 2X8

PACKAGING

- 1 = TRAY

CAGE PLATING

- 2 = NICKEL

PRESS FIT CONNECTOR PLATING

- 3 = 0.76 µm MIN. GOLD ON MATING AREA
3.81-7.62 µm MATTE TIN ON TERMINATION
- 6 = 0.38 µm MIN. GOLD ON MATING AREA
3.81-7.62 µm MATTE TIN ON TERMINATION

DO NOT SCALE DRAWING

THIS DOCUMENT CONTAINS PROPRIETARY INFORMATION AND SUCH INFORMATION MAY NOT BE DISCLOSED TO OTHERS FOR ANY PURPOSE OR USED FOR MANUFACTURING PURPOSES WITHOUT PERMISSION FROM AMPHENOL CANADA CORP.

UNLESS OTHERWISE SPECIFIED
DIMENSIONS ARE IN MILLIMETERS
TOLERANCES ARE:

DECIMALS ANGLES
X.X ± 0.25 ± 1°
X.XX ± 0.15

MATERIAL AND FINISH
N/A

REF. X

CODE IDENT. NO. 03554

APPROVALS		DATE	
DRAWN	MIKE.H	MAY 25/11	
DESIGNED			
CHECKED	J. SI	MAY 25/10	
QA APP'D	X	X	
IE APP'D	X	X	
DWG APP'D			

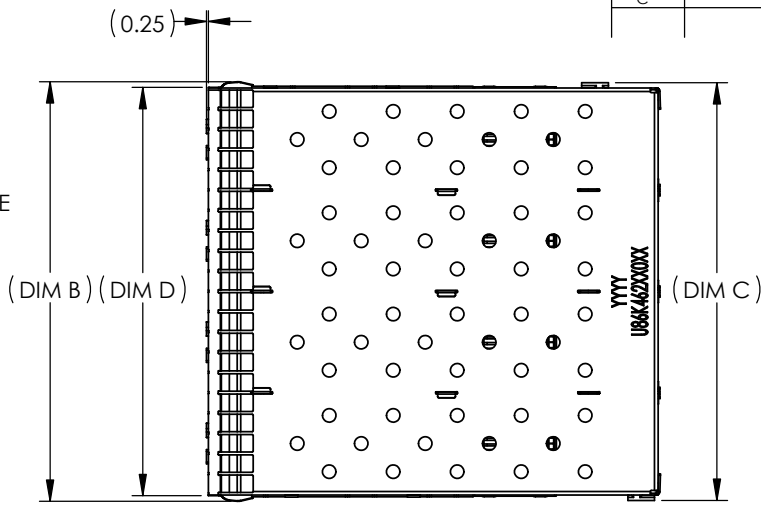
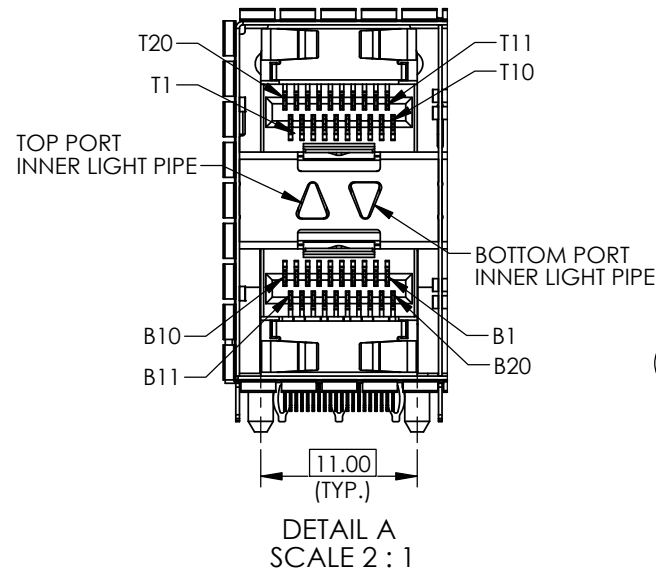
Amphenol Canada Corp.

TITLE
2XN SFP+ EXPRESSPORT™ COMBO
WITH LARGE LIGHT PIPE OPTIONS
SPRING FINGER EMI

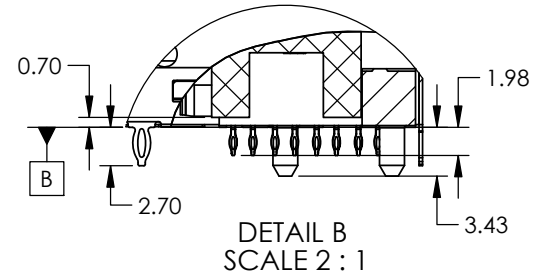
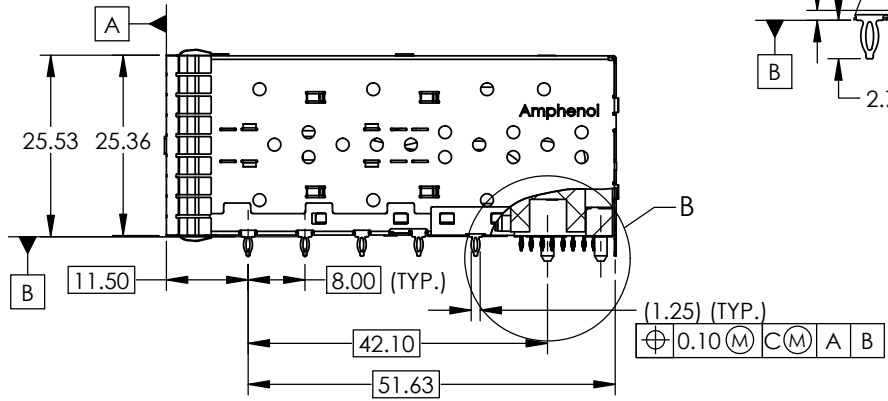
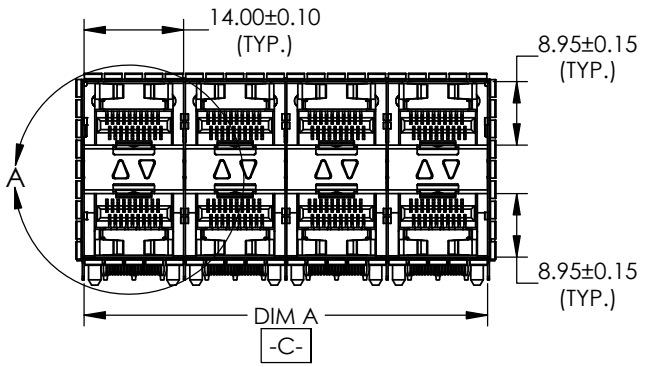
SIZE A4 DWG. NO. P-UE86-KX627-20XX1 REV. C

SCALE 2:3 PROJECT SHEET 1 OF 8

REVISIONS					
REV.	ECN	DESCRIPTION	DATE	APPROVED	
A		PROPOSAL	MAY 25/11	J.SI	
B		ADD DIMENSION	JUN 30/11	J.SI	
C		MODIFY THE PCB LAYOUT	JUL 17/11	J.SI	



SFP COMBO	DIM A	DIM B	DIM C	DIM D
2X1 SFP	14.00	16.26	16.00	14.70
2X2 SFP	28.25	30.51	30.25	28.95
2X4 SFP	56.75	59.01	58.75	57.45
2X6 SFP	85.25	87.51	87.25	85.95
2X8 SFP	113.75	116.01	115.75	114.45

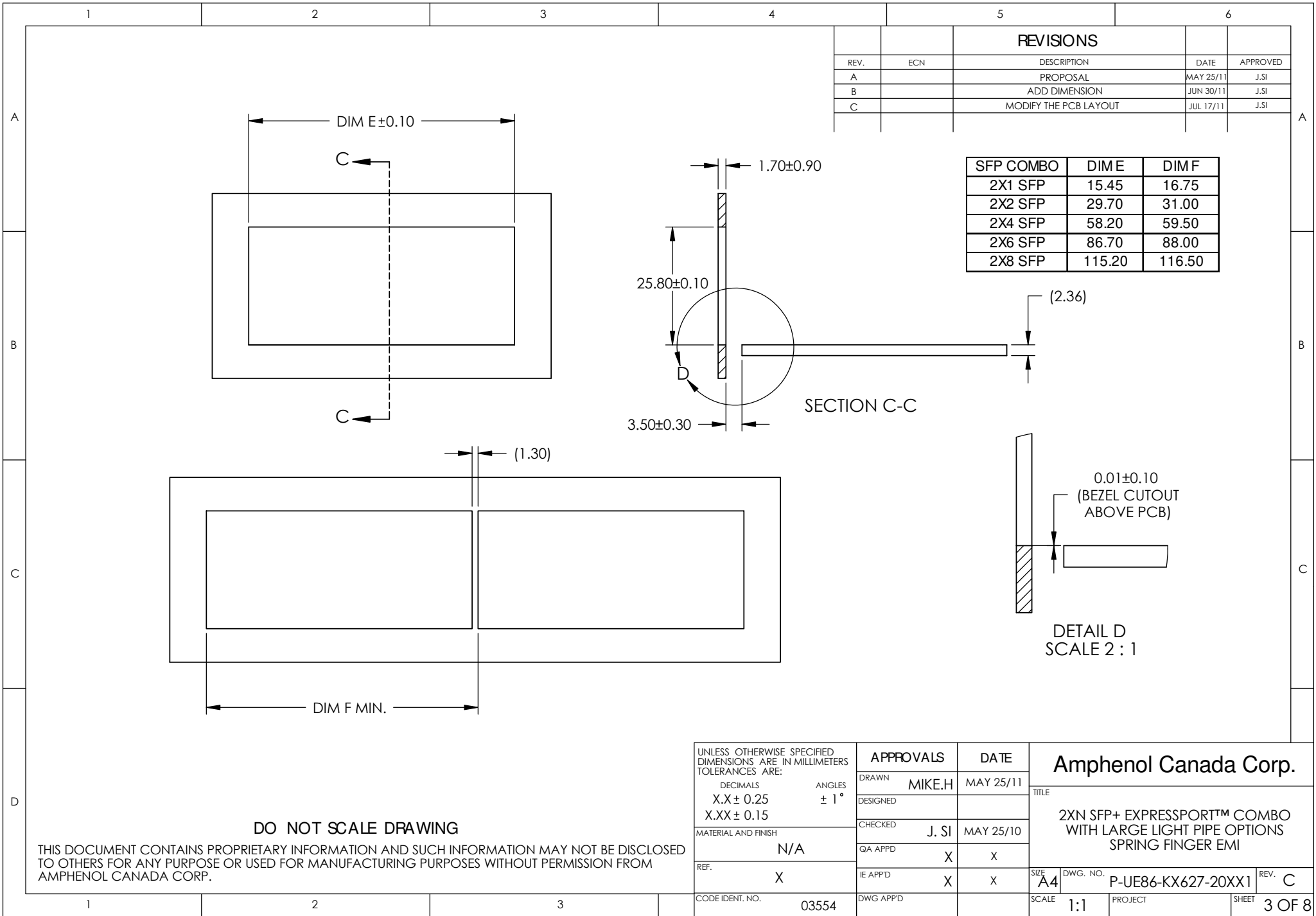


UNLESS OTHERWISE SPECIFIED DIMENSIONS ARE IN MILLIMETERS TOLERANCES ARE:		APPROVALS		DATE	
DECIMALS	ANGLES	DRAWN	MIKE.H	MAY 25/11	
X.X ± 0.25	± 1°	DESIGNED			
X.XX ± 0.15		CHECKED	J. SI	MAY 25/10	
MATERIAL AND FINISH	N/A	QA APPD	X	X	
REF.	X	IE APPD	X	X	
CODE IDENT. NO.	03554	DWG APPD			

Amphenol Canada Corp.		
TITLE		
2XN SFP+ EXPRESSPORT™ COMBO WITH LARGE LIGHT PIPE OPTIONS SPRING FINGER EMI		
SIZE	DWG. NO.	REV.
A4	P-UE86-KX627-20XX1	C
SCALE	PROJECT	SHEET
1:1		2 OF 8

DO NOT SCALE DRAWING

THIS DOCUMENT CONTAINS PROPRIETARY INFORMATION AND SUCH INFORMATION MAY NOT BE DISCLOSED TO OTHERS FOR ANY PURPOSE OR USED FOR MANUFACTURING PURPOSES WITHOUT PERMISSION FROM AMPHENOL CANADA CORP.



REVISIONS				
REV.	ECN	DESCRIPTION	DATE	APPROVED
A		PROPOSAL	MAY 25/11	J.SI
B		ADD DIMENSION	JUN 30/11	J.SI
C		MODIFY THE PCB LAYOUT	JUL 17/11	J.SI

SFP COMBO	DIME	DIM F
2X1 SFP	15.45	16.75
2X2 SFP	29.70	31.00
2X4 SFP	58.20	59.50
2X6 SFP	86.70	88.00
2X8 SFP	115.20	116.50

UNLESS OTHERWISE SPECIFIED DIMENSIONS ARE IN MILLIMETERS TOLERANCES ARE:		APPROVALS		DATE
DECIMALS	ANGLES	DRAWN	MIKE.H	MAY 25/11
X.X ± 0.25	± 1°	DESIGNED		
X.XX ± 0.15		CHECKED	J. SI	MAY 25/10
MATERIAL AND FINISH	N/A	QA APP'D	X	X
REF.	X	IE APP'D	X	X
CODE IDENT. NO.	03554	DWG APP'D		

Amphenol Canada Corp.			
TITLE			
2XN SFP+ EXPRESSPORT™ COMBO WITH LARGE LIGHT PIPE OPTIONS SPRING FINGER EMI			
SIZE	DWG. NO.	REV.	
A4	P-UE86-KX627-20XX1	C	
SCALE	PROJECT	SHEET	
1:1		3 OF 8	

DO NOT SCALE DRAWING

THIS DOCUMENT CONTAINS PROPRIETARY INFORMATION AND SUCH INFORMATION MAY NOT BE DISCLOSED TO OTHERS FOR ANY PURPOSE OR USED FOR MANUFACTURING PURPOSES WITHOUT PERMISSION FROM AMPHENOL CANADA CORP.

NOTES:

1. DATUM AND BASIC DIMENSIONS ESTABLISHED BY CUSTOMER.

2. 1.05 mm DIAMETER HOLES ARE CHASSIS GROUND (13 HOLES).

REVISIONS

REV.	ECN	DESCRIPTION	DATE	APPROVED
A		PROPOSAL	MAY 25/11	J.SI
B		ADD DIMENSION	JUN 30/11	J.SI
C		MODIFY THE PCB LAYOUT	JUL 17/11	J.SI

A

B

C

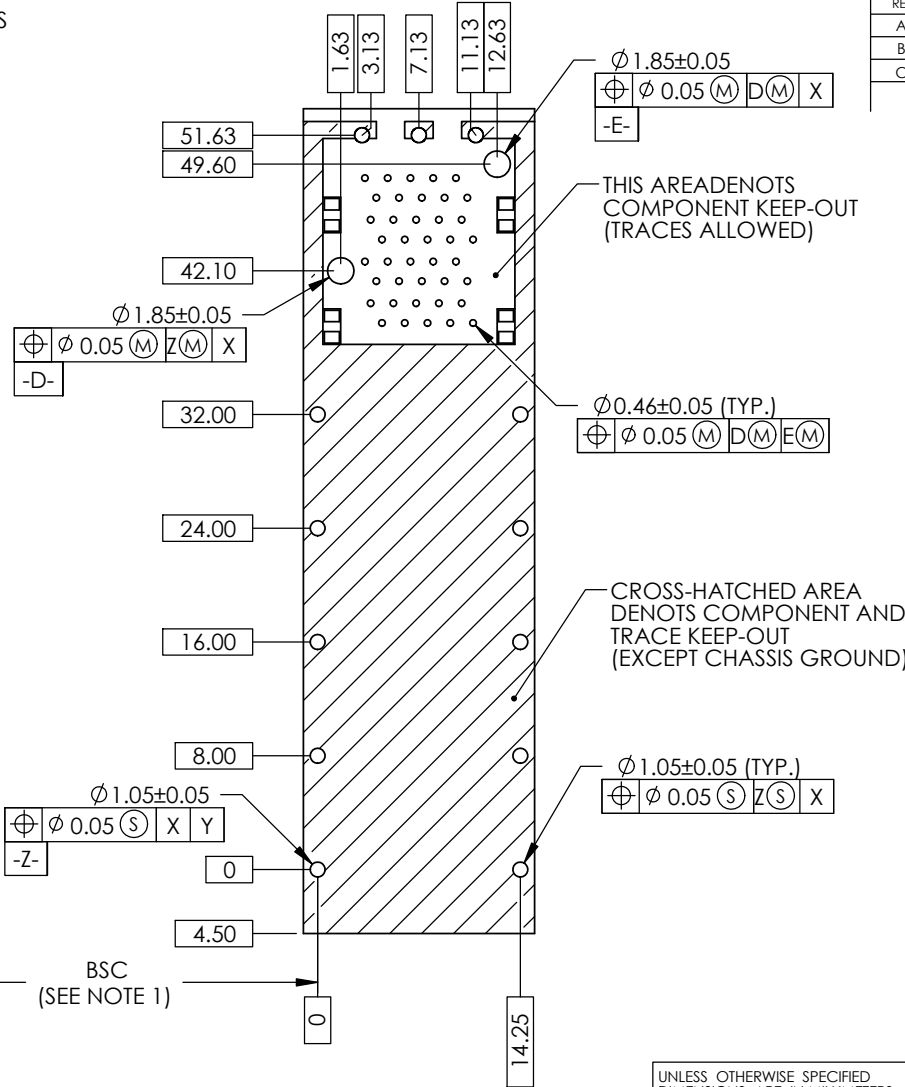
D

A

B

C

D



2X1 PCB LAYOUT

DO NOT SCALE DRAWING

THIS DOCUMENT CONTAINS PROPRIETARY INFORMATION AND SUCH INFORMATION MAY NOT BE DISCLOSED TO OTHERS FOR ANY PURPOSE OR USED FOR MANUFACTURING PURPOSES WITHOUT PERMISSION FROM AMPHENOL CANADA CORP.

UNLESS OTHERWISE SPECIFIED DIMENSIONS ARE IN MILLIMETERS TOLERANCES ARE:		APPROVALS		DATE	Amphenol Canada Corp.	
DECIMALS	ANGLES	DRAWN	MIKE.H	MAY 25/11		
X.X ± 0.25	± 1°	DESIGNED			TITLE	
X.XX ± 0.15		CHECKED	J. SI	MAY 25/10	2XN SFP+ EXPRESSPORT™ COMBO WITH LARGE LIGHT PIPE OPTIONS SPRING FINGER EMI	
MATERIAL AND FINISH	N/A	QA APP'D	X	X	SIZE	DWG. NO. P-UE86-KX627-20XX1
REF.	X	IE APP'D	X	X	SCALE	
CODE IDENT. NO.	03554	DWG APP'D			1:1	PROJECT
						SHEET
						4 OF 8

1

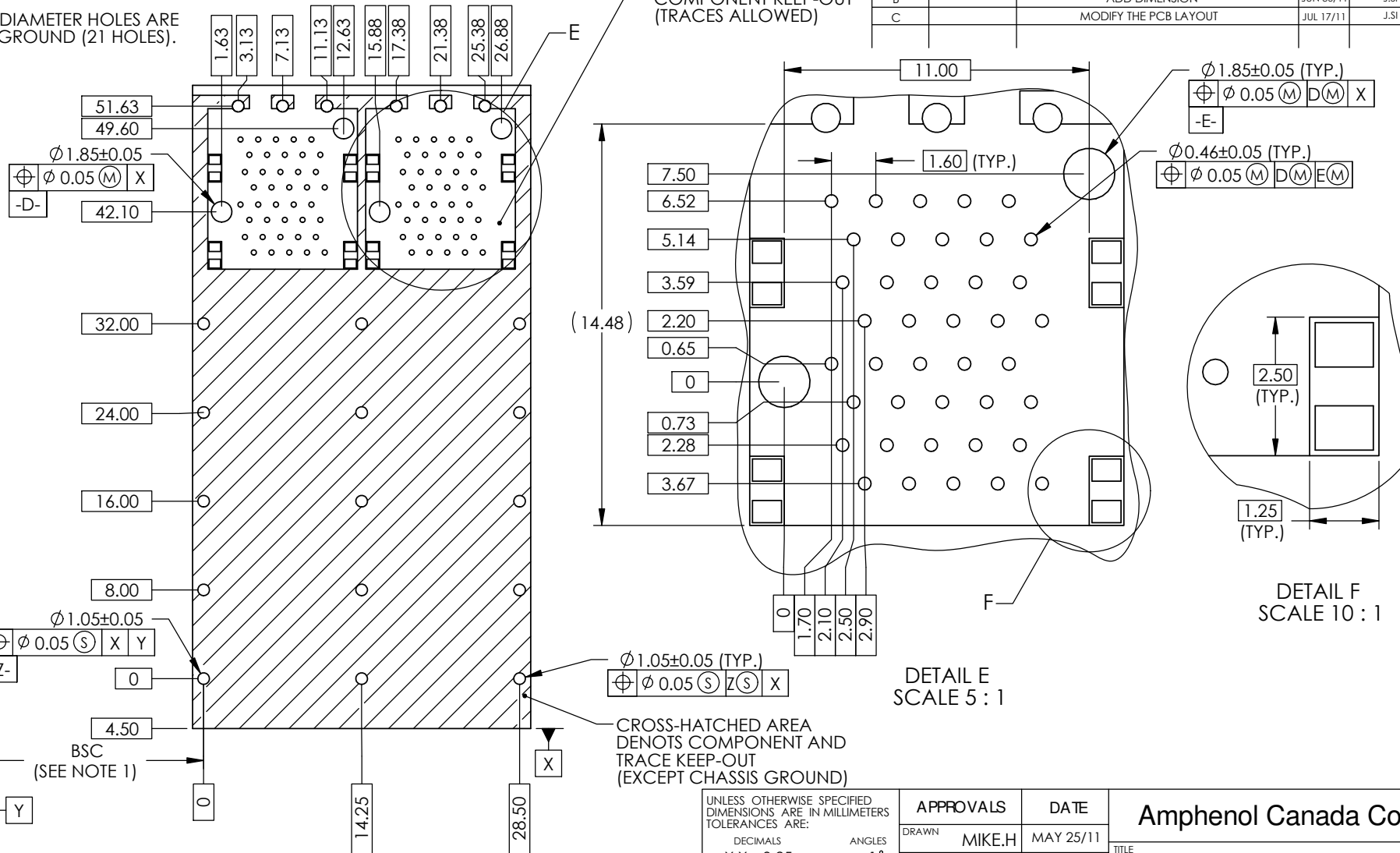
2

3

6

- NOTES:
- DATUM AND BASIC DIMENSIONS ESTABLISHED BY CUSTOMER.
 - 1.05 mm DIAMETER HOLES ARE CHASSIS GROUND (21 HOLES).

REVISIONS				
REV.	ECN	DESCRIPTION	DATE	APPROVED
A		PROPOSAL	MAY 25/11	J.SI
B		ADD DIMENSION	JUN 30/11	J.SI
C		MODIFY THE PCB LAYOUT	JUL 17/11	J.SI



THIS AREA DENOTES COMPONENT KEEP-OUT (TRACES ALLOWED)

CROSS-HATCHED AREA DENOTES COMPONENT AND TRACE KEEP-OUT (EXCEPT CHASSIS GROUND)

DETAIL F
SCALE 10 : 1

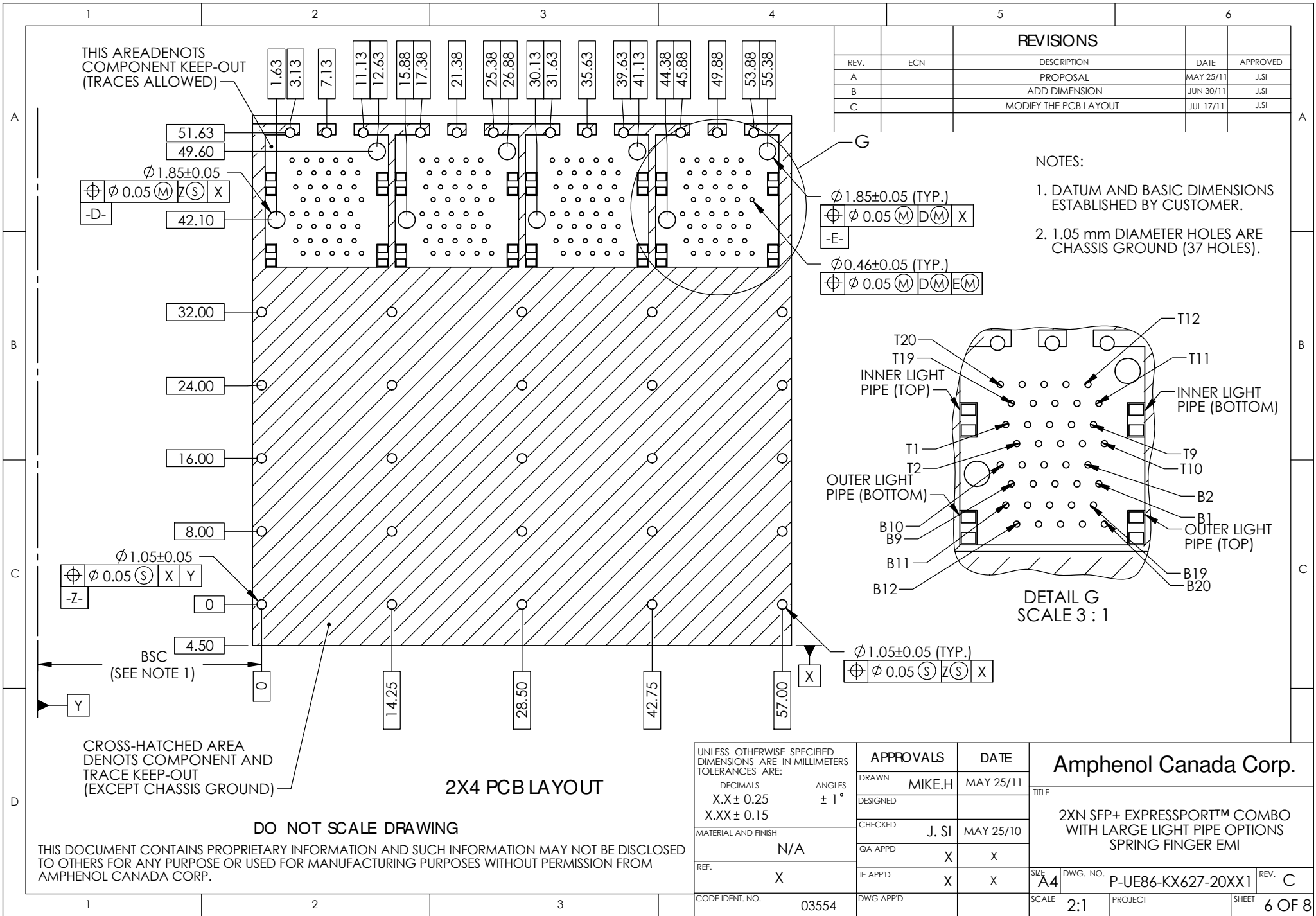
DETAIL E
SCALE 5 : 1

DO NOT SCALE DRAWING 2X2 PCB LAYOUT

THIS DOCUMENT CONTAINS PROPRIETARY INFORMATION AND SUCH INFORMATION MAY NOT BE DISCLOSED TO OTHERS FOR ANY PURPOSE OR USED FOR MANUFACTURING PURPOSES WITHOUT PERMISSION FROM AMPHENOL CANADA CORP.

UNLESS OTHERWISE SPECIFIED DIMENSIONS ARE IN MILLIMETERS TOLERANCES ARE:		APPROVALS		DATE	
DECIMALS	ANGLES	DRAWN	MIKE.H	MAY 25/11	
X.X ± 0.25	± 1°	DESIGNED			
X.XX ± 0.15		CHECKED	J. SI	MAY 25/10	
MATERIAL AND FINISH	N/A	QA APPD	X	X	
REF.	X	IE APPD	X	X	
CODE IDENT. NO.	03554	DWG APPD			

Amphenol Canada Corp.		
TITLE		
2XN SFP+ EXPRESSPORT™ COMBO WITH LARGE LIGHT PIPE OPTIONS SPRING FINGER EMI		
SIZE	DWG. NO.	REV.
A4	P-UE86-KX627-20XX1	C
SCALE	PROJECT	SHEET
2:1		5 OF 8



THIS AREA DENOTES COMPONENT KEEP-OUT (TRACES ALLOWED)

$\varnothing 1.85 \pm 0.05$
 $\varnothing 0.05$ (M) Z(S) X
 -D-

$\varnothing 1.85 \pm 0.05$ (TYP.)
 $\varnothing 0.05$ (M) D(M) X
 -E-

$\varnothing 0.46 \pm 0.05$ (TYP.)
 $\varnothing 0.05$ (M) D(M) E(M)

$\varnothing 1.05 \pm 0.05$
 $\varnothing 0.05$ (S) X Y
 -Z-

$\varnothing 1.05 \pm 0.05$ (TYP.)
 $\varnothing 0.05$ (S) Z(S) X

CROSS-HATCHED AREA DENOTES COMPONENT AND TRACE KEEP-OUT (EXCEPT CHASSIS GROUND)

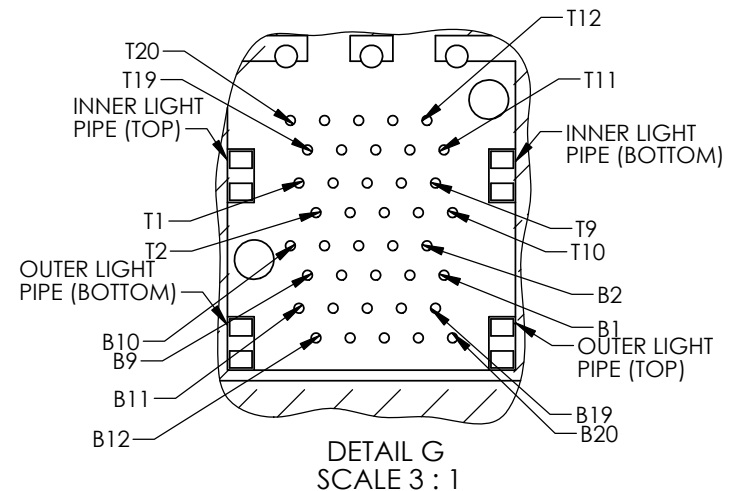
2X4 PCB LAYOUT

DO NOT SCALE DRAWING

THIS DOCUMENT CONTAINS PROPRIETARY INFORMATION AND SUCH INFORMATION MAY NOT BE DISCLOSED TO OTHERS FOR ANY PURPOSE OR USED FOR MANUFACTURING PURPOSES WITHOUT PERMISSION FROM AMPHENOL CANADA CORP.

REVISIONS				
REV.	ECN	DESCRIPTION	DATE	APPROVED
A		PROPOSAL	MAY 25/11	J.SI
B		ADD DIMENSION	JUN 30/11	J.SI
C		MODIFY THE PCB LAYOUT	JUL 17/11	J.SI

- NOTES:
- DATUM AND BASIC DIMENSIONS ESTABLISHED BY CUSTOMER.
 - 1.05 mm DIAMETER HOLES ARE CHASSIS GROUND (37 HOLES).



UNLESS OTHERWISE SPECIFIED DIMENSIONS ARE IN MILLIMETERS TOLERANCES ARE:

DECIMALS	ANGLES
X.X ± 0.25	± 1°
X.XX ± 0.15	

MATERIAL AND FINISH: N/A

REF: X

CODE IDENT. NO. 03554

APPROVALS		DATE
DRAWN	MIKE.H	MAY 25/11
DESIGNED		
CHECKED	J. SI	MAY 25/10
QA APPD	X	X
IE APPD	X	X
DWG APPD		

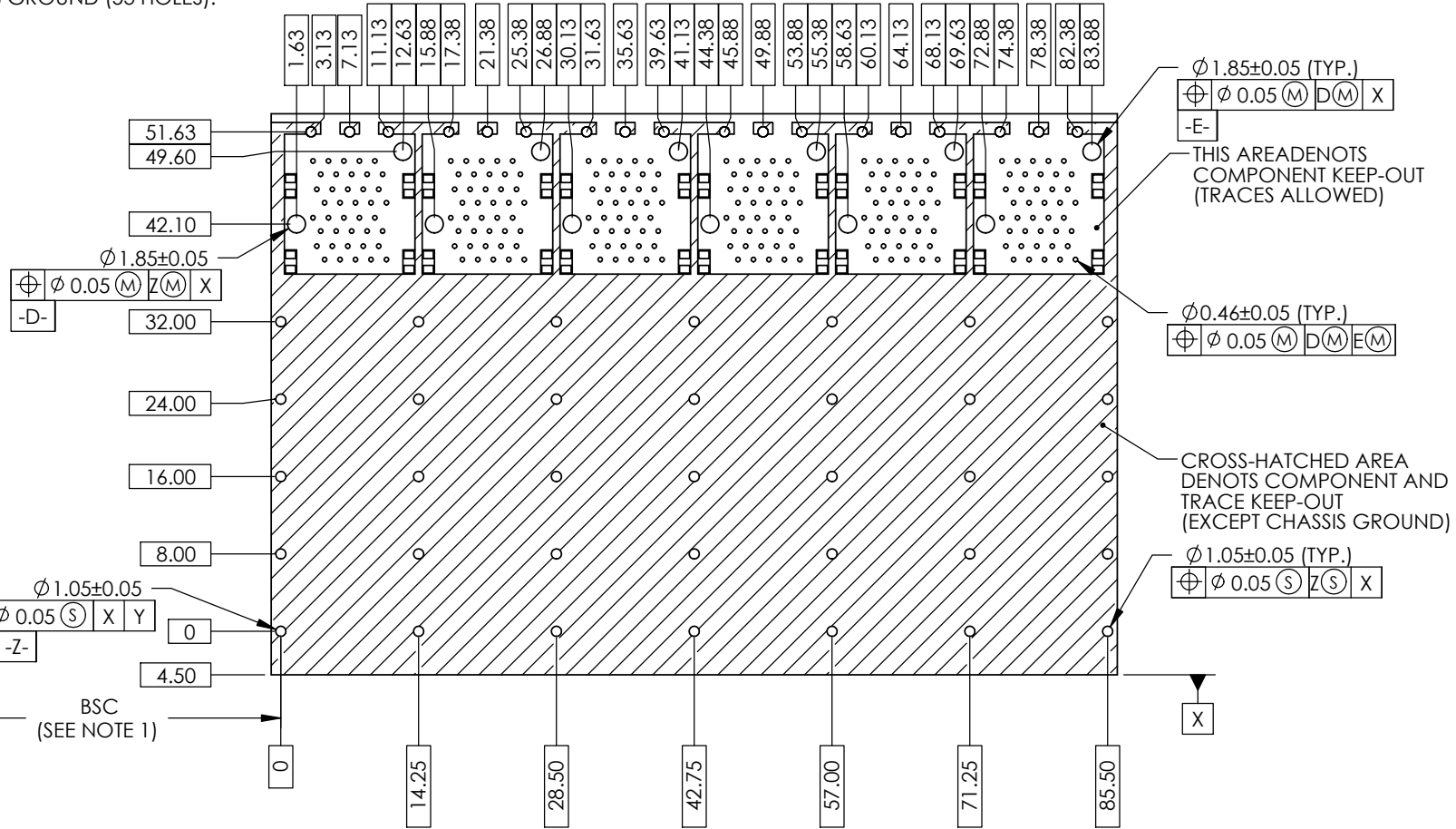
Amphenol Canada Corp.		
TITLE		
2XN SFP+ EXPRESSPORT™ COMBO WITH LARGE LIGHT PIPE OPTIONS SPRING FINGER EMI		
SIZE	DWG. NO.	REV.
A4	P-UE86-KX627-20XX1	C
SCALE	PROJECT	SHEET
2:1		6 OF 8

NOTES:

- DATUM AND BASIC DIMENSIONS ESTABLISHED BY CUSTOMER.
- 1.05 mm DIAMETER HOLES ARE CHASSIS GROUND (53 HOLES).

REVISIONS

REV.	ECN	DESCRIPTION	DATE	APPROVED
A		PROPOSAL	MAY 25/11	J.SI
B		ADD DIMENSION	JUN 30/11	J.SI
C		MODIFY THE PCB LAYOUT	JUL 17/11	J.SI



2X6 PCB LAYOUT

DO NOT SCALE DRAWING

THIS DOCUMENT CONTAINS PROPRIETARY INFORMATION AND SUCH INFORMATION MAY NOT BE DISCLOSED TO OTHERS FOR ANY PURPOSE OR USED FOR MANUFACTURING PURPOSES WITHOUT PERMISSION FROM AMPHENOL CANADA CORP.

UNLESS OTHERWISE SPECIFIED DIMENSIONS ARE IN MILLIMETERS TOLERANCES ARE:		APPROVALS		DATE	Amphenol Canada Corp.	
DECIMALS	ANGLES	DRAWN	MIKE.H	MAY 25/11		
X.X ± 0.25	± 1°	DESIGNED			TITLE	
X.XX ± 0.15		CHECKED	J. SI	MAY 25/10	2XN SFP+ EXPRESSPORT™ COMBO WITH LARGE LIGHT PIPE OPTIONS SPRING FINGER EMI	
MATERIAL AND FINISH	N/A	QA APPD	X	X	SIZE	DWG. NO. P-UE86-KX627-20XX1
REF.	X	IE APPD	X	X	SCALE	
CODE IDENT. NO.	03554	DWG APPD			SCALE	3:2
					PROJECT	
					SHEET	7 OF 8
					REV.	C

NOTES:

- DATUM AND BASIC DIMENSIONS ESTABLISHED BY CUSTOMER.
- 1.05 mm DIAMETER HOLES ARE CHASSIS GROUND (69 HOLES).

REVISIONS

REV.	ECN	DESCRIPTION	DATE	APPROVED
A		PROPOSAL	MAY 25/11	J.SI
B		ADD DIMENSION	JUN 30/11	J.SI
C		MODIFY THE PCB LAYOUT	JUL 17/11	J.SI

THIS AREA DENOTES COMPONENT KEEP-OUT (TRACES ALLOWED)

A

B

C

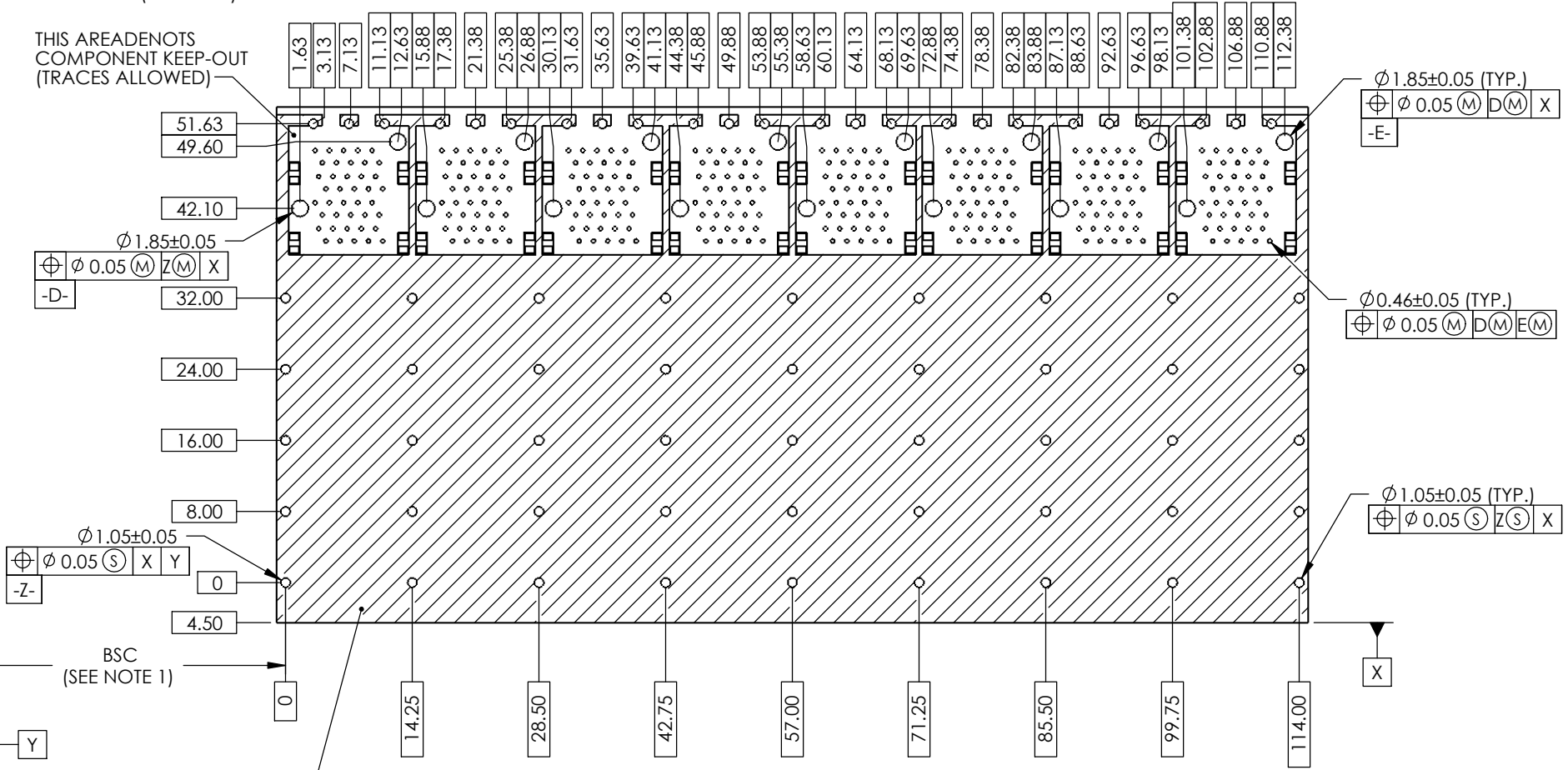
D

A

B

C

D



CROSS-HATCHED AREA DENOTES COMPONENT AND TRACE KEEP-OUT (EXCEPT CHASSIS GROUND)

2X8 PCB LAYOUT

DO NOT SCALE DRAWING

THIS DOCUMENT CONTAINS PROPRIETARY INFORMATION AND SUCH INFORMATION MAY NOT BE DISCLOSED TO OTHERS FOR ANY PURPOSE OR USED FOR MANUFACTURING PURPOSES WITHOUT PERMISSION FROM AMPHENOL CANADA CORP.

UNLESS OTHERWISE SPECIFIED DIMENSIONS ARE IN MILLIMETERS TOLERANCES ARE:		APPROVALS		DATE	
DECIMALS	ANGLES	DRAWN	MIKE.H	MAY 25/11	
X.X ± 0.25	± 1°	DESIGNED			
X.XX ± 0.15		CHECKED	J. SI	MAY 25/10	
MATERIAL AND FINISH	N/A	QA APPD	X	X	
REF.	X	IE APPD	X	X	
CODE IDENT. NO.	03554	DWG APPD			

Amphenol Canada Corp.		
TITLE		
2XN SFP+ EXPRESSPORT™ COMBO WITH LARGE LIGHT PIPE OPTIONS SPRING FINGER EMI		
SIZE	DWG. NO.	REV.
A4	P-UE86-KX627-20XX1	C
SCALE	PROJECT	SHEET
1:1		8 OF 8