

4

3

2

1

THIS DRAWING IS UNPUBLISHED.

RELEASED FOR PUBLICATION

© COPYRIGHT

ALL RIGHTS RESERVED.

LOC DIST

REVISIONS

P	LTR	DESCRIPTION	DATE	DWN	APVD
	B1	ECR-12-013343	25JUL2012	XZ	SX

REPLACED BY OCEAN STYLE APPLICATOR PART NUMBER 2151011-1

FOR REPLACEMENT PARTS FOR APPLICATOR 1528554
REFER TO ADDITIONAL PAGE(S). SPARE PARTS KIT (IF LISTED)
WILL REMAIN AVAILABLE.

THE REPLACEMENT OCEAN STYLE APPLICATOR HAS THE
SAME TERMINATOR/PRESS INTERFACE AS APPLICATOR
1528554

Dimensioning and tolerancing per ASME Y14.5M-2009


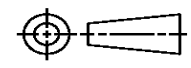
B

A

Dimensioning and tolerancing per ASME Y14.5M-2009

B

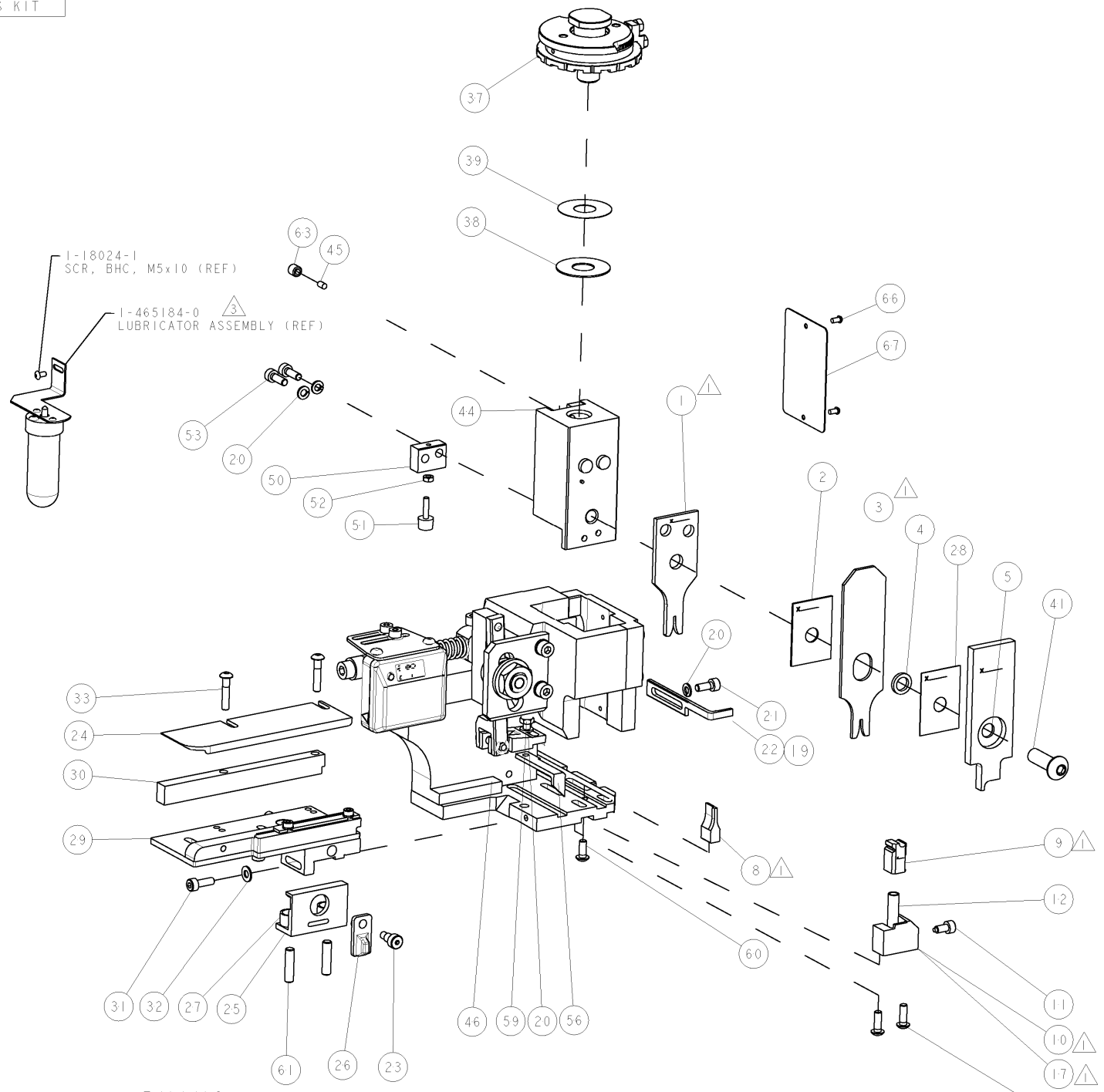
A

THIS DRAWING IS A CONTROLLED DOCUMENT.		DWN X. ZHAO	 TE Connectivity			
DIMENSIONS:		CHK S. XI				
		APVD S. XI	NAME			
TOLERANCES UNLESS OTHERWISE SPECIFIED: 0 PLC ± 1 PLC ± 2 PLC ± 3 PLC ± 4 PLC ± ANGLES ±		PRODUCT SPEC	FINE ADJUST SIDE FEED HDI APPLICATOR			
MATERIAL		APPLICATION SPEC	SIZE	CAGE CODE	DRAWING NO	RESTRICTED TO
FINISH		WEIGHT	A3		©- 1528554	
			SCALE	SHEET 1 OF 2	REV B1	

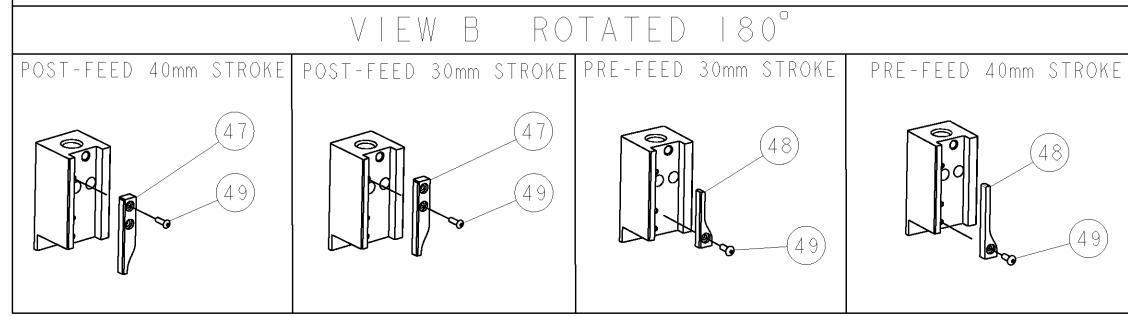
Dimensioning and tolerancing per ASME Y14.5M-2009

PART NUMBER	REV	TERMINATOR	FEED TYPE	DESCRIPTION
1528554-1	B	LEADMAKER	MECH POST FEED	CUTS CARRIER
1528554-2	B	BENCH	MECH PRE FEED	CUTS CARRIER
1528554-6	B	LEADMAKER	MECH POST FEED	CONTINUOUS CARRIER
7-1528554-1	B	LEADMAKER	MECH POST FEED	-1 AND SPARE PARTS
7-1528554-2	B	BENCH	MECH PRE FEED	-2 AND SPARE PARTS
7-1528554-6	B	LEADMAKER	MECH POST FEED	-6 AND SPARE PARTS
7-1528554-7	A	-	-	SPARE PARTS KIT

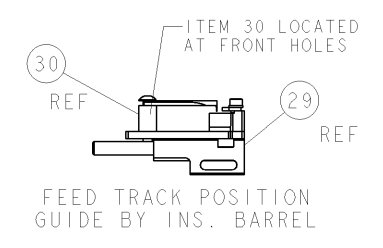
CRIMP DATA		TYCO TERMINAL	TYCO CRIMP SPEC
TERMINAL NAME: RECEPTACLE, CST-100			
CRIMP	SIZE	TYPE	RANGE
WIRE	1.07 [.042 IN]	F	26-22 AWG or 0.12-0.40mm ²
INSUL	1.78 [.070 IN]	F	0.89-1.65 [.035-.065 IN]
WIRE STRIP LENGTH 2.54-3.18 [.100-.125 IN]		APPL INSTRUCTIONS 408-8322 & 408-8490	
TERMINAL APPL SPEC	114-16019(A) 114-13036(B)		FEED 9.14 [.360 IN]
TERMINALS APPLIED			
770601(A)	-	-	-
1375819(B)	-	-	-
WIRE SIZE	CRIMP HEIGHT	REF SETTING	
22 AWG	0.86 ±0.05 [.034 ±.002 IN]	C 2	
24 AWG or 0.22mm ²	0.81 ±0.05 [.032 ±.002 IN]	C 5	
26 AWG	0.76 ±0.05 [.030 ±.002 IN]	C 8	



*** WARNING**
ON INSTALLATION, SET WIRE DISC TO LARGEST WIRE SIZE SETTING. USE OF SETTINGS BELOW MIN. REQUIRED CRIMP HEIGHT SETTING WILL CAUSE DAMAGE TO CRIMP TOOLING.



-77	-76	-72	-71	-6	-2	-1	PART NO	DESCRIPTION	ITEM NO
-	-	-	-	-	-	-	-	-	84
-	-	-	-	-	-	-	-	-	83
-	-	-	-	-	-	-	-	-	82
-	-	-	-	-	-	-	-	-	81
-	-	-	-	-	-	-	-	-	80
-	-	-	-	-	-	-	-	-	79
-	-	-	-	-	-	-	-	-	78
-	-	-	-	-	-	-	-	-	77
-	-	-	-	-	-	-	-	-	76
-	-	-	-	-	-	-	-	-	75
-	-	-	-	-	-	-	-	-	74



LOC	DIST	REV	DATE	BY	APPV
A	66		03-Aug-05	LJL	FB
B			21MAR2007	MY	GB

REV	DATE	DESCRIPTION	ITEM NO						
-	-	-	73						
-	-	-	72						
-	-	-	71						
-	-	-	70						
-	-	-	69						
-	-	-	68						
-	-	-	67						
-	-	-	66						
-	-	-	65						
-	-	-	64						
-	-	-	63						
-	-	-	62						
-	-	-	61						
-	-	-	60						
-	-	-	59						
-	-	-	58						
-	-	-	57						
-	-	-	56						
-	-	-	55						
-	-	-	54						
-	-	-	53						
-	-	-	52						
-	-	-	51						
-	-	-	50						
-	-	-	49						
-	-	-	48						
-	-	-	47						
-	-	-	46						
-	-	-	45						
-	-	-	44						
-	-	-	43						
-	-	-	42						
-	-	-	41						
-	-	-	40						
-	-	-	39						
-	-	-	38						
-	-	-	37						
-	-	-	36						
-	-	-	35						
-	-	-	34						
-	-	-	33						
-	-	-	32						
-	-	-	31						
-	-	-	30						
-	-	-	29						
-	-	-	28						
-	-	-	27						
-	-	-	26						
-	-	-	25						
-	-	-	24						
-	-	-	23						
-	-	-	22						
-	-	-	21						
-	-	-	20						
-	-	-	19						
-	-	-	18						
-	-	-	17						
-	-	-	16						
-	-	-	15						
-	-	-	14						
-	-	-	13						
-	-	-	12						
-	-	-	11						
-	-	-	10						
-	-	-	9						
-	-	-	8						
-	-	-	7						
-	-	-	6						
-	-	-	5						
-	-	-	4						
-	-	-	3						
-	-	-	2						
-	-	-	1						
-77	-76	-72	-71	-6	-2	-1	PART NO	DESCRIPTION	ITEM NO

DIMENSIONS: mm [IN] 0 PLC ± 1 PLC ± 2 PLC ± 3 PLC ± 4 PLC ± 5 PLC ± 6 PLC ± 7 PLC ± 8 PLC ± 9 PLC ± 10 PLC ± 11 PLC ± 12 PLC ± 13 PLC ± 14 PLC ± 15 PLC ± 16 PLC ± 17 PLC ± 18 PLC ± 19 PLC ± 20 PLC ± 21 PLC ± 22 PLC ± 23 PLC ± 24 PLC ± 25 PLC ± 26 PLC ± 27 PLC ± 28 PLC ± 29 PLC ± 30 PLC ± 31 PLC ± 32 PLC ± 33 PLC ± 34 PLC ± 35 PLC ± 36 PLC ± 37 PLC ± 38 PLC ± 39 PLC ± 40 PLC ± 41 PLC ± 42 PLC ± 43 PLC ± 44 PLC ± 45 PLC ± 46 PLC ± 47 PLC ± 48 PLC ± 49 PLC ± 50 PLC ± 51 PLC ± 52 PLC ± 53 PLC ± 54 PLC ± 55 PLC ± 56 PLC ± 57 PLC ± 58 PLC ± 59 PLC ± 60 PLC ± 61 PLC ± 62 PLC ± 63 PLC ± 64 PLC ± 65 PLC ± 66 PLC ± 67 PLC ± 68 PLC ± 69 PLC ± 70 PLC ± 71 PLC ± 72 PLC ± 73 PLC ± 74 PLC ± 75 PLC ± 76 PLC ± 77 PLC ± 78 PLC ± 79 PLC ± 80 PLC ± 81 PLC ± 82 PLC ± 83 PLC ± 84 PLC ±	TOLERANCES UNLESS OTHERWISE SPECIFIED: 0 PLC ± 1 PLC ± 2 PLC ± 3 PLC ± 4 PLC ± 5 PLC ± 6 PLC ± 7 PLC ± 8 PLC ± 9 PLC ± 10 PLC ± 11 PLC ± 12 PLC ± 13 PLC ± 14 PLC ± 15 PLC ± 16 PLC ± 17 PLC ± 18 PLC ± 19 PLC ± 20 PLC ± 21 PLC ± 22 PLC ± 23 PLC ± 24 PLC ± 25 PLC ± 26 PLC ± 27 PLC ± 28 PLC ± 29 PLC ± 30 PLC ± 31 PLC ± 32 PLC ± 33 PLC ± 34 PLC ± 35 PLC ± 36 PLC ± 37 PLC ± 38 PLC ± 39 PLC ± 40 PLC ± 41 PLC ± 42 PLC ± 43 PLC ± 44 PLC ± 45 PLC ± 46 PLC ± 47 PLC ± 48 PLC ± 49 PLC ± 50 PLC ± 51 PLC ± 52 PLC ± 53 PLC ± 54 PLC ± 55 PLC ± 56 PLC ± 57 PLC ± 58 PLC ± 59 PLC ± 60 PLC ± 61 PLC ± 62 PLC ± 63 PLC ± 64 PLC ± 65 PLC ± 66 PLC ± 67 PLC ± 68 PLC ± 69 PLC ± 70 PLC ± 71 PLC ± 72 PLC ± 73 PLC ± 74 PLC ± 75 PLC ± 76 PLC ± 77 PLC ± 78 PLC ± 79 PLC ± 80 PLC ± 81 PLC ± 82 PLC ± 83 PLC ± 84 PLC ±	DWG: M. CLIFFORD 27JUN2005 CHK: APVD: F. BACKHURST 27JUN2005 PRODUCT SPEC: APPLICATION SPEC: See Table MATERIAL: FINISH: WEIGHT: CUSTOMER DRAWING	tyco Tyco Electronics Harrisburg, PA 17105-3608 FINE ADJUST SIDE FEED HDI APPLICATOR SIZE: A CAGE CODE: 00779 DRAWING NO: 1528554 SCALE: 3:5 SHEET: 2 OF 2 REV: B
--	--	--	--