

**Technical specification:**

|                                       |                           |
|---------------------------------------|---------------------------|
| Rated voltage:<br>IEC 61076-2-101     | 4pos 5pos<br>250 V 60 V   |
| Current rating:<br>IEC 61076-2-101    | 4 A at 40°C               |
| Insulation resistance:<br>IEC 60512-2 | >=100 MΩ                  |
| Pollution degree:<br>IEC 60664-1      | 3/2                       |
| Degree of protection:<br>IEC 60529    | IP 67, in mated condition |
| Temperature range:<br>IEC 60664-1     | -30°C ... +85°C           |
| Mating cycles:<br>IEC 60512-9a        | >=100                     |

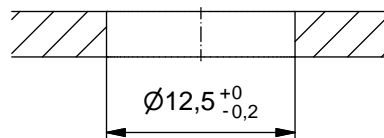
**Materials:**

|                  |                     |
|------------------|---------------------|
| Contact:         | CuZn                |
| Contact plating: | Nickel, gold plated |
| Contact carrier: | PA 6.6, UL 94       |
| Sealing:         | FPM                 |
| Socket housing:  | CuZn, nickel plated |
| Shroud:          | Spring steel        |
| -plating:        | Tin plated          |

**Installation specification:**

|                          |   |
|--------------------------|---|
| recommended torque:      | 0,8-1 Nm  |
| Conec installation tool: | Torque wrench:<br>36-000200<br>Insert across flats 15:<br>36-000320 |

feedthrough



| Part no: | Description:           | Pos | Note:       |
|----------|------------------------|-----|-------------|
| 43-01170 | SAL - 12 - FKH4 - X10  | 4   |             |
| 43-01171 | SAL - 12S - FKH4 - X10 | 4   | with shroud |
| 43-01172 | SAL - 12 - FKH5 - X10  | 5   |             |
| 43-01173 | SAL - 12S - FKH5 - X10 | 5   | with shroud |

|   |                                     |   |  |   |       |      |      |       |          |       |       |          |            |
|---|-------------------------------------|---|--|---|-------|------|------|-------|----------|-------|-------|----------|------------|
| DO NOT ALTER CAD DRAWING BY HAND  | Directive 2002/95/EC RoHS compliant | Index: b 23.03.11 fro Ä3914<br>Data sheet revised, technical specification changed              | dim. in mm   | title:<br><b>Female socket M12x1 axial, backmounting, dip solder, X10</b> |       |      |      |       |          |       |       |          |            |
|   |                                     |   | <table border="1" style="width: 100%; border-collapse: collapse;"> <tr> <td style="width: 30px;"></td> <td style="width: 100px;">date</td> <td style="width: 100px;">name</td> </tr> <tr> <td>drawn</td> <td>10.10.07</td> <td>Fromm</td> </tr> <tr> <td>appd.</td> <td>18.10.07</td> <td>W. Schmidt</td> </tr> </table> |   |       | date | name | drawn | 10.10.07 | Fromm | appd. | 18.10.07 | W. Schmidt |
|   |                                     |   | date   |   | name  |      |      |       |          |       |       |          |            |
|   |                                     | drawn   | 10.10.07   |   | Fromm |      |      |       |          |       |       |          |            |
| appd.   | 18.10.07                            | W. Schmidt  |  |   |       |      |      |       |          |       |       |          |            |
| THIS DRAWING MAY NOT BE COPIED OR REPRODUCED IN ANY WAY, AND MAY NOT BE PASSED ON TO A THIRD PARTY WITHOUT WRITTEN PERMISSION.<br>OWNERSHIP AND COPYRIGHT OF CONEC GmbH |                                     | dwg no:<br><div style="text-align: center; font-size: large; font-weight: bold;">43K1A499</div> |  |   |       |      |      |       |          |       |       |          |            |
|   |                                     | part no:  |  |   |       |      |      |       |          |       |       |          |            |