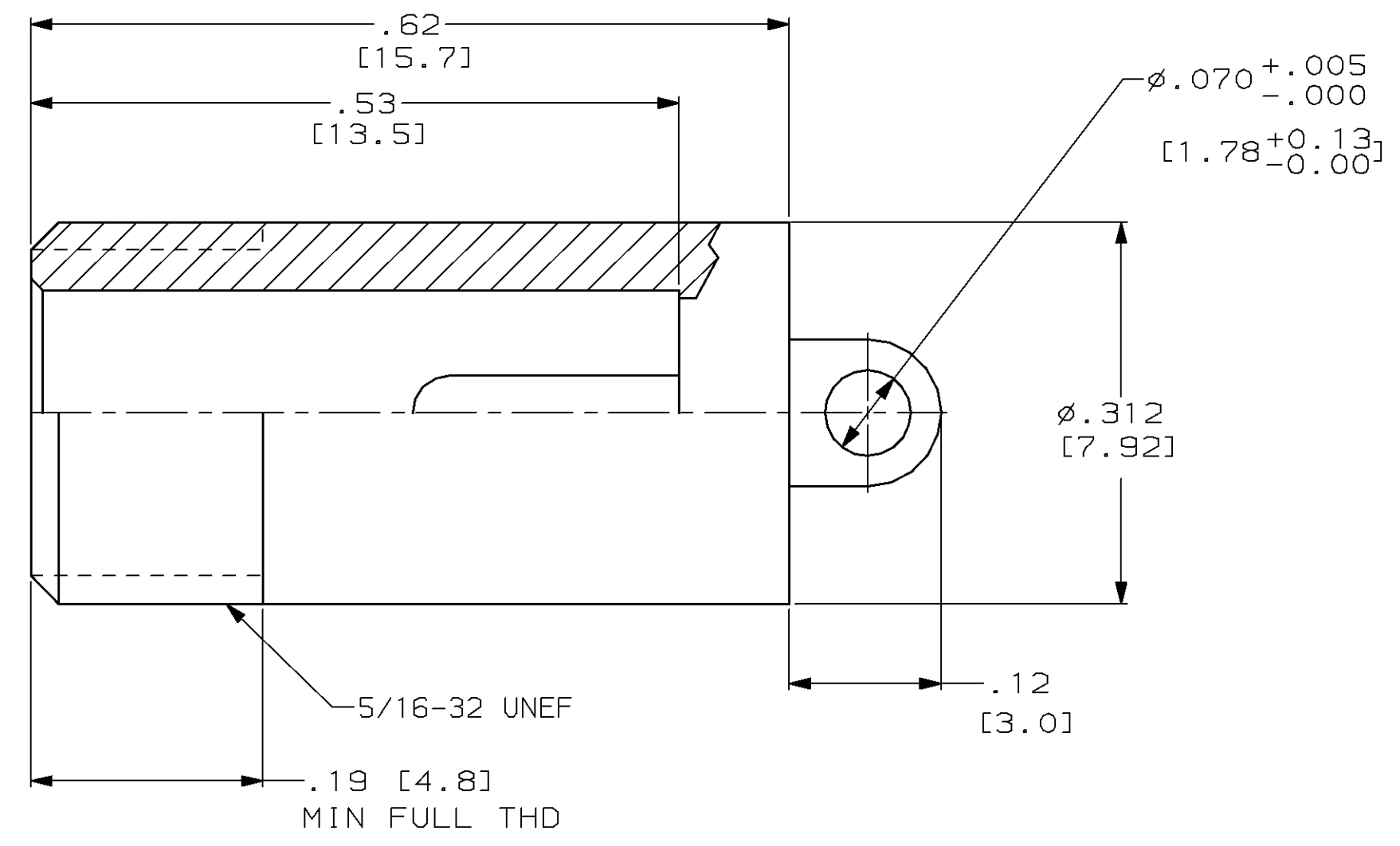
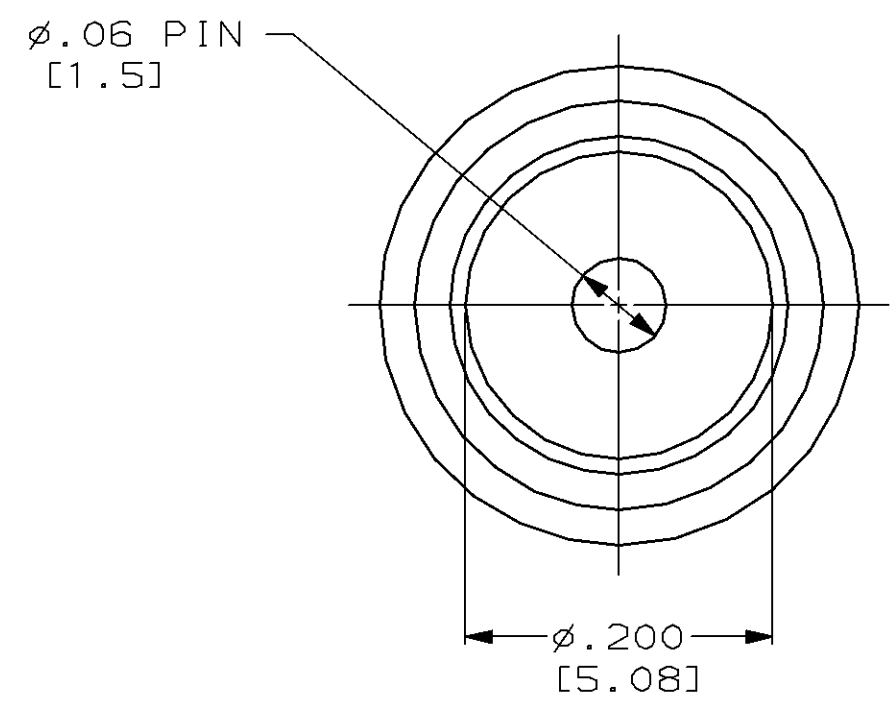


THIS DRAWING IS UNPUBLISHED. RELEASED FOR PUBLICATION, 19 .  
 © COPYRIGHT 19 BY AMP INCORPORATED. ALL INTERNATIONAL RIGHTS RESERVED.

PROD CODE	LOC	DIST	P	F	ZONE	LTR	DESCRIPTION	DATE	APPD
4087	DF	SO				C	REV & REDRAWN; 0600-5601-96 CT	8-96	SG



- RECEPTACLE TO MATE WITH AMP LGH-1/2 LEAD ASSY.
- MARKED PER MIL-STD-130.
- 100% SCREENING INSPECTION IS REQUIRED:
  - A. VISUAL
  - B. MECHANICAL
  - C. INSULATION RESISTANCE: 10 GIGA OHMS (MIN) @ 300 VDC
  - D. DIELECTRIC WITHSTANDING VOLTAGE: 15 KVDC FOR 3 MIN.
  - E. SUPPLY DATA

4	.000150 MIN TIN [0.00381]	864522-1
REMARKS	TERMINAL PLATING	PART NO.

DO NOT SCALE PRINT. UNLESS SPECIFIED DIMENSIONS IN INCHES [mm] TOLERANCES ON : 2 PLC DEC ± .02 [0.5] 3 PLC DEC ± .005 [0.13] ANGLES ± -	DR 8-27-96 C.C. THOMAS	AMP Incorporated Harrisburg, PA 17105-3608	
	CHK 9-10-96 S. GLATFELTER		
MATERIAL EPOXY MLDG. CMPD.	APPD 9-10-96 S. GLATFELTER	NAME RECEPTACLE, LGH-1/2	
COLOR BLACK	RLSE 9-10-96 C.C. THOMAS	SIZE C	CAGE CODE 00779
	PRODUCT SPEC -	DRAWING NO C=864522	
	APPLICATION SPEC -	SCALE 8:1	SHEET 1 OF 1
	WEIGHT -		

THIS DRAWING IS A CONTROLLED DOCUMENT FOR AMP INCORPORATED. IT IS SUBJECT TO CHANGE AND THE CONTROLLING ENGINEERING ORGANIZATION SHOULD BE CONTACTED FOR THE LATEST REVISION.