

# Splicing Connectors

- Ideal for easy joining of multiple datacom or telco wires
- B-Connectors are available with and without gel sealant



Fig. 1



Fig. 2



Fig. 3



Fig. 4

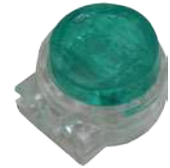


Fig. 5

Item #	Figure	Color	Description
TBN-1001	FIG. 1	WHITE	100 PK, BEANNIE CONNECTORS
TBN-1011	FIG. 2	BLUE	100 PK, BEANNIE CONNECTORS, GEL FILLED
TBN-1002	FIG. 3	RED	100 PK, UR CONNECTORS
TBN-1003	FIG. 4	YELLOW	100 PK, UY CONNECTORS
TBN-1004	FIG. 5	GREEN	100 PK, UG CONNECTORS



## RJ45 Strain Relief Boots

- Designed for termination of RJ45 modular plugs
- Molded rubber for better latching clip protection
- Works with both UTP and STP connectors

Item #	Color	Description
NMB-1001	BLACK	RJ45 STRAIN RELIEF BOOTS
NMB-1002	BLUE	RJ45 STRAIN RELIEF BOOTS
NMB-1003	RED	RJ45 STRAIN RELIEF BOOTS
NMB-1005	YELLOW	RJ45 STRAIN RELIEF BOOTS
NMB-1006	GREEN	RJ45 STRAIN RELIEF BOOTS
NMB-1008	WHITE	RJ45 STRAIN RELIEF BOOTS
NMB-1009	GRAY	RJ45 STRAIN RELIEF BOOTS
NMB-1010	ORANGE	RJ45 STRAIN RELIEF BOOTS



Install: Snap clip in place over broken mod plug, and slide forward until it snaps in next to tab base.

## RJ45 Plug Saver Repair Clips

- Designed to fix RJ45 patch cords
- 25 clips per package quantity
- Saves damaged patch cords

Item #	Color	Description
NMS-8000	CLEAR	25 RJ45 PLUG SAVER REPAIR CLIPS
NMS-8001	BLACK	25 RJ45 PLUG SAVER REPAIR CLIPS
NMS-8002	BLUE	25 RJ45 PLUG SAVER REPAIR CLIPS
NMS-8003	RED	25 RJ45 PLUG SAVER REPAIR CLIPS
NMS-8005	YELLOW	25 RJ45 PLUG SAVER REPAIR CLIPS
NMS-8006	GREEN	25 RJ45 PLUG SAVER REPAIR CLIPS



## Silver Satin Modular Cables

- RJ-11 6p4c Connector
- Crosswired for telephone use

Color	7 ft.	15 ft.	25 ft.
SILVER	NCO-4107	NCO-4115	NCO-4125



## Coiled Handset Cords

- Long-lasting coil memory
- Stranded cable for more flexibility

Color	15 ft.	25 ft.
BLACK	NCO-2015	NCO-2025
WHITE	NCO-2415	NCO-2425

# Modular Plugs

- Quest modular plugs are constructed with 15u or 50u gold contacts
- Available in Cat3, Cat5E, Cat6 and Cat6A versions
- Available in 4p4c, 4p6c, 6p6c, 8p8c and 10p10c versions solid or stranded
- Constructed of UL94V PVC



Fig. 1



Fig. 2



Fig. 3



Fig. 4



Fig. 5



Fig. 6



Fig. 7



Fig. 8



Fig. 9



Item #	Figure	RJ9 (4p4c)	RJ11 (6p4c)	RJ12 (6p6c)	RJ45 (8p8c)	RJ45 (10p10c)	CAT3	CAT5E	CAT6	CAT6A	Slaggered Wire Guides	Wire Guide Load Bar	Stranded Conductor	Solid Conductor	Shielded	Flat Jacket	Round Jacket	Gold Plating (u")	Blades	Recommended Crimp Tool
NMP-9000	Fig. 1	X					X				X				X		X	2	15	TEL-6020
NMP-4111	Fig. 2		X				X				X				X		X	2	15	TEL-6001
NMP-4221	Fig. 2			X			X				X			X				2	15	TEL-6001
NMP-4225	Fig. 2			X			X				X			X	X			3	50	TEL-6001
NMP-6111	Fig. 3				X		X				X				X		X	2	15	TEL-6001
NMP-6221	Fig. 3				X		X				X				X			2	15	TEL-6001
NMP-6225	Fig. 3				X		X				X				X			2	50	TEL-6001
NMP-8111	Fig. 4					X		X			X				X		X	2	15	TEL-6001
NMP-8215	Fig. 4					X		X			X				X			2	50	TEL-6001
NMP-8225	Fig. 4					X		X			X				X			2	50	TEL-6001
NMP-8325	Fig. 4					X		X			X				X	X		3	50	TEL-6001
NMP-8425	Fig. 5					X		X			X					X		2	50	TEL-6001
NMP-8510	Fig. 6						X	X			X							2	15	TEL-6020
NMP-8625	Fig. 7					X		X				X						2	50	TEL-6001
NMP-8725	Fig. 7					X			X			X	X	X	X			3	50	TEL-6001
NMP-8825	Fig. 8					X			X			X	X	X	X	X		3	50	TEL-6001
NMP-8925	Fig. 9					X				X		X	X	X	X			3	50	TEL-6001

### Physical Characteristics

Housing: Polycarbonate, UL94V-2  
 Color: Transparent  
 Contact Blade : Phosphor Bronze  
 Conductor : Stranded & solid wire, 24-26 AWG  
 Gold Plating: 15u" or 50u"

### Electrical & Mechanical Specifications

UL Applications: 250 Volts AC (max.) at 2 Amps  
 Dielectric Strength: 500 Volts AC  
 Insulation Resistance: 100 MΩ.  
 Termination: Resistance 20mΩ (max.)  
 Cable-to-Plug Tensile Strength: 19.6N/PCS min.  
 Durability: 200 insertion cycles



Dual Blade (2)



Tri-Blade (3)

## 110 Cross-Connect Wiring Blocks

Quest offers 110 style wiring blocks for telephone installations and wiring cross-connects.

- Used for high-speed voice and data transfers
- Wiring blocks include mounting legs
- Designed for crossconnecting of building wiring
- Accepts 22AWG to 26AWG wire
- Includes labeling index strips
- Available in wall and rack mount versions

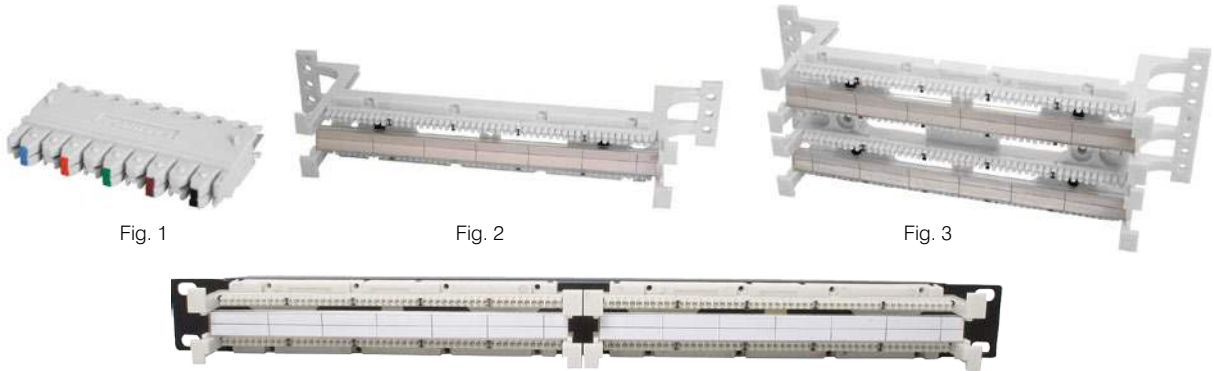


Fig. 1

Fig. 2

Fig. 3

Fig. 4



Item #	Figure	Description
NCB-1005	FIG. 1	5 PAIRS, 110 CONNECTING BLOCK
NCB-1050	FIG. 2	50 PAIRS, 110 WIRING BLOCK WITH LEGS
NCB-1100	FIG. 3	100 PAIRS, 110 WIRING BLOCK WITH LEGS
NCP-100	FIG. 4	100 PAIRS, 110 BLOCK 19 IN. RACK MOUNT PANEL

## 66 Cross-Connect Wiring Blocks

Quest offers 66 style wiring blocks for telephone installations and wiring cross-connects.

- Used for high-speed voice and data transfers
- Designed for crossconnecting of building wiring
- Accepts 22AWG to 26AWG wire
- Easy to terminate 66 blocks

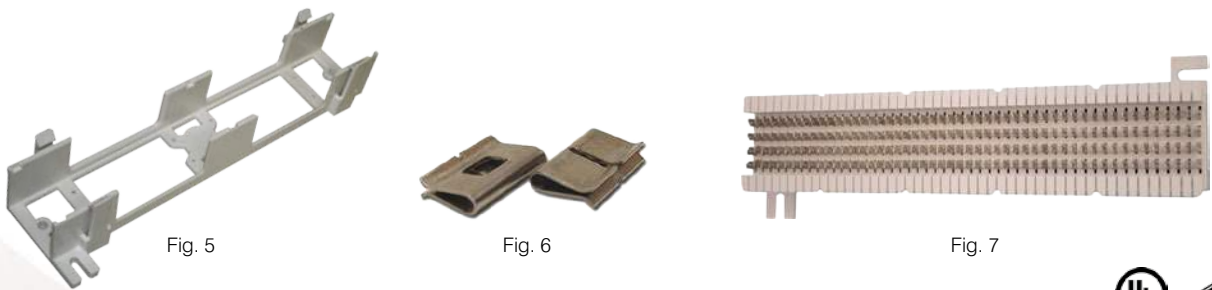


Fig. 5

Fig. 6

Fig. 7



Item #	Figure	Description
NCB-6000	FIG. 5	89D BRACKET FOR 66 BLOCK OR 12 PORT MINI PANEL
NCB-6010	FIG. 6	66 BLOCK BRIDGING CLIPS
NCB-6650	FIG. 7	50 PAIRS, 66 BLOCK W/O MOUNTING LEGS

## Telephone Surface Mount Boxes

- Designed with 6p4c RJ11 jacks
- Wired to USOC telephone wiring standards
- Low profile design for better appearance



Item #	Figure	Color	Description
NTB-1401	FIG. 1	IVORY	TELEPHONE SMB, SINGLE RJ11, 6P4C LOADED
NTB-1402	FIG. 1	WHITE	TELEPHONE SMB, SINGLE RJ11, 6P4C LOADED
NTB-1891	FIG. 1	IVORY	RJ31X SMB, SINGLE RJ45, 8P8C LOADED
NTB-3402	FIG. 2	WHITE	VERTICAL SMB, SINGLE RJ11, 6P4C LOADED



Fig. 1



Fig. 2

## Telephone Duplex Adapters

- Designed with 6p4c RJ11 jacks
- Wired to USOC telephone wiring standards



Item #	Figure	Color	Description
NTC-2421	FIG. 3	IVORY	DUPLEX ADAPTER, 6P4C, STRAIGHT-WIRED
NTC-2422	FIG. 3	WHITE	DUPLEX ADAPTER, 6P4C, STRAIGHT-WIRED



Fig. 3

## Telephone Inline Couplers

- Designed for joining telephones patch cables
- Cross-wired for telephone applications



Item #	Figure	Color	Description
NTC-1421	FIG. 4	IVORY	TELEPHONE INLINE COUPLERS, 6P4C
NTC-1422	FIG. 4	WHITE	TELEPHONE INLINE COUPLERS, 6P4C



Fig. 4

## Telephone Wall Plates

- Designed with 6p4c RJ11 jacks
- Wired to USOC telephone wiring standards
- Available with RJ11 and TV F-81 connectors
- Smooth flush finish



Item #	Figure	Color	Description
NTP-1442	FIG. 5	WHITE	DUAL RJ11 WALL PLATE, 6P4C
NTP-2402	FIG. 5	WHITE	SINGLE RJ11 WALL PLATE, 6P4C
NTP-1901	FIG. 6	IVORY	RJ11 & F-81 COMBO WALL PLATE, 6P4C
NTP-1902	FIG. 6	WHITE	RJ11 & F-81 COMBO WALL PLATE, 6P4C
NTP-4402	FIG. 7	WHITE	KITCHEN MOUNT SINGLE RJ11 WALLPLATE, 6P4C



Fig. 5



Fig. 6



Fig. 7

STRUCTURED CABLING

FIBER OPTIC

WIRE & CABLE

RF COAXIAL

HDMI & AUDIO/VIDEO

WIRE MANAGEMENT

INSTALLATION TOOLS



### Fiber Optic Keystone Inserts

- Female to Female
- For multi-mode terminations
- Slim-style keystone insert

Item #	Color	Description
NKJ-3108	WHITE	ST FIBER OPTIC KEYSTONE INSERT
NKJ-3208		SC FIBER OPTIC KEYSTONE INSERT
NKJ-3308		LC FIBER OPTIC KEYSTONE INSERT

\*Other versions available



### Blank Keystone Inserts

- Universal blank keystone fillers

Item #	Color	Description
NIN-1100	GRAY	BLANK KEYSTONE WALLPLATE INSERT
NIN-1101	BLACK	BLANK KEYSTONE WALLPLATE INSERT
NIN-1102	LT. ALMOND	BLANK KEYSTONE WALLPLATE INSERT
NIN-1103	BROWN	BLANK KEYSTONE WALLPLATE INSERT
NIN-1107	IVORY	BLANK KEYSTONE WALLPLATE INSERT
NIN-1108	WHITE	BLANK KEYSTONE WALLPLATE INSERT
NIN-1109	ALMOND	BLANK KEYSTONE WALLPLATE INSERT



### BNC Keystone Inserts

- Female to Female
- BNC 50 Ohm

Item #	Color	Description
NIN-1308	WHITE	50 OHM BNC KEYSTONE INSERT



### F-81 Keystone Inserts

- Female to Female
- F-81 75 Ohm
- Slim-style keystone insert

Item #	Color	Description
NIN-1208	WHITE	F-81 KEYSTONE INSERT



### RCA Keystone Inserts

- Female to Female
- RCA 75 Ohm
- Slim-style keystone insert

Item #	Insulator Color	Description
NIN-1401	RED	RCA KEYSTONE INSERT, WHITE
NIN-1402	YELLOW	RCA KEYSTONE INSERT, WHITE
NIN-1403	WHITE	RCA KEYSTONE INSERT, WHITE
NIN-1404	BLUE	RCA KEYSTONE INSERT, WHITE
NIN-1405	GREEN	RCA KEYSTONE INSERT, WHITE



### HDMI Keystone Inserts

- HDMI Female to Female
- Slim-style keystone insert



Item #	Color	Description
HDI-9510	WHITE	HDMI KEYSTONE COUPLER INSERT



Fig. 1



Fig. 2

## Punch Down 110 IDC Couplers

- 110 IDC punchdown termination
- Mounting hardware is included
- Maintains cabling performance



Item #	Figure	Description
NCB-5008	FIG. 1	CAT5E 110 IDC COUPLER
NCB-6008	FIG. 2	CAT6 110 IDC COUPLER



Fig. 1



Fig. 2

## Tooless 110 IDC Couplers

- Tooless 110 IDC termination
- Unique leverage caps terminate 2 pairs at a time
- Mounting hardware is included
- Self contained IDC clips



Item #	Figure	Description
NCB-5018	FIG. 1	CAT5E TOOLESS 110 IDC COUPLER
NCB-6018	FIG. 2	CAT6 TOOLESS 110 IDC COUPLER



## CAT6A Keystone Couplers

- Designed for joining of patch cables
- Dual RJ45 wired straight thru for data



Item #	Color	Description
NKJ-6302	WHITE	CAT6A INLINE KEYSTONE COUPLER



Fig. 1



Fig. 2



Fig. 3

## CAT6 Inline Couplers

- Designed for joining of Cat6 patch cables
- Dual RJ45 wired straight thru for data



Item #	Figure	Description
NKJ-6002	FIG. 1	CAT6 INLINE KEYSTONE COUPLER
NKJ-6008	FIG. 2	CAT6 INLINE COUPLER
NKJ-6018	FIG. 3	CAT6 90 DEGREE INLINE COUPLER



Fig. 1



Fig. 2

## CAT5E Inline Couplers

- Designed for joining of Cat5E patch cables
- Dual RJ45 wired straight thru for data



Item #	Figure	Description
NKJ-5001	FIG. 1	CAT5E INLINE COUPLER
NKJ-5002	FIG. 2	CAT5E INLINE KEYSTONE COUPLER



## CAT3 Inline Couplers

- Designed for joining patch cables
- Wired straight thru for data



Item #	Color	Description
NTC-0821	IVORY	CAT3 INLINE COUPLER, 6P4C
NTC-0822	WHITE	CAT3 INLINE COUPLER, 6P4C

## Wall Plates w/ Labeling Windows

- Ideal for all standard and slim style keystone jacks
- Designed with clear label windows and icon slots (Except the horizontal wall plates)
- Vertical, horizontal and angled wallplates are available
- ABS Construction
- Mounting Screws Included

### Vertical



Fig. 1

Fig. 2

### Horizontal

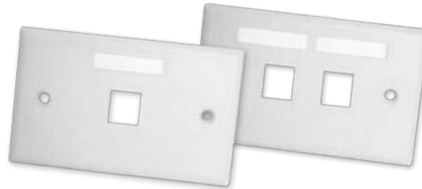


Fig. 3

Fig. 4

### Angled



Fig. 5

Fig. 6



Item #	Figure	Color	Description
NFP-2018	FIG. 1	WHITE	1 PORT, KEYSTONE VERTICAL WALL PLATE W/ LABELING WINDOWS AND ICON SLOTS
NFP-2028	FIG. 2	WHITE	2 PORT, KEYSTONE VERTICAL WALL PLATE W/ LABELING WINDOWS AND ICON SLOTS
NFP-6108	FIG. 3	WHITE	1 PORT, KEYSTONE HORIZONTAL WALL PLATE W/ LABELING WINDOWS
NFP-6208	FIG. 4	WHITE	2 PORT, KEYSTONE HORIZONTAL WALL PLATE W/ LABELING WINDOWS
NFP-3028	FIG. 5	WHITE	2 PORT, KEYSTONE ANGLED WALL PLATE W/ LABELING WINDOWS AND ICON SLOTS
NFP-3048	FIG. 6	WHITE	4 PORT, KEYSTONE ANGLED WALL PLATE W/ LABELING WINDOWS AND ICON SLOTS



Fig. 7



Fig. 8

Fig. 9

## Décor Style Wall Plates

- Multimedia versatility
- Contemporary décor styling
- Available in 1 and 2 port versions
- ABS construction
- Mounting screws included



Item #	Figure	Color	Description
NFP-4018	FIG. 7	WHITE	SINGLE-GANG, DECOR WALL PLATE
NFP-4108	FIG. 8	WHITE	1 PORT, DECOR KEYSTONE INSERT
NFP-4208	FIG. 9	WHITE	2 PORT, DECOR KEYSTONE INSERT

## Low-Volt Drywall Mounting Brackets

- Ideal for use with all A/V, Telecom and Datacom wall plates
- Eliminates the need for electrical boxes
- PVC construction with built-in drywall grips
- Available in single & dual gang



Fig. 10

Fig. 11

Item #	Figure	Color	Description
VHT-8499	FIG. 10	BLACK	LOW-VOLT SINGLE-GANG DRYWALL BRACKET
VHT-8498	FIG. 11	BLACK	LOW-VOLT DUAL-GANG DRYWALL BRACKET

# Keystone Wall Plates

- Ideal for all standard and slim style keystone jacks
- Multimedia versatility
- Available in blank, 1, 2, 3, 4 and 6 port version
- Available in standard size and MIDI Oversized Wall Plates
- ABS construction
- Mounting screws included
- Available in a variety of color options



## Standard Wall Plates (2.75" W x 4.5" H)



Color	Blank	1 Port	2Port	3 Port	4 Port	6 Port
GRAY	NFP-1000	NFP-1010	NFP-1020	NFP-1030	NFP-1040	NFP-1060
BLACK	NFP-1001	NFP-1011	NFP-1021	NFP-1031	NFP-1041	NFP-1061
IVORY	NFP-1007	NFP-1017	NFP-1027	NFP-1037	NFP-1047	NFP-1067
WHITE	NFP-1008	NFP-1018	NFP-1028	NFP-1038	NFP-1048	NFP-1068
ALMOND	NFP-1009	NFP-1019	NFP-1029	NFP-1039	NFP-1049	NFP-1069
LT. ALMOND	NFP-1002	NFP-1012	NFP-1022	NFP-1032	NFP-1042	NFP-1062
BROWN	NFP-1003	NFP-1013	NFP-1023	NFP-1033	NFP-1043	NFP-1063

## MIDI Oversized Wall Plates (3.1" W x 4.85" H)



Color	Blank	1 Port	2 Port	3 Port	4 Port	6 Port
GRAY	NFP-5000	NFP-5010	NFP-5020	NFP-5030	NFP-5040	NFP-5060
BLACK	NFP-5001	NFP-5011	NFP-5021	NFP-5031	NFP-5041	NFP-5061
IVORY	NFP-5007	NFP-5017	NFP-5027	NFP-5037	NFP-5047	NFP-5067
WHITE	NFP-5008	NFP-5018	NFP-5028	NFP-5038	NFP-5048	NFP-5068
ALMOND	NFP-5009	NFP-5019	NFP-5029	NFP-5039	NFP-5049	NFP-5069
LT. ALMOND	NFP-5002	NFP-5012	NFP-5022	NFP-5032	NFP-5042	NFP-5062
BROWN	NFP-5003	NFP-5013	NFP-5023	NFP-5033	NFP-5043	NFP-5063



## Unloaded Surface Mount Boxes

In addition to offering loaded PCB style surface mount boxes, Quest also offers a keystone version surface mount box.

- Ideal for mounting on a wall without cutting into the sheetrock
- Designed for use with standard and slim style keystone jacks
- Works well with Premiere WireHider raceway
- Available in 1, 2, 4 and 6 port versions



1 Port, Unloaded Surface Mount Box



2 Port, Unloaded Surface Mount Box



4 Port, Unloaded Surface Mount Box



6 Port, Unloaded Surface Mount Box



Item #	Color	Description
NSB-5210	WHITE	1 PORT, UNLOADED SURFACE MOUNT BOX
NSB-5211	IVORY	1 PORT, UNLOADED SURFACE MOUNT BOX
NSB-5220	WHITE	2 PORT, UNLOADED SURFACE MOUNT BOX
NSB-5221	IVORY	2 PORT, UNLOADED SURFACE MOUNT BOX
NSB-5240	WHITE	4 PORT, UNLOADED SURFACE MOUNT BOX
NSB-5241	IVORY	4 PORT, UNLOADED SURFACE MOUNT BOX
NSB-5260	WHITE	6 PORT, UNLOADED SURFACE MOUNT BOX

## Wall Plate Surface Mount Boxes

- Ideal for mounting without cutting into the sheetrock
- 2" box allows for wider bend radius for thicker cable



Item #	Color	Description
NFP-3000	WHITE	1½" DEEP, WALL PLATE SURFACE MOUNT BOX
NFP-3005	WHITE	2" DEEP, WALL PLATE SURFACE MOUNT BOX

## Unloaded High Density Staggered UTP Patch Panels

Quest high-density staggered keystone patch panels are sold unloaded and are designed to fit standard and slim-style keystone jacks without the need for Bezel Inserts.

- Ideal for standard and slim style keystone jacks
- High density for 24 keystone jacks per rack unit
- No bezel required
- Compatible with Cat5E and Cat6 jacks
- Staggered panels are Cat6A optimized
- Staggered panel positions for alien cross-talk mitigation
- Built-in cable mangement



24 Port, Angled and Staggered Unloaded HD Patch Panel



24 Port, Staggered Unloaded HD 19" Patch Panel

**CAT5E CAT6 CAT6A**

Item #	Color	Description
NBP-6224	BLACK	24 PORT, ANGLED AND STAGGERED, UNLOADED HD UTP PATCH PANEL, 1U
NBP-6324	BLACK	24 PORT, STAGGERED, UNLOADED HD 19" UTP PATCH PANEL, 1U

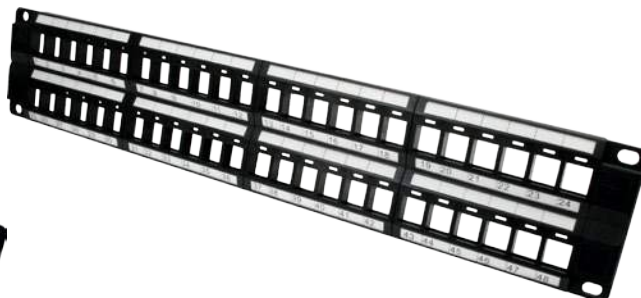
## Unloaded High Density UTP Patch Panels

Quest high-density keystone patch panels are sold unloaded and are designed to fit standard and slim-style keystone jacks without the need for Bezel Inserts.

- Ideal for standard and slim style keystone jacks
- High density for 24 keystone jacks per rack unit
- No bezel required
- Built-in cable mangement



24 Port, Unloaded HD 19" Patch Panel



48 Port, Unloaded HD 19" Patch Panel

**CAT5E CAT6**

Item #	Color	Description
NBP-2224	BLACK	24 PORT, UNLOADED HD 19" UTP PATCH PANEL, 1U
NBP-2248	BLACK	48 PORT, UNLOADED HD 19" UTP PATCH PANEL, 2U

## High-Speed USB 2.0 Cables

Quest offers a wide selection of USB 2.0 version cables with high-speed data transmissions of up to 480 Mbps. These cables are offered in standard male to male cables, as well as male to female extension cables.

- Maximum transfer speed 480 Mbps
- 100 Milliamp charging power
- Backward compatible with USB 1.1



**A-Male to A-Male**



**A-Male to B-Male**



**A-Male to A-Female**

Description	Color	3 ft.	6 ft.	10 ft.	15 ft.
A-MALE TO A-MALE	GRAY	NUB-3003	NUB-3006	NUB-3010	NUB-3015
A-MALE TO B-MALE	GRAY	NUB-3103	NUB-3106	NUB-3110	NUB-3115
A-MALE TO A-FEMALE	GRAY	NUB-3203	NUB-3206	NUB-3210	NUB-3215

## Super-Speed USB 3.0 Cables

Quest also offers the lightning fast USB 3.0 version cables with high-speed data transmissions topping at 4.8 Gbps. Unlike USB 2.0 which always supplies power, USB 3.0 Smart Charging detects when a device is plugged in and will stop providing power when not in use. Cables are offered in standard male to male, as well as male to female extension cables.

- 10X faster data transfers than USB 2.0
- Maximum transfer speed 4.8 Gbps
- Upload and download data simultaneously
- 900 Milliamp smart charging power
- Backward compatible with USB 2.0 & 1.1



**A-Male to A-Male**



**A-Male to B-Male**



**A-Male to A-Female**

Description	Color	3 ft.	6 ft.
A-MALE TO A-MALE	BLACK	NUB-4006	NUB-4010
A-MALE TO B-MALE	BLACK	NUB-4106	NUB-4110
A-MALE TO A-FEMALE	BLACK	---	NUB-4210

## USB 2.0 to Lightning Cables

- Ideal for Apple iPhone, iPod and iPad
- Connect to computer for syncing and charging
- Connect to USB power adapter for outlet charging



Description	Color	3 ft.	6 ft.
USB 2.0 TO LIGHTNING CABLE	BLACK	NUB-6103	NUB-6106
USB 2.0 TO LIGHTNING CABLE	WHITE	NUB-6803	NUB-6806

## USB to HDMI 4K2K Adapters

- Offered in USB Type-C to HDMI A
- Compatible with most computers and mobile devices
- HDMI 4K2K resolution, 2160p



Item #	Color	Description
NUB-6111	WHITE	USB TYPE-C TO HDMI ADAPTER

## USB to Ethernet Adapters

- Available in USB Type-C to RJ45
- Support twisted pair crossover detection and auto-correction
- Compatible with most computers and mobile devices



Item #	Color	Description
NUB-6011	WHITE	USB TYPE-C TO ETHERNET RJ45 ADAPTER, 100 Mbps
NUB-6411	WHITE	USB TYPE-C TO ETHERNET RJ45 ADAPTER, 1000 Mbps

## USB to VGA Adapters

- Offered in USB Type-C to VGA
- Interfaces with most displays, monitors and projectors
- Compatible with most computers and mobile devices
- Audio must be transmitted separately



Item #	Color	Description
NUB-6211	WHITE	USB TYPE-C TO VGA ADAPTER

## USB 3.0 Hub w/ Ethernet Port

- USB Type-C to 3-port USB 3.0 plus 1-port Ethernet
- Maximum transfer speed 5 Gbps
- Compatible with most computers and mobile devices
- Supports 10/100/1000Mbps auto-detection



\*Backward Compatible with USB 2.0 & 1.1

Item #	Color	Description
NUB-6013	BLACK	USB TYPE-C TO 3-PORT USB 3.0 PLUS 1-PORT ETHERNET



Fig. 1



Fig. 2



Fig. 3



Fig. 4



Fig. 5



Fig. 6

## Premium SVGA Video Cables

- Premium double shielded construction
- 3 Coax (Red, Green, Blue) + 7 Conductor
- High-density molded ferrites for EMI/RFI protection
- UXGA, SVGA, SXGA compliant
- PVC jacket

Item #	Figure	Description
NCC-9206	FIG. 1	6 FT. SVGA CABLE, HDB-15 (M-M) W/FERRITE
NCC-9210	FIG. 1	10 FT. SVGA CABLE, HDB-15 (M-M) W/FERRITE
NCC-9215	FIG. 1	15 FT. SVGA CABLE, HDB-15 (M-M) W/FERRITE
NCC-9225	FIG. 1	25 FT. SVGA CABLE, HDB-15 (M-M) W/FERRITE
NCC-9250	FIG. 1	50 FT. SVGA CABLE, HDB-15 (M-M) W/FERRITE
NCC-9315	FIG. 2	15 FT. SVGA EXTENSION CABLE, HDB-15 (M-F) W/FERRITE
NCC-9325	FIG. 2	25 FT. SVGA EXTENSION CABLE, HDB-15 (M-F) W/FERRITE
NCC-9350	FIG. 2	50 FT. SVGA EXTENSION CABLE, HDB-15 (M-F) W/FERRITE

## Economy SVGA Video Cables

- Aluminum mylar shield
- Tinned conductors & drain wire
- Molded hood, strain relief & thumbscrews
- PVC jacket / gold plated pins
- Connector ground indents

Item #	Figure	Description
NCC-9006	FIG. 3	6 FT. SVGA EXTENSION CABLE, HDB-15 (M-F)
NCC-9010	FIG. 3	10 FT. SVGA EXTENSION CABLE, HDB-15 (M-F)
NCC-9906	FIG. 4	6 FT. SVGA CABLE, HDB-15(M-M)

## Equipment AC Power Cords

- 10A/125V power cord rating
- 18AWG conductors with SVT jacket
- Additional lengths and styles are available upon request



Item #	Figure	Description
GMP-4401	FIG. 5	1 FT. AC POWER EXTENSION CORD, UNSHIELDED
GMP-4006	FIG. 6	6 FT. EQUIPMENT AC POWER CORD, UNSHIELDED

# Computer Data Cables

- Aluminum mylar shield
- Tinned copper drain wire
- Tinned stranded copper conductors
- Molded with thumbscrews
- PVC jacket

Item #	Figure	Description
NCC-1106	FIG. 1	6 FT. CABLE, DB-9 (M-M)
NCC-1110	FIG. 1	10 FT. CABLE, DB-9 (M-M)
NCC-1125	FIG. 1	25 FT. CABLE, DB-9 (M-M)
NCC-1206	FIG. 2	6 FT. EXTENSION CABLE, DB-9 (M-F)
NCC-1210	FIG. 2	10 FT. EXTENSION CABLE, DB-9 (M-F)
NCC-1225	FIG. 2	25 FT. EXTENSION CABLE, DB-9 (M-F)
NCC-2206	FIG. 3	6 FT. CABLE, DB-9 (F-F)
NCC-2210	FIG. 3	10 FT. CABLE, DB-9 (F-F)
NCC-5206	FIG. 4	6 FT. CABLE, DB-25 (M) TO DB-9 (F)
NCC-5210	FIG. 4	10 FT. CABLE, DB-25 (M) TO DB-9 (F)



## Null Modem Cables & Adapters

- Cross-wired DTE and DCE signals
- Constructed of molded PVC

Item #	Figure	Description
NCC-5406	FIG. 4	6 FT. NULL MODEM CABLE, DB-25 (M) TO DB-9 (F)
NCC-5410	FIG. 4	10 FT. NULL MODEM CABLE, DB-25 (M) TO DB-9 (F)
NCC-5425	FIG. 4	25 FT. NULL MODEM CABLE, DB-25 (M) TO DB-9 (F)
NCC-5625	FIG. 5	25 FT. NULL MODEM CABLE, DB-25 (M-F)
NGC-5102	FIG. 6	DB-25 (M-F) NULL MODEM ADAPTER
NGC-5105	FIG. 7	DB-9 (M-F) NULL MODEM ADAPTER SLIM LINE

## Modular Adapters

Quest offers a select line of modular adapters for converting data from D-sub to modular connectors. These adapters allow D-sub transmission across building wiring and are available in DB9, DB15 and DB25 versions.

- Converts D-Sub to modular cables
- PVC housing
- Allows D-Sub data to be transmitted across building wiring
- Available in DB-9, DB-15 and DB-25 versions

Item #	Figure	Description
NMA-6209	FIG. 8	6P6C RJ12 TO DB-9 (F) MOD ADAPTER
NMA-8109	FIG. 8	8P8C RJ45 TO DB-9 (M) MOD ADAPTER
NMA-8209	FIG. 8	8P8C RJ45 TO DB-9 (F) MOD ADAPTER
NMA-8509	FIG. 8	8P8C RJ45 TO DB-25 (M) MOD ADAPTER



\*Male

Fig. 1



\*Female

Fig. 2



Fig. 3

Fig. 4



Fig. 5

Fig. 6



\*Male

Fig. 7



\*Female

Fig. 8



Fig. 9

Fig. 10



Fig. 11

## D-Sub Solder Connectors

- Gold plating over nickel contacts
- UL94V-0 flame retardant insulator

Item #	Figure	Description
DSC-1109	FIG. 1	D-SUB CONNECTOR, 9 PIN (M), SOLDER TYPE
DSC-1115	FIG. 1	D-SUB CONNECTOR, 15 PIN (M), SOLDER TYPE
DSC-1125	FIG. 1	D-SUB CONNECTOR, 25 PIN (M), SOLDER TYPE
DSC-1137	FIG. 1	D-SUB CONNECTOR, 37 PIN (M), SOLDER TYPE
DSC-1209	FIG. 2	D-SUB CONNECTOR, 9 PIN (F), SOLDER TYPE
DSC-1215	FIG. 2	D-SUB CONNECTOR, 15 PIN (F), SOLDER TYPE
DSC-1225	FIG. 2	D-SUB CONNECTOR, 25 PIN (F), SOLDER TYPE
DSC-3109	FIG. 3	D-SUB CONNECTOR, HD 15 PIN (M), SOLDER TYPE
DSC-3209	FIG. 4	D-SUB CONNECTOR, HD 15 PIN (F), SOLDER TYPE

## D-Sub Crimp Connectors

- Gold plating over nickel contacts
- UL94V-0 flame retardant insulator

Item #	Figure	Description
DHA-2101	FIG. 5	D-SUB, CRIMP PINS, MALE
DHA-2102	FIG. 6	D-SUB, CRIMP PINS, FEMALE
DSC-2109	FIG. 7	D-SUB CONNECTOR, 9 PIN (M), CRIMP TYPE
DSC-2115	FIG. 7	D-SUB CONNECTOR, 15 PIN (M), CRIMP TYPE
DSC-2125	FIG. 7	D-SUB CONNECTOR, 25 PIN (M), CRIMP TYPE
DSC-2209	FIG. 8	D-SUB CONNECTOR, 9 PIN (F), CRIMP TYPE
DSC-2215	FIG. 8	D-SUB CONNECTOR, 15 PIN (F), CRIMP TYPE
DSC-2225	FIG. 8	D-SUB CONNECTOR, 25 PIN (F), CRIMP TYPE

## Telco Connectors

- Connector with 90 degree hood
- Terminates 24-26 AWG wire

Item #	Figure	Description
DST-1001	FIG. 9	CENTRONICS TELCO CONNECTOR, 50 PIN (M), 522912-1
DST-1002	FIG. 10	CENTRONICS TELCO CONNECTOR, 50 PIN (F), 522913-1

## D-Sub Insertion/Extraction Tools

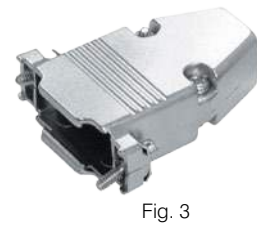
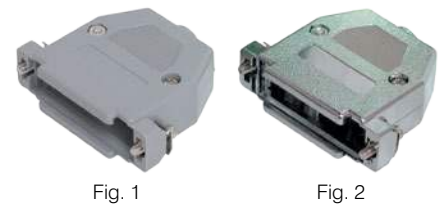
- Tool for fastening and removing crimp pins

Item #	Figure	Description
DHA-3000	FIG. 11	D-SUB INSERTION / EXTRACTION TOOL

## D-Sub Hoods

- Available in plastic, metalized plastic or metal
- Includes screw-lock hardware

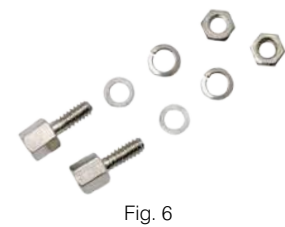
Item #	Figure	Description
DSH-5109	FIG. 1	D-SUB HOOD, DB-9, PLASTIC
DSH-5115	FIG. 1	D-SUB HOOD, DB-15, PLASTIC
DSH-5125	FIG. 1	D-SUB HOOD, DB-25, PLASTIC
DSH-5137	FIG. 1	D-SUB HOOD, DB-37, PLASTIC
DSH-5309	FIG. 2	D-SUB HOOD, DB-9, METALIZED
DSH-5325	FIG. 2	D-SUB HOOD, DB-25, METALIZED
DSH-5409	FIG. 3	D-SUB HOOD, DB-9, METAL
DSH-5415	FIG. 3	D-SUB HOOD, DB-15, METAL
DSH-5425	FIG. 3	D-SUB HOOD, DB-25, METAL



## D-Sub Mounting Hardware

- Ideal for use with most D-Sub hoods
- Thumbscrews & standoffs available

Item #	Figure	Description
DHA-5010	FIG. 4	D-SUB THUMBSCREW (SET OF 2)
DHA-5020	FIG. 5	D-SUB HEX STANDOFF (SET OF 2)
DHA-5030	FIG. 6	D-SUB FEMALE SCREWLOCK (SET OF 2)



## D-Sub Slim Line Adapters

Item #	Figure	Description
NGC-1099	FIG. 7	DB-9 (F) TO DB-25 (M) SLIM LINE ADAPTER
NGC-1000	FIG. 7	DB-9 (M) TO DB-25 (F) SLIM LINE ADAPTER
NGC-1011	FIG. 8	DB-9 (M-M) SLIM LINE ADAPTER
NGC-1022	FIG. 8	DB-9 (F-F) SLIM LINE ADAPTER
NGC-1033	FIG. 9	DB-15 (M-M) SLIM LINE ADAPTER
NGC-1044	FIG. 9	DB-15 (F-F) SLIM LINE ADAPTER
NGC-1055	FIG. 10	DB-25 (M-M) SLIM LINE ADAPTER
NGC-1066	FIG. 10	DB-25 (F-F) SLIM LINE ADAPTER
NGC-1077	FIG. 11	HD-15 (M-M) SLIM LINE ADAPTER, HIGH-DENSITY
NGC-1088	FIG. 11	HD-15 (M-M) SLIM LINE ADAPTER, HIGH-DENSITY



**DB-9 to DB-25**

Fig. 7



**DB-9**

Fig. 8

**DB-15**

Fig. 9

**DB-25**

Fig. 10

**HD-15**

Fig. 11