

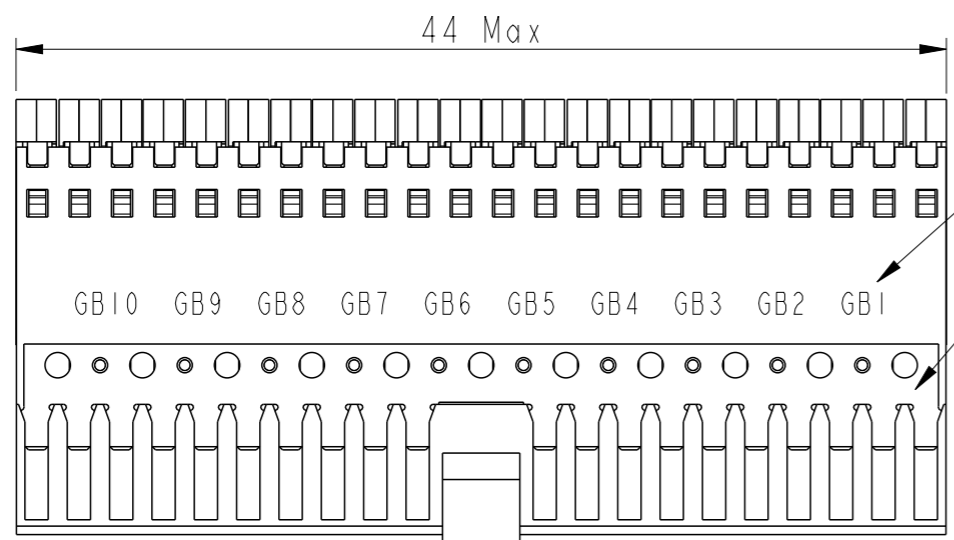
PART NUMBER	GRNDBAR 1 POS	GRNDBAR 2 POS	GRNDBAR 3 POS	GRNDBAR 4 POS	GRNDBAR 5 POS	GRNDBAR 6 POS	GRNDBAR 7 POS	GRNDBAR 8 POS	GRNDBAR 9 POS	GRNDBAR 10 POS
10155108-101LF	2A, 3B, 2C, 3D, 2E	5A, 4B, 5C, 4D, 5E	6A, 7B, 6C, 7D, 6E	9A, 8B, 9C, 8D, 9E	10A, 11B, 10C, 11D, 10E	13A, 12B, 13C, 12D, 13E	14A, 15B, 14C, 15D, 14E	17A, 16B, 17C, 16D, 17E	18A, 19B, 18C, 19D, 18E	21A, 20B, 21C, 20D, 21E
10155108-102LF	NIL	NIL	NIL	NIL	NIL	NIL	NIL	NIL	NIL	NIL

ABOVE TABLE SHOWS CONNECTED GROUND POSITIONS OF INDIVIDUAL GROUND BARS

PINNING CONFIGURATION

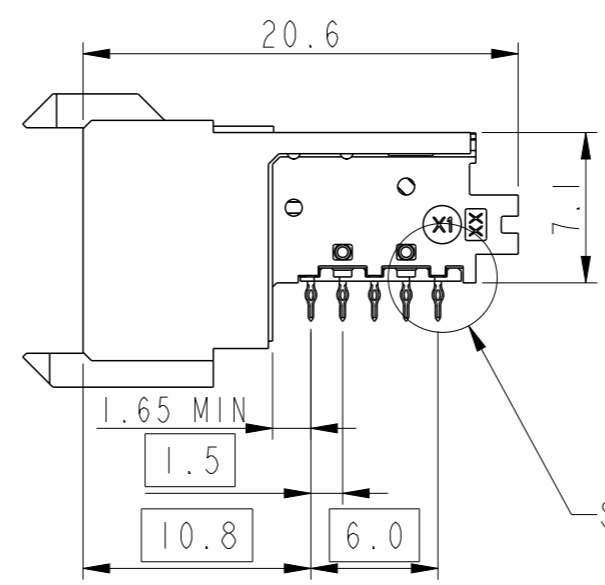
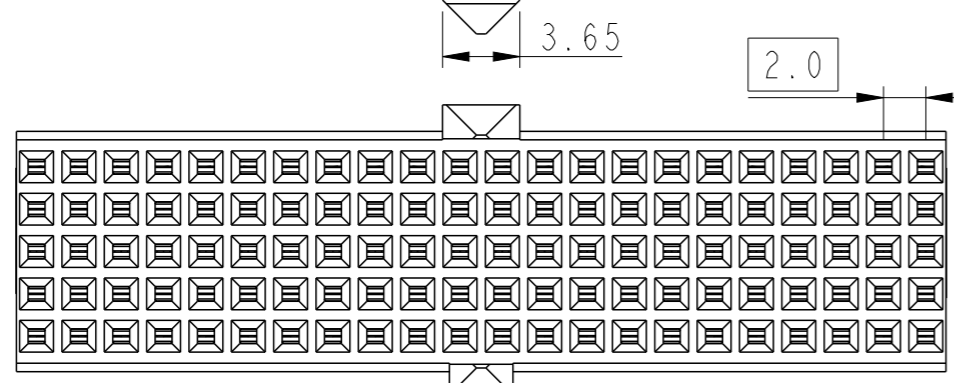
F	0	0	0	0	0	0	0	0	0	0	0	0	0	0	0	0	0	0	0	0	0	
E	G	G	HS	HS	G	G	HS	HS	G	G	HS	HS	G	G	HS	HS	G	G	HS	HS	G	G
D	HS	HS	G	G	HS	HS	G	G	HS	HS	G	G	HS	HS	G	G	HS	HS	G	G	HS	HS
C	G	G	HS	HS	G	G	HS	HS	G	G	HS	HS	G	G	HS	HS	G	G	HS	HS	G	G
B	HS	HS	G	G	HS	HS	G	G	HS	HS	G	G	HS	HS	G	G	HS	HS	G	G	HS	HS
A	G	G	HS	HS	G	G	HS	HS	G	G	HS	HS	G	G	HS	HS	G	G	HS	HS	G	G
Z	0	0	0	0	0	0	0	0	0	0	0	0	0	0	0	0	0	0	0	0	0	0

HS	HIGH SPEED SIGNAL
G	GROUND
0	EMPTY

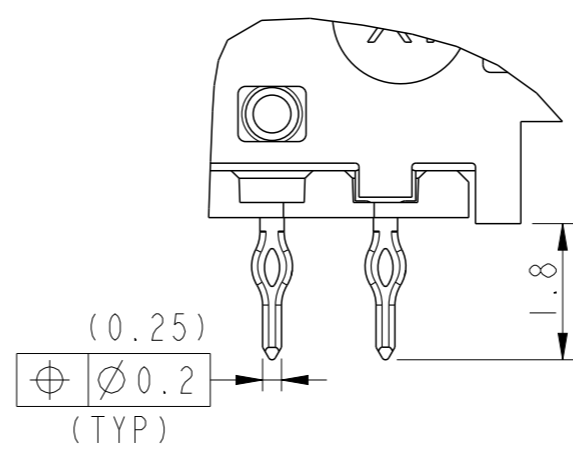
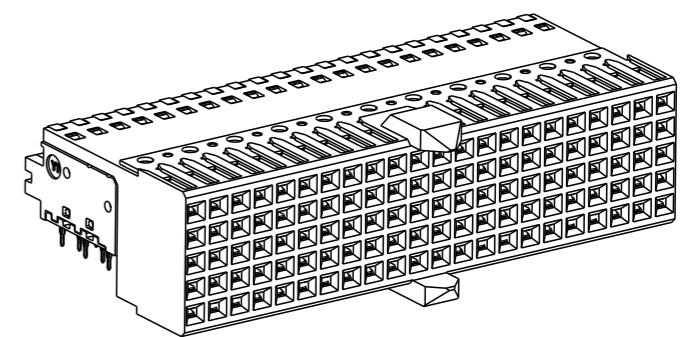


NOTE 6

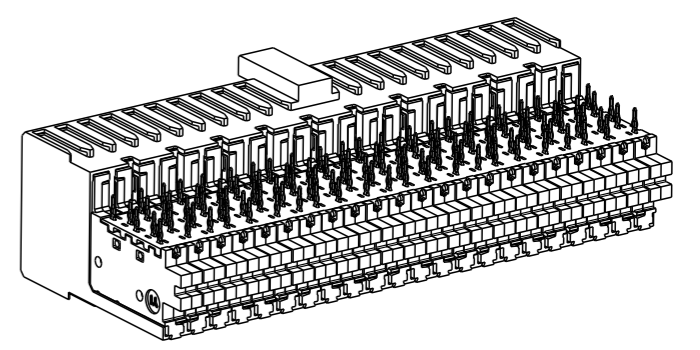
NOTE 8



SEE DETAIL A



DETAIL A
SCALE 10:1



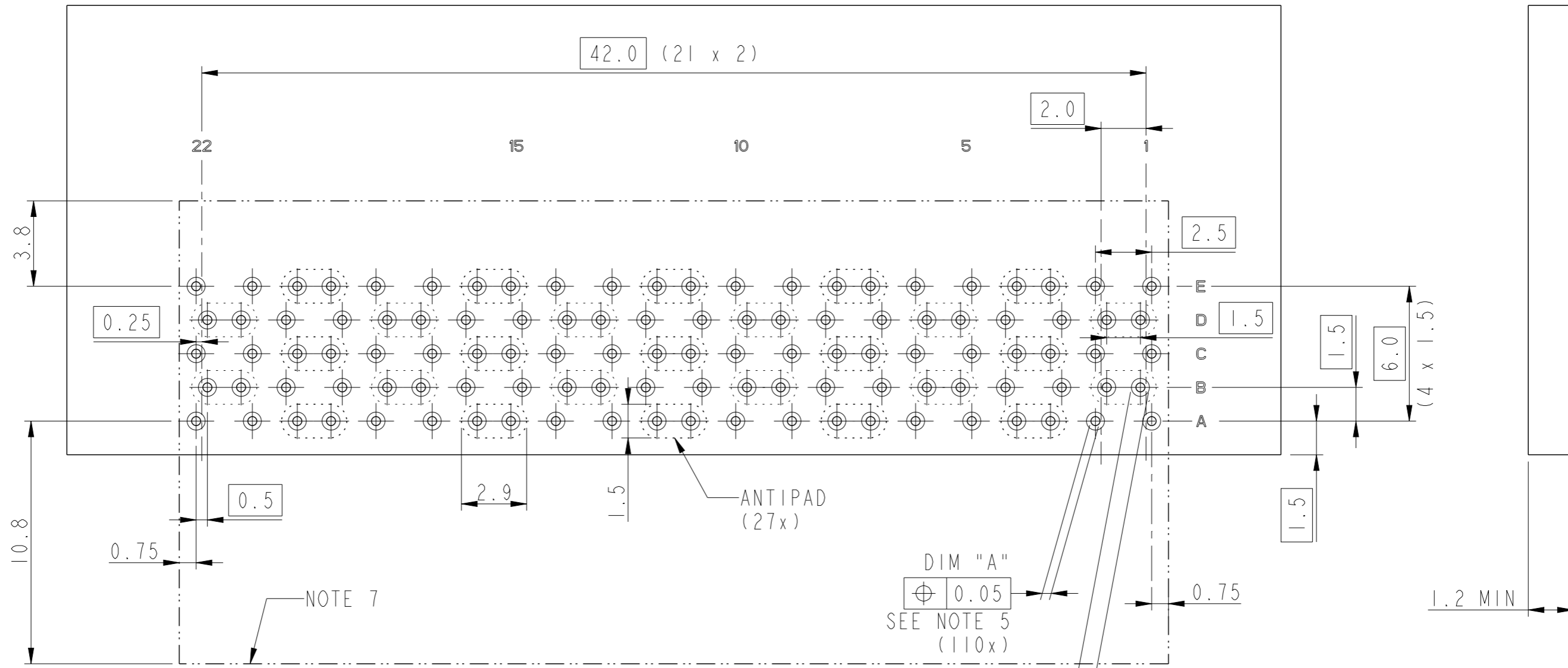
Amphenol FCI

© 2016 AFCI

spec ref	-	dr	Binesh C	2019/11/30	projection	MM	size	A3	scale	2:1
tolerance std	ISO 406 ISO 1101	eng	Binesh C	2019/12/02			ecn no	-	rel level	Released
TOLERANCES UNLESS OTHERWISE SPECIFIED		chr	-	2019/12/02						
surface	linear	0.X	±0.30		TYPE-AB22 RECEPTACLE ASSEMBLY		dwg no	10155108	rev	A
		0.XX	±0.20		MILLIPACS HIGH SPEED NON-SHIELDED					
	angular	0°	±3°		cat. no.	10155108-10xLF				

PART NUMBER:

RECOMMENDED PCB LAYOUT FOR 10155108-10xLF



NOTES:

1. Materials
 - Housing & Imla's: LCP (UL94 V-0)
 - Leadframe: Copper alloy
2. Finish
 - Contact area: Ni underlayer with Au or GXT top layer(Performance Level-2)
 - EON area: Ni underlayer with Sn top layer
3. Mates with IEC 61076-4-101 series 2mm HM headers with contact mating level 1 & 2 in signal rows. Outer shielding row of receptacle can mate with level 1,2 & 3 header contacts.
4. Mounting style: Press-fit, flat rock insertion
5. Refer the table for Recommended plated through hole dimensions.
6. Groundbar positions indicated by "GBx".
7. Connector spacing
8. Ground bar support not required for Non GB version.

RECOMMENDED PLATED THROUGH HOLE DIMENSIONS

DIM	FINISHED HOLE DIA	Cu. THICKNESS	Sn THICKNESS	DRILLED HOLE DIA
A	0.35-0.45	0.02-0.05	0.0008-0.0012	0.45-0.49

spec ref	-	dr	Binesh C	2019/11/30	projection	MM	size	A3	scale	5:1
tolerance std	ISO 406 ISO 1101	eng	Binesh C	2019/12/02			ecn no	-	rel level	Released
TOLERANCES UNLESS OTHERWISE SPECIFIED		chr	-	product family			MILLIPACS			
surface	linear	0.X	±0.30		TYPE-AB22 RECEPTACLE ASSEMBLY		dwg no	10155108	rev	A
		0.XX	±0.20		MILLIPACS HIGH SPEED NON-SHIELDED					
	angular	0°	±3°		cat. no.	Product - Customer Drw	sheet 2 of 2			

Amphenol FCI

© 2016 AFCI