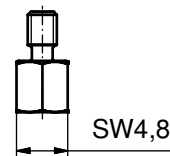
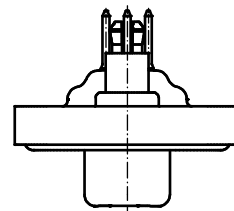
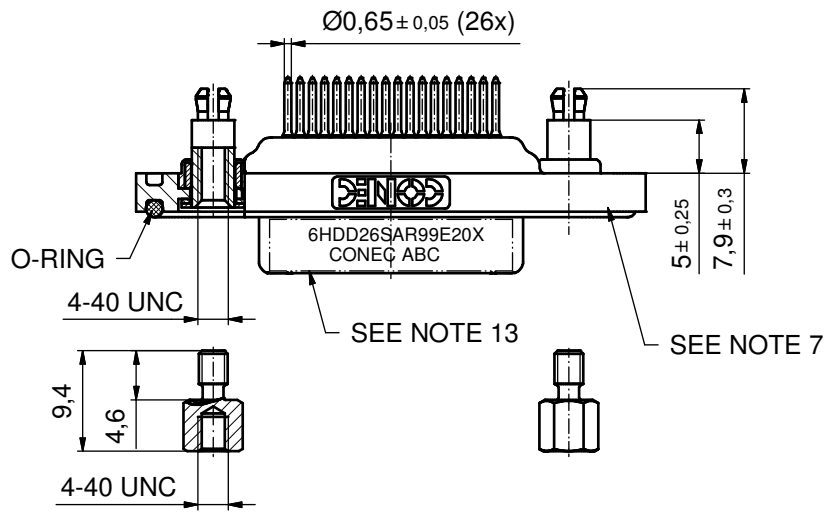
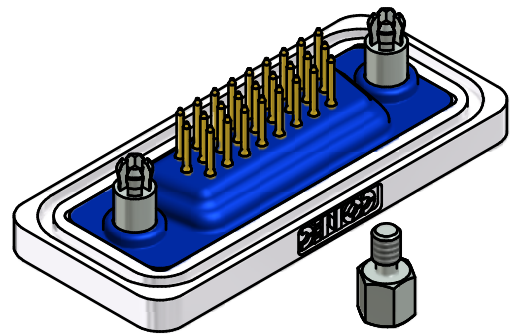
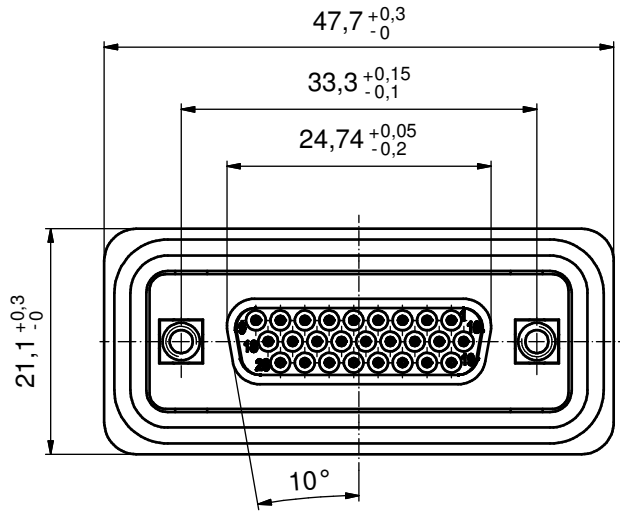
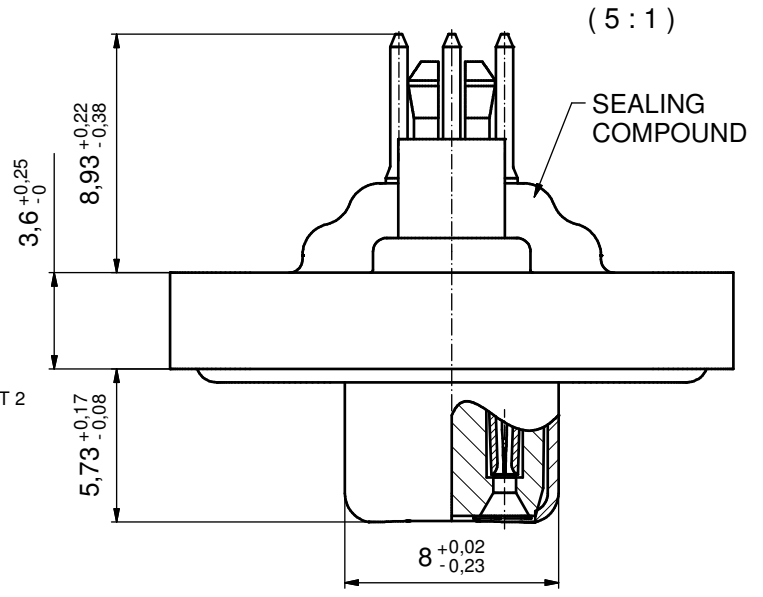


NOTES:

1. FOR WAVESOLDERING (SOLDER BATH TEMPERATURE 240°C FOR 5 SEC. AND SOLDER PREHEAT 120°C FOR 120 SEC.)
2. METALSHELLS: COPPER ALLOY; min. 315µin TIN over 40-80µin NICKEL
3. INSULATORS: PBT GF UL 94 V-0, BLACK
4. CONTACTS: COPPER ALLOY  
PLATING: GOLD FLASH over NICKEL
5. THREADED SPACER CLIP: COPPER ALLOY;  
min. 200µin TIN over 80µin NICKEL  
PCB-HOLE: Ø3,1±0,1; THICKNESS 1,6mm
6. COLLARS: COPPER ALLOY; min. 200µin TIN over 80µin NICKEL
7. FRAME: ZINC DIE CAST; NICKEL PLATED
8. HEXLOCKING SCREW: STAINLESS STEEL
9. O-RING: SILICON; BLUE
10. SEALING COMPOUND: PUR; BLUE
11. P.C.B. HOLE DRILLINGS AND RECOMMENDED PANEL CUT-OUT ON SHEET 2
12. RECOMMENDED TORQUE FOR MOUNTING SCREW 35Ncm (3,1 in.LB) / max. 40Ncm (3,5 in. LB)
13. CONNECTOR IS PART MARKED: 6HDD26SAR99E20X CONEC ABC

AT ALL TIMES WATER RESISTANT CONNECTORS NOT IN USE SHOULD BE COVERED WITH A CONEC WATER RESISTANT CAP OR WATER TIGHT HOOD.

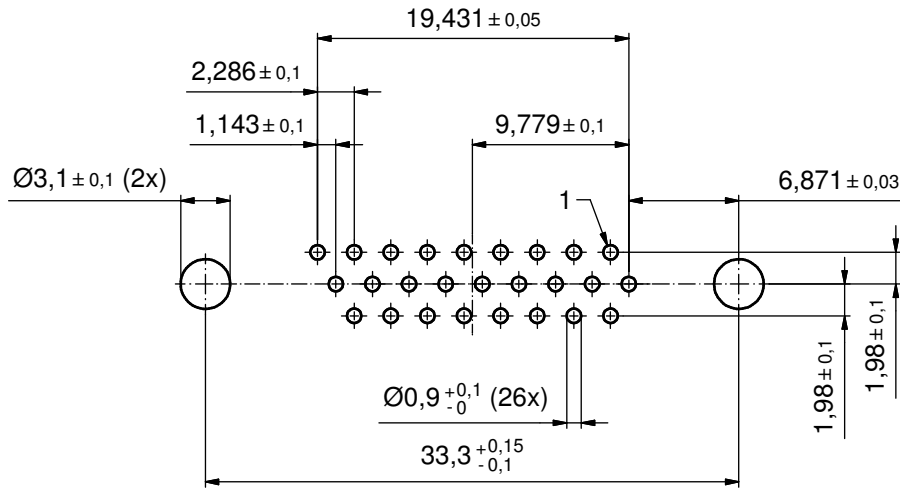


Directive 2002/95/EC RoHS compliant

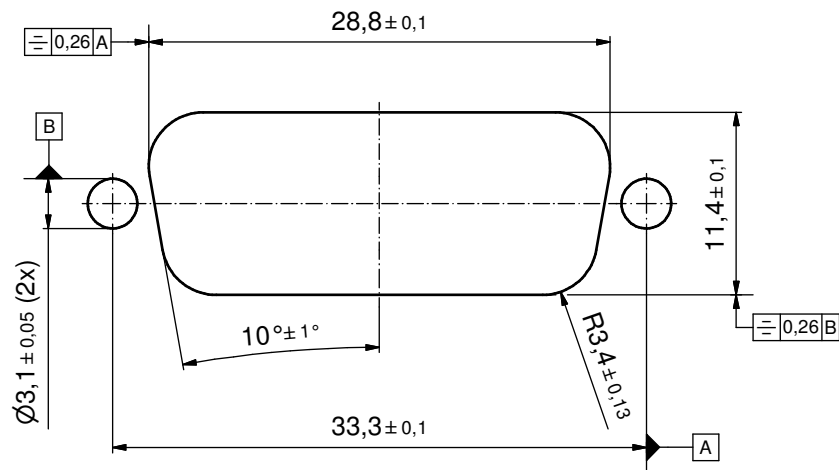
THIS DRAWING MAY NOT BE COPIED OR REPRODUCED IN ANY WAY, AND MAY NOT BE PASSED ON TO A THIRD PARTY WITHOUT WRITTEN PERMISSION. OWNERSHIP AND COPYRIGHT OF CONEC GmbH DO NOT ALTER CAD DRAWING BY HAND	tolerance		dim. in mm		scale: 2:1 (5:1)
					material: SEE NOTES
	drawn	28.03.12	Henneboel		title: <b>D-SUB HD FEMALE</b> 26pos. SOLDER PIN STRAIGHT with threaded spacer clip and hexlocking screw
	appd.	28.03.12	Fischer		
	norm				
d-old					
rev.	a	Original			dwg no: 15K1A1022
				part no: 6HDD26SAR99E20X	
				DIN-A3 sh: 1	



P.C.B. HOLE DRILLINGS  
(P.C.B. TOP SIDE)



RECOMMENDED PANEL CUT-OUT



THIS DRAWING MAY NOT BE COPIED OR REPRODUCED IN ANY WAY, AND MAY NOT BE PASSED ON TO A THIRD PARTY WITHOUT WRITTEN PERMISSION. OWNERSHIP AND COPYRIGHT OF CONEC GmbH DO NOT ALTER CAD DRAWING BY HAND				tolerance		scale: 3:1	
				dim. in mm		material: see sheet 1	
				date	name	title: P.C.B. HOLE DRILLINGS D-SUB HD FEMALE 26pos. SOLDER PIN with threaded rear spacer clip and hexlocking screw	
				drawn	28.03.12 Henneboel		
				appd.	28.03.12 Fischer		
			norm		dwg no:		
			d-old		15K1A1022	DIN-A3	
			rev.	description	date	name	sh: 2
			<b>CONEC</b> <sup>®</sup>			part no: SEE SHEET 1	