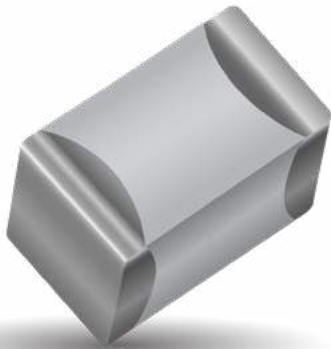


RF/Microwave Capacitors

RF/Microwave Multilayer Capacitors (MLC)

800A Series NP0 Porcelain, High RF Power Ultra-Low ESR



FEATURES

- Case A Size (.055" x .055")
- Low ESR / ESL
- High Q
- Low Noise
- Capacitance Range 0.1pF to 100pF
- Rated WVDC up to 250 VDC
- Zero TCC
- High Self-Resonance
- Established Reliability (QPL)

GENERAL DESCRIPTION

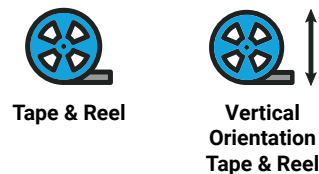
KYOCERA AVX 800 A Series offers superb performance in demanding high RF power applications requiring consistent and reliable operation. The combination of highly conductive metal electrode systems, optimized case geometries, and proprietary dielectrics, yields the lowest ESR. KYOCERA AVX new NP0 low loss rugged dielectrics are designed to provide superior heat transfer in high RF power applications. Ultra-low ESR and superior thermal performance insure that the 800 A Series products are your best choice for high RF power applications from UHF through microwave frequencies. Typical applications: UHF and Microwave Communications Systems, Wireless Communications, Public Safety Radio, Telecom, WiMAX, and Satellite Systems.

Typical circuit applications: High RF Power Filter Networks, Combiners, Couplers, Matching Networks, Output Coupling, Antenna Coupling, and DC Blocking and Bypassing.

ELECTRICAL SPECIFICATIONS

Temperature Coefficient (TCC)	0 ± 30 PPM/°C
Capacitance Range	0.1pF to 100pF
Operating Temperature	-55°C to +125°C*
Quality Factor	Greater than 2,000 @ 1 MHz.
Insulation Resistance (IR)	0.1 pF to 470 pF 10 ⁵ Megohms min. @ 25°C at rated WVDC 10 ⁵ Megohms min. @ 125°C at rated WVDC
Working Voltage (WVDC)	See Capacitance Values table
Dielectric Withstanding Voltage (DWV)	250% of rated WVDC for 5 seconds
Aging Effects	None
Piezoelectric Effects	None
Capacitance Drift	± (0.02% or 0.02 pF), whichever is greater

PACKAGING OPTIONS



ENVIRONMENTAL CHARACTERISTICS

Thermal Shock	Mil-STD-202, Method 107, Condition A
Moisture Resistance	Mil-STD-202, Method 106
Low Voltage Humidity	Mil-STD-202, Method 103, condition A, with 1.5 VDC applied while subjected to an environment of 85°C with 85% relative humidity for 240 hours
Life Test	MIL-STD-202, Method 108, for 2000 hours, at 125°C. 200% WVDC applied.
Solderability	Mil-STD-202, Method 208
Terminal Strength	Terminations for chips and pellets withstand a pull of 5 lbs. min., 10 lbs. typical, for 5 seconds in direction perpendicular to the termination surface of the capacitor.

RF/Microwave Capacitors

RF/Microwave Multilayer Capacitors (MLC)

800A Series NP0 Porcelain, High RF Power Ultra-Low ESR



CAPACITANCE VALUES

Cap. Code	Cap. (pF)	Tol.	Rated WVDC	Cap. Code	Cap. (pF)	Tol.	Rated WVDC	Cap. Code	Cap. (pF)	Tol.	Rated WVDC
0R1	0.1	B	250	2R2	2.2	B, C, D	250	160	16	F, G, J, K, M	250
0R2	0.2			2R4	2.4			180	18		
0R3	0.3	B, C		2R7	2.7			200	20		
0R4	0.4			3R0	3.0			220	22		
0R5	0.5	B, C, D		3R3	3.3			240	24		
0R6	0.6			3R6	3.6			270	27		
0R7	0.7			3R9	3.9			300	30		
0R8	0.8			4R3	4.3			330	33		
0R9	0.9			4R7	4.7			360	36		
1R0	1.0			5R1	5.1			390	39		
1R1	1.1			5R6	5.6			430	43		
1R2	1.2			6R2	6.2			470	47		
1R3	1.3		6R8	6.8	510	51					
1R4	1.4		7R5	7.5	560	56					
1R5	1.5		8R2	8.2	620	62					
1R6	1.6		9R1	9.1	680	68					
1R7	1.7	100	10	750	75						
1R8	1.8	110	11	820	82						
1R9	1.9	120	12	910	91						
2R0	2.0	130	13	101	100						
2R1	2.1	150	15								

HOW TO ORDER

Series 800

Case Size A
See mechanical dimensions below

Capacitance 100
EIA Capacitance Code in pF.
First two digits = significant figures or "R" for decimal place.
Third digit = number of zeros or after "R" significant figures

Capacitance Tolerance Code J

Code	B	C	D	F	G	J	K	M
Tol.	±1 pF	±.25 pF	±.5 pF	±1%	±2%	±5%	±10%	±20%

Termination Style Code T

Voltage Rating 250

Laser Marking (Optional) X

Packaging T
T = Tape and Reel, 500 pc qty
TV = Vertical Orientation of Product Tape and Reel, 500 pc qty
For tray and box options, leave last position blank.
Please see last column mechanical configuration table for package quantities

The above part number refers to a 800A Series (case size A) 10 pF capacitor, J tolerance (±5%), 250 WVDC, with T termination (Tin Plated over Nickel Barrier Termination), Laser Marking and Tape and Reel 4000 pc qty. Packaging

RF/Microwave Capacitors

RF/Microwave Multilayer Capacitors (MLC)

800A Series NP0 Porcelain, High RF Power Ultra-Low ESR



MECHANICAL CONFIGURATION

Series & Case Size	Term. Code	Case Size & Type	Outline ES W/T is a Termination Surface	Body Dimensions inches (mm)			Lead and Termination Dimensions and Material		Pkg Type & Qty	Pkg Code
				Length (L)	Width (W)	Thickness (T)	Overlap (Y)	Materials		
800A	T	A Solderable Nickel Barrier		.055+.015-.010 (1.40+0.38-0.25)	.055 ±.015 (1.40 ±0.38)	.057 (1.45) max.	.010+.010-.005 (0.25+0.25-.013)	RoHS Compliant Tin Plated over Nickel Barrier Termination	T&R, 4000 or 500 pcs Vertical T&R, 4000 or 500 pcs	T4K or T TV4K or TV
800A	W	A Solder Plate		.055+.015-.010 (1.40+0.38-0.25)	.055 ±.015 (1.40 ±0.38)					

NON-MAGNETIC CONFIGURATION

Series & Case Size	Term. Code	Case Size & Type	Non-Magnetic Configuration	Body Dimensions inches (mm)			Lead and Termination Dimensions and Material		Pkg Type & Qty	Pkg Code
				Length (L)	Width (W)	Thickness (T)	Overlap (Y)	Materials		
800A	TN	A Non-Mag Solderable Barrier		.055+.025-.010 (1.40+0.64-0.25)	.055 ±.015 (1.40 ±0.38)	.057 (1.45) max.	.010+.010-.005 (0.25+0.25-.013)	RoHS Compliant Tin Plated over Non-Magnetic Barrier Termination	T&R, 4000 or 500 pcs Vertical T&R, 4000 or 500 pcs	T4K or T TV4K or TV

RF/Microwave Capacitors

RF/Microwave Multilayer Capacitors (MLC)

800A Series NP0 Porcelain, High RF Power Ultra-Low ESR



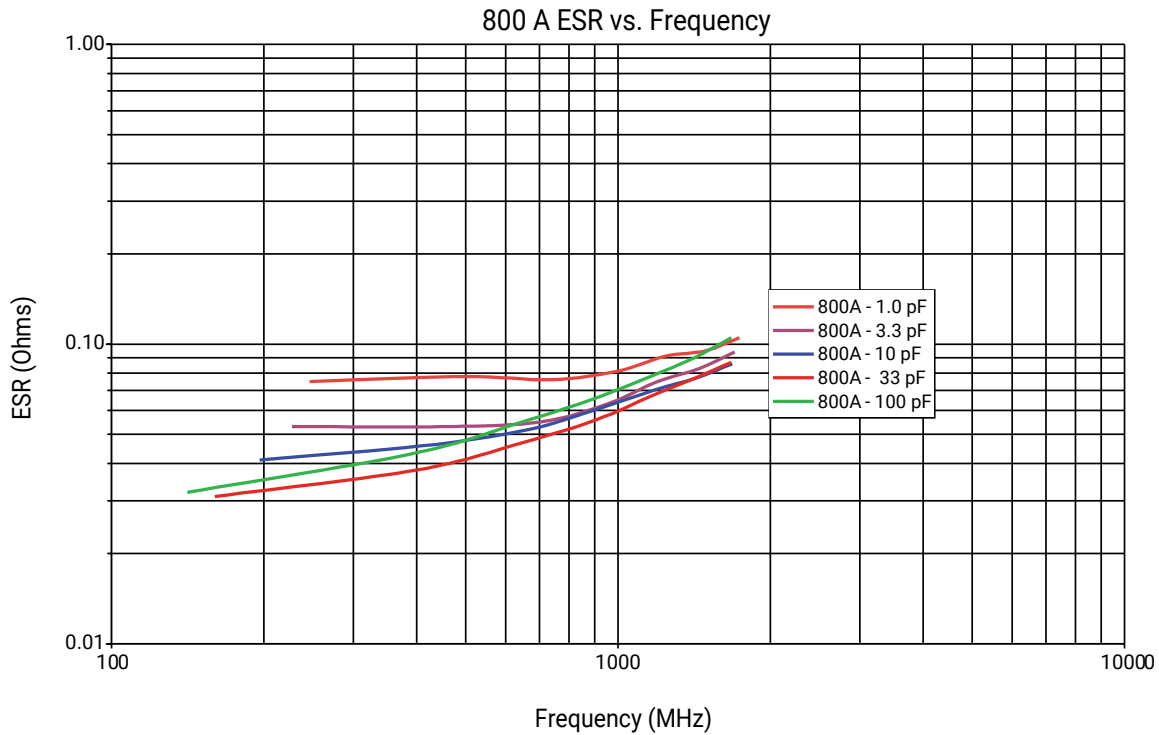
SUGGESTED MOUNTING PAD DIMENSIONS

Horizontal Electrode Orientation

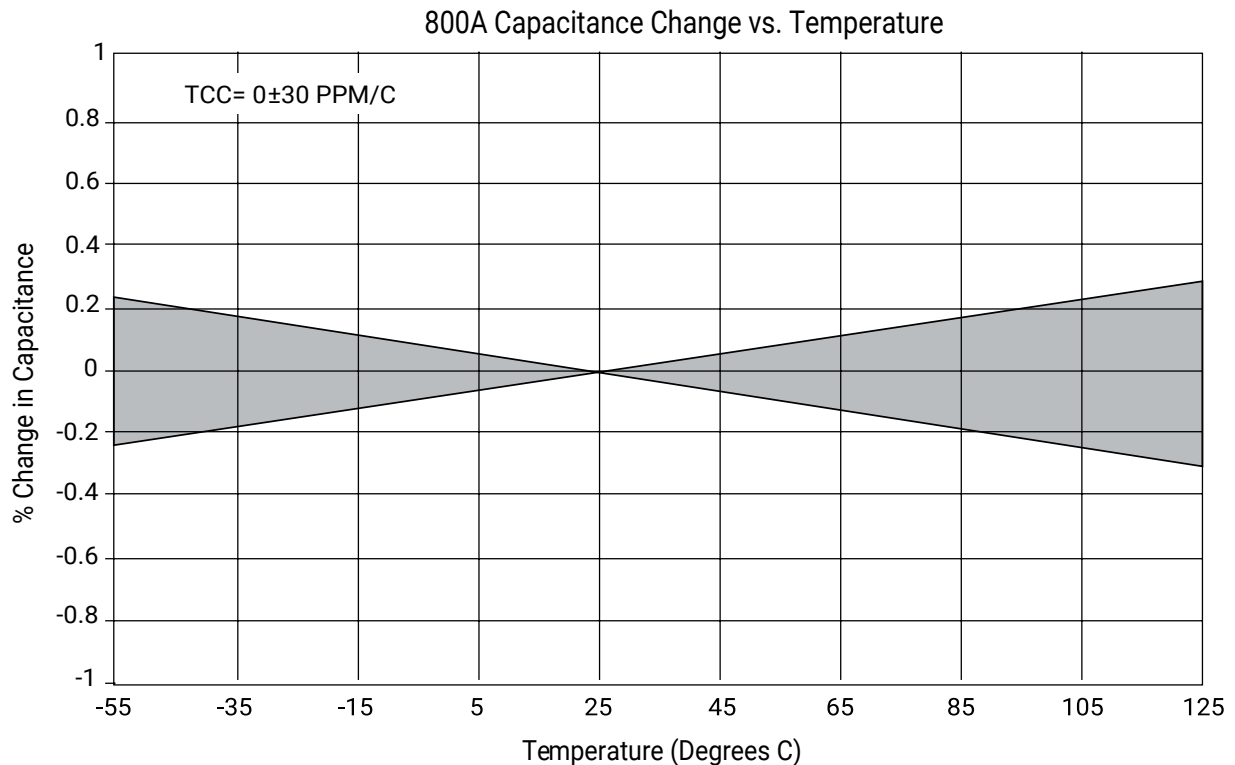
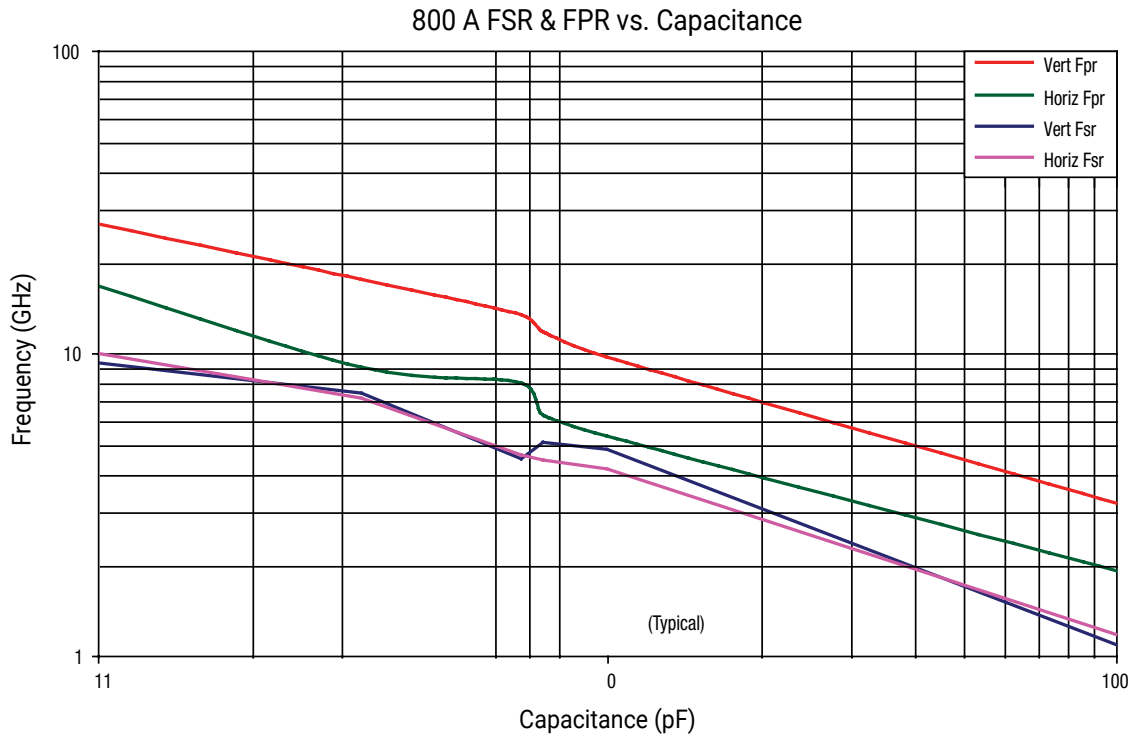
Vertical Electrode Orientation

Case A					
Mount Type	Pad Size	A Min.	B Min.	C Min.	D Min.
Vertical Mount	Normal	.070	.050	.030	.130
	High Density	.050	.030	.030	.090
Horizontal Mount	Normal	.080	.050	.030	.130
	High Density	.060	.030	.030	.090

Dimensions are in inches.



PERFORMANCE DATA



RF/Microwave Capacitors

RF/Microwave Multilayer Capacitors (MLC)

800A Series NP0 Porcelain, High RF Power Ultra-Low ESR



SAMPLE KITS

Kit #	RoHS Compliant	Item Number	Description	Cap. Value Range (pF)	Cap Value (pF)	Tol.	Price
Kit 80T		DK0080T	800A NP0 Ceramic High RF Power MLCs 16 different values, 15 pcs. min. per value	0.1 to 2.0	0.1, 0.2, 0.3, 0.4, 0.5, 0.6, 0.7, 0.8, 0.9, 1.0, 1.1, 1.2, 1.5 ±0.1 1.6, 1.8, 2.0	±0.1 ±0.25	\$135.00
Kit 81T		DK0081T	800A NP0 Ceramic High RF Power MLCs 16 different values, 15 pcs. min. per value	1.0 to 10	1.0, 1.2, 1.5, 1.8, 2.0, 2.2, 2.4, 2.7, 3.0, 3.3..... 3.9, 4.7, 5.6, 6.8, 8.2	±0.1 ±0.25	\$135.00
Kit 82T		DK0082T	800A NP0 Ceramic High RF Power MLCs 16 different values, 15 pcs. min. per value	10 to 100	10, 12, 15, 18, 20, 22, 24, 27, 30, 33, 39, 47, 56, 68, 82, 100	±5%	\$135.00