

PART NO. AND WEEK/YEAR DATE CODE TO BE PRINTED ON TOP OF COVER APPROXIMATELY AS SHOWN. SEE TABLE BELOW FOR DATE CODE INFORMATION.

WEEK/YEAR DATE CODE TABLE	
WK	WEEK OF THE YEAR 01 THRU 52 (EXAMPLE: 01= FIRST WEEK OF YEAR 52= LAST WEEK OF YEAR)
YR	18, 19, 20 ETC.. (EXAMPLE: YEAR 2019= 19)

PART NUMBER	PORT SIZE	SW	OAW	KEY(S) PORT1	KEY(S) PORT2	KEY(S) PORT3	KEY(S) PORT4	IDENTIFIERS
1110490107	4	76.30	80.00	2,4	2,4	2,4	2,4	SAS OUT PORT/END DEVICE
1110490108	4	76.30	80.00	4,6	4,6	4,6	4,6	SAS IN PORT/END DEVICE
1110490109	4	76.30	80.00	4	4	4	4	SAS UNIVERSAL PORT

- NOTES:
- PCB AND BRACKET SHOWN FOR REFERENCE ONLY.
  - REF. SD-74547-100 FOR KEY POSITIONS
  - GUIDE HOUSING MOUNTING THREAD= M2 X 0.40, SEE SHEET 3 FOR SCREW LENGTH + TORQUE SPEC.
  - PLATE GROUND PAD WITH EMERSION SILVER OR GOLD.
  - MATERIAL:  
GUIDE HOUSING - ZINC DIECAST, NICKEL PLATED.  
COVER - STAINLESS STEEL.  
GASKET - CONDUCTIVE ELASTOMER.
  - NO RoHS EXEMPTIONS.
  - GUIDE HOUSING PEGS FOR ALIGNMENT ONLY, DO NOT SOLDER.

SYMBOLS: THIS DRAWING CONTAINS INFORMATION THAT IS PROPRIETARY TO MOLEX ELECTRONIC TECHNOLOGIES, LLC AND SHOULD NOT BE USED WITHOUT WRITTEN PERMISSION

DIMENSION UNITS: mm SCALE: 2:1

GENERAL TOLERANCES (UNLESS SPECIFIED): ANGULAR TOL ± 1.0°

CURRENT REV DESC: SEE REVISION TABLE

EC NO: 610316  
DRWN: PMAHADEVAPPA 2018/12/20  
CHK'D: VK10 2019/01/11  
APPR: RCHEN08 2019/01/15

INITIAL REVISION:  
DRWN: PMAHADEVAPPA 2018/12/20  
APPR: RCHEN08 2019/01/15

DRAFT WHERE APPLICABLE MUST REMAIN WITHIN DIMENSIONS

THIRD ANGLE PROJECTION

DRAWING SERIES: C-SIZE 111049

DOCUMENT NUMBER: 1110490010

DOC TYPE: PSD

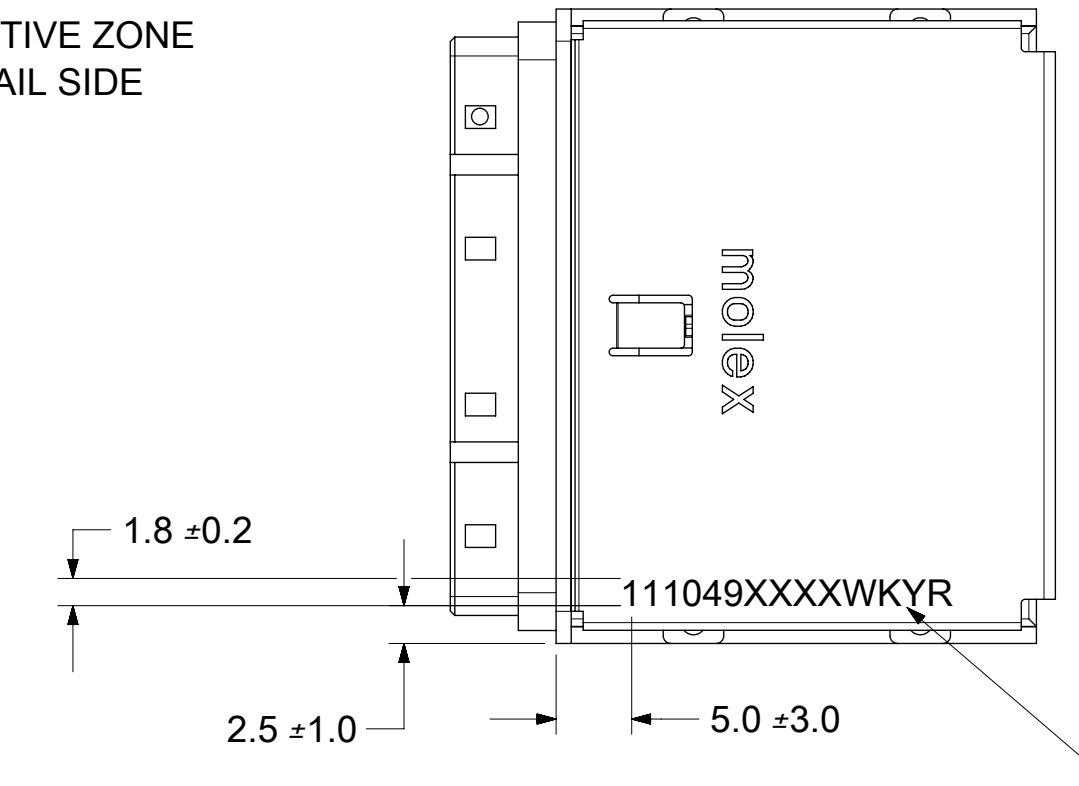
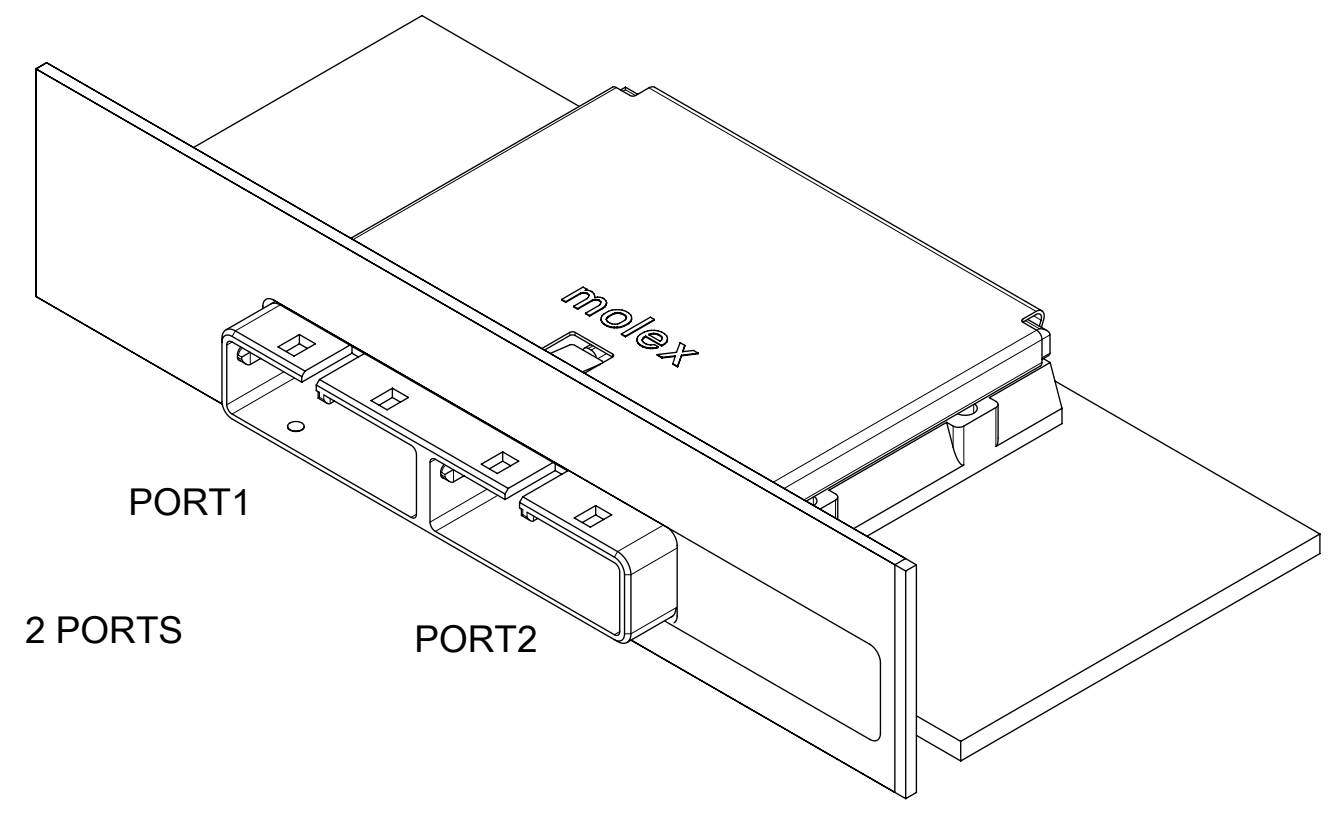
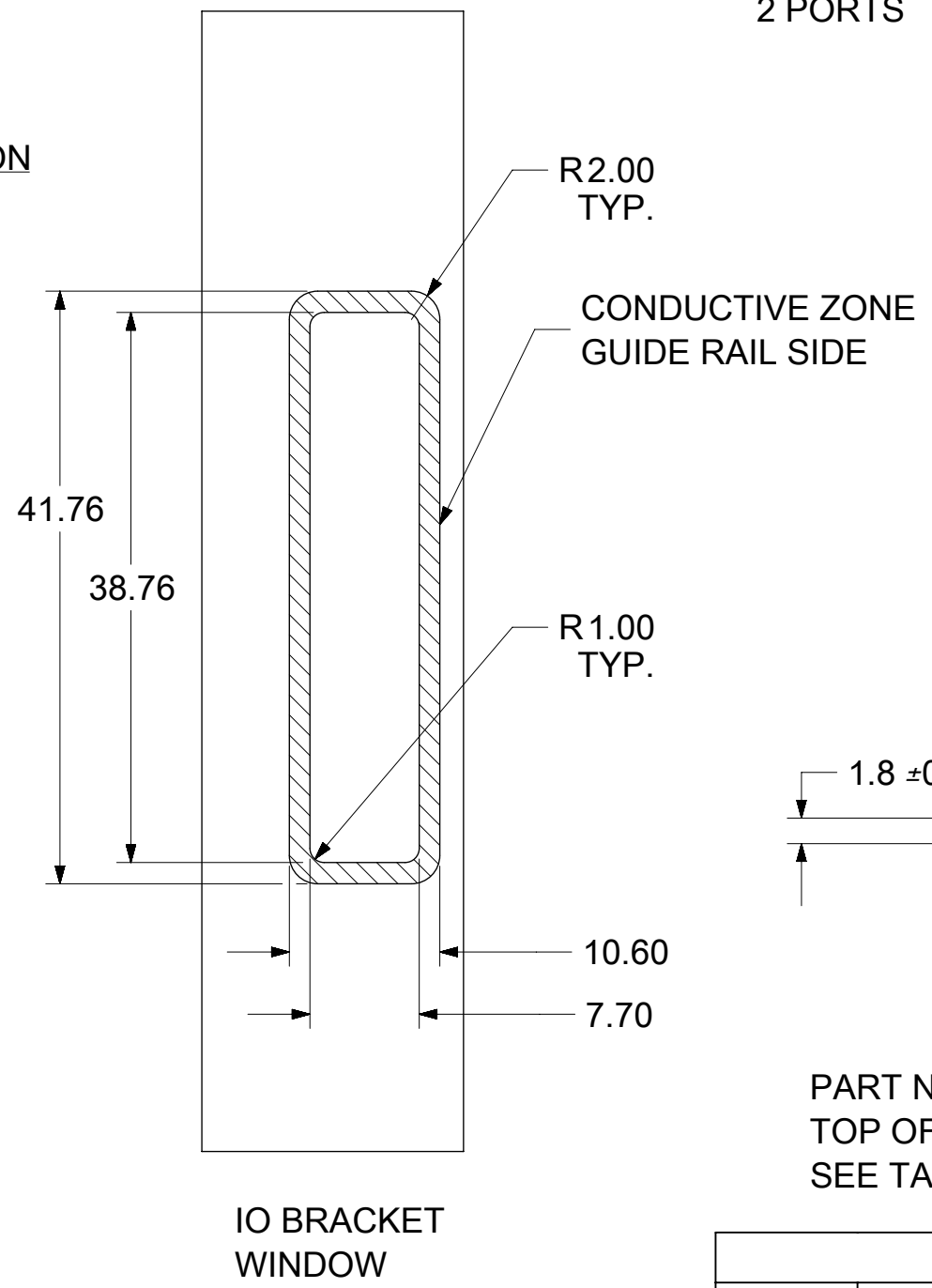
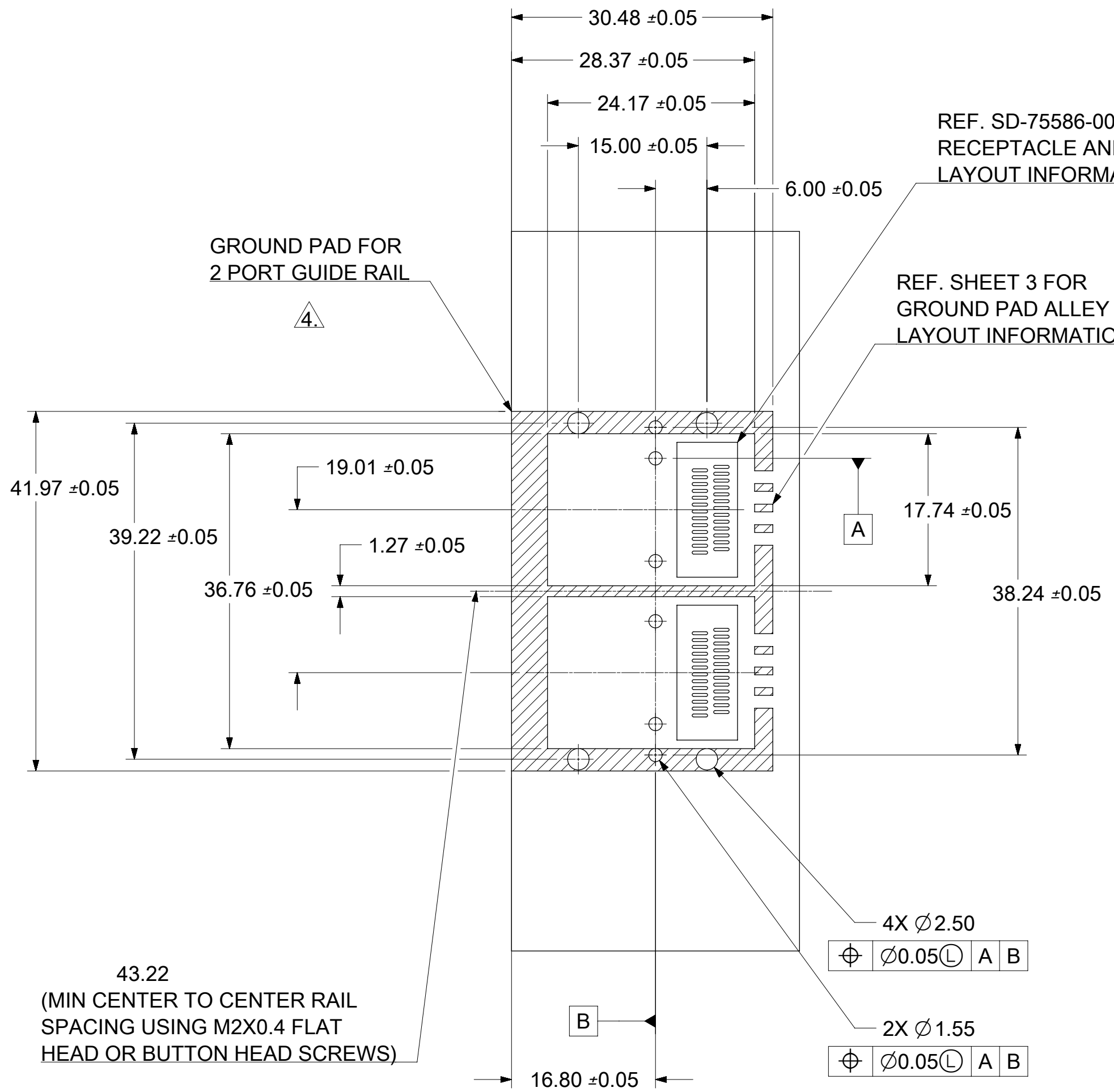
DOC PART: ASY

REVISION: G

MATERIAL NUMBER: SEE P/N TABLE

CUSTOMER: 111049

SHEET NUMBER: 1 OF 4

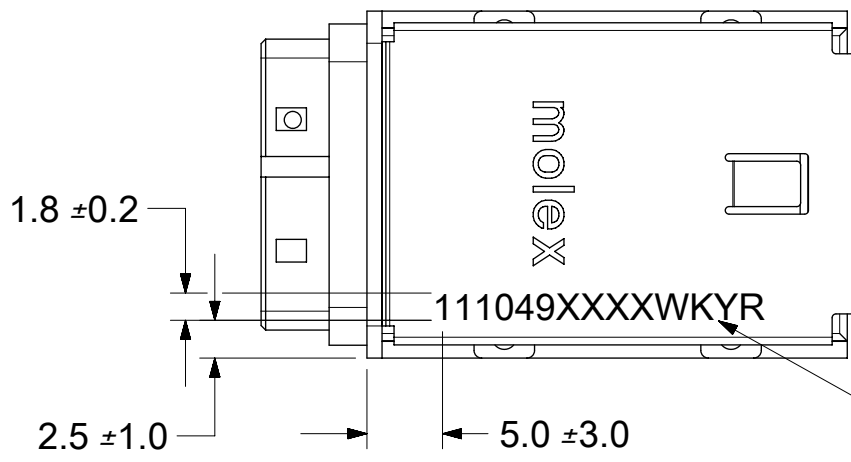
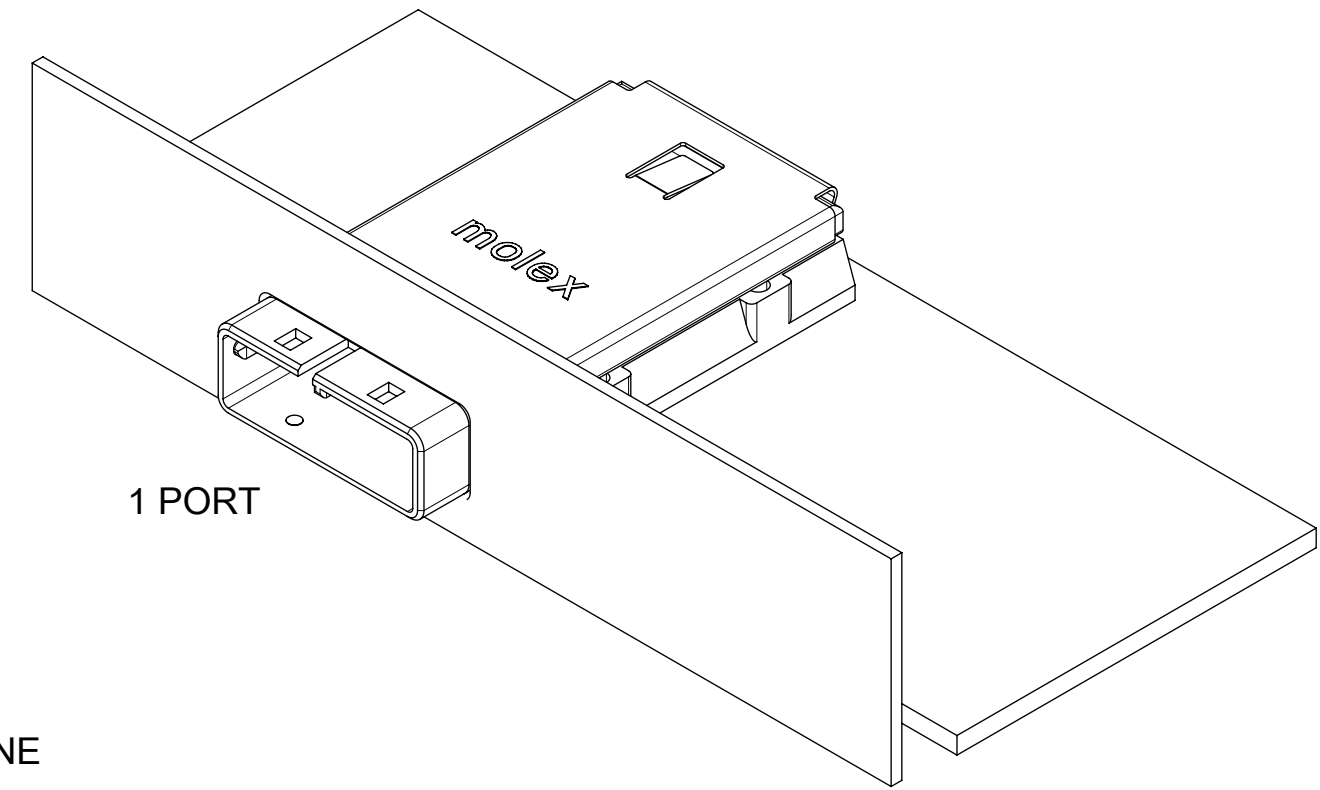
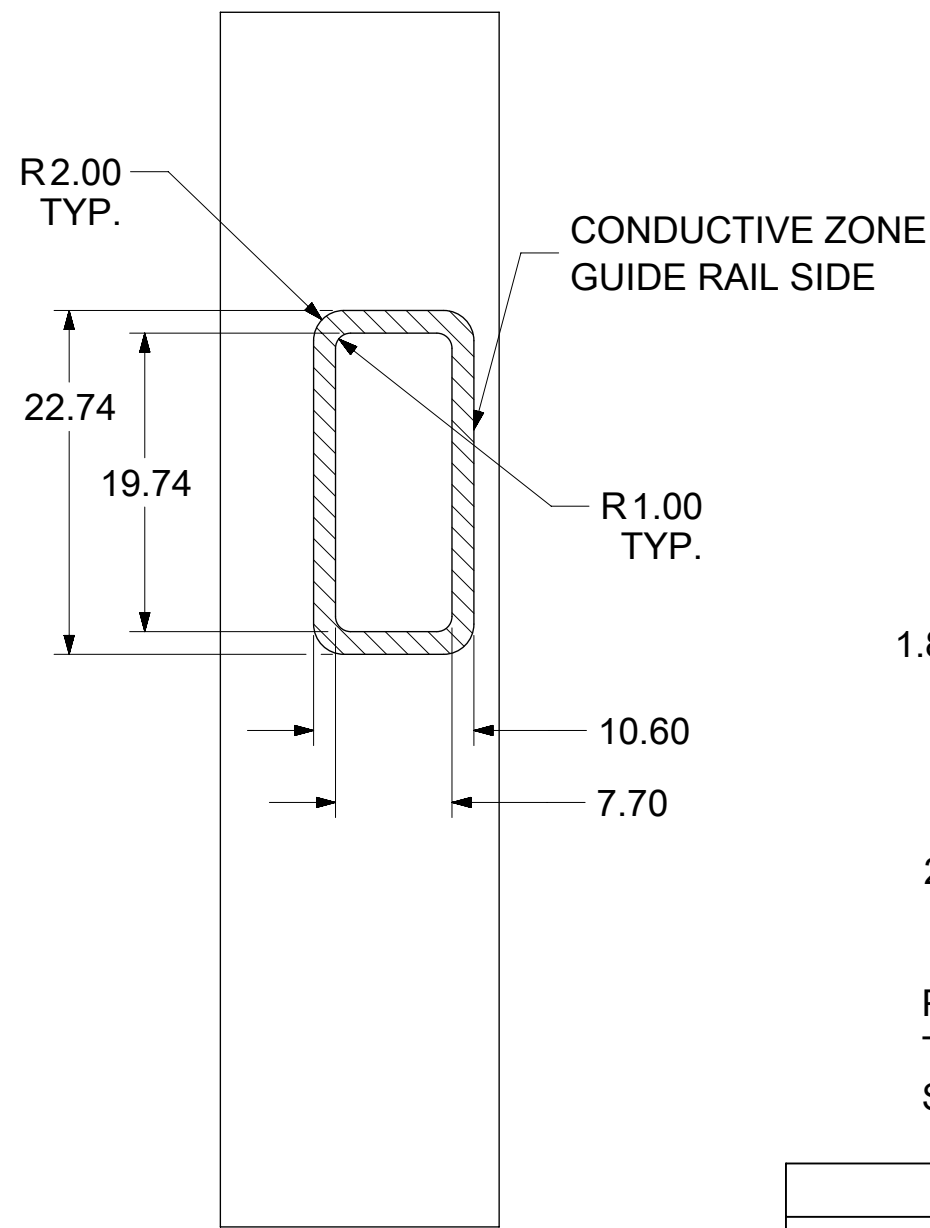
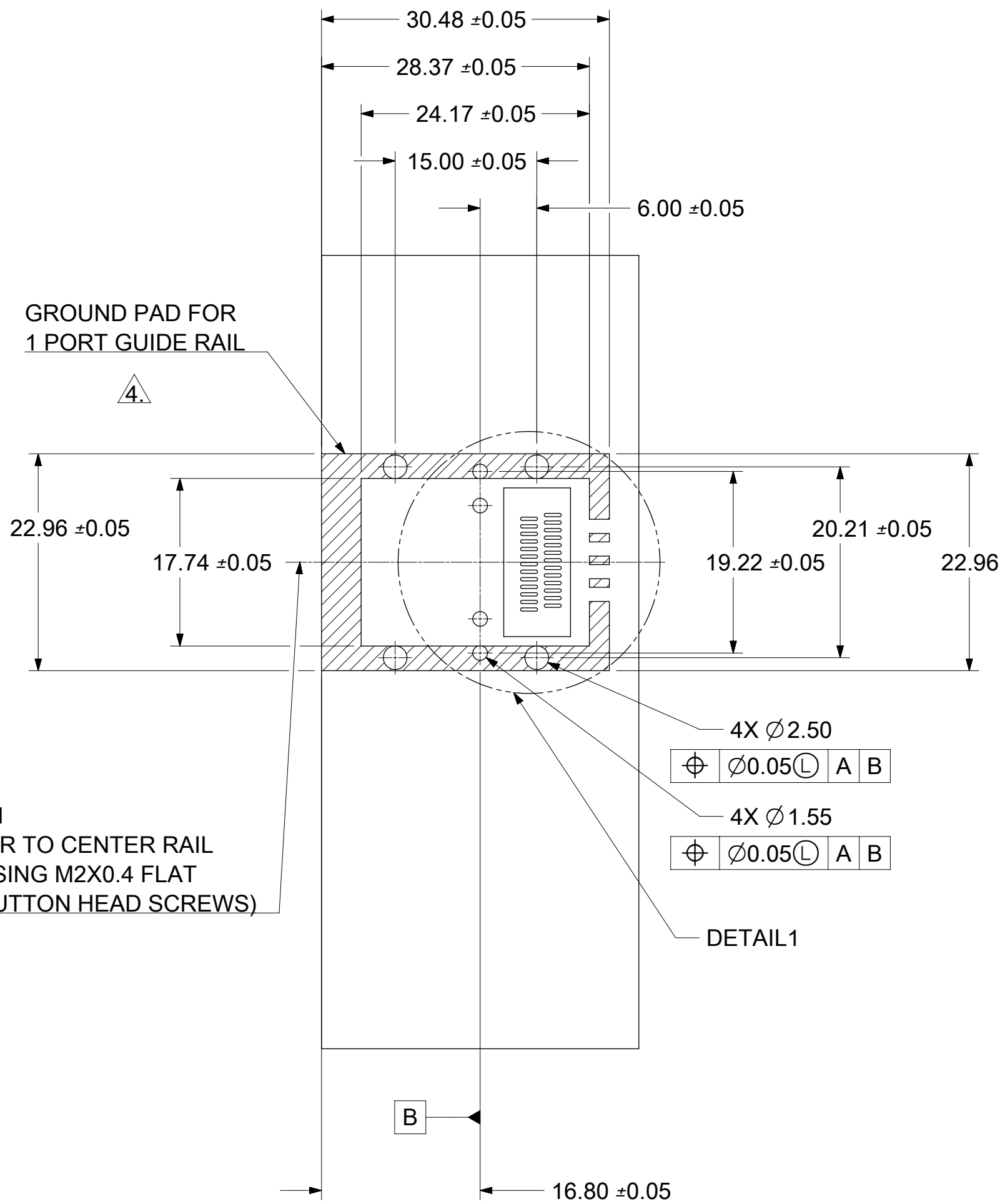


PART NO. AND WEEK/YEAR DATE CODE TO BE PRINTED ON TOP OF COVER APPROXIMATELY AS SHOWN. SEE TABLE BELOW FOR DATE CODE INFORMATION.

WEEK/YEAR DATE CODE TABLE	
WK	WEEK OF THE YEAR 01 THRU 52 (EXAMPLE: 01= FIRST WEEK OF YEAR 52= LAST WEEK OF YEAR)
YR	19, 20, 21 ETC.. (EXAMPLE: YEAR 2019= 19)

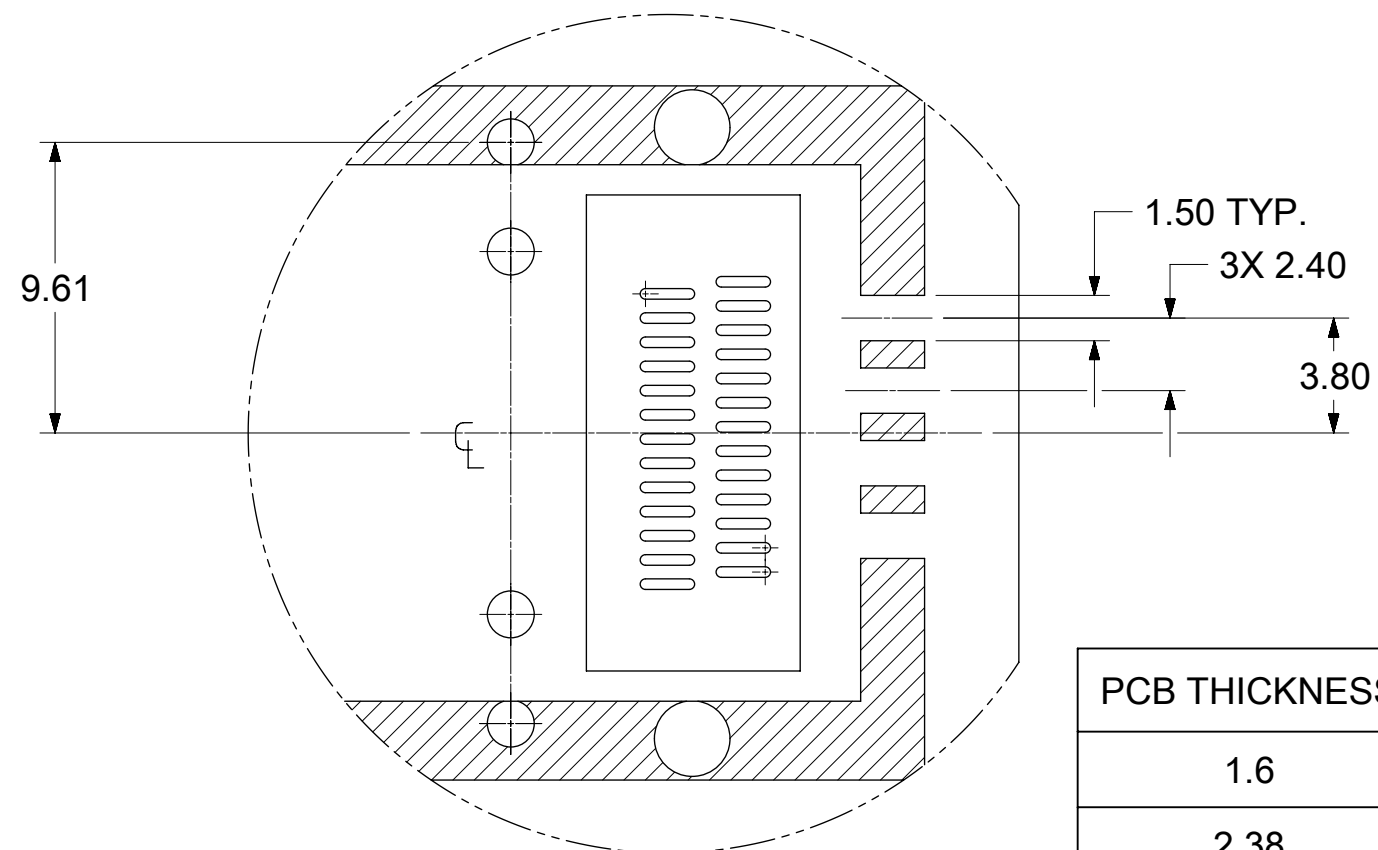
PART NUMBER	PORT SIZE	SW	OAW	KEY(S) PORT1	KEY(S) PORT2	IDENTIFIERS
1110490104	2	38.26	41.96	2,4	2,4	SAS OUT PORT/END DEVICE
1110490105	2	38.26	41.96	4,6	4,6	SAS IN PORT/END DEVICE
1110490106	2	38.26	41.96	4	4	SAS UNIVERSAL PORT
1110490110	2	38.26	41.96	2,4	4,6	SAS OUT PORT/SAS IN PORT
1110490121	2	38.26	41.96	6	6	SAS IN PORT

SYMBOLS	THIS DRAWING CONTAINS INFORMATION THAT IS PROPRIETARY TO MOLEX ELECTRONIC TECHNOLOGIES, LLC AND SHOULD NOT BE USED WITHOUT WRITTEN PERMISSION		CURRENT REV DESC: SEE REVISION TABLE	
	DIMENSION UNITS	SCALE		
▽ = 0	mm	2:1	DRWN: PMAHADEVAPPA 2018/12/20	IPASS SAS 2.0 26CKT GUIDE HOUSING ASSEMBLY 0 DEGREE, MULTIPOST
▽ = 0	GENERAL TOLERANCES (UNLESS SPECIFIED)		CHK'D: VK10 2019/01/11	
▽ = 0	ANGULAR TOL ± 1.0°		APPR: RCHEN08 2019/01/15	PRODUCT CUSTOMER DRAWING
▽ = 0	4 PLACES ±		INITIAL REVISION:	DOCUMENT NUMBER
▽ = 0	3 PLACES ±		DRWN: PMAHADEVAPPA 2018/12/20	1110490010
▽ = 0	2 PLACES ± 0.13		APPR: RCHEN08 2019/01/15	DOC TYPE
▽ = 0	1 PLACE ± 0.25		THIRD ANGLE PROJECTION	PSD
▽ = 0	0 PLACES ±		DRAWING	ASY
⊗ = 0	DRAFT WHERE APPLICABLE MUST REMAIN WITHIN DIMENSIONS		SERIES	G
■ = 0	THIRD ANGLE PROJECTION		C-SIZE	111049
▽ = 0	DRAFT WHERE APPLICABLE MUST REMAIN WITHIN DIMENSIONS		MATERIAL NUMBER	SEE P/N TABLE
			CUSTOMER	
			SHEET NUMBER	2 OF 4



PART NO. AND WEEK/YEAR DATE CODE TO BE PRINTED ON TOP OF COVER APPROXIMATELY AS SHOWN. SEE TABLE BELOW FOR DATE CODE INFORMATION.

WEEK/YEAR DATE CODE TABLE	
WK	WEEK OF THE YEAR 01 THRU 52 (EXAMPLE: 01= FIRST WEEK OF YEAR 52= LAST WEEK OF YEAR)
YR	19, 20, 21 ETC.. (EXAMPLE: YEAR 2019= 19)



DETAIL1  
SCALE 4:1

PCB THICKNESS	SCREW LENGTH	TORQUE(IN LBS)
1.6	5MM	2.3
2.38	6MM	2.3
3.2	6MM	2.3
X	+4MM MAX	2.3

PART NUMBER	PORT SIZE	SW	OAW	KEY(S)	IDENTIFIERS
1110490101	1	19.24	22.95	2,4	SAS OUT PORT/END DEVICE
1110490102	1	19.24	22.95	4,6	SAS IN PORT/END DEVICE
1110490103	1	19.24	22.95	4	SAS UNIVERSAL PORT
1110490120	1	19.24	22.95	2	SAS OUT PORT
1110490401	1	19.24	22.95	4	SAS UNIVERSAL PORT WITH 6MM SCREWS

SYMBOLS		THIS DRAWING CONTAINS INFORMATION THAT IS PROPRIETARY TO MOLEX ELECTRONIC TECHNOLOGIES, LLC AND SHOULD NOT BE USED WITHOUT WRITTEN PERMISSION		CURRENT REV DESC: SEE REVISION TABLE	
▽ = 0	DIMENSION UNITS	SCALE	EC NO: 610316		
▽ = 0	mm	2:1	DRWN: PMAHADEVAPPA 2018/12/20		
▽ = 0	GENERAL TOLERANCES (UNLESS SPECIFIED)		CHK'D: VK10 2019/01/11		
▽ = 0	ANGULAR TOL ± 1.0°		APPR: RCHEN08 2019/01/15		
▽ = 0	4 PLACES ±		INITIAL REVISION:		
▽ = 0	3 PLACES ±		DRWN: PMAHADEVAPPA 2018/12/20		
▽ = 0	2 PLACES ± 0.13		APPR: RCHEN08 2019/01/15		
▽ = 0	1 PLACE ± 0.25		MATERIAL NUMBER		
▽ = 0	0 PLACES ±		CUSTOMER		
▽ = 0	DRAFT WHERE APPLICABLE MUST REMAIN WITHIN DIMENSIONS		THIRD ANGLE PROJECTION	DRAWING	SERIES
▽ = 0			C-SIZE	111049	SEE P/N TABLE

**molex**

IPASS SAS 2.0 26CKT  
GUIDE HOUSING ASSEMBLY 0 DEGREE, MULTI PORT

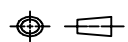
PRODUCT CUSTOMER DRAWING

DOCUMENT NUMBER	DOC TYPE	DOC PART	REVISION
1110490010	PSD	ASY	G

MATERIAL NUMBER	CUSTOMER	SHEET NUMBER
SEE P/N TABLE		3 OF 4

REVISION HISTORY

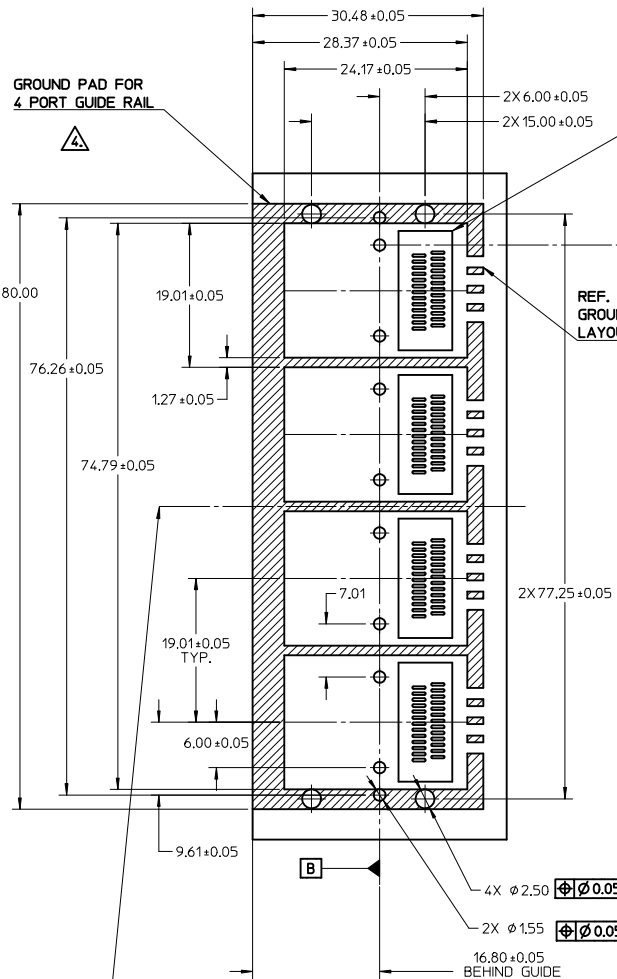
DATE	REV	DESCRIPTION
2015/01/30	F	1. ADDED "MM 3D MODEL: EM-111049-010 (SD_PACKAGE)" ON LEFT TOP CORNER. [SHT 1] 2. NOTE 6 CHANGED AS "NO RoHS EXEMPTIONS". [SHT 1] 3. ADDED P/N:111049-0401 INTO P/N TABLE. [SHT 3]
2018/12/20	G	1. REMASTERED FROM SD-111049-010 REV_F TO 1110490010 PSD ASY REV_G IN NX/ECTR. 2. SHEET 1: F: 3: VIEW ADDED FOR DATE CODE REPRESENTATION. 3. SHEET 2: E: 2: VIEW ADDED FOR DATE CODE REPRESENTATION. 4. SHEET 3: F: 3: VIEW ADDED FOR DATE CODE REPRESENTATION.

<b>SYMBOLS</b> DIMENSION UNITS: <b>mm</b> SCALE: <b>2:1</b> = 0 = 0 = 0 = 0 = 0 = 0 = 0 = 0 = 0 = 0 = 0	THIS DRAWING CONTAINS INFORMATION THAT IS PROPRIETARY TO MOLEX ELECTRONIC TECHNOLOGIES, LLC AND SHOULD NOT BE USED WITHOUT WRITTEN PERMISSION		
	GENERAL TOLERANCES (UNLESS SPECIFIED) ANGULAR TOL $\pm 1.0^\circ$		
	= 0 4 PLACES $\pm$ = 0 3 PLACES $\pm$ = 0 2 PLACES $\pm 0.13$ = 0 1 PLACE $\pm 0.25$ = 0 0 PLACES $\pm$ = 0 DRAFT WHERE APPLICABLE MUST REMAIN WITHIN DIMENSIONS	CURRENT REV DESC: SEE REVISION TABLE  EC NO: 610316 DRWN: PMAHADEVAPPA 2018/12/20 CHK'D: VK10 2019/01/11 APPR: RCHEN08 2019/01/15	
	INITIAL REVISION: DRWN: PMAHADEVAPPA 2018/12/20 APPR: RCHEN08 2019/01/15		DOCUMENT NUMBER <b>1110490010</b>
	THIRD ANGLE PROJECTION 	DRAWING <b>C-SIZE</b>	SERIES <b>111049</b>
	MATERIAL NUMBER SEE P/N TABLE	CUSTOMER	DOC TYPE   DOC PART   REVISION <b>PSD   ASY   G</b>
	SHEET NUMBER <b>4 OF 4</b>		

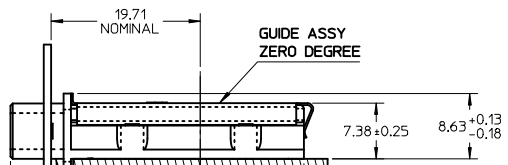


IPASS SAS 2.0 26CKT  
GUIDE HOUSING ASSEMBLY 0 DEGREE, MULTIPOINT

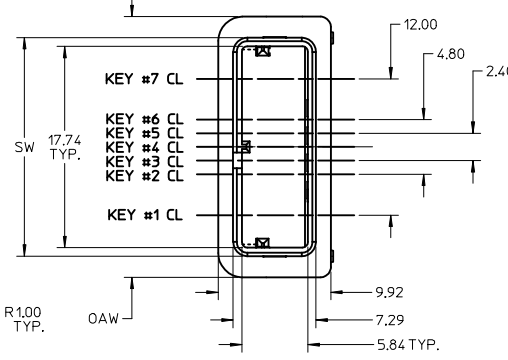
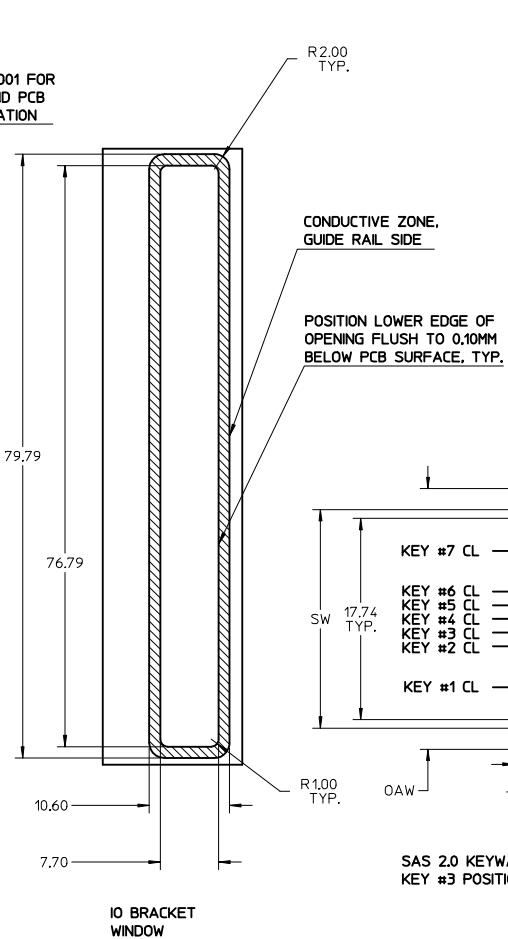
PRODUCT CUSTOMER DRAWING



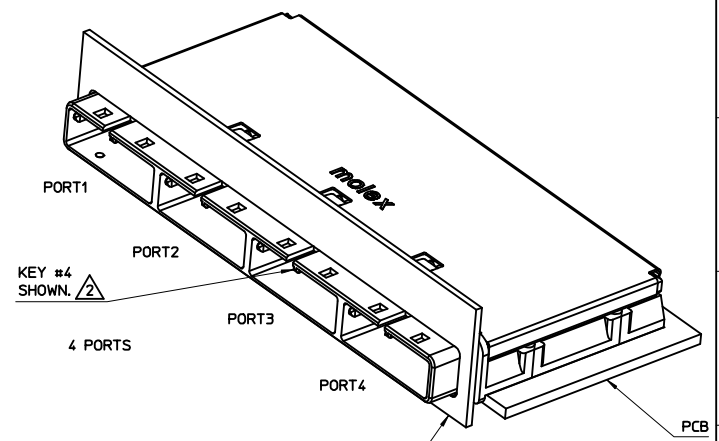
(MIN CENTER TO CENTER RAIL SPACING USING M2X0.4 FLAT HEAD OR BUTTON HEAD SCREWS)



EMI GASKET NOT SHOWN FOR CLARITY  
SAS 4 PORT GUIDE HOUSING ASSEMBLY



SAS 2.0 KEYWAY IN KEY #3 POSITION



NOTES:

1. PCB AND BRACKET SHOWN FOR REFERENCE ONLY.
2. REF. SD-74547-100 FOR KEY POSITIONS
3. GUIDE HOUSING MOUNTING THREAD= M2 X 0.40, SEE SHEET 3 FOR SCREW LENGTH + TORQUE SPEC.
4. PLATE GROUND PAD WITH EMERSION SILVER OR GOLD.
5. MATERIAL:  
GUIDE HOUSING - ZINC DIECAST, NICKEL PLATED.  
COVER - STAINLESS STEEL.  
GASKET - CONDUCTIVE ELASTOMER.
6. NO RoHS EXEMPTIONS.
7. GUIDE HOUSING PEGS FOR ALIGNMENT ONLY, DO NOT SOLDER.

PART NUMBER	PORT SIZE	SW	DAW	KEY(S) PORT1	KEY(S) PORT2	KEY(S) PORT3	KEY(S) PORT4	IDENTIFIERS
1110490107	4	76.30	80.00	2,4	2,4	2,4	2,4	SAS OUT PORT/END DEVICE
1110490108	4	76.30	80.00	4,6	4,6	4,6	4,6	SAS IN PORT/END DEVICE
1110490109	4	76.30	80.00	4	4	4	4	SAS UNIVERSAL PORT

REV	DESCRIPTION	DATE	APPROVED
1	DRW:WLLU20	2015/01/29	
2	CHKD:SYANG16	2015/02/06	
3	APPR:RCHEM08	2015/05/18	

GENERAL TOLERANCES (UNLESS SPECIFIED)

	mm	INCH
4 PLACES	± 0.13	± 0.005
3 PLACES	± 0.25	± 0.010
2 PLACES	± 0.38	± 0.015
1 PLACE	± 0.51	± 0.020
0 PLACE	± 0.64	± 0.025

ANGULAR ± 1°

DRAFT WHERE APPLICABLE MUST REMAIN WITHIN DIMENSIONS

DIMENSION STYLE: MM ONLY

SCALE: 2:1

DESIGN UNITS: METRIC

THIRD ANGLE PROJECTION

DRAWN BY: BREED DATE: 2008/10/07

CHECKED BY: DDOYE DATE: 2008/10/07

APPROVED BY: DDOYE DATE: 2008/10/07

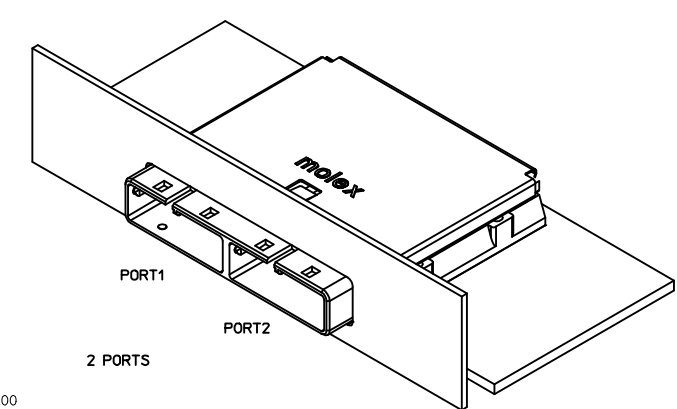
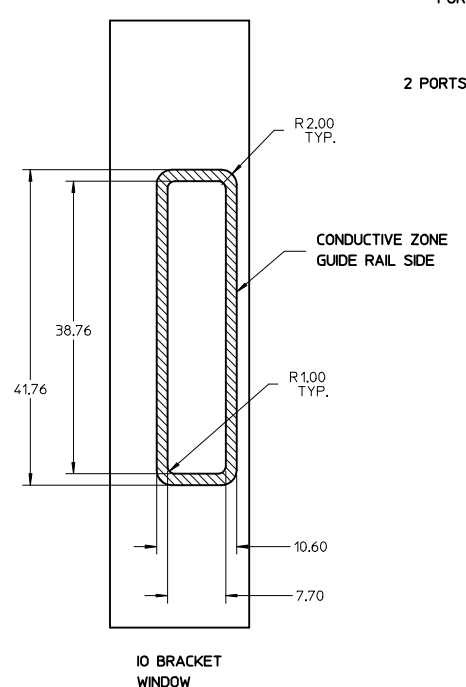
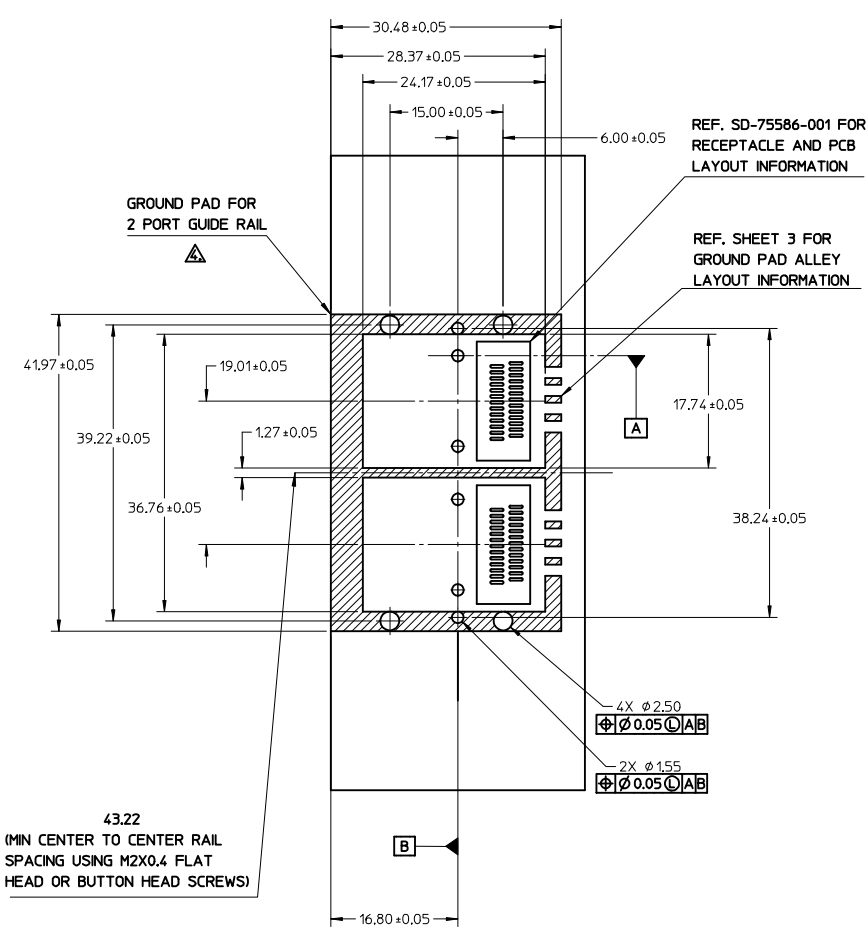
MATERIAL NO. SEE P/N TABLE

TITLE: IPASS SAS 2.0 26CKT GUIDE HOUSING ASSEMBLY 0 DEGREE, MULTIPORT

**molex**

DOCUMENT NO. SD-111049-010 SHEET NO. 1 OF 4

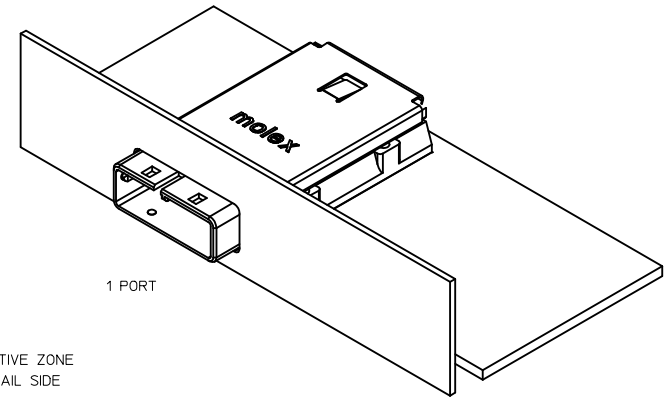
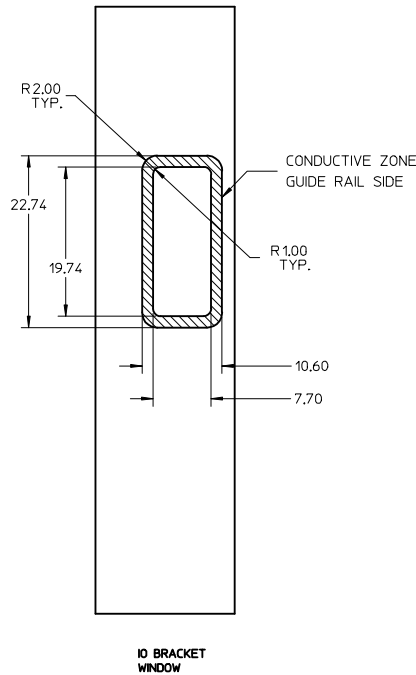
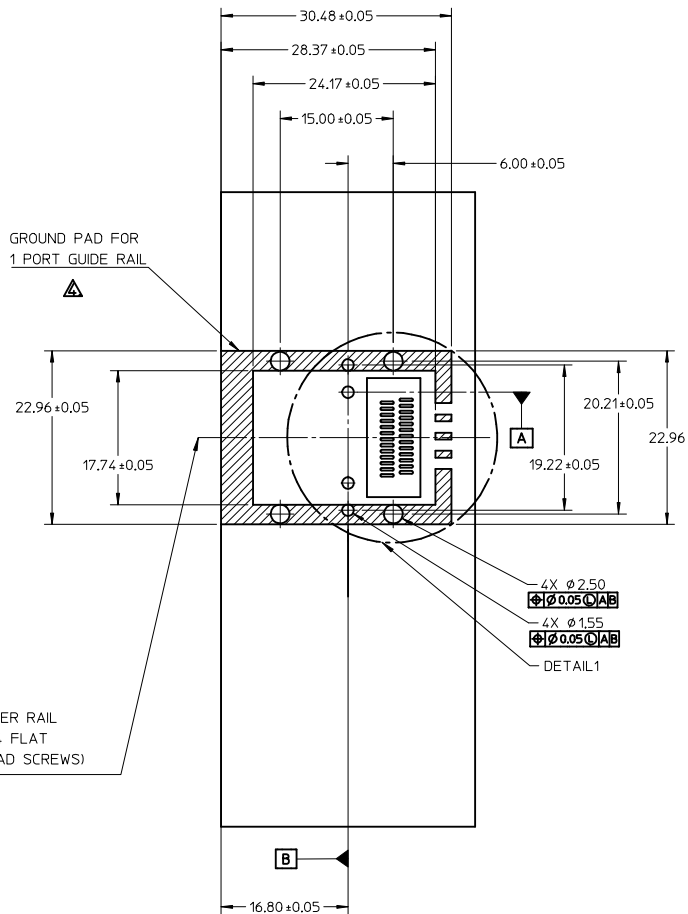
THIS DRAWING CONTAINS INFORMATION THAT IS PROPRIETARY TO MOLEX INCORPORATED AND SHOULD NOT BE USED WITHOUT WRITTEN PERMISSION



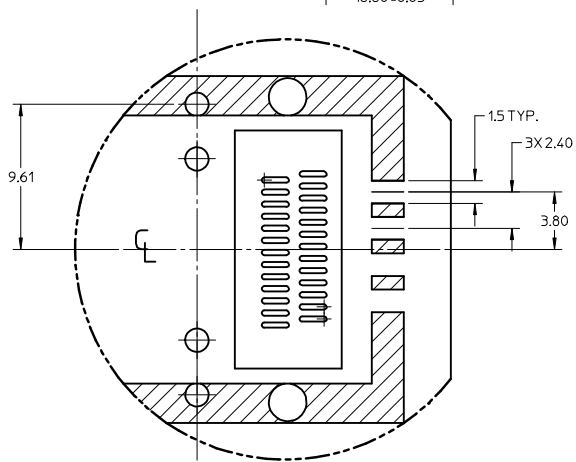
PART NUMBER	PORT SIZE	SW	OAW	KEY(S) PORT1	KEY(S) PORT2	IDENTIFIERS
1110490104	2	38.26	41.96	2.4	2.4	SAS OUT PORT/END DEVICE
1110490105	2	38.26	41.96	4.6	4.6	SAS IN PORT/END DEVICE
1110490106	2	38.26	41.96	4	4	SAS UNIVERSAL PORT
1110490110	2	38.26	41.96	2.4	4.6	SAS OUT PORT/SAS IN PORT
1110490121	2	38.26	41.96	6	6	SAS IN PORT

<b>SEE REVISION TABLE</b> EC NO: CFG2015-4013 TIDRWNLU20 2015/01/29 CHKD:SYANG16 2015/02/06 APPR:RCHEN08 2015/05/18	QUALITY SYMBOLS 	GENERAL TOLERANCES (UNLESS SPECIFIED)		DIMENSION STYLE <b>MM ONLY</b>		SCALE 2:1	DESIGN UNITS METRIC	THIRD ANGLE PROJECTION	
		4 PLACES ± --- ± --- 3 PLACES ± --- ± --- 2 PLACES ± 0.13 ± --- 1 PLACE ± 0.25 ± --- 0 PLACE ± --- ± ---	mm INCH ± --- ± --- ± --- ± --- ± --- ± --- ± --- ± ---	DRAWN BY BREED	DATE 2008/10/07	TITLE IPASS SAS 2.0 26CKT GUIDE HOUSING ASSEMBLY 0 DEGREE, MULTIPORT			
		ANGULAR ± 1 °		CHECKED BY DDOYE	DATE 2008/10/07	DOCUMENT NO. <b>molex</b> SD-111049-010			
		DRAFT WHERE APPLICABLE MUST REMAIN WITHIN DIMENSIONS		APPROVED BY DDOYE		DATE 2008/10/07	SHEET NO. 2 OF 4		

SEE P/N TABLE  
 THIS DRAWING CONTAINS INFORMATION THAT IS PROPRIETARY TO MOLEX INCORPORATED AND SHOULD NOT BE USED WITHOUT WRITTEN PERMISSION



24.21  
(MIN CENTER TO CENTER RAIL  
SPACING USING M2X0.4 FLAT  
HEAD OR BUTTON HEAD SCREWS)



DETAIL1  
SCALE 4:1

PCB THICKNESS	SCREW LENGTH	TORQUE (IN LBS)
1.6 (.063')	5MM	2.3
2.38 (.093')	6MM	2.3
3.2 (.125')	6MM	2.3
X	+4MM MAX	2.3

PART NUMBER	PORT SIZE	SW	OAW	KEY(S)	IDENTIFIERS
1110490101	1	19.24	22.95	2.4	SAS OUT PORT/END DEVICE
1110490102	1	19.24	22.95	4.6	SAS IN PORT/END DEVICE
1110490103	1	19.24	22.95	4	SAS UNIVERSAL PORT
1110490120	1	19.24	22.95	2	SAS OUT PORT
1110490401	1	19.24	22.95	4	SAS UNIVERSAL PORT WITH 6MM SCREWS

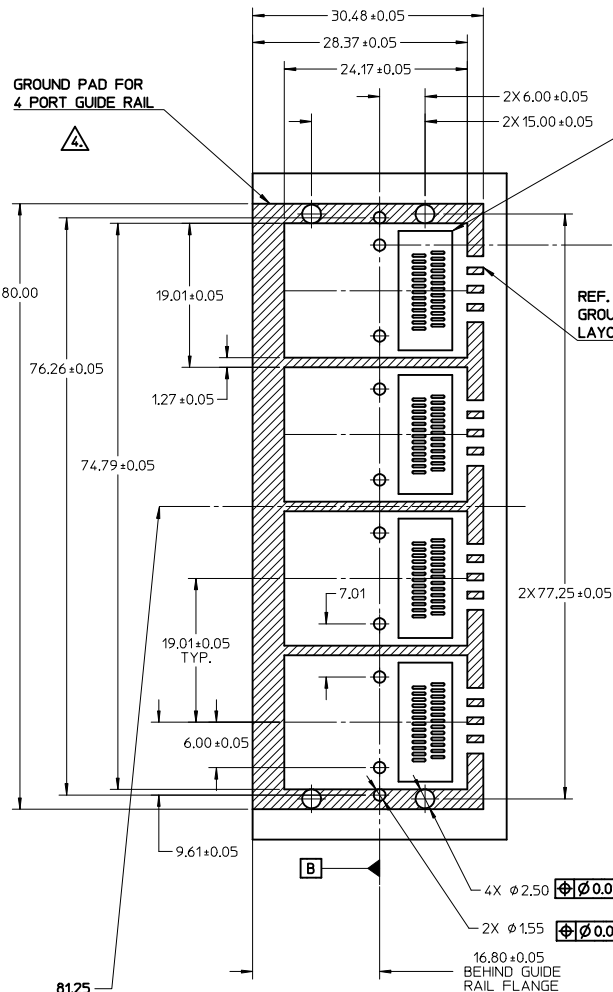
<b>SEE REVISION TABLE</b> EC NO: CPG2015-4013 TDR:WILLU20 2015/01/29 CHKD:SYANG16 2015/02/06 APPR:RCHEN08 2015/05/18	QUALITY SYMBOLS ▽=0 ▽=0 ▽=0	GENERAL TOLERANCES (UNLESS SPECIFIED)		DIMENSION STYLE <b>MM ONLY</b>		SCALE 2:1	DESIGN UNITS METRIC	THIRD ANGLE PROJECTION	
		4 PLACES ± --- ± --- 3 PLACES ± --- ± --- 2 PLACES ± 0.13 ± --- 1 PLACE ± 0.25 ± --- 0 PLACE ± --- ± ---	mm INCH DRAWN BY DATE BREED 2008/10/07 CHECKED BY DATE DDOYE 2008/10/07 APPROVED BY DATE DDOYE 2008/10/07	TITLE IPASS SAS 2.0 26CKT GUIDE HOUSING ASSEMBLY 0 DEGREE, MULTI PORT		MATERIAL NO. DOCUMENT NO. <b>SD-111049-010</b>		SHEET NO. 3 OF 4	
		ANGULAR ± 1 °		<b>SEE P/N TABLE</b>		THIS DRAWING CONTAINS INFORMATION THAT IS PROPRIETARY TO MOLEX INCORPORATED AND SHOULD NOT BE USED WITHOUT WRITTEN PERMISSION			
		DRAFT WHERE APPLICABLE MUST REMAIN WITHIN DIMENSIONS		MoLEX					

REVISION HISTORY

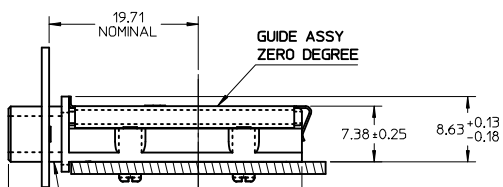
DATE	REV	DESCRIPTION
2015/01/30	F	1. ADDED *MM 3D MODEL: EM-111049-010 (SD_PACKAGE)* ON LEFT TOP CORNER. [SHT 1] 2. NOTE 6 CHANGED AS *NO RoHS EXEMPTIONS*. [SHT 1] 3. ADDED P/N:111049-0401 INTO P/N TABLE. [SHT 3]

<b>SEE REVISION TABLE</b> EC NO: CFG2015-4013 2015/01/29 DRWN:LU20 CHKD:SYANG16 2015/02/06 APPR:RCHEM08 2015/05/18	QUALITY SYMBOLS ▽=0 ▽=0 ▽=0	GENERAL TOLERANCES (UNLESS SPECIFIED)		DIMENSION STYLE MM ONLY		SCALE	DESIGN UNITS METRIC	THIRD ANGLE PROJECTION		
				DRAWN BY	DATE	TITLE				
				BREED	2008/10/07	IPASS SAS 2.0 26CKT GUIDE HOUSING ASSEMBLY 0 DEGREE, MULTIPOST				
				CHECKED BY	DATE	molex				
				DDOYE	2008/10/07	DOCUMENT NO. SD-111049-010				
		APPROVED BY		DATE		SHEET NO. 4 OF 4				
		DDOYE		2008/10/07		THIS DRAWING CONTAINS INFORMATION THAT IS PROPRIETARY TO MOLEX INCORPORATED AND SHOULD NOT BE USED WITHOUT WRITTEN PERMISSION				
		ANGULAR ± 1°		MATERIAL NO.		SIZE				
		DRAFT WHERE APPLICABLE MUST REMAIN WITHIN DIMENSIONS		SEE P/N TABLE						



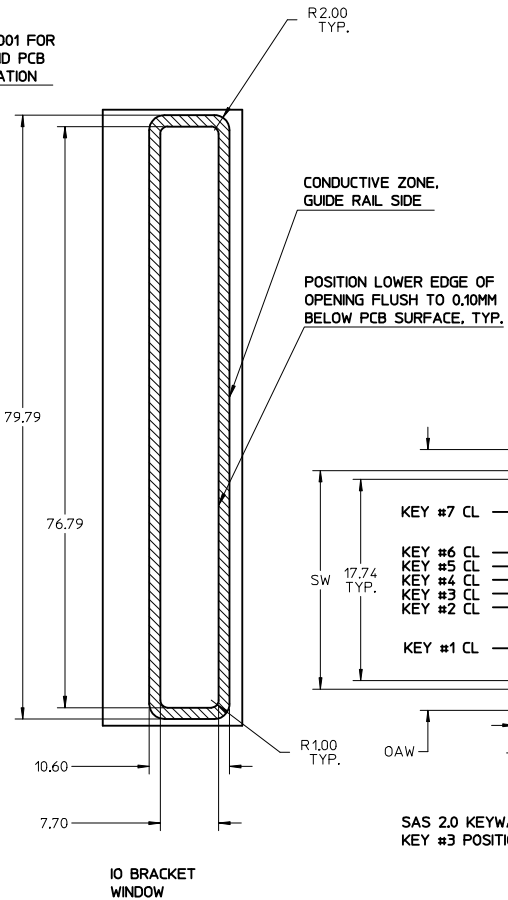


(MIN CENTER TO CENTER RAIL SPACING USING M2X0.4 FLAT HEAD OR BUTTON HEAD SCREWS)

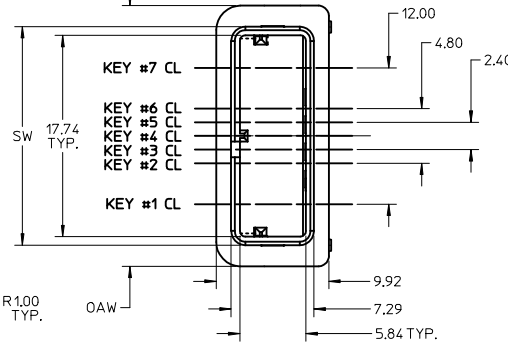


EMI GASKET NOT SHOWN FOR CLARITY

SAS 4 PORT GUIDE HOUSING ASSEMBLY



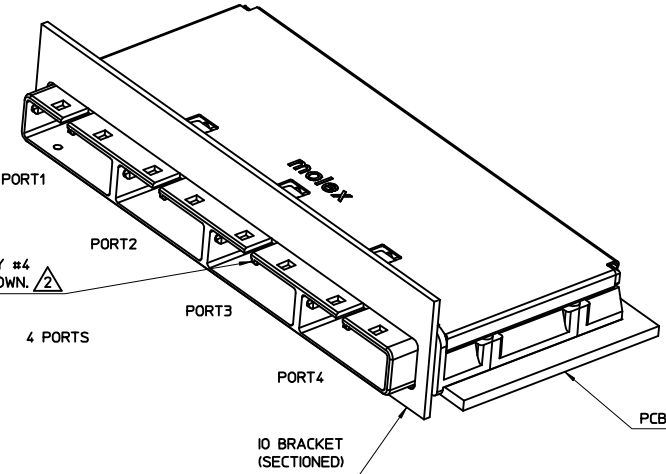
IO BRACKET WINDOW



SAS 2.0 KEYWAY IN KEY #3 POSITION

NOTES:

1. PCB AND BRACKET SHOWN FOR REFERENCE ONLY.
2. REF. SD-74547-100 FOR KEY POSITIONS.
3. GUIDE HOUSING MOUNTING THREAD= M2 X 0.40, SEE SHEET 3 FOR SCREW LENGTH + TORQUE SPEC.
4. PLATE GROUND PAD WITH EMERSON SILVER OR GOLD.
5. MATERIAL:  
GUIDE HOUSING - ZINC DIECAST, NICKEL PLATED.  
COVER - STAINLESS STEEL.  
GASKET - CONDUCTIVE ELASTOMER.
6. NO RoHS EXEMPTIONS.
7. GUIDE HOUSING PEGS FOR ALIGNMENT ONLY, DO NOT SOLDER.



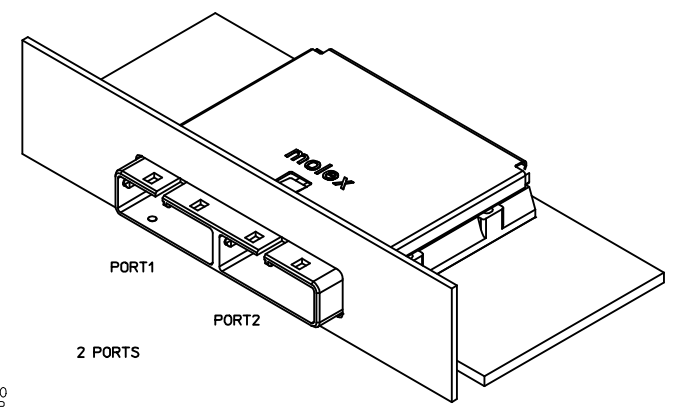
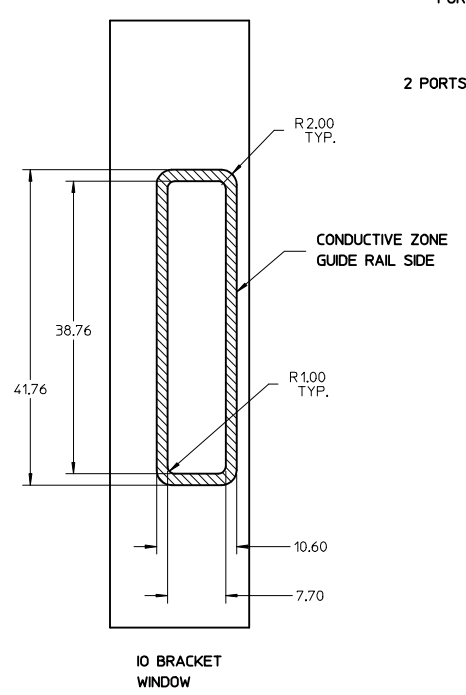
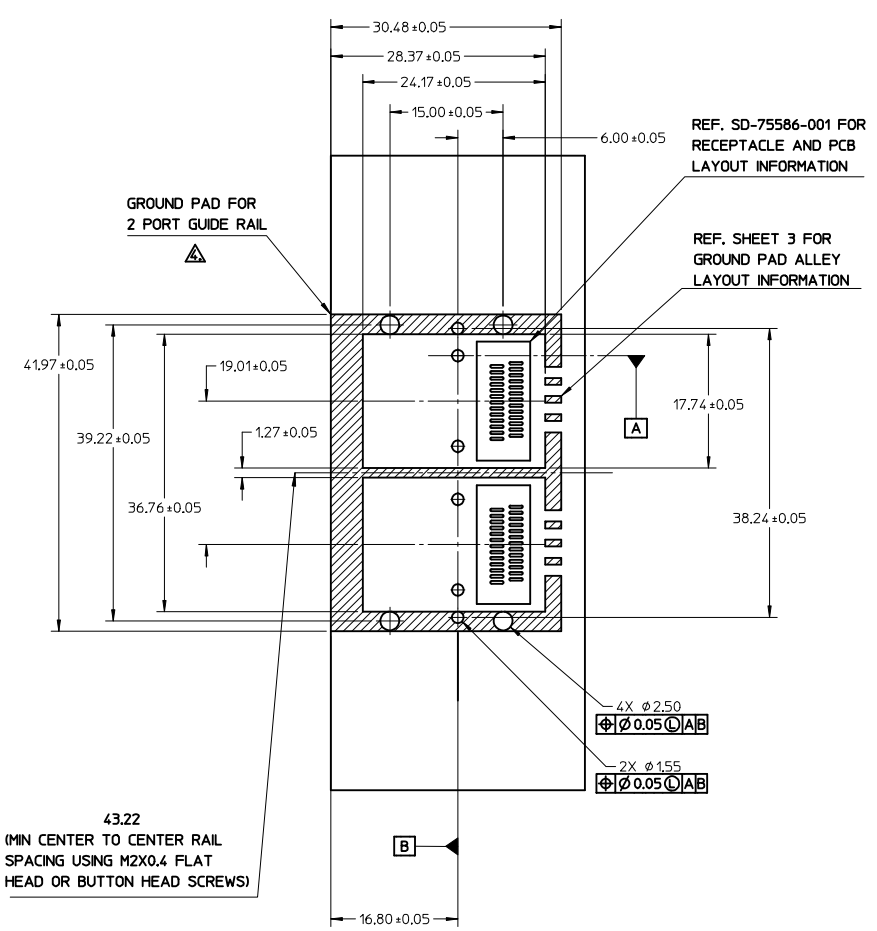
PART NUMBER	PORT SIZE	SW	DAW	KEY(S) PORT1	KEY(S) PORT2	KEY(S) PORT3	KEY(S) PORT4	IDENTIFIERS
1110490107	4	76.30	80.00	2,4	2,4	2,4	2,4	SAS OUT PORT/END DEVICE
1110490108	4	76.30	80.00	4,6	4,6	4,6	4,6	SAS IN PORT/END DEVICE
1110490109	4	76.30	80.00	4	4	4	4	SAS UNIVERSAL PORT

<b>SEE REVISION TABLE</b> EC NO: CPG2015-4013 DRW: LUL20 CHKD: SYANG16 APPR: RCHEN08	2015/01/29 2015/02/06 2015/05/18	QUALITY SYMBOLS ▽ = 0 ▽ = 0 ▽ = 0
--	--	--

GENERAL TOLERANCES (UNLESS SPECIFIED)  
mm INCH  
4 PLACES ± --- ± ---  
3 PLACES ± --- ± ---  
2 PLACES ± 0.13 ± ---  
1 PLACE ± 0.25 ± ---  
0 PLACE ± --- ± ---  
ANGULAR ± 1°  
DRAFT WHERE APPLICABLE MUST REMAIN WITHIN DIMENSIONS

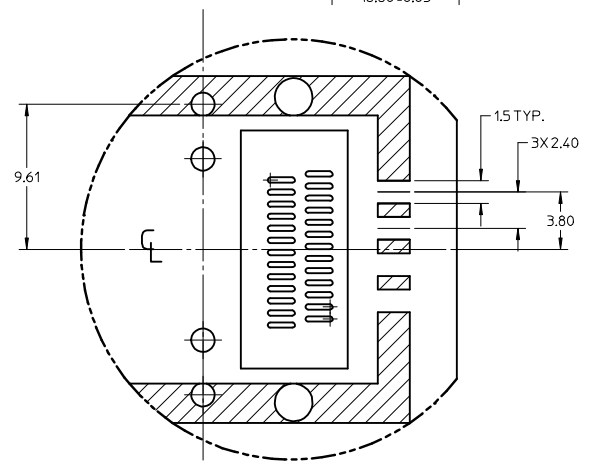
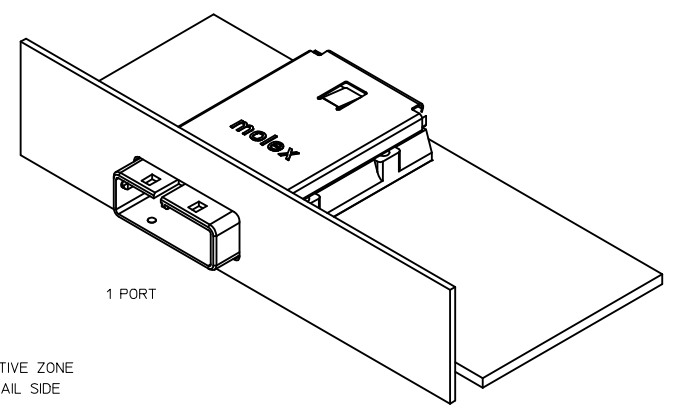
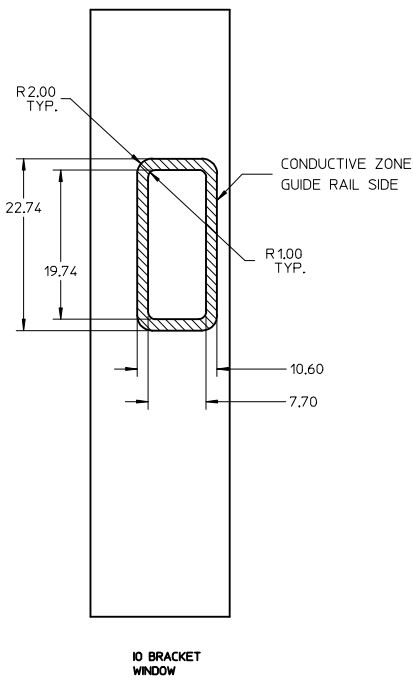
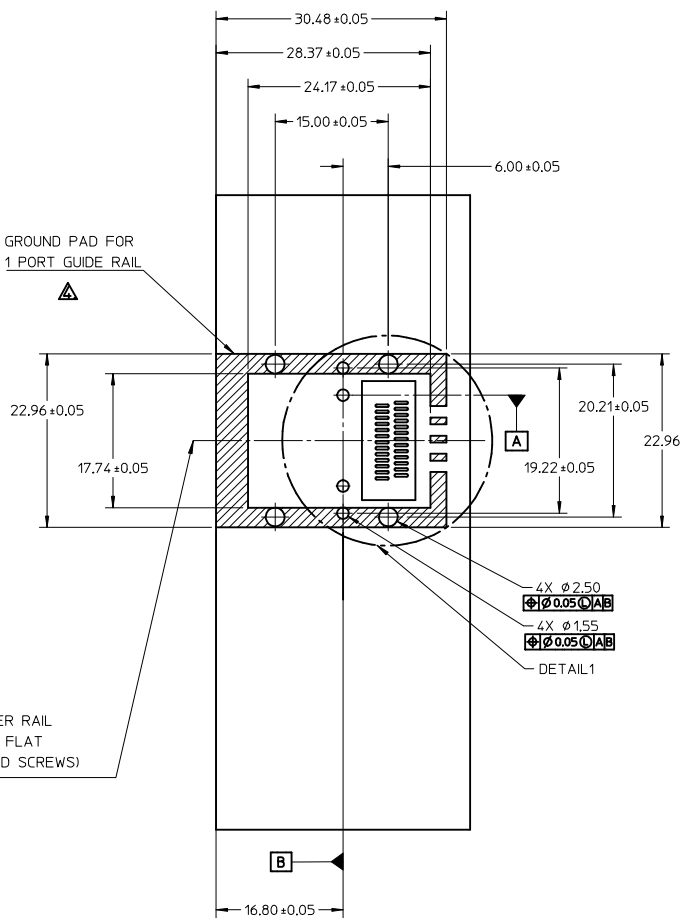
DIMENSION STYLE <b>MM ONLY</b>	SCALE <b>2:1</b>
DRAWN BY BREED	DATE 2008/10/07
CHECKED BY DDOYE	DATE 2008/10/07
APPROVED BY DDOYE	DATE 2008/10/07
MATERIAL NO. <b>SEE P/N TABLE</b>	DOCUMENT NO. <b>SD-111049-010</b>
SIZE <b>C</b>	SHEET NO. <b>1 OF 4</b>

THIRD ANGLE PROJECTION  
IPASS SAS 2.0 26CKT  
GUIDE HOUSING ASSEMBLY  
0 DEGREE, MULTI PORT  
**molex**  
THIS DRAWING CONTAINS INFORMATION THAT IS PROPRIETARY TO MOLEX INCORPORATED AND SHOULD NOT BE USED WITHOUT WRITTEN PERMISSION



PART NUMBER	PORT SIZE	SW	OAW	KEY(S) PORT1	KEY(S) PORT2	IDENTIFIERS
1110490104	2	38.26	41.96	2.4	2.4	SAS OUT PORT/END DEVICE
1110490105	2	38.26	41.96	4.6	4.6	SAS IN PORT/END DEVICE
1110490106	2	38.26	41.96	4	4	SAS UNIVERSAL PORT
1110490110	2	38.26	41.96	2.4	4.6	SAS OUT PORT/SAS IN PORT
1110490121	2	38.26	41.96	6	6	SAS IN PORT

<b>SEE REVISION TABLE</b> EC NO: CFG2015-4013 2015/01/29 TDRWNLU20 2015/02/06 CHKD:SYANG16 2015/02/06 APPR:RGHE08 2015/05/18	QUALITY SYMBOLS 	GENERAL TOLERANCES (UNLESS SPECIFIED) <table border="1"> <thead> <tr> <th></th> <th>mm</th> <th>INCH</th> </tr> </thead> <tbody> <tr> <td>4 PLACES</td> <td>± ---</td> <td>± ---</td> </tr> <tr> <td>3 PLACES</td> <td>± ---</td> <td>± ---</td> </tr> <tr> <td>2 PLACES</td> <td>± 0.13</td> <td>± ---</td> </tr> <tr> <td>1 PLACE</td> <td>± 0.25</td> <td>± ---</td> </tr> <tr> <td>0 PLACE</td> <td>± ---</td> <td>± ---</td> </tr> </tbody> </table>		mm	INCH	4 PLACES	± ---	± ---	3 PLACES	± ---	± ---	2 PLACES	± 0.13	± ---	1 PLACE	± 0.25	± ---	0 PLACE	± ---	± ---	DIMENSION STYLE <b>MM ONLY</b> DRAWN BY DATE BREED 2008/10/07 CHECKED BY DATE DDOYE 2008/10/07 APPROVED BY DATE DDOYE 2008/10/07	SCALE <b>2:1</b> DESIGN UNITS <b>METRIC</b> THIRD ANGLE PROJECTION 	TITLE <b>IPASS SAS 2.0 26CKT GUIDE HOUSING ASSEMBLY 0 DEGREE, MULTI-PORT</b> <b>molex</b>
			mm	INCH																			
		4 PLACES	± ---	± ---																			
		3 PLACES	± ---	± ---																			
2 PLACES	± 0.13	± ---																					
1 PLACE	± 0.25	± ---																					
0 PLACE	± ---	± ---																					
MATERIAL NO. ANGULAR ± 1 ° DRAFT WHERE APPLICABLE MUST REMAIN WITHIN DIMENSIONS	SEE P/N TABLE SIZE C	DOCUMENT NO. <b>SD-111049-010</b>	SHEET NO. <b>2 OF 4</b>																				
THIS DRAWING CONTAINS INFORMATION THAT IS PROPRIETARY TO MOLEX INCORPORATED AND SHOULD NOT BE USED WITHOUT WRITTEN PERMISSION																							



PCB THICKNESS	SCREW LENGTH	TORQUE (IN LBS)
1.6 (.063')	5MM	2.3
2.38 (.093')	6MM	2.3
3.2 (.125')	6MM	2.3
X	+4MM MAX	2.3

PART NUMBER	PORT SIZE	SW	OAW	KEY(S)	IDENTIFIERS
1110490101	1	19.24	22.95	2,4	SAS OUT PORT/END DEVICE
1110490102	1	19.24	22.95	4,6	SAS IN PORT/END DEVICE
1110490103	1	19.24	22.95	4	SAS UNIVERSAL PORT
1110490120	1	19.24	22.95	2	SAS OUT PORT
1110490401	1	19.24	22.95	4	SAS UNIVERSAL PORT WITH 6MM SCREWS

<b>SEE REVISION TABLE</b> EC NO: CPG2015-4013 TDR:WINLU20 CHKD:SYANG16 APPR:RCHEN08	2015/01/29 2015/02/06 2015/05/18	QUALITY SYMBOLS ▽ = 0 ▽ = 0 ▽ = 0	GENERAL TOLERANCES (UNLESS SPECIFIED) mm INCH 4 PLACES ± --- ± --- 3 PLACES ± --- ± --- 2 PLACES ± 0.13 ± --- 1 PLACE ± 0.25 ± --- 0 PLACE ± --- ± ---	DIMENSION STYLE <b>MM ONLY</b> DRAWN BY DATE BREED 2008/10/07 CHECKED BY DATE DDOYE 2008/10/07 APPROVED BY DATE DDOYE 2008/10/07	SCALE 2:1 DESIGN UNITS METRIC THIRD ANGLE PROJECTION	IPASS SAS 2.0 26CKT GUIDE HOUSING ASSEMBLY 0 DEGREE, MULTI PORT <b>molex</b> DOCUMENT NO. SD-111049-010 SHEET NO. 3 OF 4
		MATERIAL NO. SEE P/N TABLE	THIS DRAWING CONTAINS INFORMATION THAT IS PROPRIETARY TO MOLEX. INCORPORATED AND SHOULD NOT BE USED WITHOUT WRITTEN PERMISSION			
		DRAFT WHERE APPLICABLE MUST REMAIN WITHIN DIMENSIONS				

