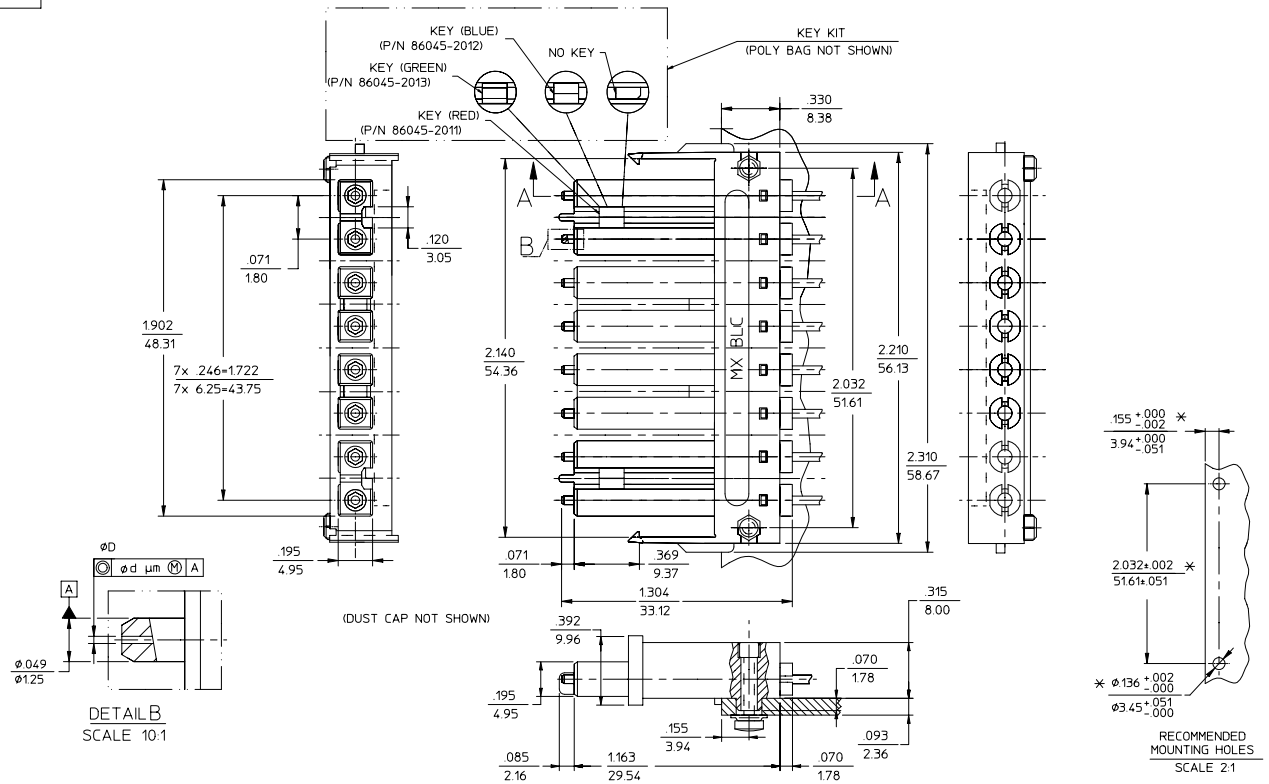


CONNECTOR P/N	øD (µm)	d (µm)	COLOR	CABLE TYPE
86046-2200	125.50 ^{+0.50} / ₀	0.5	RED	SINGLE MODE
86046-3000	127.00 ^{+3.00} / ₀	3.0	BLACK	MULTIMODE
86046-4200	125.00 ^{+0.50} / ₀	0.5	TAN	SINGLE MODE
86046-5000	126.00 ^{+1.00} / ₀	1.0	NATURAL	
86046-6200	125.25 ^{+0.50} / ₀	0.5	YELLOW	
86046-4210	125.2-125.5	0.5	LIGHT BLUE	
86046-4220	125.6-125.9	0.5	DARK BLUE	



- NOTES:
- ALL DIMENSIONS ARE GIVEN IN $\frac{\text{INCHES}}{\text{mm}}$
 - ALL DIMENSIONS ARE FOR REFERENCE ONLY, EXCEPT WHEN MARKED WITH (*)
 - KEYS ARE TO BE PACKAGED UNASSEMBLED WITH CONNECTOR IN POLY BAG

ENTER DESCRIPTION EC NO: MF2002-1420 DRAWN: KPEVZNE#2002/07/22 CHKD: SERNST 2002/07/22 APPR: IGUMIN 2002/07/23	QUALITY SYMBOLS	GENERAL TOLERANCES (UNLESS SPECIFIED)		SCALE 4:1	DESIGN UNITS INCH	THIRD ANGLE PROJECTION	REVISE ON CAD ONLY
	DESCRIPTION REV	\blacktriangledown .0 ∇ .0	mm	INCH	DIMENSION STYLE IN/MM		TITLE
		4 PLACES ± --- ± ---			DRAWN BY	DATE	BLC CONNECTOR (8 POSITION)
		3 PLACES ± --- ± ---			GK	08.11.98	
	2 PLACES ± --- ± ---			CHECKED BY	DATE	MATERIAL NO.	DOCUMENT NO.
	1 PLACE ± --- ± ---			APPROVED BY		DATE	86046-XXX0CD
				ANGULAR ±1/2°			
				DRAFT WHERE APPLICABLE			
				MUST REMAIN WITHIN DIMENSIONS			
				THIS DRAWING CONTAINS INFORMATION THAT IS PROPRIETARY TO MOLEX INCORPORATED AND SHOULD NOT BE USED WITHOUT WRITTEN PERMISSION			