



Main

Range of Product	Modicon M171
Product or Component Type	Communication module
Communication port protocol	Profibus

Complementary

Integrated connection type	Profibus DP DB9 - shielded RS232 cable
Supply	Via base board EVD/EVC
Product Compatibility	Logic controller M171 performance
Net Weight	0.17 lb(US) (0.077 kg)

Environment

Product Certifications	CURus CE CSA EAC
Marking	CE
IP Degree of Protection	IP20
Ambient Air Temperature for Operation	14...131 °F (-10...55 °C)
Ambient Air Temperature for Storage	-4...185 °F (-20...85 °C)
Relative Humidity	10...90 % without condensation

Ordering and shipping details

Category	22537-M171 / M172 HVAC CONTROLLERS
Discount Schedule	PC12
GTIN	3606480752544
Nbr. of units in pkg.	1
Package weight(Lbs)	7.69 oz (218.0 g)
Returnability	No
Country of origin	IT

Packing Units

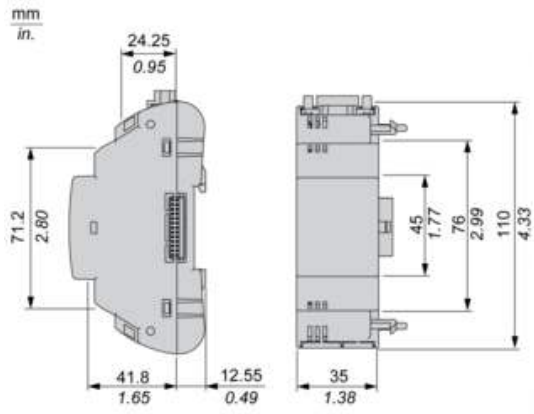
Unit Type of Package 1	PCE
Package 1 Height	5.12 in (13.0 cm)
Package 1 width	3.58 in (9.1 cm)
Package 1 Length	7.28 in (18.5 cm)
Unit Type of Package 2	S02
Number of Units in Package 2	6
Package 2 Weight	3.78 lb(US) (1.716 kg)
Package 2 Height	5.91 in (15.0 cm)

Package 2 width	11.81 in (30.0 cm)
Package 2 Length	15.75 in (40.0 cm)

Offer Sustainability

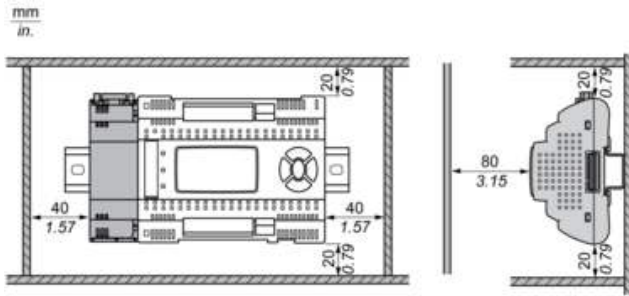
California proposition 65	WARNING: This product can expose you to chemicals including: Lead and lead compounds, which is known to the State of California to cause cancer and birth defects or other reproductive harm. For more information go to www.P65Warnings.ca.gov
REACH Regulation	REACH Declaration
REACH free of SVHC	Yes
EU RoHS Directive	Pro-active compliance (Product out of EU RoHS legal scope) EU RoHS Declaration
Mercury free	Yes
RoHS exemption information	Yes
China RoHS Regulation	China RoHS Declaration
WEEE	The product must be disposed on European Union markets following specific waste collection and never end up in rubbish bins.

Dimensions

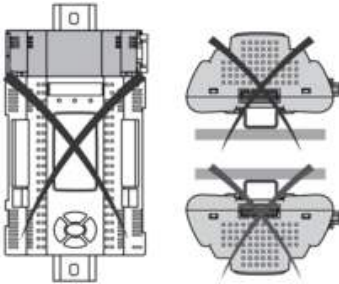


Mounting and Clearance

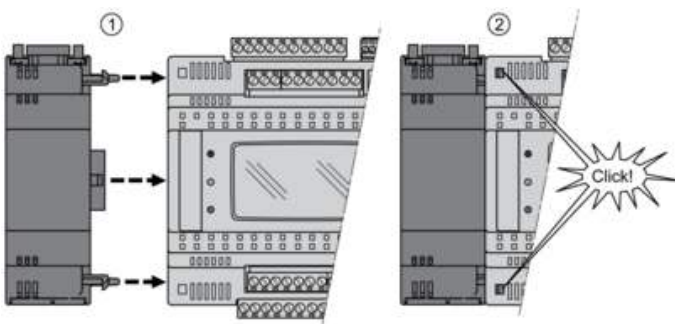
Clearance



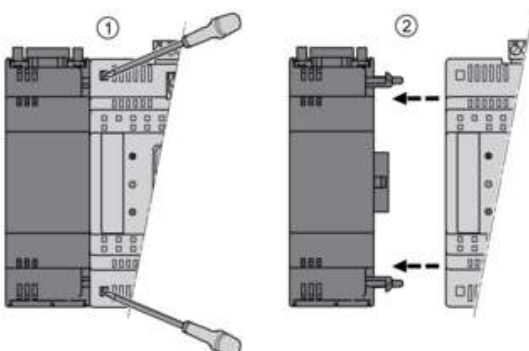
Misplacement



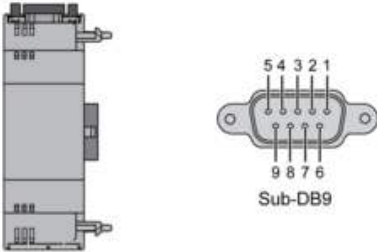
Mounting on Controller



Dismounting



Profibus port (Profibus DP)



N°	Profibus
1	Shield
2	Output ground 24 V
3	RXD-TXD +
4	Repeater Control Signal TRS
5	Ground 0 V
6	5 V
7	24 V
8	RXD-TXD-
9	Control Signal direction

*Shield: To be connected externally to the protective earth