

PRODUCT NUMBER

89898-YXXZHFLF

RoHS COMPATIBLE, SEE NOTE 6

OPTION LETTERS, NOTE 1b, OMIT FROM PRODUCT NUMBER IF NOT APPLICABLE

A=PRODUCT WITH GREY PICK UP CAP IN TAPE & REEL, SEE TA-856.

AV=PRODUCT WITH GREY PICK UP CAP IN TAPE & REEL

FOR CUSTOMER DEDICATED PART, SEE TA-856.

B=PRODUCT WITH PICK UP CAP PACKED IN TUBE.

G=PRODUCT WITH BLACK PICK UP CAP IN TAPE & REEL, SEE TA-856.

K=PRODUCT WITHOUT PICK UP CAP IN TAPE & REEL, SEE TA-856

NUMBER OF POSITIONS PER ROW: 02 TO 30.
OVER THAN 30 POSITIONS ON SPECIAL REQUEST.

PLATING CODE

3= 0.76µm GOLD ON CONTACT AREA.
2µm MIN MATTE TIN ON TAIL.

4= 2µm MIN MATTE TIN FULL PLATED
1.27µm Ni MIN UNDERPLATING

NOTES:

- 1a- HOUSING & PICK UP CAP MAT'L: THERMOPLASTIC GLASS FILLED FLAME RETARDANT PER UL 94 V-0 COLOR: GREY.
- b- HIGH TEMPERATURE PLASTIC 30% GLASS REINFORCED NON HALOGEN FLAME RETARDED MOLDING COMPOUND COLOR BLACK.

- 2 - TERMINAL MATERIAL: PHOSPHOR BRONZE.
- 3 - PACKAGING:
2 UP TO 4 POSITIONS PRODUCT PACKED IN PLASTIC BOX.
5 UP TO 30 POSITIONS PRODUCT PACKED IN TUBE.
WHOLE 89898-304B PACKED IN TUBE.

- 4 - TO DETERMINE DIMENSIONS:
N = NUMBER OF POSITIONS PER ROW
EXAMPLE: 8 POS: (N×2.54)-0.08=20.24 mm.
- 5 - RECOMMENDED IR PROFILE PER TA842.

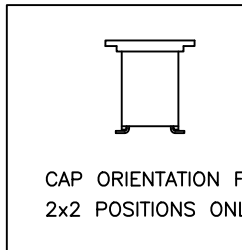
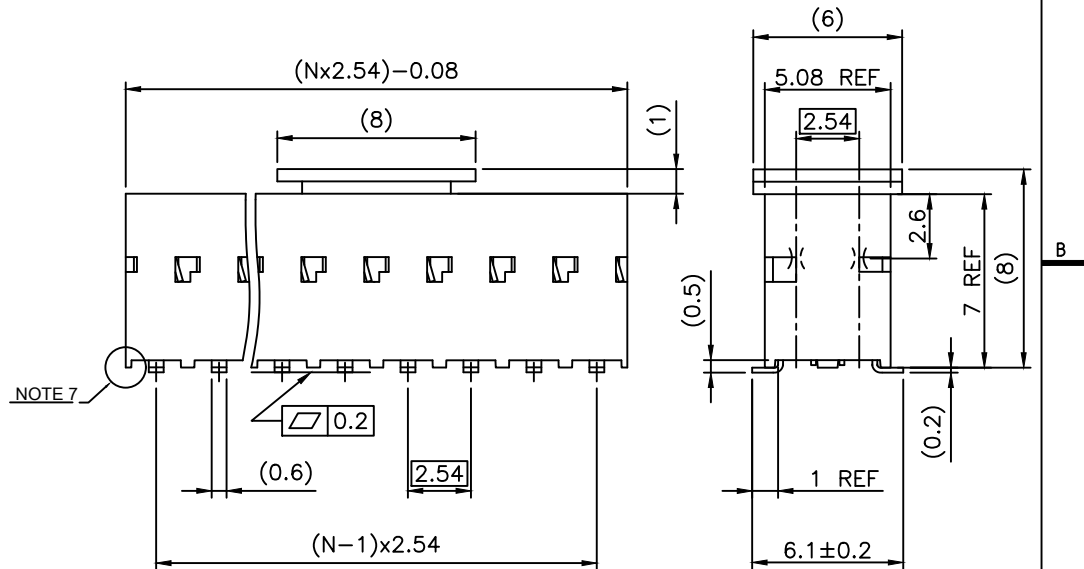
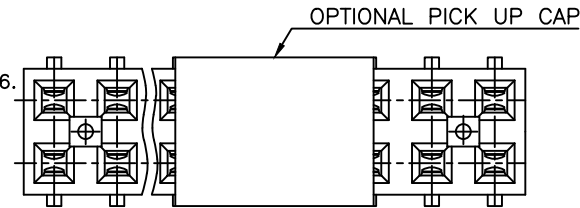
6 - RoHS COMPATIBLE PRODUCT SPECIFICATIONS

- a - PLATING:
- "LF" MEANS THE PRODUCT IS LEAD-FREE,
2µm MINIMUM MATTE TIN OVER 1.27µm MINIMUM NICKEL UNDERPLATE.
- b - MANUFACTURING PROCESS COMPATIBILITY
- THE HOUSING WILL WITHSTAND EXPOSURE TO 260°C PEAK TEMPERATURE FOR 30 SECONDS MAX IN A CONVECTION INFRA-RED OR VAPOR PHASE OR REFLOW OVEN.

- c - LABELING:
- MEETS PACKAGING SPECS AS PER GS-14-920

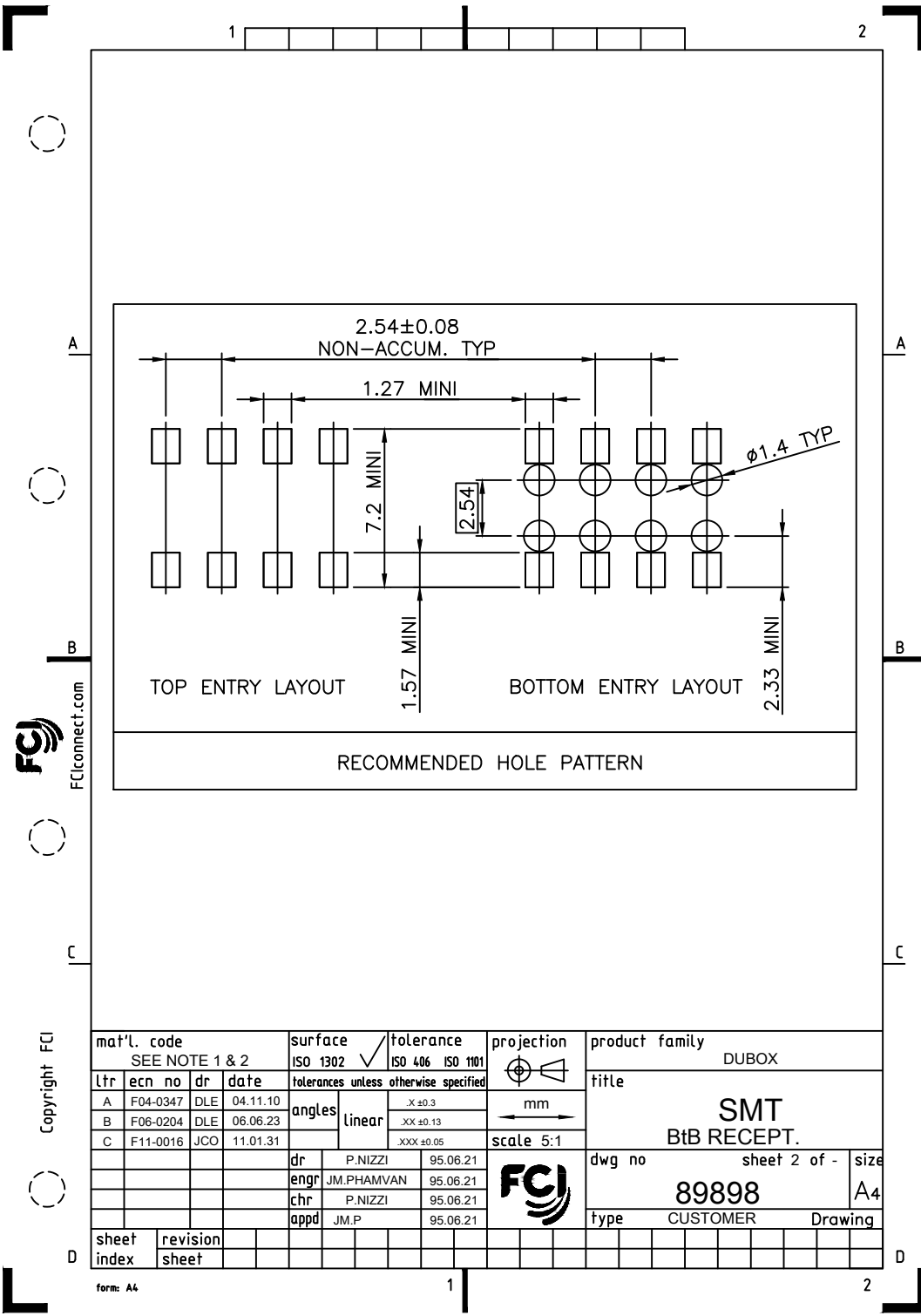
- d - LEGAL STATEMENT: SEE GS-47-0004

- 7 - END STAND-OFFS FOR 2x2 UP TO 2x4 POS
NO END STAND-OFFS FOR 2x5 UP TO 2x50 POS



mat'l. code		surface		tolerance		projection		product family	
SEE NOTE 1 & 2		ISO 1302 ✓		ISO 406 ISO 1101		mm		DUBOX	
lfr		ecn no		dr		date		title	
AE F12-0047		JCO		12.07.16		tolerances unless otherwise specified		SMT BtB RECEPT.	
AF B-18748		LMU		14.09.04		angles			
AG B-19123		LMU		14.10.21		Linear			
AH F-24429		AMA		16.07.01		.X ±0.3			
AJ F-25050		DDE		16.09.28		.XX ±0.13			
AK F-30587		DDE		18.06.29		.XXX ±0.05		scale 5:1	
dr		P.NIZZI		95.06.21		FCJ		dwg no	
engr		J.M.PHAMVAN		95.06.21		sheet 1 of 2		size	
chr		P.NIZZI		95.06.21		89898		A3	
appd		J.M.P		95.06.21		type		CUSTOMER Drawing	
sheet index		revision sheet		AK C		1 2			

FCI
FCconnect.com
Copyright FCI



FCconnect.com

Copyright FCJ

mat'l. code SEE NOTE 1 & 2				surface ISO 1302 ✓		tolerance ISO 406 ISO 1101		projection mm		product family DUBOX	
ltr	ecn no	dr	date	tolerances unless otherwise specified				title			
A	F04-0347	DLE	04.11.10	angles	linear	.X ±0.3	mm	SMT BtB RECEPT.		sheet 2 of - size A4	
B	F06-0204	DLE	06.06.23			.XX ±0.13	←				
C	F11-0016	JCO	11.01.31			.XXX ±0.05	→				
				dr	P.NIZZI	95.06.21	scale 5:1		dwg no		
				engr	JM.PHAMVAN	95.06.21	FCJ		89898		
				chr	P.NIZZI	95.06.21	type		CUSTOMER		Drawing
				appd	JM.P	95.06.21					
sheet index		revision sheet									

form: A4