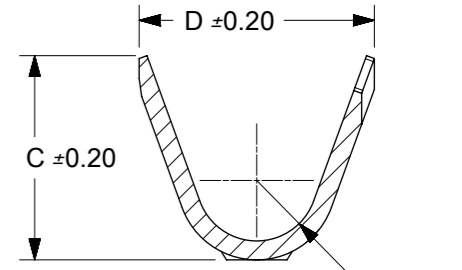
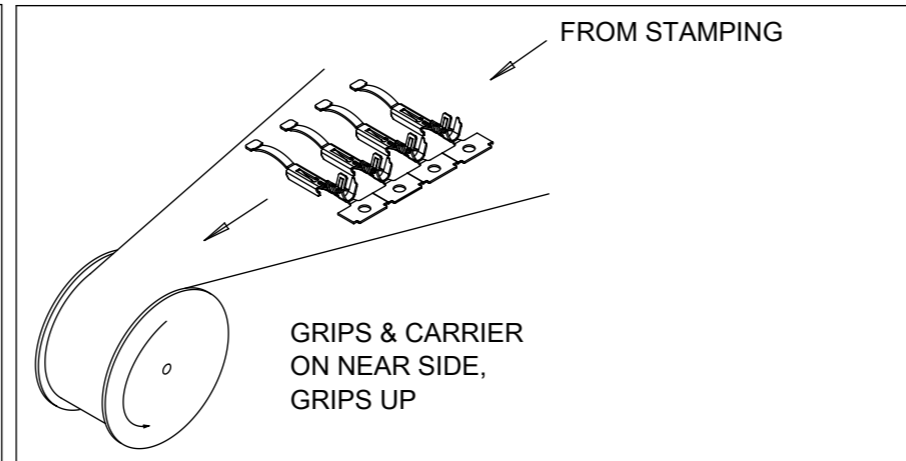
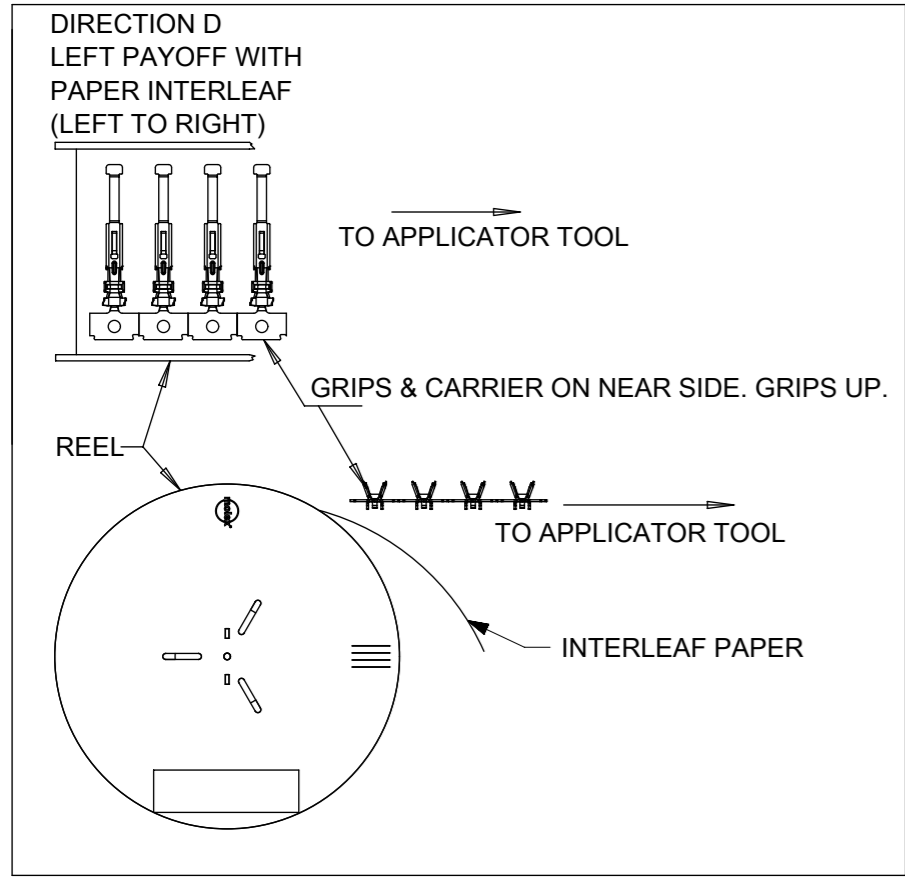


SECTION Y-Y



SECTION Z-Z

REELING DIRECTIONS



PART NUMBER	PLATING FINISH	AWG	A	B	Rx	C	D	Ry
1502000011	SELECTIVE GOLD AND SELECTIVE TIN OVER NICKEL	20-22	2.50	2.70	0.60	2.70	3.10	0.80
1502000012	SELECTIVE GOLD AND SELECTIVE TIN OVER NICKEL	24-26	2.35	2.70	0.25	2.20	2.40	0.70

- NOTES:
1. MATERIAL: COPPER NICKEL
  2. PRODUCT SPECIFICATION: 1502000000-PS
  3. PACKAGING SPECIFICATION: PK-150197-0000
  4. MATES WITH IDENTICAL TERMINAL (PART NUMBER 1502000011/12)
  5. USED WITH GENDERLESS CRP HSG PART NUMBER 150201001\*
  6. COSMETIC SPECIFICATION: PS-45499-002 CLASS B

THIS DRAWING CONTAINS INFORMATION THAT IS PROPRIETARY TO MOLEX ELECTRONIC TECHNOLOGIES, LLC AND SHOULD NOT BE USED WITHOUT WRITTEN PERMISSION		CURRENT REV DESC: NEW CREATION		<b>molex</b>	
DIMENSION UNITS	SCALE	EC NO: 609483			
mm	10:1	DRWN: SMAHAJANSHET 2018/10/05		GENDERLESS TERMINAL POS LOCK HIGH TEMP	
GENERAL TOLERANCES (UNLESS SPECIFIED)		CHK'D: NCSR 2018/12/21		DITTO INTERCONNECTS	
ANGULAR TOL	± 0.5°	APPR: NCSR 2018/12/21		PRODUCT CUSTOMER DRAWING	
4 PLACES	±	INITIAL REVISION:		DOCUMENT NUMBER	
3 PLACES	±	DRWN: SMAHAJANSHET 2018/10/05		1502000000-SD	
2 PLACES	± 0.13	APPR: NCSR 2018/12/21		DOC TYPE	
1 PLACE	± 0.25	THIRD ANGLE PROJECTION		PSD	
0 PLACES	±	DRAWING		DOC PART	
DRAFT WHERE APPLICABLE MUST REMAIN WITHIN DIMENSIONS		A3-SIZE		000	
		SERIES		REVISION	
		150200		A	
		MATERIAL NUMBER		SHEET NUMBER	
		SEE TABLE		1 OF 1	
		CUSTOMER			
		GENERAL MARKET			