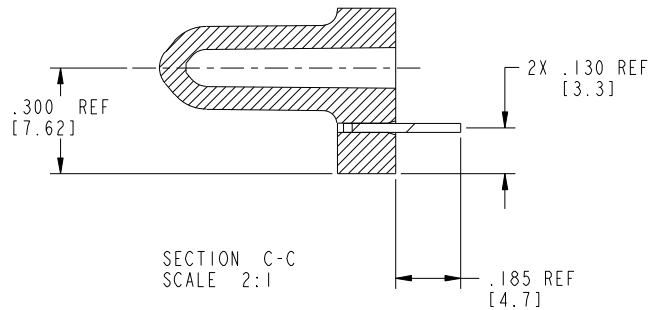
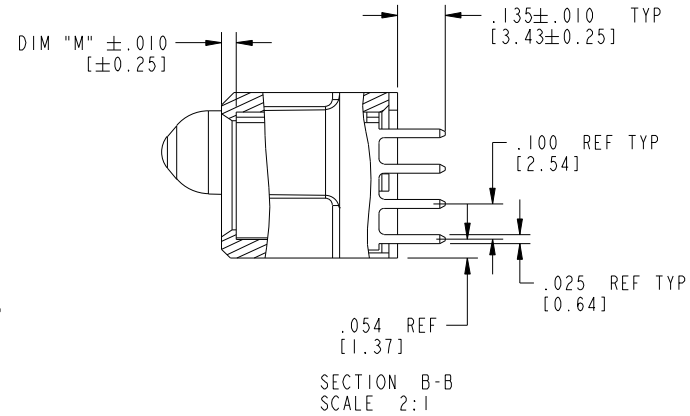
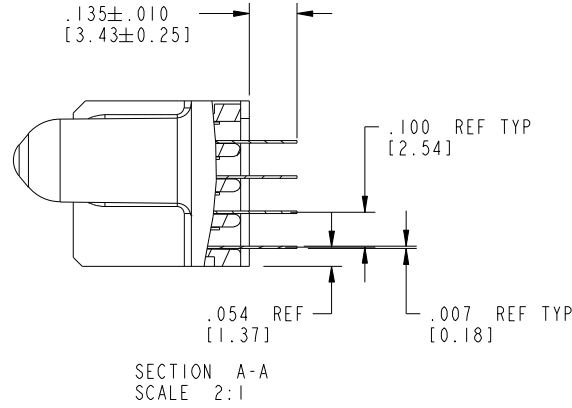


Tous droits strictement reserves. Reproduction ou communication a des tiers interdite sous quelque forme que ce soit sans autorisation écrite du propriétaire. Propriete de c FCI. Droits de reproduction FCI.

All rights strictly reserved. Reproduction or issue to third parties in any form whatever is not permitted without written authority from the proprietor. Property of FCI. Copyright FCI.

PRODUCT NUMBER
51940-131__
NOTE (3)



mat'l code		SEE NOTE 2		tolerances unless otherwise specified		CUSTOMER		FCI		www.fciconnect.com	
ltr	ecn no.	dr	date	linear	.XX±.01/0.X±0.3	COPY		title			
A					.XXX±.005/0.XX±0.13	projection		40S+2P			
				angles	.XXX±.0020/0.XXX±0.051			VERTICAL SOLDER RECEPT			
				dr	0°±2°	INCH/MM		product family		PwrBlade	code
				enrg	LH 03/16/05	scale		size		dwg no	213
				chr	LH 03/16/05	1:1		A		51940-131	sheet
				appd	VICTOR LIN 03/16/05						2 of 4
					JOSEPH HSIA 03/16/05						
sheet index	revision sheet										

cage code 22526

Pro/E

All rights strictly reserved. Reproduction or issue to third parties in any form whatever is not permitted without written authority from the proprietor. Property of FCI. Copyright FCI.

A
FCI

Tous droits strictement reserves. Reproduction ou communication a des tiers interalle sous quelque forme que ce soit sans autorisation ecrite du proprietaire. Propriete de c FCI. Droits de reproduction FCI.

PRODUCT NUMBER
51940-131__
NOTE (3)

NOTES:

1. DIMENSIONS AND TOLERANCES ARE IN ACCORDANCE WITH ASME Y14.5M, 1994 UNLESS OTHERWISE SPECIFIED.

CONNECTOR NOTES:

(2) HOUSING MATERIAL: UL 94 V-0 GLASS FILLED
HIGH-TEMP THERMOPLASTIC
POWER CONTACT MATERIAL: COPPER ALLOY
SIGNAL PIN MATERIAL: COPPER ALLOY

3. PLATING:
51940-131:50u"/1.27um Ni UNDER ALL
SIGNAL PINS: 30u"/0.76um Au ON CONTACT AREA;100u"/2.54um SnPb ON TERMINATION AREA
POWER CONTACTS: 30u"/0.76um Au ON CONTACT AREA;100u"/2.54um SnPb ON TERMINATION AREA

51940-131LF:50u"/1.27um Ni UNDER ALL
SIGNAL PINS: 30u"/0.76um Au ON CONTACT AREA;78u"/2.00um Sn ON TERMINATION AREA
POWER CONTACTS: 30u"/0.76um Au ON CONTACT AREA;78u"/2.00um Sn ON TERMINATION AREA

PART NUMBER 51940-131LF MEETS EUROPEAN UNION DIRECTIVE AND OTHER COUNTRY REGULATIONS AS DESCRIBED IN GS-22-008.

(4) MANUFACTURER'S NAME, P/N, AND DATE CODE TO APPEAR ON THIS SURFACE.

5. PRODUCT SPECIFICATION GS-12-149.
APPLICATION SPECIFICATION BUS-20-067.

6. PACKAGED IN TRAYS.

PCB NOTES:


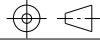
7. ALL HOLE DIAMETERS ARE FINISHED HOLE SIZE.

(8) MOUNTING HOLES, WHERE APPLICABLE, ARE UNPLATED.

(9) $\varnothing .0453 \pm .0010$ [1.151 ± 0.025] DRILLED HOLES PLATED WITH
.0003 [0.008] MIN SnPb OVER .001 [0.03]
TO .003 [0.08] Cu PLATING TO ACHIEVE
 $\varnothing .040 \pm .003$ [$1.02 \pm .07$] HOLE.

(10) "DIM XXX" TO BE DETERMINED BY THE CUSTOMER.

(11) CONNECTOR KEEP-OUT ZONE.

mat'l code				SEE NOTE 2		tolerances unless otherwise specified		CUSTOMER		 www.fciconnect.com	
ltr	ecr no.	dr	date	linear		.XX±.01/0.X±0.3	COPY		projection		
A						.XXX±.005/0.XX±0.13				40S+2P	
				angles		.XXX±.0020/0.XXX±0.051	INCH/MM			VERTICAL SOLDER RECEPT	
				dr	LH	0°±2°	product family		PwrBlade	code	
				enrg	LH	03/16/05	size		dwg no	213	
				chr	VICTOR LIN	03/16/05	scale		A	51940-131	
				appd	JOSEPH HSIA	03/16/05	1:1			4 of 4	
sheet index		revision sheet									

cage code 22526

Pro/E