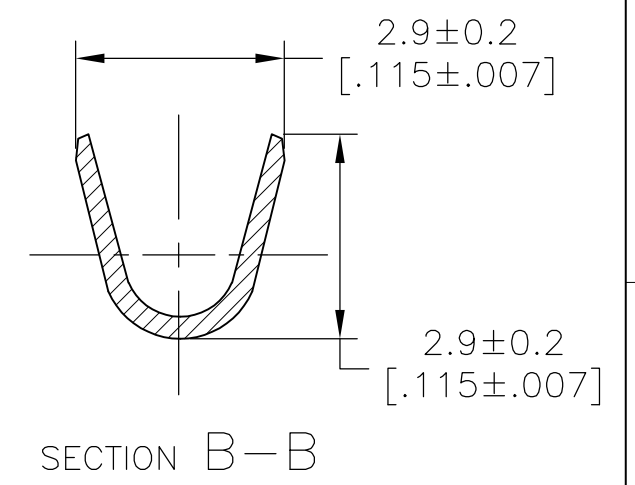
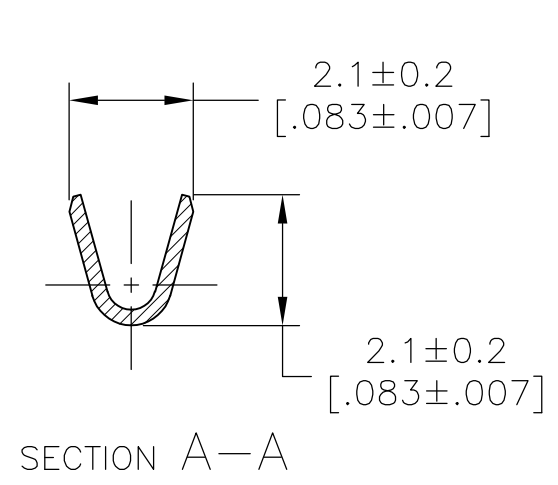
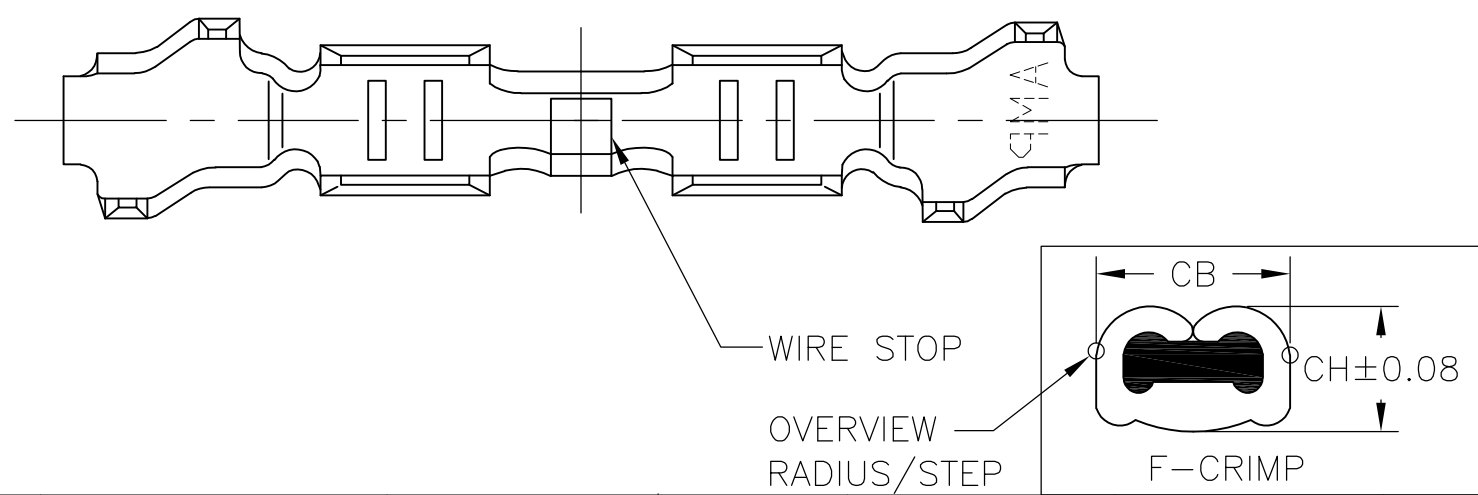
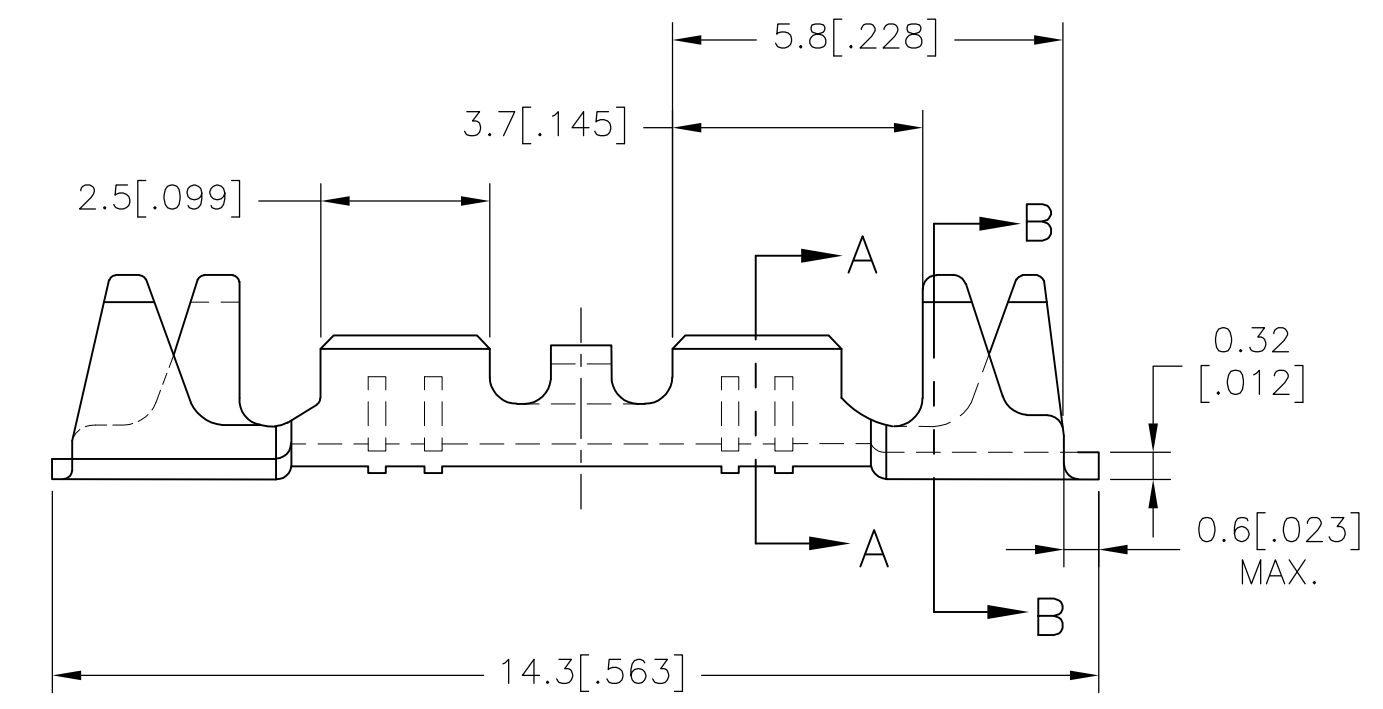


THIS DRAWING IS UNPUBLISHED. RELEASED FOR PUBLICATION
 © COPYRIGHT - By - ALL RIGHTS RESERVED.

REVISIONS					
P	LTR	DESCRIPTION	DATE	DWN	APVD
	A1	REVISED PER ECR-17-000551	17JAN2017	RS	TD



963920-1	-	PRE TINNED 1-3µm	CuSn4 F48	0.5 FLR 0.35 FLR	1.2-1.6	4.0±0.3	0.5 mm ² =1.06 0.35mm ² =1.06	1.57	2.29	HAND TONG, COMPLETE 734577-1
AMP ORDER NO. SINGLE EXCHANGE	AMP ORDER NO. ACCESSORIES	SURFACE	MATERIAL	DGB in mm ²	INS. Ø mm	STRIPPING RANGE in mm	WIRE CRIMP CH in mm AT THE SINGLE STOP	WIRE	INS.	HAND TONG 734200-1
							CRIMP WIDTH	MATERIAL:		734517-1
							CB in mm			

THIS DRAWING IS A CONTROLLED DOCUMENT.				DWN RAVI S 17NOV2016	STE TE Connectivity														
DIMENSIONS: mm [INCHES]				CHK LI DAISY 17NOV2016															
TOLERANCES UNLESS OTHERWISE SPECIFIED:				APVD DING TIM 17NOV2016	NAME BUTT SPLICE, LOOSE PIECE														
<table border="0"> <tr><td>0 PLC</td><td>± -</td></tr> <tr><td>1 PLC</td><td>± -</td></tr> <tr><td>2 PLC</td><td>± 0.4 [.015]</td></tr> <tr><td>3 PLC</td><td>± 0.4 [.015]</td></tr> <tr><td>4 PLC</td><td>± -</td></tr> <tr><td>ANGLES</td><td>± -</td></tr> </table>				0 PLC	± -	1 PLC	± -	2 PLC	± 0.4 [.015]	3 PLC	± 0.4 [.015]	4 PLC	± -	ANGLES	± -	PRODUCT SPEC -	SIZE		
0 PLC	± -																		
1 PLC	± -																		
2 PLC	± 0.4 [.015]																		
3 PLC	± 0.4 [.015]																		
4 PLC	± -																		
ANGLES	± -																		
MATERIAL SEE TABLE				APPLICATION SPEC -	CAGE CODE														
FINISH SEE TABLE				WEIGHT -	DRAWING NO														
				CUSTOMER DRAWING	RESTRICTED TO -														
				SCALE 1:1	SHEET 1 OF 1		REV A1												