

Industrial  
Equipment  
Manufacturing

# Secured Edge Analyzer

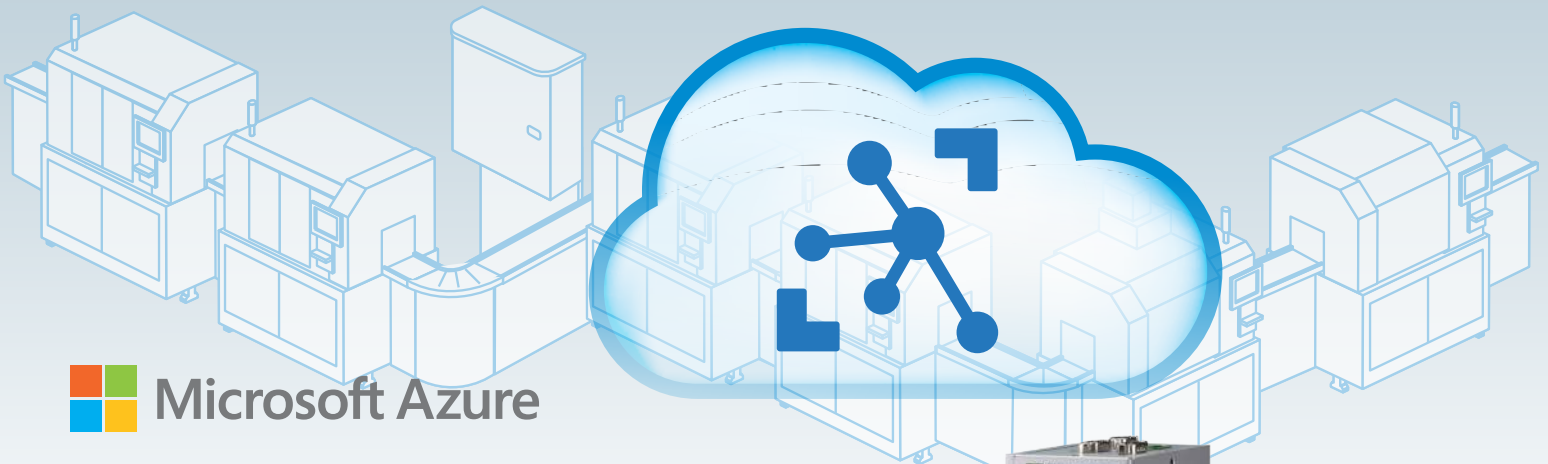
Intelligent Platform with Azure IoT Edge &  
WISE-PaaS/EdgeLink

Edge  
Solution Ready  
Package

ESRP-CSS-UN02484



- Extends cloud intelligence and analytics to edge devices
- Boosts productivity and response times with data insights
- Offers secure cloud communication and edge intelligence
- WISE-PaaS/EdgeLink supports more than 200 PLC device



 Microsoft Azure

WISE-PaaS/EdgeLink



TRM



Supports Numerous IoT Modules

Data Filter

Stream Analysis

Database Localization

Machine Learning

**ADVANTECH**

Enabling an Intelligent Planet

POWERED BY  
**ADVANTECH**  
**WISE-PaaS**

# Edge Solution-Ready Package

## ESRP-CSS-UNO2484



### Extends cloud intelligence and analytics to edge devices

IoT solutions, such as stream analytics, machine learning, image recognition, and other high-value AI modules, deployed from the cloud to the edge to support diverse applications.



### Boosts productivity and response times with data insights

Local data processing enables immediate decision-making and reduces bandwidth costs by minimizing the data transmitted from local devices to the cloud.



### Offers secure cloud communication and edge intelligence

The inclusion of Azure IoT Edge Security Daemon and onboard TPM 2.0 increases device security while a SSL ensures connectivity between the cloud and intelligent edge.



### WISE-PaaS/EdgeLink supports more than 200 PLC device

Edgelink supports more than 200 PLC device for collecting data from devices, and features plug-and-play functionality which reduce software development time. Eliminate the gap between OT and IT.

Intelligent Platform with Azure IoT Edge & WISE-PaaS/EdgeLink			
<b>Part Number</b>	ESRP-CSS-UNO2484	ESRP-CSS-UNO1372	ESRP-CSS-UNO2271
<b>Operating System</b>	AdvLinuxTU	AdvLinuxTU	AdvLinuxTU
<b>Software</b>	Microsoft Azure IoT Edge Engine, Advantech WISE-PaaS/EdgeLink Linux 8000 tags	Microsoft Azure IoT Edge Engine, Advantech WISE-PaaS/EdgeLink Linux 5000 tags	Microsoft Azure IoT Edge Engine, Advantech WISE-PaaS/EdgeLink Linux 3000 tags
<b>Form Factor</b>	Regular with stackable design and front-facing I/O	Din-rail	Pocket Size
<b>CPU</b>	Intel® Core™ i5-7300U	Intel® Celeron® J1900	Intel® Atom® E3825
<b>Memory</b>	8 GB DDR4	4GB DDR3L	4GB DDR3L
<b>Display Type</b>	1 x HDMI supports 1920 x 1080 @ 60 Hz, 1 x DP supports 3840 x 2160 @ 30 Hz	1 x DP, supports 2560 x 1440 @ 60Hz 1 x HDMI, supports 1920 x 1080 @ 60Hz	1 x HDMI, supports 1920 x 1080 @ 60Hz
<b>Storage</b>	32 GB SSD	32 GB SSD	32 GB eMMC
<b>LED Indicators</b>	Power, HDD, LAN (Active, Status), RTC Battery	Power, RTC battery, LAN (Active, Status), COM (Tx/Rx), HDD, Programmable LED	Power, HDD, LAN (Active, Status)
<b>Expansion Slots</b>	1 x Full-size mPCIe	2 x Full size mPCIe slots	1 x Full-size mPCIe slot
<b>Mount Options</b>	Stand, wall with optional VESA and DIN rail	DIN-rail	Stand, Wall, VESA (Optional), DIN-rail (Optional), Pole (Optional)
<b>Network (LAN)</b>	4 x RJ45, 10/100/1000 Mbps IEEE 802.3u 1000 BASE-T fast Ethernet	2 x RJ45, 10/100/1000 Mbps IEEE 802.3u 1000Base-T Fast Ethernet	2 x RJ45, 10/100/1000 Mbps IEEE 802.3u 1000Base-T Fast Ethernet
<b>I/O</b>	4 x RS-232/422/485, DB9, 4 x USB 3.0	Isolated 4 x RS232/422/485, DB9, 50 ~ 115.2kbps (Isolation Protection 1500 V <sub>DC</sub> ) Isolated 4-ch digital input (Default contact), 4-ch digital output (2500 V <sub>DC</sub> ) 3 x USB 2.0, 1 x USB 3.0	2 x RS 232/422/485 1 x USB 3.0
<b>Power Input</b>	10 ~ 36 V <sub>DC</sub>	10 ~ 36 V <sub>DC</sub>	10 ~ 30 V <sub>DC</sub>
<b>Operating Temperature</b>	-20 ~ 60 °C (-4 ~ 140 °F)	-20 ~ 60 °C (-4 ~ 140 °F)	0 ~ 50 °C (32 ~ 122 °F)
<b>Storage Temperature</b>	-40 ~ 85 °C (-40 ~ 185 °F)	-40 ~ 85 °C (-40 ~ 185 °F)	-20 ~ 70 °C (-4 ~ 158 °F)
<b>Dimensions (W x D x H)</b>	200 x 140 x 40 mm (7.8 x 5.6 x 1.6 in)	65 x 105 x 150mm (2.6" x 4.1" x 5.9" in)	100 x 70 x 60 mm (3.9" x 2.8" x 2.4" in)
<b>Certification</b>	CE, FCC, CCC, BSMI, UL	CE, FCC, UL, CCC, BSMI	CE, FCC, UL, CCC, BSMI

### Ordering Information

ESRP-CSS-UNO2484	Intelligent platform with Azure IoT Edge, UNO-2484G-7531AE, 8 GB RAM, 32 GB SSD, WISE-PaaS/Edgelink Linux 8000 tags, AdvLinuxTU
ESRP-CSS-UNO1372	Intelligent platform with Azure IoT Edge, UNO-1372G-J021AE, 4 GB RAM, 32 GB SSD, WISE-PaaS/Edgelink Linux 5000 tags, AdvLinuxTU
ESRP-CSS-UNO2271	Intelligent platform with Azure IoT Edge, UNO-2271G-E023AE, 4 GB RAM, 32 GB eMMC, WISE-PaaS/Edgelink Linux 3000 tags, AdvLinuxTU