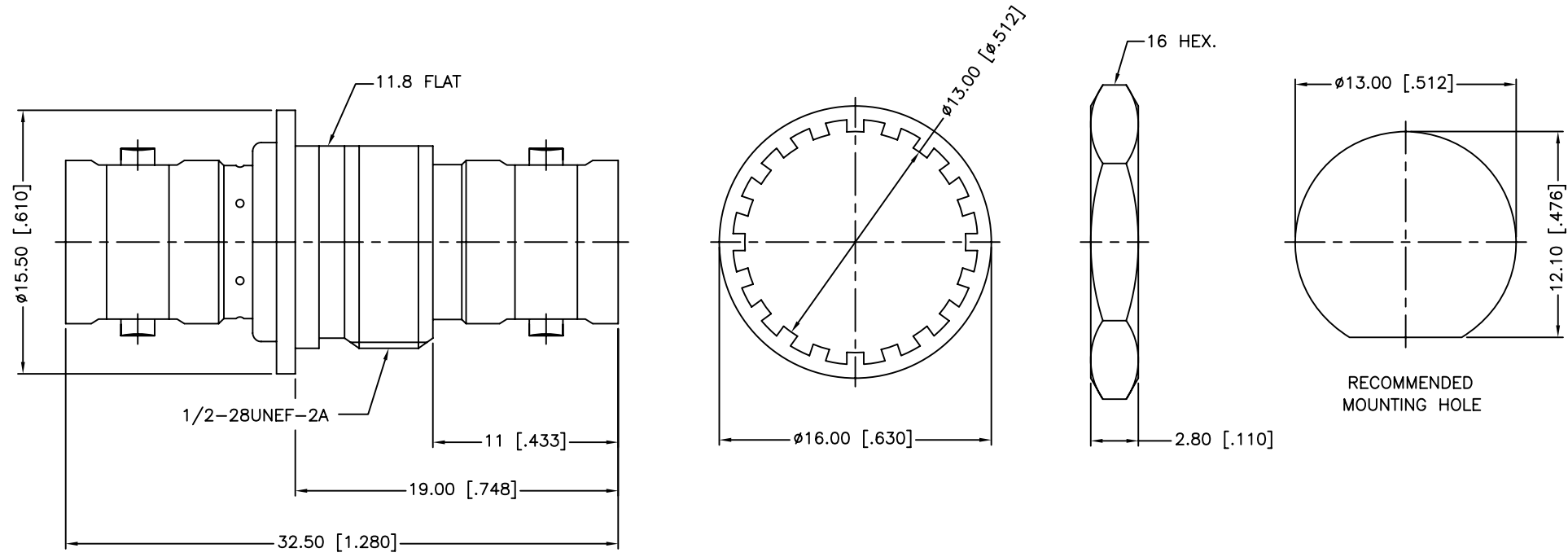


REV.	DATE	ECR NO.	DESCRIPTION
NC	06/15/98	XXXXXX	INITIAL RELEASE
A	05/13/08	100015	UPDATE DRAWING FORMAT
B	06/21/11	2185	ADD NOTE 1, 2, 3



1. IMPEDANCE: 50 OHMS
2. FREQUENCY RANGE: 0-4 GHz
3. MAX. PANEL THICKNESS: 4.5MM

DESCRIPTION	MATERIAL	FINISH	QTY	
6	HEX NUT	BRASS	NICKEL	1
5	LOCK WASHER	BRASS	NICKEL	1
4	INSULATOR	DELRIN	NATURAL	1
3	CONTACT PIN	PHOSPHOR BRONZE	GOLD	1
2	INSULATOR	DELRIN	NATURAL	1
1	BODY	BRASS	NICKEL	1

UNLESS OTHERWISE SPECIFIED DIMENSIONS ARE IN MILLIMETERS. DIMENSIONS IN [] ARE IN INCHES AND FOR CUSTOMER REFERENCE ONLY.		APPROVALS	DATE
UNLESS OTHERWISE SPECIFIED TOLERANCES FOR MILLIMETERS ARE: 0.5 - 8mm ± 0.20mm 8 - 30mm ± 0.40mm 30 - 120mm ± 0.50mm		DRAWN M.ZHANG	06/21/11
UNLESS OTHERWISE SPECIFIED TOLERANCES FOR INCHES ARE: .020 - .315 = ± 0.007" .315 - 1.180 = ± 0.015" 1.180 - 4.724 = ± 0.020"		CHECKED	
DO NOT SCALE DRAWING		ISSUED	
		SHEET 1 OF 1	
		CAD FILE C:/CONNEX/112439.DWG	

Amphenol Connex			
PART DESCRIPTION BNC FEMALE TO FEMALE BULKHEAD ISOLATED ADAPTOR			
PART NO. 112439			
DWG. NO.	112439.DWG	REV.	B
SIZE	A	SCALE	NA