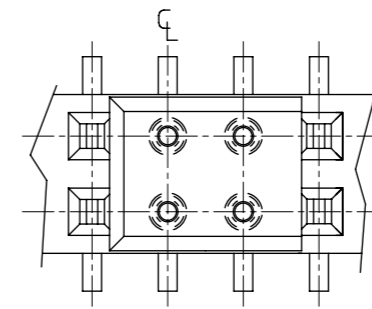
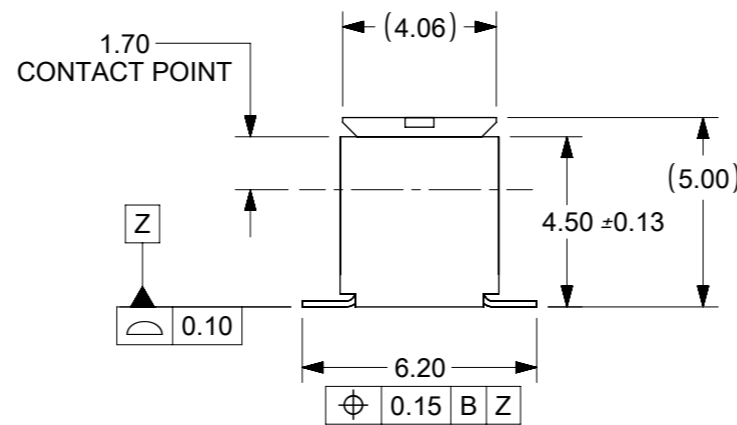
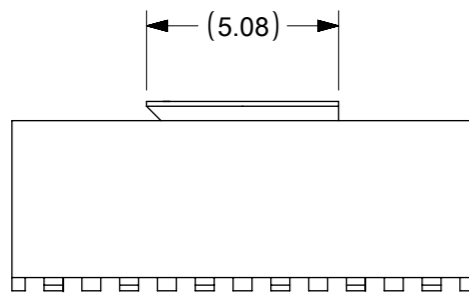


EVEN CIRCUIT SIZE CAP ORIENTATION  $\triangle 6$



ODD CIRCUIT SIZE CAP ORIENTATION  $\triangle 6$



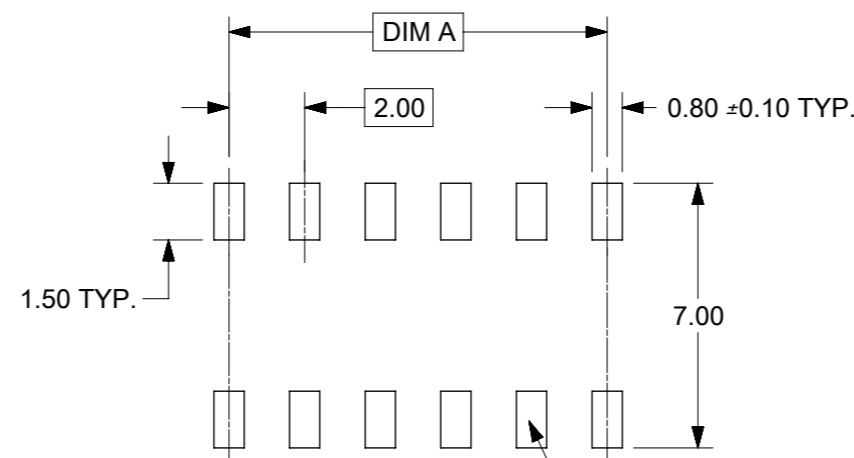
PART NUMBER LEGEND

87381 - \*\* 78

CKT SIZE

NOTES:

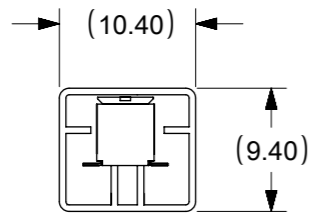
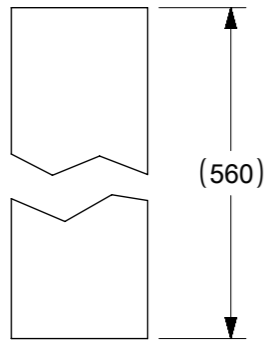
1. PLATING FINISH:  
0.38 $\mu$ m MIN. GOLD IN CONTACT AREA, 1.27 $\mu$ m MIN. TIN IN SOLDER TAIL AREA BOTH OVER NICKEL OVERALL
2. 30 CKT ILLUSTRATED FOR TAPE & REEL VERSION ON SHEET 2.
3. PRODUCT SPECIFICATION PS-87380 APPLIES
4. COPLANARITY OF SOLDER TAILS ARE TO BE MEASURED BY RESTING THE PART ON A FLAT GAUGE SURFACE.
5. TUBE PACKAGING STANDARD.
6. COVER IS PLACE INTO THE CORE HOLE AT THE CENTRE OF PART  
EVEN CKT -CENTRE 2 CKT (CENTRE LINE BETWEEN)  
ODD CKT -CENTRE 1 CKT (CENTRE LINE) SND 1CKT TO RIGHT.
7. PARTS SHALL BE PACKED IN MOISTURE BARRIER BAG.



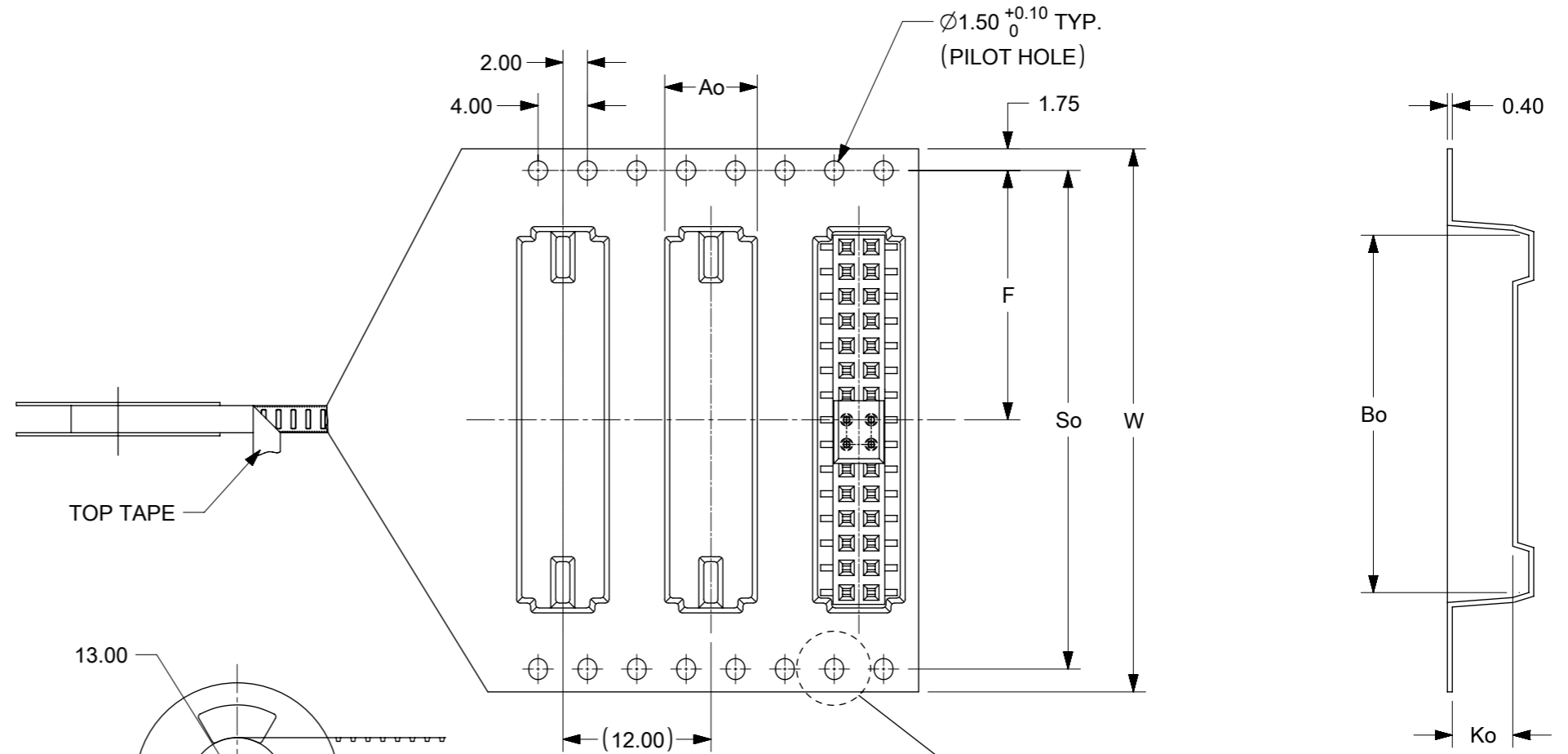
RECOMENDED PCB LAYOUT

THIS DRAWING CONTAINS INFORMATION THAT IS PROPRIETARY TO MOLEX ELECTRONIC TECHNOLOGIES, LLC AND SHOULD NOT BE USED WITHOUT WRITTEN PERMISSION											
DIMENSION UNITS		SCALE		CURRENT REV DESC: MIGRATED TO NX							
mm		NTS									
GENERAL TOLERANCES (UNLESS SPECIFIED)											
		MM	INCH	EC NO: 175765 DRWN: GGUNAGI 2018/02/08 CHK'D: GGUNAGI 2018/06/07 APPR: GGA 2018/06/08							
4 PLACES		±	±	INITIAL REVISION: DRWN: KSEE 2001/04/25 APPR: KHLIM 2015/01/22							
3 PLACES		±	±								
2 PLACES		± 0.2	±	PRODUCT CUSTOMER DRAWING DOCUMENT NUMBER: SD-87381-XX68 DOC TYPE: PSD DOC PART: 001 REVISION: E1							
1 PLACE		±	±								
0 PLACES		±	±	MATERIAL NUMBER: SEE TABLE CUSTOMER: GENERAL MARKET SHEET NUMBER: 1 OF 2							
ANGULAR TOL		± 3.0°									
DRAFT WHERE APPLICABLE MUST REMAIN WITHIN DIMENSIONS				THIRD ANGLE PROJECTION		DRAWING		SERIES		MATERIAL NUMBER	
						A3-SIZE		87381		SEE TABLE	

CKT SIZE	PART NO IN TUBE	PART NO WITH CAP IN TAPE & REEL	W	So	Ao	F	Bo	Ko
50	87381-5078	87381-6851	72	68.40	7.20	34.20	50.50	5.30

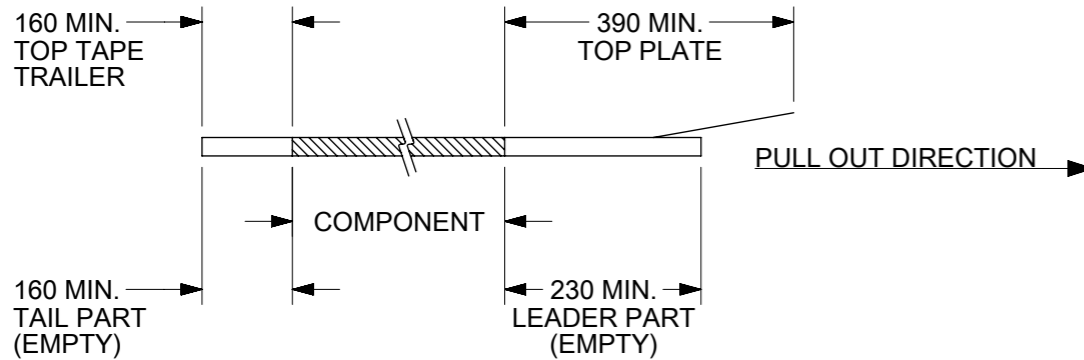


CONNECTOR ORIENTATION IN TUBE

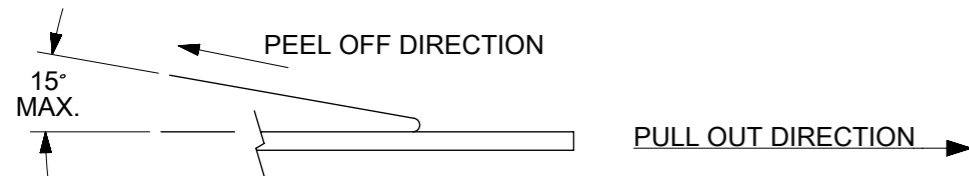


TAPE & REEL NOTES:

1. LEADER AND TRAILER TAPE



2. PEELING OFF FORCE OF THE TOP TAPE: 20-80gf. (PEELING DIRECTION AS SHOWN IN FOLLOWING FIGURE)



3. PACKAGING STANDARD IS AS PER EIA-481.  
4. TAPE & REEL QUANTITY = 800PCS/REEL.

30 CKT FOR ILLUSTRATION ONLY  
TAPE & REEL ORIENTATION

THIS DRAWING CONTAINS INFORMATION THAT IS PROPRIETARY TO MOLEX ELECTRONIC TECHNOLOGIES, LLC AND SHOULD NOT BE USED WITHOUT WRITTEN PERMISSION									
DIMENSION UNITS		SCALE		CURRENT REV DESC: MIGRATED TO NX					
mm		NTS							
GENERAL TOLERANCES (UNLESS SPECIFIED)									
		MM	INCH	MGRID 2MM RECEPTACLE 4.50MM HT.					
4 PLACES	±			PRODUCT CUSTOMER DRAWING					
3 PLACES	±			DOCUMENT NUMBER					
2 PLACES	±	0.2		SD-87381-XX68					
1 PLACE	±			DOC TYPE					
0 PLACES	±			PSD					
ANGULAR TOL		± 3.0°		DOC PART					
				001					
DRAFT WHERE APPLICABLE MUST REMAIN WITHIN DIMENSIONS		THIRD ANGLE PROJECTION		DRAWING		SERIES		SHEET NUMBER	
				A3-SIZE		87381		2 OF 2	