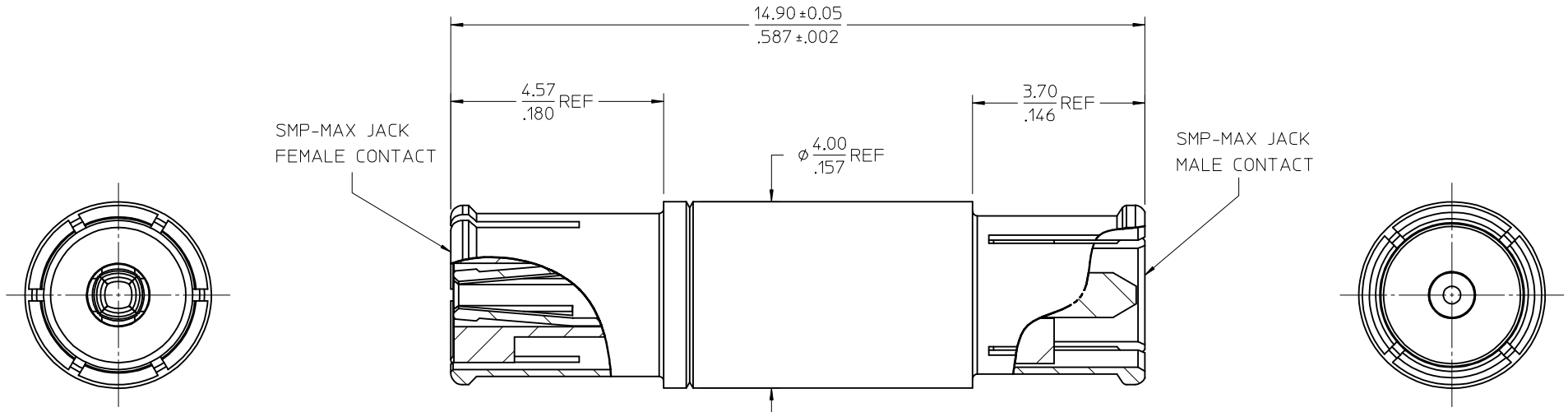
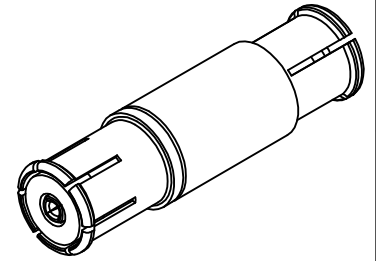


MATERIALS AND FINISHES:

BODY, CONTACT: BERYLLIUM COPPER
 PLATED: GOLD (8μ-in MIN)
 OVER NICKEL PHOSPHOR (80μ-in MIN)

INSULATORS: PTFE



PART # 73420-0210

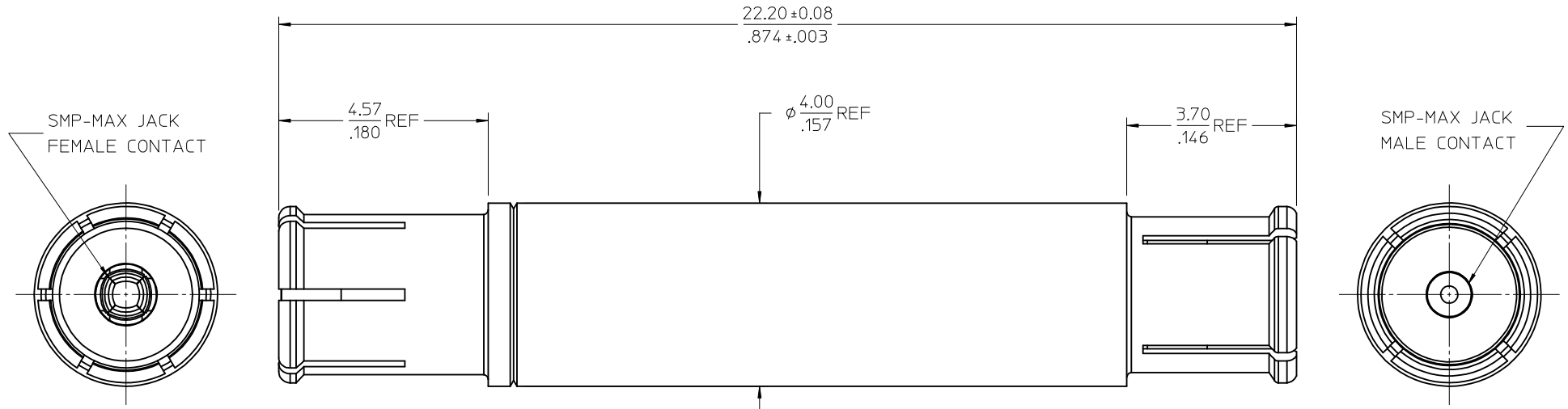
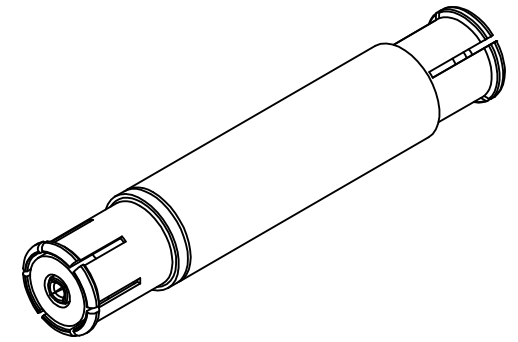
| | | | | | | | | | | |
|---------------|-----------------------|---|--------------------------------------|--|---|--|-------|------------------------------|------------------------|------------------------|
| PS-89675-3760 | ELEC/MECH PERFORMANCE | CHG: ADD TOLERANCE TO DIM 14.90/587 IN H7 ZONE OF SHT 1 & TO DIM 22.20/.874 IN H7 ZONE OF SHT 2. UPD MATERIALS AND FINISHES NOTE. EC NO: URF2017-0447 DRWINAPRAKASH01 2017/06/13 CHKD:BBB 2017/06/13 APPR:AROBERTSON 2017/06/28 | QUALITY SYMBOLS ∇=0 ∇=0 ∇=0 | GENERAL TOLERANCES (UNLESS SPECIFIED) | | DIMENSION STYLE MM/IN | | SCALE | DESIGN UNITS METRIC | THIRD ANGLE PROJECTION |
| | | | | 4 PLACES ± --- ± --- 3 PLACES ± --- ± .010 2 PLACES ± 0.25 ± --- 1 PLACE ± --- ± --- 0 PLACE ± --- ± --- | mm INCH ± --- ± --- ± .010 ± --- ± --- ± --- ± --- ± --- ± --- | DRAWN BY DATE AROBERTSON 2010/04/21 CHECKED BY DATE SSS 2010/04/24 APPROVED BY DATE JW IENER 2010/10/21 | TITLE | | | |
| SPECIFICATION | DESCRIPTION | B2 | REV | DRAFT WHERE APPLICABLE MUST REMAIN WITHIN DIMENSIONS | | MATERIAL NO. 734200210 | | DOCUMENT NO. SD-73420-021 | SHEET NO. 1 OF 2 | |

THIS DRAWING CONTAINS INFORMATION THAT IS PROPRIETARY TO MOLEX INCORPORATED AND SHOULD NOT BE USED WITHOUT WRITTEN PERMISSION

MATERIALS AND FINISHES:

BODY, CONTACT: BERYLLIUM COPPER
 PLATED: GOLD (8μ-in MIN)
 OVER NICKEL PHOSPHOR (80μ-in MIN)

INSULATORS: PTFE



PART # 73420-0211

| | | | | | | | | | | | |
|---------------|-----------------------|--|-------------|-----------------|--|--------|-----------------|---|------------|--|------------------------|
| PS-89675-3760 | ELEC/MECH PERFORMANCE | CHG: SEE SHEET 1 EC NO: URF-2017-0417 DRAWN: PRAKASHO1 2017/06/13 CHKD: BBB 2017/06/13 APPR: AROBERTSON 2017/06/28 | DESCRIPTION | QUALITY SYMBOLS | GENERAL TOLERANCES (UNLESS SPECIFIED) | | DIMENSION STYLE | | SCALE | DESIGN UNITS | THIRD ANGLE PROJECTION |
| | | | | | mm | INCH | MM/IN | METRIC | ☉ | | |
| SPECIFICATION | DESCRIPTION | B2 | REV | ▽=0 | 4 PLACES | ± .010 | ± .010 | DRAWN BY | DATE | TITLE | |
| | | | | | 3 PLACES | ± .010 | ± .010 | AROBERTSON | 2010/04/21 | 50 OHM SMP-MAX FEMALE TO SMP-MAX MALE BULLET SMPMAX-BULLET, EWR-4362 | |
| | | | | ▽=0 | 2 PLACES | ± 0.25 | ± .010 | CHECKED BY | DATE | | |
| | | | | ▽=0 | 1 PLACE | ± .010 | ± .010 | SSS | 2010/04/24 | | |
| | | | | ▽=0 | 0 PLACE | ± .010 | ± .010 | APPROVED BY | DATE | DOCUMENT NO. | SHEET NO. |
| | | | | | ANGULAR ± 2 ° | | JWIENER | | 2010/10/21 | SD-73420-021 | 2 OF 2 |
| | | | | | DRAFT WHERE APPLICABLE MUST REMAIN WITHIN DIMENSIONS | | SIZE | THIS DRAWING CONTAINS INFORMATION THAT IS PROPRIETARY TO MOLEX INCORPORATED AND SHOULD NOT BE USED WITHOUT WRITTEN PERMISSION | | | |