

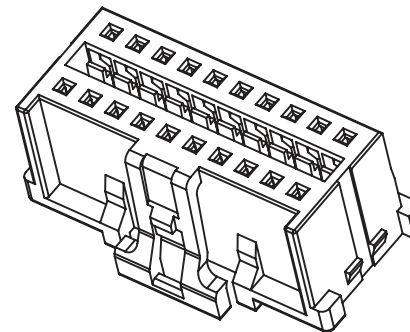
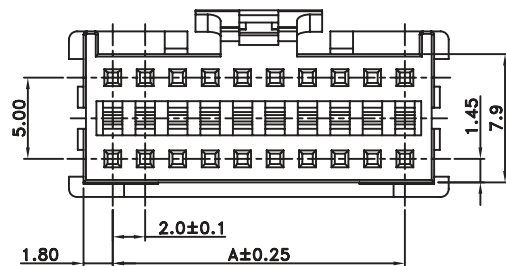
1

2

3

4

5



TECHNICAL CHARACTERISTICS

MATERIAL  
 INSULATOR: NY 66  
 FLAMMABILITY RATING: UL94-V0  
 COLOR: WHITE  
 PITCH: 2.00 MM

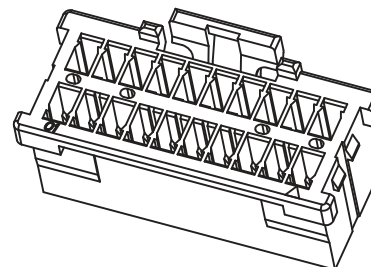
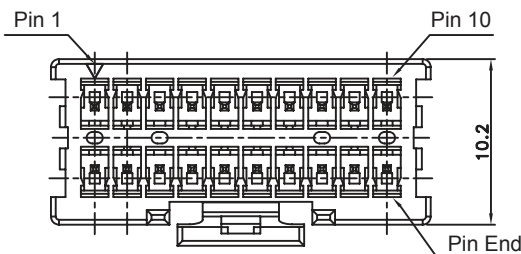
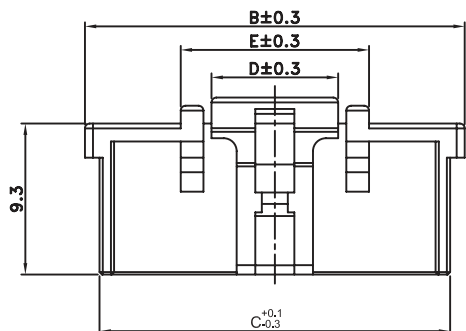
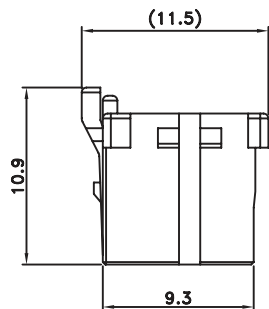
ENVIRONMENTAL  
 OPERATING TEMPERATURE: -25 UP TO 85°C  
 COMPLIANCE: LEAD FREE AND ROHS

ELECTRICAL  
 INSULATOR RESISTANCE: >1000 MOHM  
 DIELECTRIC WITHSTANDING VOLTAGE: 1000 VAC/MN

STANDARD  
 IEC 60309-2 CERTIFIED: E323964

PACKAGING  
 BAG

| Poles | Dimension(mm) |      |      |     |      |
|-------|---------------|------|------|-----|------|
|       | A             | B    | C    | D   | E    |
| 4x2   | 6.0           | 11.4 | 9.6  | 4.7 | 8.4  |
| 5x2   | 8.0           | 13.4 | 11.6 | 4.7 | 8.4  |
| 6x2   | 10.0          | 15.4 | 13.6 | 7.8 | 11.6 |
| 7x2   | 12.0          | 17.4 | 15.6 | 7.8 | 11.6 |
| 8x2   | 14.0          | 19.4 | 17.6 | 7.8 | 11.6 |
| 9x2   | 16.0          | 21.4 | 19.6 | 7.8 | 11.6 |
| 10x2  | 18.0          | 23.4 | 21.6 | 7.8 | 11.6 |
| 11x2  | 20.0          | 25.4 | 23.6 | 7.8 | 11.6 |
| 12x2  | 22.0          | 27.4 | 25.6 | 7.8 | 11.6 |
| 13x2  | 24.0          | 29.4 | 27.6 | 7.8 | 11.6 |
| 14x2  | 26.0          | 31.4 | 29.6 | 7.8 | 11.6 |
| 15x2  | 28.0          | 33.4 | 31.6 | 7.8 | 11.6 |
| 16x2  | 30.0          | 35.4 | 33.6 | 7.8 | 11.6 |
| 17x2  | 32.0          | 37.4 | 35.6 | 7.8 | 11.6 |
| 18x2  | 34.0          | 39.4 | 37.6 | 7.8 | 11.6 |
| 19x2  | 36.0          | 41.4 | 39.6 | 7.8 | 11.6 |
| 20x2  | 38.0          | 43.4 | 41.6 | 7.8 | 11.6 |



|     |           |                |    |
|-----|-----------|----------------|----|
| G   |           |                |    |
| F   |           |                |    |
| E   |           |                |    |
| D   | 01-SEP-16 | CERTIFIED      | AK |
| C   | 25-JAN-16 | TPK UPDATE     | AK |
| B   | 06-AUG-13 | CHARACTERISTIC | QL |
| A   | 15-MAY-12 | PDF            | GG |
| REV | DATE      | FILE           | BY |

PROJECTION:

APPROVAL: BBu

GENERAL TOLERANCE  
 .X = +/- 0.2  
 .XX = +/- 0.15

UNIT: MM  
 SCALE:  
 SHEET: 1/3  
 DRAW: MIKE

DESCRIPTION: 2.00 MM DUAL ROW FEMALE TERMINAL HOUSING

WERI PART NO: 624 0xx 213 322

SIZE  
**A4**

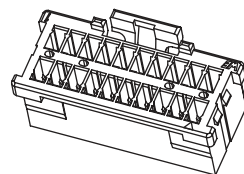
1

2

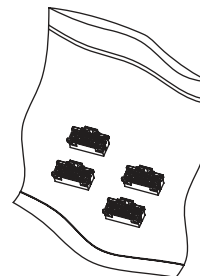
3

4

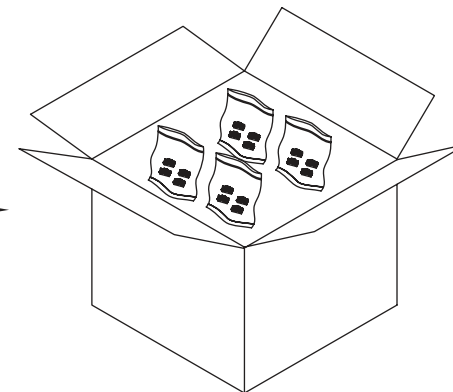
5



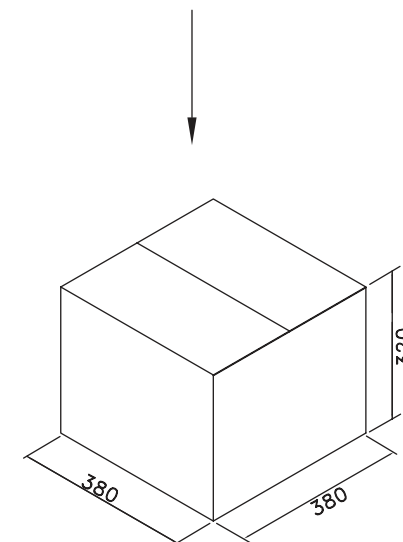
BAG PACKING



CARTON PACKING



| Poles | BAG PACKING  |                | Carton PACKING |                |
|-------|--------------|----------------|----------------|----------------|
|       | SPCE         | Quantity (pcs) | Quantity (bag) | Quantity (pcs) |
| 4x2   | 309*256*0.08 | 1000           | 20             | 20,000         |
| 5x2   | 309*256*0.08 | 1000           | 20             | 20,000         |
| 6x2   | 309*256*0.08 | 1000           | 18             | 18,000         |
| 7x2   | 309*256*0.08 | 1000           | 16             | 16,000         |
| 8x2   | 309*256*0.08 | 1000           | 14             | 14,000         |
| 9x2   | 309*256*0.08 | 1000           | 12             | 12,000         |
| 10x2  | 309*256*0.08 | 500            | 22             | 11,000         |
| 11x2  | 309*256*0.08 | 500            | 22             | 11,000         |
| 12x2  | 309*256*0.08 | 500            | 22             | 11,000         |
| 13x2  | 309*256*0.08 | 500            | 20             | 10,000         |
| 14x2  | 309*256*0.08 | 500            | 20             | 10,000         |
| 15x2  | 309*256*0.08 | 500            | 18             | 9,000          |
| 16x2  | 309*256*0.08 | 250            | 32             | 8,000          |
| 17x2  | 309*256*0.08 | 250            | 28             | 7,000          |
| 18x2  | 309*256*0.08 | 250            | 24             | 6,000          |
| 19x2  | 309*256*0.08 | 250            | 20             | 5,000          |
| 20x2  | 309*256*0.08 | 250            | 16             | 4,000          |



|     |      |      |    |               |                   |  |   |                   |
|-----|------|------|----|---------------|-------------------|--|---|-------------------|
| G   |      |      |    | PROJECTION:   | GENERAL TOLERANCE |  | DESCRIPTION: WTB 2.00MM DUAL ROWS TERMINAL HOUSING<br>WERI PART NO: 624 0xx 213 322 | SIZE<br><b>A4</b> |
| F   |      |      |    |               | .X = +/- 0.2      |  |   |                   |
| E   |      |      |    |               | .XX = +/- 0.15    |  |   |                   |
| D   |      |      |    |               |                   |  |   |                   |
| C   |      |      |    | APPROVAL: BBu | UNIT: MM          |  |   |                   |
| B   |      |      |    |               | SCALE:            |  |   |                   |
| A   |      |      |    |               | SHEET: 2/3        |  |   |                   |
| REV | DATE | FILE | BY |               | DRAW: MIKE        |  |   |                   |

1

2

3

4

5

## Cautions and Warnings:

This electronic component is designed and developed with the intention for use in general electronics equipments.

Before incorporating the components into any equipments in the field such as aerospace, aviation, nuclear control, submarine, transportation, (automotive control, train control, ship control), transportation signal, disaster prevention, medical, public information network etc. where higher safety and reliability are especially required or if there is possibility of direct damage or injury to human body, Würth Elektronik must be asked for a written approval.

In addition, even electronic component in general electronic equipments, when used in electrical circuits that require high safety, reliability functions or performance, the sufficient reliability evaluation-check for the safety must be performed before by the user before usage.

A

B

C

RoHS Compliant

|     |           |      |    |  |   |   |                   |
|-----|-----------|------|----|--|---|---|-------------------|
| G   |           |      |    | PROJECTION:<br> | GENERAL TOLERANCE<br>.X = +/- 0.2<br>.XX = +/- 0.15 |  |                   |
| F   |           |      |    |  |   |   |                   |
| E   |           |      |    |  |   |   |                   |
| D   |           |      |    |  |   |   |                   |
| C   |           |      |    | APPROVAL: JC   | UNIT: MM  | DESCRIPTION: DISCLAIMER   | SIZE<br><b>A4</b> |
| B   |           |      |    |  | SCALE:  |   |                   |
| A   | 10-SEP-14 | PDF  | QL |  | SHEET: 3/3  | WERI PART NO: DISCLAIMER  |                   |
| REV | DATE      | FILE | BY |  | DRAW: QL  |   |                   |

D