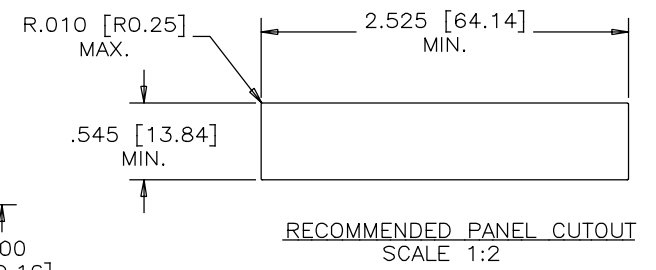
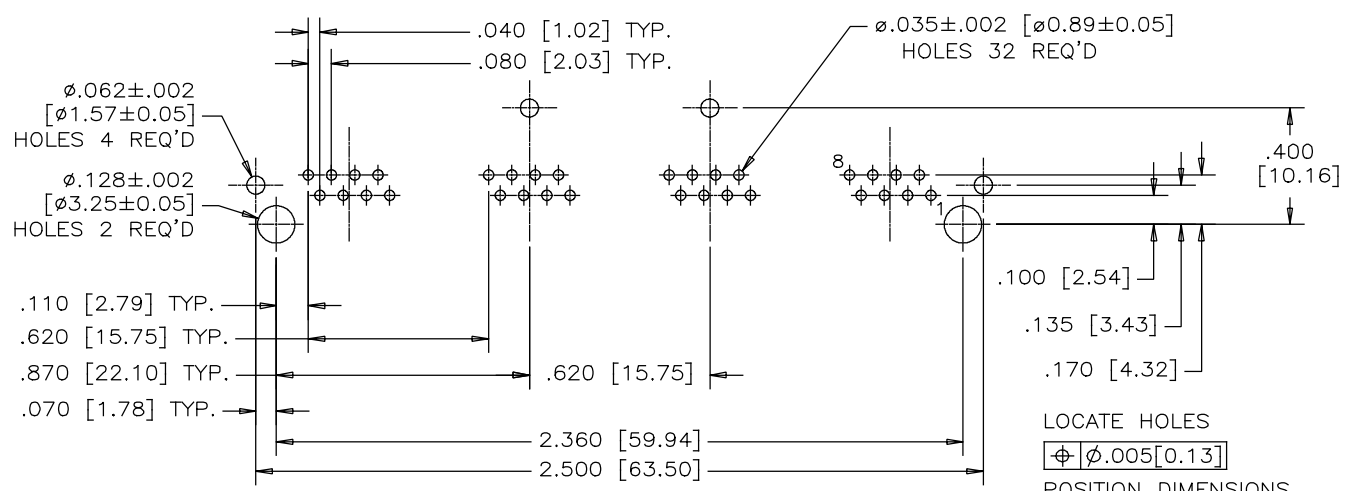
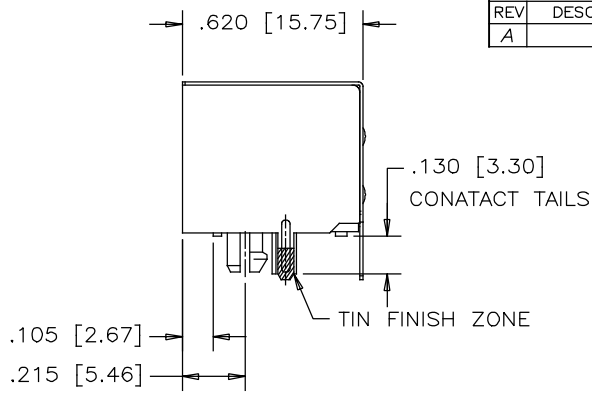
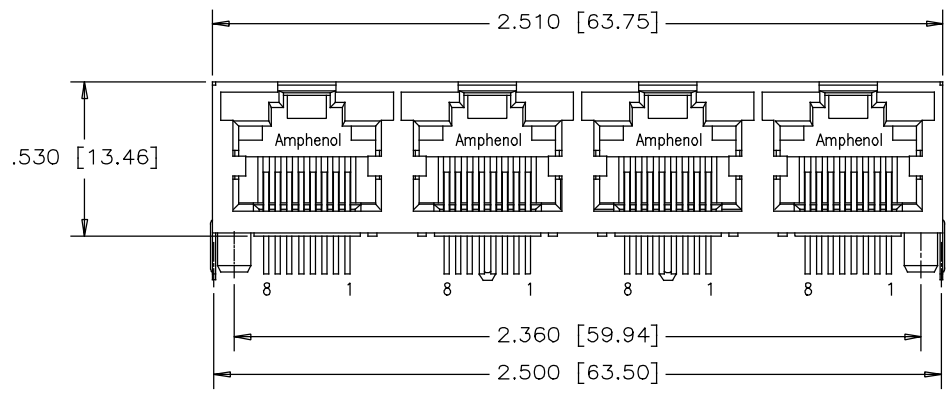


REVISIONS			
REV	DESCRIPTION, ECN, EAR NO.	DATE	APP'D
A	PROPOSAL	AMR13/18	L.CHAN



RECOMMENDED P.C.B. LAYOUT  
(COMPONENT SIDE OF BOARD)

**MATERIALS:**  
PLASTIC HOUSING: HIGH TEMPERATURE THERMOPLASTIC  
FLAMMABILITY RATING UL 94V-0, COLOR BLACK

**CONTACTS:** PHOSPHOR BRONZE  
PLATING: GOLD PLATING ON MATING SURFACE.  
[SEE PART NUMBER FOR THICKNESS]  
50 μ" [1.27 MICRONS]  
MIN. NICKEL UNDERPLATE  
100 μ" [2.54 MICRONS]  
MIN. MATTE TIN ON CONTACT TAILS.

**SHIELD:** STAINLESS STEEL WITH TIN FINISH ON SOLDER TAIL

LOCATE HOLES  
 $\phi \phi .005 [0.13]$   
POSITION DIMENSIONS  
ARE BASIC

PART NUMBER: RJHSE--XF80--A4

GOLD PLATING  
E=RJ45 FLAT CONTACT 6u"  
G=RJ45 FLAT CONTACT 15u"  
J=RJ45 FLAT CONTACT 30u"  
5=RJ45 FLAT CONTACT 50u"

UNLESS SPECIFIED OTHERWISE	DRAWN <i>W.QIU</i>	DATE <i>MAR13/18</i>	<b>Amphenol Canada Corp.</b> www.amphenolcanada.com
PRIMARY UNITS INCH	CHECKED <i>L.CHAN</i>	DATE <i>MAR13/18</i>	
SECONDARY MILLIMETER	M.E. APP'D		TITLE FOUR-PORT HIGH SPEED MODULAR JACK, 8 POSITIONS, 8 CONTACTS, WITHOUT LED, SHIELD WITH NO TABS, 0.13" LONG CONTACT TAILS -RoHS COMPLIANT
REFERENCE IN PARENTHESES	Q.A. APP'D		DWG. NO. <b>P-RJHSE--XF80--A4</b>
GENERAL TOLERANCES	DWG APPR.		REV <b>A</b>
1 DECIMAL PLACE ±0.025	ENG. REL. NO.		CODE ID NO. 03554 DWG SIZE: c SCALE: N/A SHEET 1 OF 1
2 DECIMAL PLACES ±0.020	REF.		
3 DECIMAL PLACES ±0.015	THIRD ANGLE PROJECTION		
ANGULAR DEGREES ±1.0°	DO NOT SCALE DRAWING		