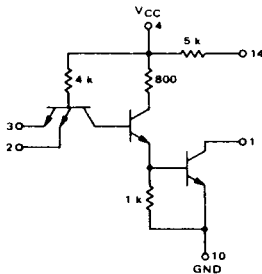


TRIPLE 2-INPUT
BUSS DRIVER

MTTL I MC500/400 series

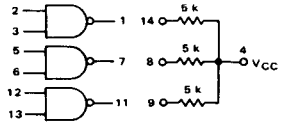
MC519 • MC569
MC419 • MC469

1/3 OF CIRCUIT SHOWN



This device consists of three 2-input NAND gates. High level output transistors with open collectors provide output current sinking capability of up to 30 mA. Internal 5 k pullup resistors, which can be externally connected to the collector of the output transistor, are provided for each gate in the package.

This function is useful where it is desirable to perform the Wired-OR function and/or drive relatively high dc loads.



Positive Logic: $1 = \overline{2 \cdot 3}$
Negative Logic: $1 = \overline{2 + 3}$

Total Power Dissipation = 54 mW typ/pkg

Propagation Delay Time (using 5.0 k ohm pullup resistor):

$t_{pd+} = 50$ ns typ

$t_{pd-} = 15$ ns typ

TYPE NO.	INPUT LOADING FACTOR	(I _F)	OUTPUT DRIVE (I _{OL})	TEMPERATURE RANGE
MC519 MC569	1	(-1.33 mA)	30 mA 15 mA	-55°C to +125°C
MC419 MC469	1	(-1.66 mA)	30 mA 15 mA	0°C to +75°C

SWITCHING TIME TEST CIRCUIT

VOLTAGE WAVEFORMS AND DEFINITIONS

