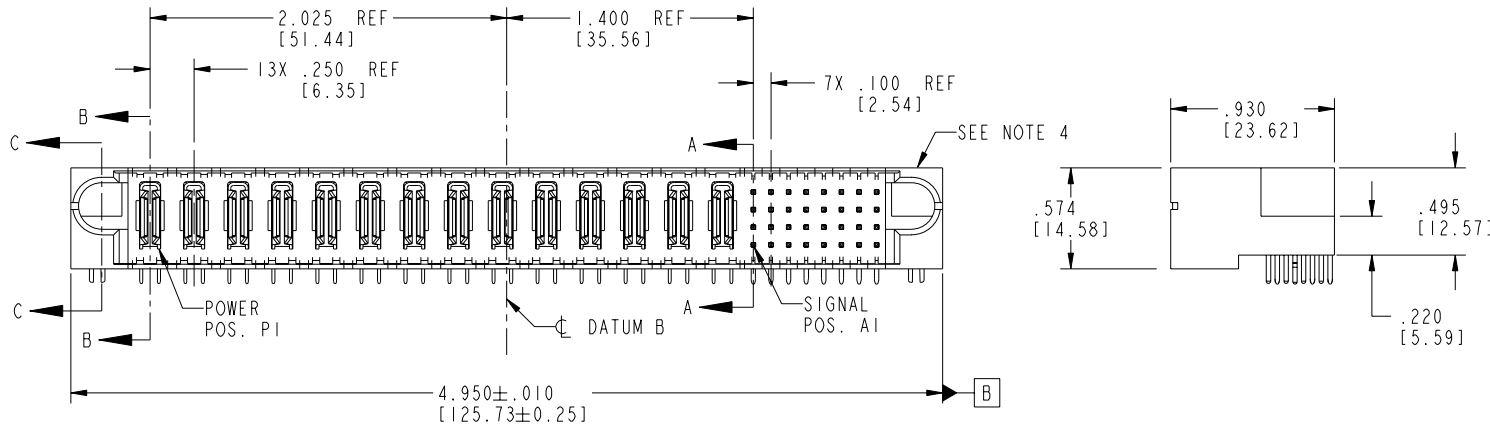
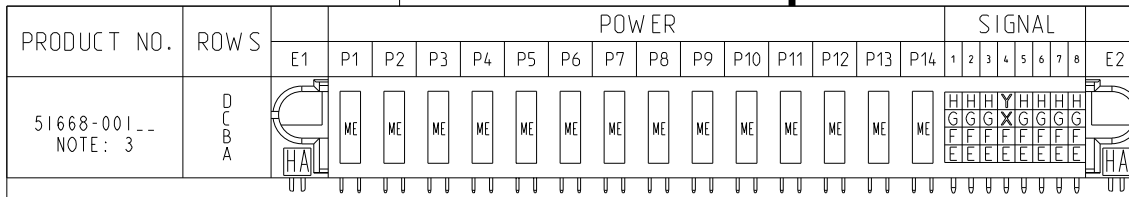


Tous droits strictement réservés. Reproduction ou communication à des tiers interdite sous quelque forme que ce soit sans autorisation écrite du propriétaire. Propriété de c FCI. Droits de reproduction FCI.

All rights strictly reserved. Reproduction or issue to third parties in any form whatever is not permitted without written authority from the proprietor. Property of FCI. Copyright FCI.



CODE	DIM "M" MATING LENGTH	CONTACT TYPE
E	.220 [5.59]	SIGNAL
F	.220 [5.59]	SIGNAL
G	.220 [5.59]	SIGNAL
H	.220 [5.59]	SIGNAL
X	.170 [4.32]	SIGNAL
Y	.170 [4.32]	SIGNAL
ME	.315 [8.00]	POWER
HA	N/A [N/A]	HOLD-DOWN

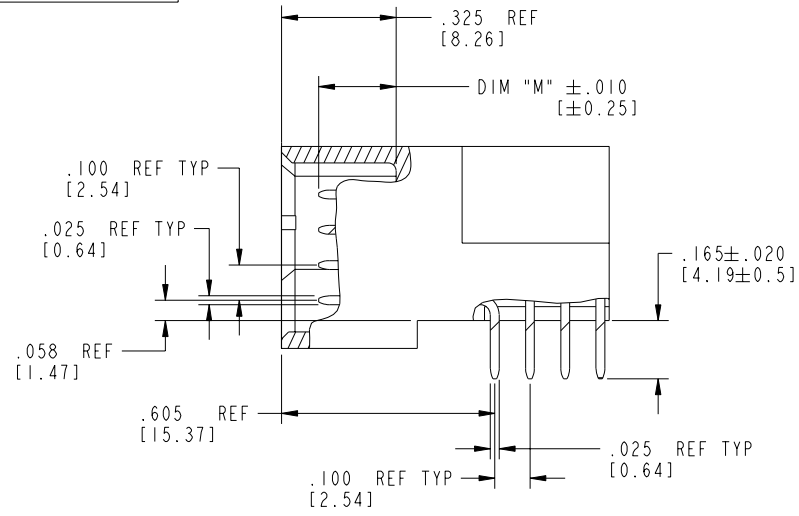
mat'l code		SEE NOTE 2		tolerances unless otherwise specified		CUSTOMER		 www.fciconnect.com	
ltr	ecn no.	dr	date	linear	XX±.01/0.XX±0.3	COPY		title	
A	V02392	JRW	10/09/00		.XXX±.005/0.XX±0.13	projection		14P + 32S	
B	V03-0248	TAB	03/19/03		.XXX±.002/0.XX±0.051			RIGHT ANGLE SOLDER HEADER	
C	V03-0536	MEM	5/9/03	angles	0°±2°	INCH/MM		product family PwrBlade	
D	V03-0671	MEM	6/13/03	dr	T. BRUNGARD 03/19/03	scale		code	
E	DG05-0300	GuoJM	08/26/05	engr	M. MOSTOLLER 03/19/03	1:1		size	
F	DG06-0011	CS	01/09/06	chr	M. MOSTOLLER 03/19/03			dwg no	
sheet index		revision	F	F	F			sheet	
		sheet	1	2	3			1 of 4	

cage code 22526 4

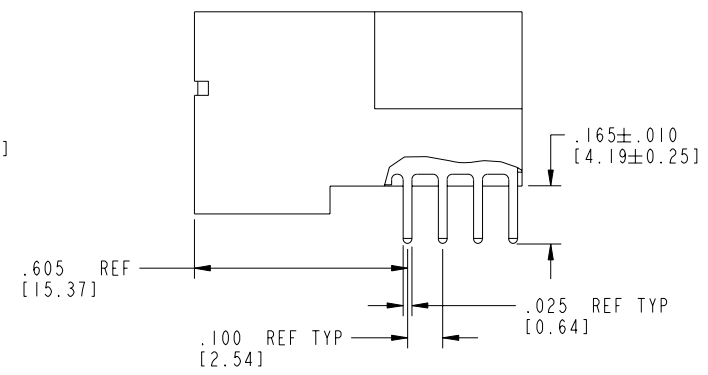
Tous droits strictement réservés. Reproduction ou communication à des tiers interdite sous quelque forme que ce soit sans autorisation écrite du propriétaire. Propriété de FCI. Droits de reproduction FCI.

All rights strictly reserved. Reproduction or issue to third parties in any form whatever is not permitted without written authority from the proprietor. Property of FCI. Copyright FCI.

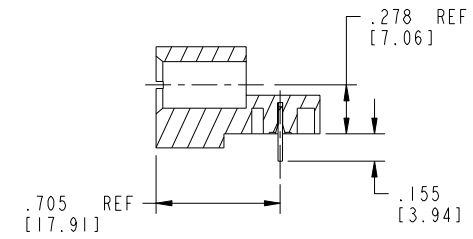
PRODUCT NUMBER
51668-001__
NOTE: 3



BROKEN-OUT SECTION A-A
SCALE 2:1



BROKEN-OUT SECTION B-B
SCALE 2:1



SECTION C-C

mat'l code		SEE NOTE 2		tolerances unless otherwise specified		CUSTOMER		 www.fciconnect.com	
ltr	ecn no.	dr	date	linear	.XX±.01/0.X±0.3	COPY		projection	title
F					.XXX±.005/0.XX±0.13				14P + 32S
				angles	.XXXX±.0020/0.XXX±0.051				RIGHT ANGLE SOLDER HEADER
				dr	0° ± 2°				product family
				enr	T. BRUNGARD 03/19/03	1:1			PwrBlade
				chr	M. MOSTOLLER 03/19/03			size	code
				appd	M. MOSTOLLER 03/19/03			51668	213
sheet index	revision sheet							scale	sheet
								A	2 of 4

cage code 22526

Pro/E

PDM: Rev:F

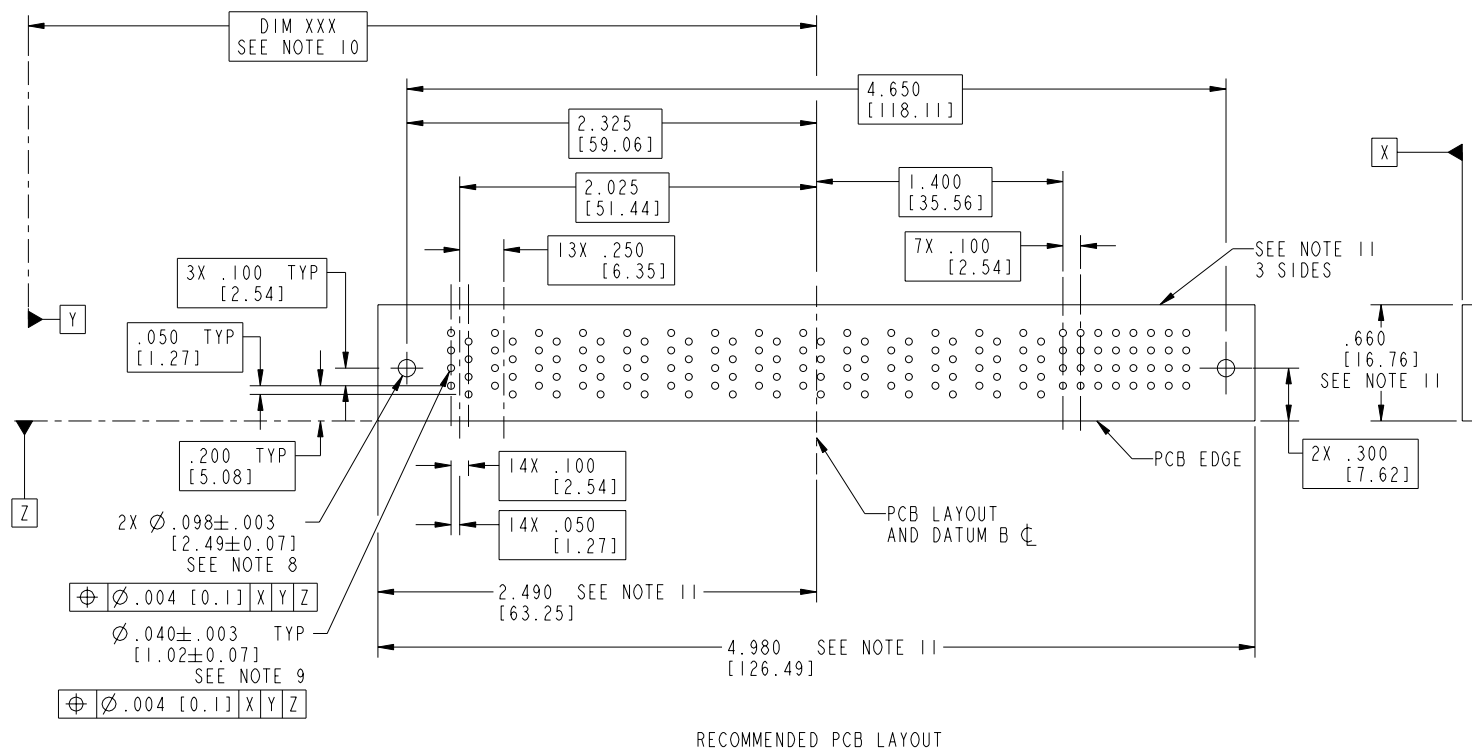
STATUS: Released

Printed: Dec 20, 2010

Tous droits strictement réservés. Reproduction ou communication a des tiers interdite sous quelque forme que ce soit sans autorisation écrite du propriétaire. Propriété de c FCI. Droits de reproduction FCI.

All rights strictly reserved. Reproduction or issue to third parties in any form whatever is not permitted without written authority from the proprietor. Property of FCI. Copyright FCI.

PRODUCT NUMBER
51668-001__
NOTE: 3



RECOMMENDED PCB LAYOUT

mat'l code				SEE NOTE 2		tolerances unless otherwise specified		CUSTOMER		 www.fciconnect.com	
ltr	ecn no.	dr	date	linear	.XX±.01/0.X±0.3	projection	COPY		title 14P + 32S		
F				angles	.XXX±.005/0.XX±0.13			RIGHT ANGLE SOLDER HEADER			
				dr	.XXX±.0020/0.XX±0.051	INCH/MM		product family PwrBlade		code 213	
				engr	0°±2°	scale 1:1		size dwg no 51668		sheet 3 of 4	
				chr	T. BRUNGARD 03/19/03						
				appd	M. MOSTOLLER 03/19/03						
sheet index		revision sheet									

cage code 22526

Pro/E

PDM: Rev:F

STATUS:Released

Printed: Dec 20, 2010

Tous droits strictement réservés. Reproduction ou communication à des tiers interdite sous quelque forme que ce soit sans autorisation écrite du propriétaire. Propriété de FCI. Droits de reproduction FCI.

A
FCI

All rights strictly reserved. Reproduction or issue to third parties in any form whatever is not permitted without written authority from the proprietor. Property of FCI. Copyright FCI.

B

PRODUCT NUMBER
51668-001__
NOTE: 3

NOTES:

1. DIMENSIONS AND TOLERANCES ARE IN ACCORDANCE WITH ASME Y14.5M, 1994 UNLESS OTHERWISE SPECIFIED.

CONNECTOR NOTES:

- 2. HOUSING MATERIAL: UL 94 V-0 GLASS FILLED HIGH-TEMP THERMOPLASTIC
POWER CONTACT MATERIAL: COPPER ALLOY
SIGNAL PIN MATERIAL: COPPER ALLOY
- 3. PLATING:
51668-001,51668-001LF,PLATING SPEC SEE PRINT:100064183.
- 4. MANUFACTURER'S NAME, P/N, AND DATE CODE TO APPEAR ON THIS SURFACE.
- 5. PRODUCT SPECIFICATION GS-12-149.
APPLICATION SPECIFICATION BUS-20-067.

6. PACKAGED IN TRAYS.

PCB NOTES:

- 7. ALL HOLE DIAMETERS ARE FINISHED HOLE SIZE.
- 8. MOUNTING HOLES, WHERE APPLICABLE, ARE UNPLATED.
- 9. $\varnothing .0453 \pm .0010$ [1.151 \pm 0.025] DRILLED HOLES PLATED WITH .0003 [0.008] MIN SnPb OVER .001 [0.03] TO .003 [0.08] Cu PLATING TO ACHIEVE $\varnothing .040 \pm .003$ [1.02 \pm .07] HOLE.
- 10. "DIM XXX" TO BE DETERMINED BY THE CUSTOMER.
- 11. CONNECTOR KEEP-OUT ZONE.

mat'l code				SEE NOTE 2		tolerances unless otherwise specified		CUSTOMER		A FCI		www.fciconnect.com	
ltr	ecn no.	dr	date	linear	.XX+ .01/0.X+0.3	projection		COPY		title		14P + 32S	
F					.XXX+ .005/0.XX+0.13	INCH/MM		product family		PwrBlade		code	
				angles	XXXX+ .0020/0.XXX+0.051	scale		size		dwg no		213	
				dr	0+2°	1:1		A		51668		sheet	
				enrg	T. BRUNGARD 03/19/03							4 of 4	
				chr	M. MOSTOLLER 03/19/03								
				appd	M. MOSTOLLER 03/19/03								
sheet index	revision sheet												

cage code 22526 4

Pro/E

PDM: Rev:F

STATUS:Released

Printed: Dec 20, 2010