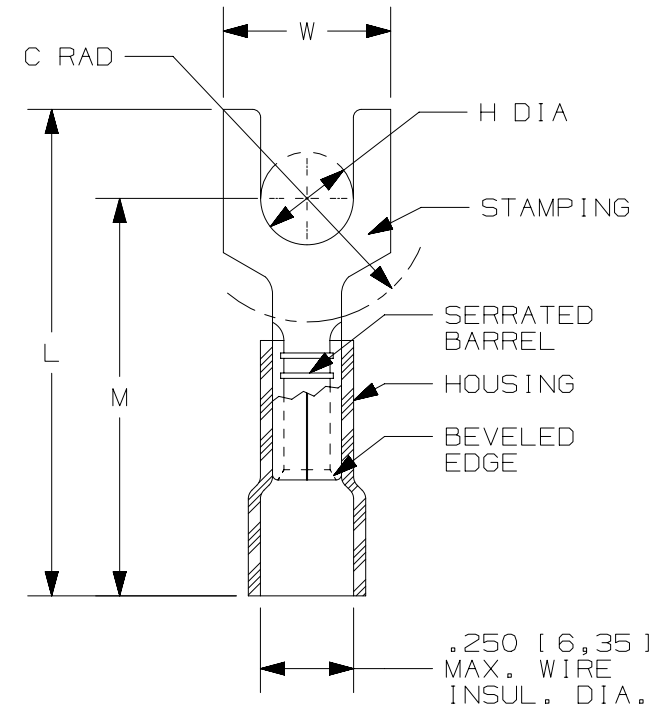


THIS COPY IS PROVIDED ON A RESTRICTED BASIS AND IS NOT TO BE USED IN ANY WAY DETRIMENTAL TO THE INTERESTS OF PANDUIT CORP.

PANDUIT PART #	STUD SIZE		DIMENSIONS in. [mm]				
	ENGLISH	METRIC	L ± .03 [0,8]	W ± .01 [0,3]	C ± .02 [0,5]	M ± .03 [0,8]	H ± .01 [0,3]
PV10-8FX	#8	M4	1.11 [28,19]	.37 [9,40]	.24 [6,10]	.88 [22,35]	.17 [4,32]
PV10-10FX	#10	M5	1.11 [28,19]	.37 [9,40]	.24 [6,10]	.88 [22,35]	.20 [5,08]
PV10-14FX	1/4"	M6	1.22 [30,99]	.50 [12,7]	.32 [8,13]	.97 [24,64]	.27 [6,86]



NOTES:

- USED FOR:
  - A. 12-10 AWG [4,0 - 6,0 mm<sup>2</sup>] SOLID OR STRANDED COPPER WIRE
  - B. 221°F [105°C] MAX. OPERATING TEMPERATURE
  - C. 600V. MAX. BLDG WIRE (1000 V. MAX. IN SIGNS, FIXTURES & LUMINAIRES)
- INSTALLATION TOOLS PANDUIT APPROVED:
  - A. UL APPROVED: CT-100, CT-600-A W/CT-550CH, CT-1550, CT-1551, CT-2500 W/CT-2550CH
- WIRE STRIP LENGTH: 5/16 <sup>+1/32</sup> [7,9 <sup>+0,8</sup>]
- MATERIAL:
  - A. STAMPING: .04" [1,02] THK COPPER, TIN PLATED
  - B. HOUSING: VINYL, YELLOW
- SEE [www.panduit.com](http://www.panduit.com) FOR PACKAGE QUANTITIES INDICATED BY PART NUMBER SUFFIX
- DIMENSIONS IN BRACKETS ARE METRIC EQUIVALENT



LISTED  
587H  
E52164



CERTIFIED  
LR31212

TITLE		<b>#12-10 BARREL VINYL INSULATED FORK, .250 [6,35] MAX WIRE INSUL. DIA.</b>	
ITEM REVISION NAME		CUSTOMER DRAWING	
DATASET FILE NAME		N41259BB_08	
UNLESS OTHERWISE SPECIFIED, DIMENSIONAL TOLERANCES ARE: IN [mm]		<b>PANDUIT</b> <sup>TM</sup>	
.x ± .1 [2,54]      .xxx ± .005 [0,127] .xx ± .01 [0,25]      ANGLES ± 5°			
DRAWING NUMBER:		SEE NOTES	
DRAWN BY		A41259	
DATE		DRAWING NUMBER:	
09.13.12		A41259	
CHK		DRAWING NUMBER:	
LA		A41259	
SCALE		DRAWING NUMBER:	
N.T.S.		A41259	
REV		DRAWING NUMBER:	
DAW		A41259	
DESCRIPTION		DRAWING NUMBER:	
ECN		A41259	
SHEET 1 OF 1		DRAWING NUMBER:	
A		A41259	

09	09.13.12	BDK	LCA	VMB	ADDED METRIC EQUIVALENT. CHANGE PACKAGING NOTE. REVISED INSTALLATION TOOLS NOTE. BROUGHT DRAWING TO CURRENT STANDARDS.	A41290
REV	DATE	BY	CHK	APR	DESCRIPTION	ECN

D10100DA/12