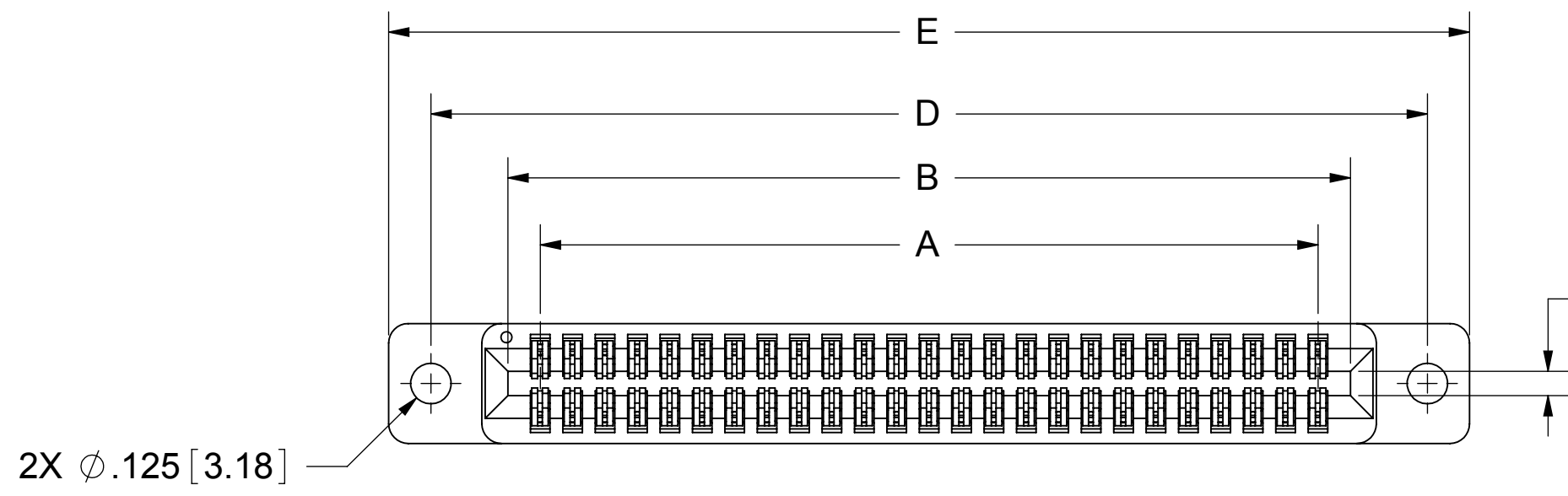
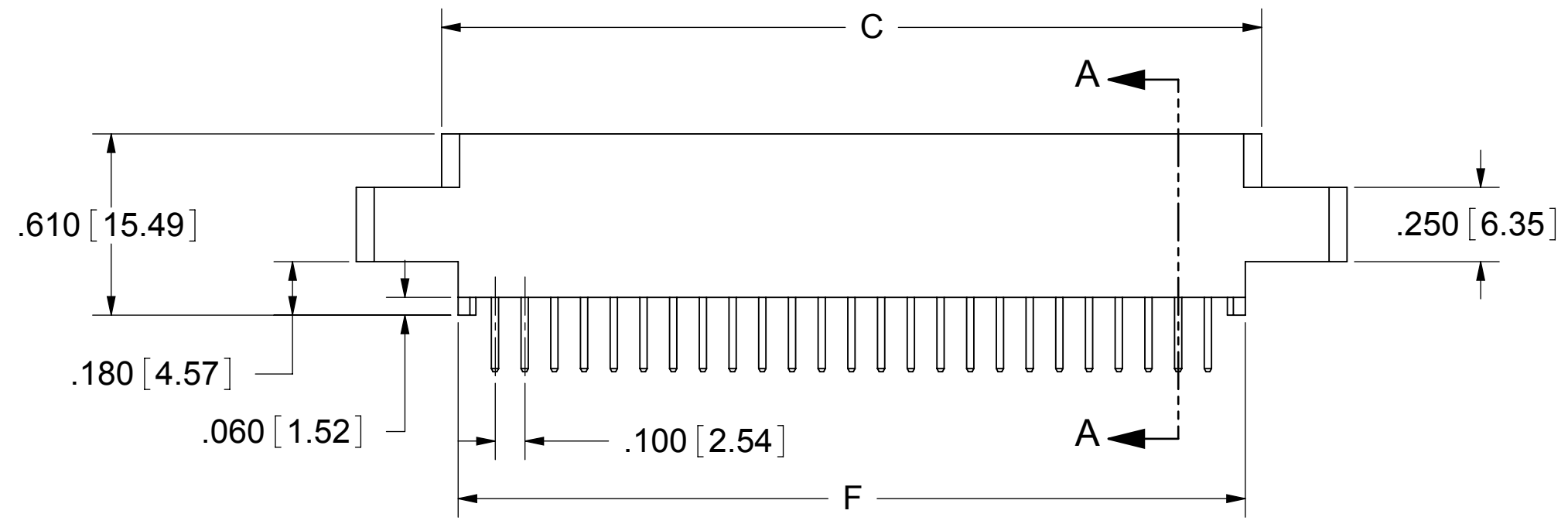


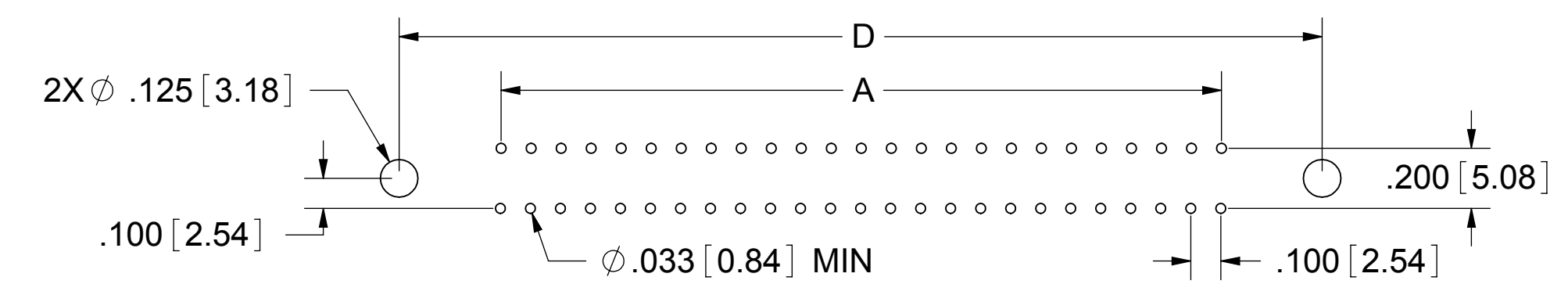
REVISIONS				
REV.	ECO. NO	DESCRIPTION	DATE	BY
A	2432	INITIAL RELEASE	08/19/11	SE



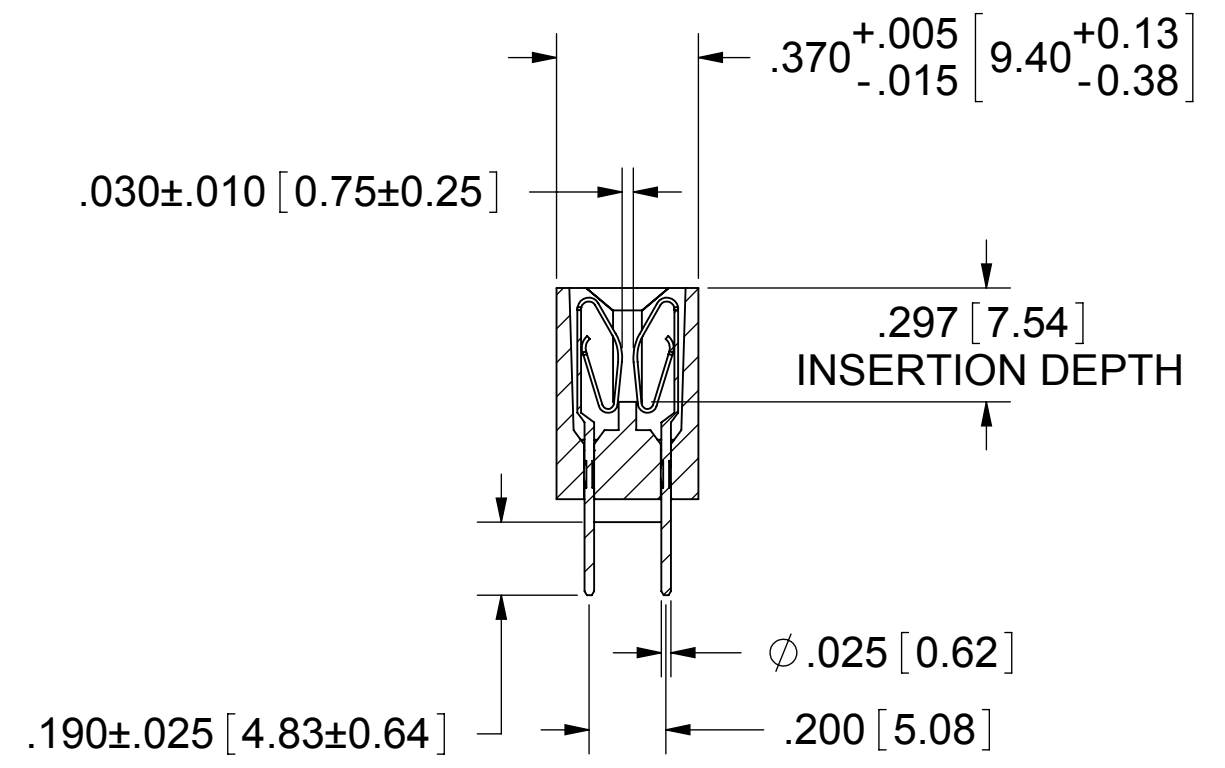
.075 [1.91]  
CARDSLOT  
SEE NOTE 13



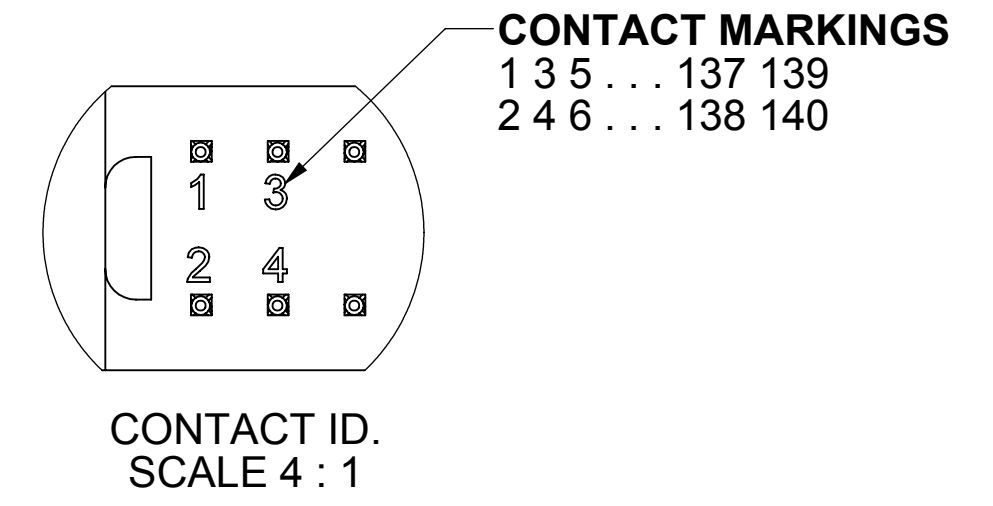
**MP\_\_-100\_\_-DR-5H\_**



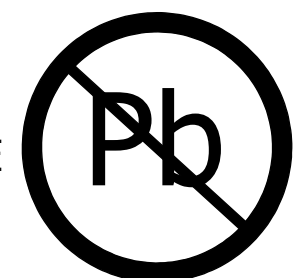
RECOMMENDED PCB LAYOUT



SECTION A-A



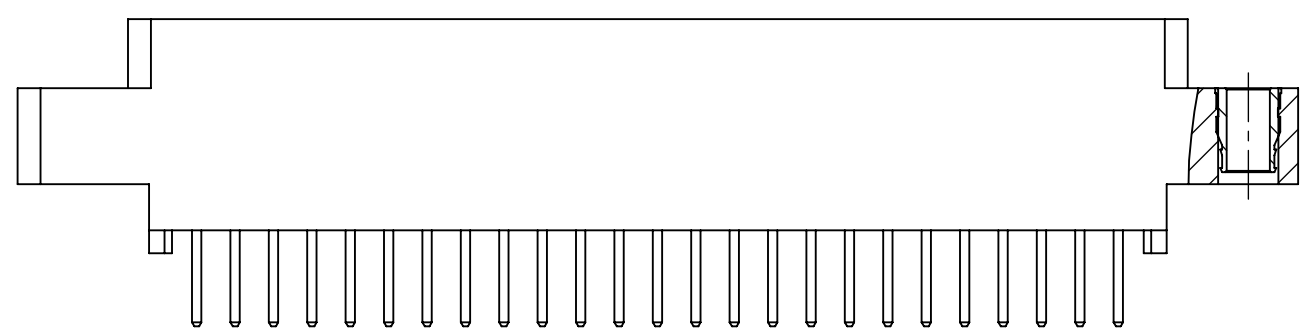
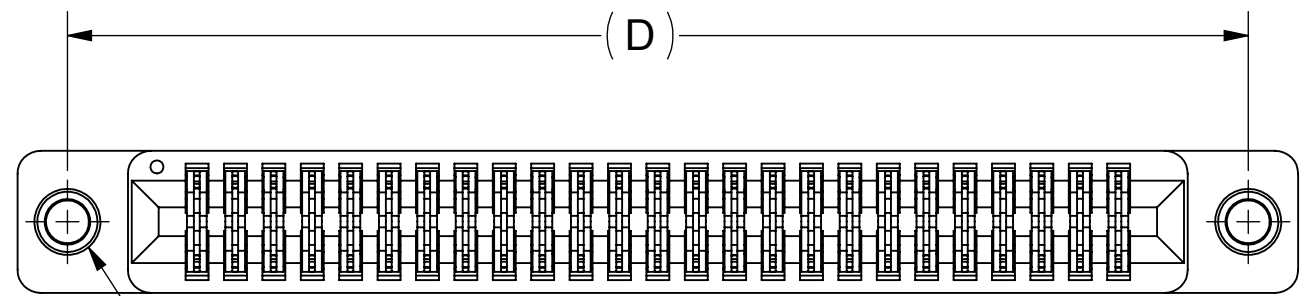
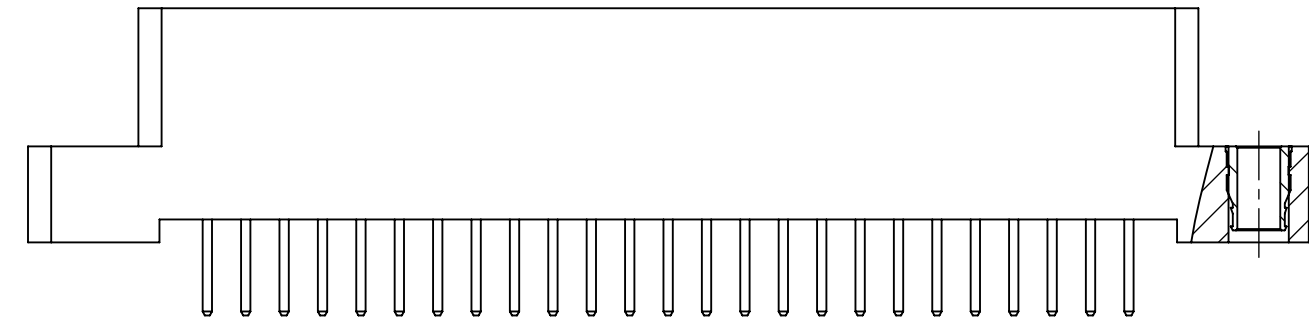
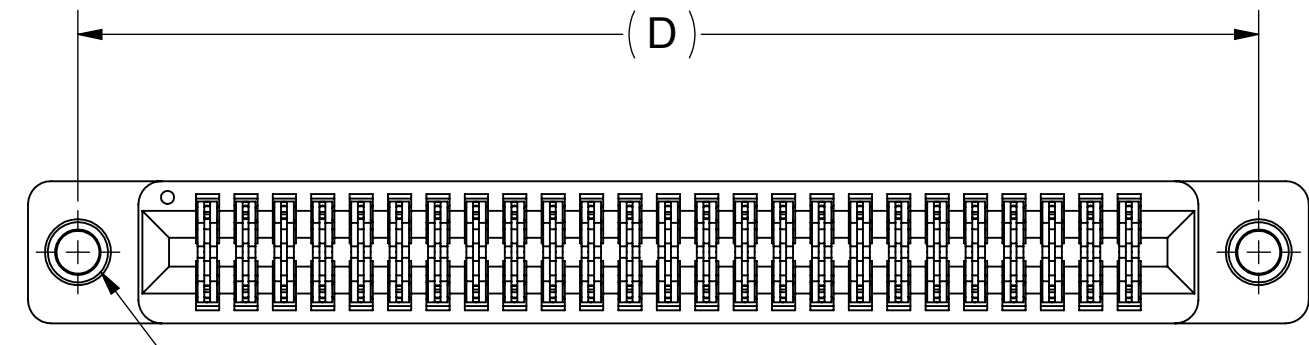
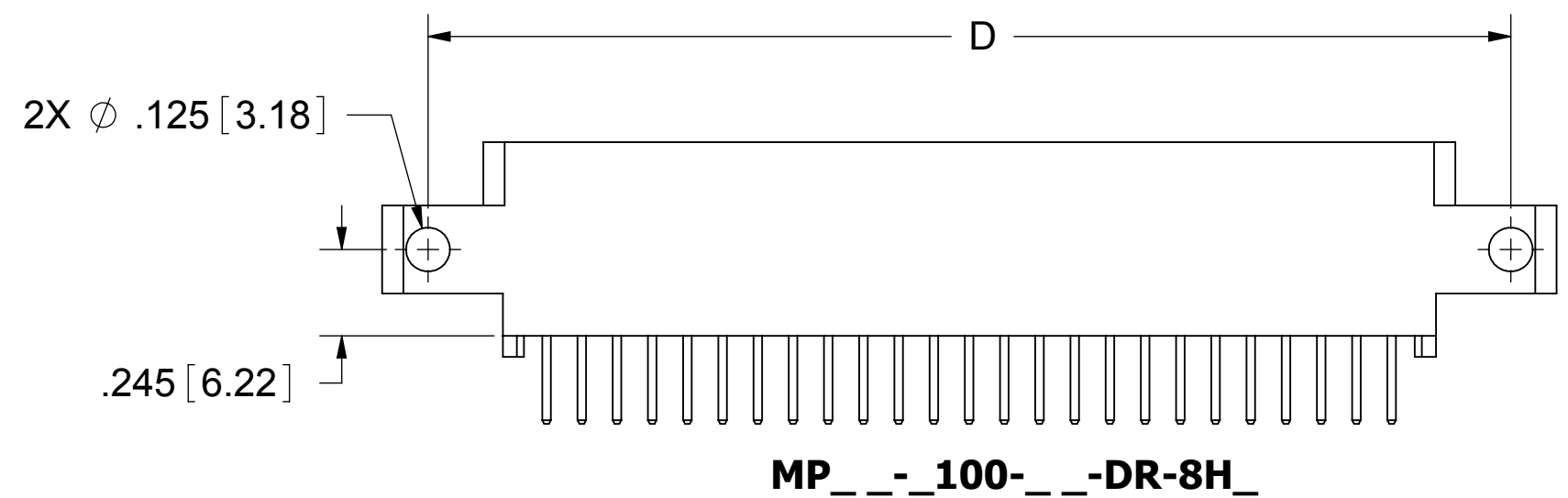
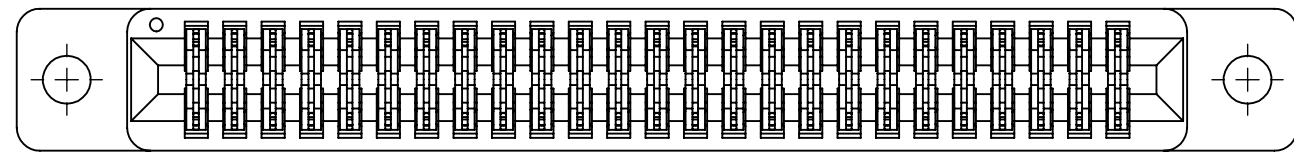
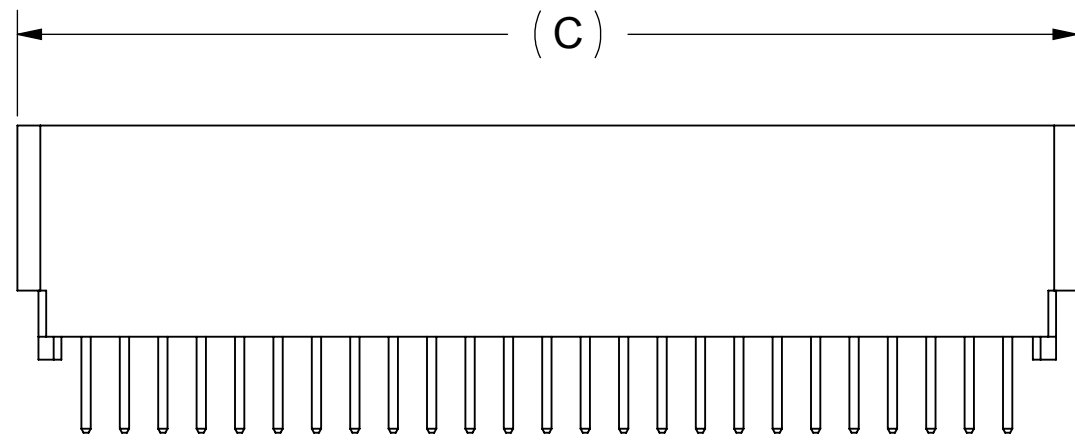
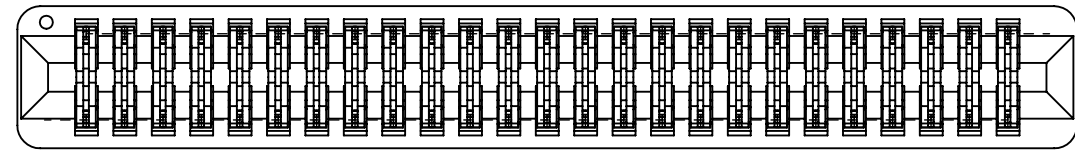
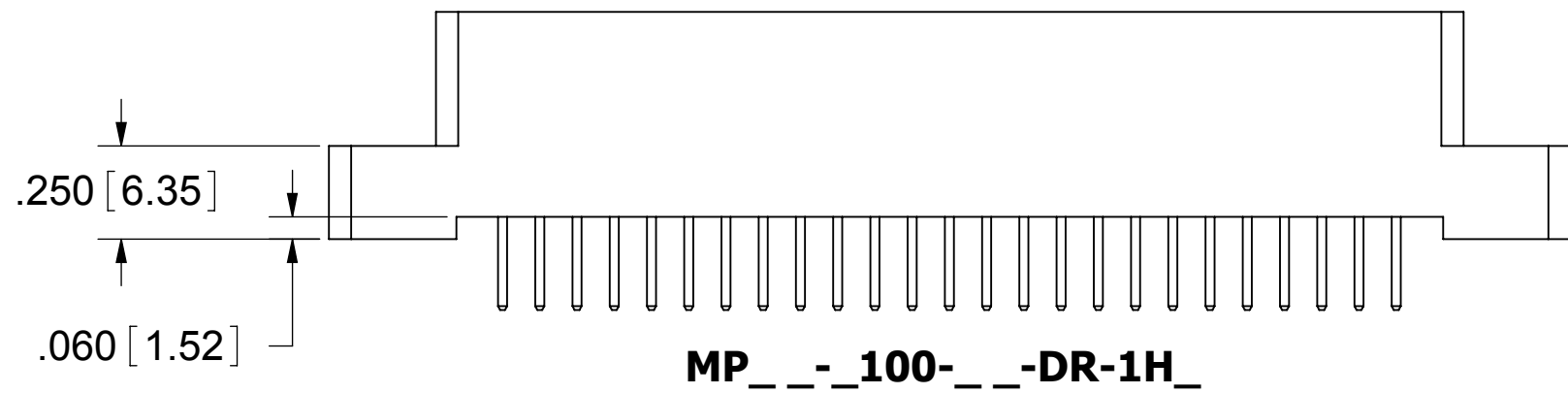
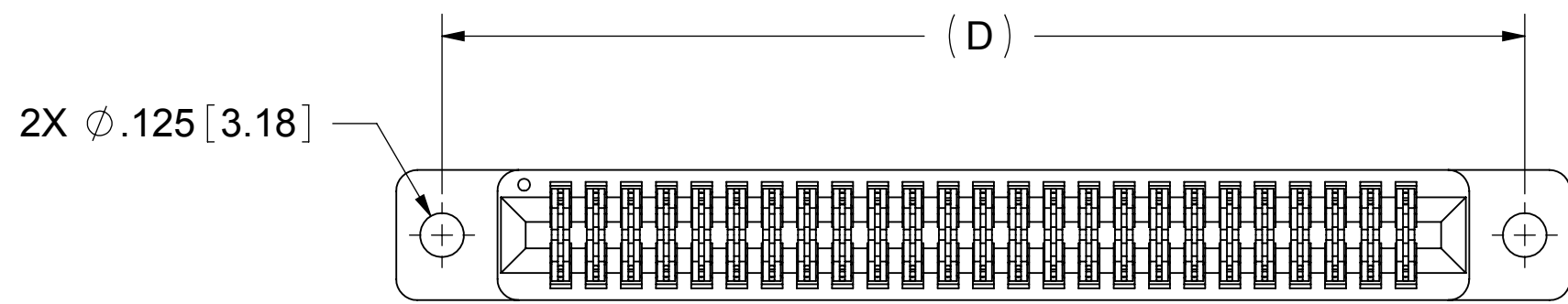
- NOTES:**
1. INSULATOR MATERIAL: SEE PART NUMBER CODING
  2. CONTACT MATERIAL: SEE PART NUMBER CODING
  3. PLATING: SEE PART NUMBER CODING
  4. OPERATING TEMPERATURE: SEE PART NUMBER CODING
  5. PROCESSING TEMP: SEE PART NUMBER CODING
  6. UL FLAMMABILITY RATING: 94V-0
  7. DIELECTRIC WITHSTANDING VOLTAGE: 750 VAC MINIMUM AT SEA LEVEL
  8. CURRENT RATING: 3 AMPS PER CONTACT
  9. CONTACT RESISTANCE: 30 MILLI OHMS MAX
  10. INSULATION RESISTANCE: 5000 MEGA OHMS
  11. DURABILITY: 500 CYCLES MIN
  12. CONNECTOR IDENTIFICATION: THE PART SHALL BE MARKED WITH A PART NUMBER AND LOT CODE
  13. BOARD THICKNESS ACCOMMODATED: .062±.008[1.57±0.20]
  14. INSERTION FORCE: 8 OZ MAX PER CONTACT PAIR WHEN USING A .062[1.57] TEST BLADE
  15. WITHDRAWAL FORCE: 1 OZ MIN PER CONTACT PAIR USING .062[1.57] TEST BLADE



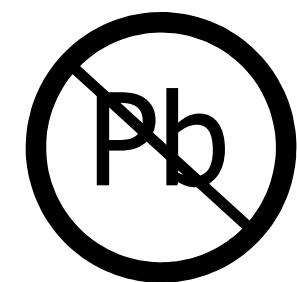
RoHS COMPLIANT

**CUSTOMER COPY**

UNLESS OTHERWISE SPECIFIED: DIMENSIONS ARE IN INCHES [MM]	DRAWN	DATE	NAME	
		08/18/11	SE	
TOLERANCES: ANGULAR: ± 30' .XX=± .02 [5] .XXX=± .005 [13] .XXXX=± .0005 [013]	<small>THE INFORMATION HEREIN CONTAINS PROPRIETARY INFORMATION OF SULLINS ELECTRONICS AND IS NOT TO BE REPRODUCED, USED OR DISCLOSED TO OTHERS FOR ANY PURPOSE EXCEPT AS SPECIFICALLY AUTHORIZED IN WRITING BY AN OFFICER OF SULLINS ELECTRONICS.</small>			TITLE
	INTERPRET DIMENSIONS AND TOLERANCING PER: ASME Y14.5M-2009			EDGE CARD, .100 CC HP
	SIZE	CAGE CODE	DWG. NO.	REV
	C	54453	C11872	A
	SCALE: 2:1	SHEET 1 OF 3		



**CUSTOMER COPY**



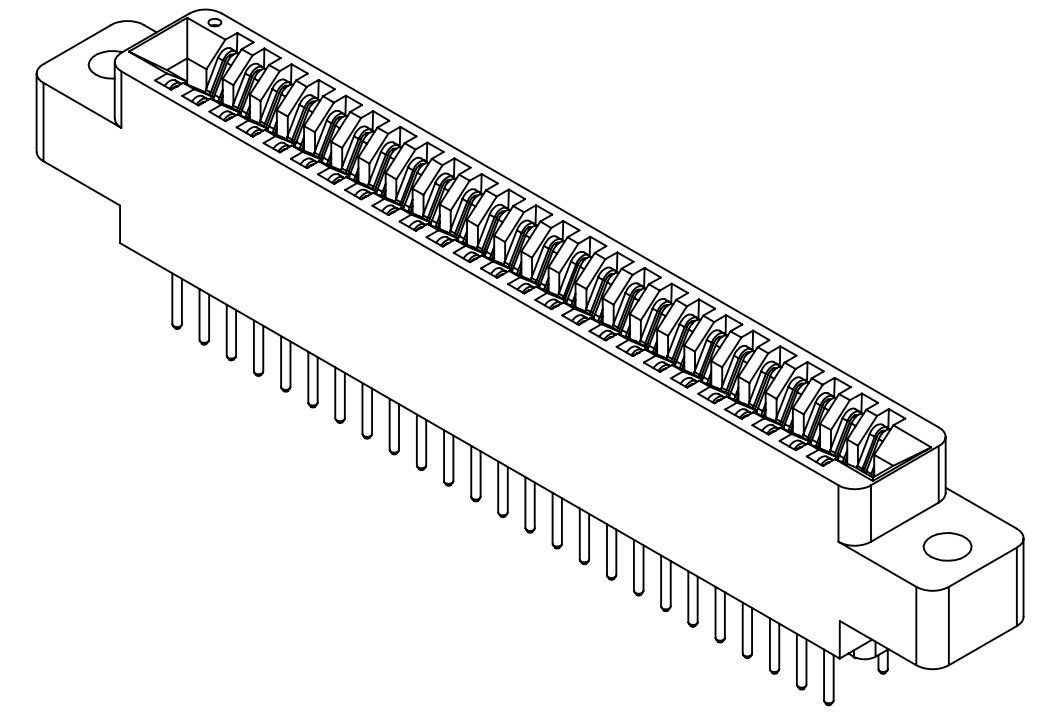
RoHS COMPLIANT

UNLESS OTHERWISE SPECIFIED:  
DIMENSIONS ARE IN INCHES [MM]  
TOLERANCES: ANGULAR: ± 30'  
.XX=± .02 [ .5]  
.XXX=± .005 [ .13]  
.XXXX=± .0005 [ .013]  
INTERPRET DIMENSIONS AND  
TOLERANCING  
PER: ASME Y14.5M-2009

DRAWN	DATE	NAME
	08/18/11	SE
<small>THE INFORMATION HEREIN CONTAINS PROPRIETARY INFORMATION OF SULLINS ELECTRONICS AND IS NOT TO BE REPRODUCED, USED OR DISCLOSED TO OTHERS FOR ANY PURPOSE EXCEPT AS SPECIFICALLY AUTHORIZED IN WRITING BY AN OFFICER OF SULLINS ELECTRONICS.</small>		

		TITLE	
		EDGECARD, .100 CC HP	
PART NUMBER		MP_ _100_ _-DR- _H_	
SIZE	CAGE CODE	DWG. NO.	REV
C	54453	C11872	A
SCALE: 2:1		SHEET 2 OF 3	

PART NUMBER	NO. OF POSITION	A±.008[0.20]		B±.008[0.20]		C±.015[0.38]		D±.010[0.25]		E±.020[0.51]		F±.015[0.38]	
		IN	MM	IN	MM	IN	MM	IN	MM	IN	MM	IN	MM
MP__-100-06-DR-H_	6	0.500	12.70	0.700	17.78	0.860	21.84	1.175	29.85	1.435	36.45	0.750	19.05
MP__-100-08-DR-H_	8	0.700	17.78	0.900	22.86	1.060	26.92	1.375	34.93	1.635	41.53	0.950	24.13
MP__-100-10-DR-H_	10	0.900	22.86	1.100	27.94	1.260	32.00	1.575	40.01	1.835	46.61	1.150	29.21
MP__-100-12-DR-H_	12	1.100	27.94	1.300	33.02	1.460	37.08	1.775	45.09	2.035	51.69	1.350	34.29
MP__-100-13-DR-H_	13	1.200	30.48	1.400	35.56	1.560	39.62	1.875	47.63	2.135	54.23	1.450	36.83
MP__-100-15-DR-H_	15	1.400	35.56	1.600	40.64	1.760	44.70	2.075	52.71	2.335	59.31	1.650	41.91
MP__-100-17-DR-H_	17	1.600	40.64	1.800	45.72	1.960	49.78	2.275	57.79	2.535	64.39	1.850	46.99
MP__-100-18-DR-H_	18	1.700	43.18	1.900	48.26	2.060	52.32	2.375	60.33	2.635	66.93	1.950	49.53
MP__-100-20-DR-H_	20	1.900	48.26	2.100	53.34	2.260	57.40	2.575	65.41	2.835	72.01	2.150	54.61
MP__-100-22-DR-H_	22	2.100	53.34	2.300	58.42	2.460	62.48	2.775	70.49	3.035	77.09	2.350	59.69
MP__-100-24-DR-H_	24	2.300	58.42	2.500	63.50	2.660	67.56	2.975	75.57	3.235	82.17	2.550	64.77
MP__-100-25-DR-H_	25	2.400	60.96	2.600	66.04	2.760	70.10	3.075	78.11	3.335	84.71	2.650	67.31
MP__-100-28-DR-H_	28	2.700	68.58	2.900	73.66	3.060	77.72	3.375	85.73	3.635	92.33	2.950	74.93
MP__-100-30-DR-H_	30	2.900	73.66	3.100	78.74	3.260	82.80	3.575	90.81	3.835	97.41	3.150	80.01
MP__-100-31-DR-H_	31	3.000	76.20	3.200	81.28	3.360	85.34	3.675	93.35	3.935	99.95	3.250	82.55
MP__-100-35-DR-H_	35	3.400	86.36	3.600	91.44	3.760	95.50	4.075	103.51	4.335	110.11	3.650	92.71
MP__-100-36-DR-H_	36	3.500	88.90	3.700	93.98	3.860	98.04	4.175	106.05	4.435	112.65	3.750	95.25
MP__-100-40-DR-H_	40	3.900	99.06	4.100	104.14	4.260	108.20	4.575	116.21	4.835	122.81	4.150	105.41
MP__-100-43-DR-H_	43	4.200	106.68	4.400	111.76	4.560	115.82	4.875	123.83	5.135	130.43	4.450	113.03
MP__-100-44-DR-H_	44	4.300	109.22	4.500	114.30	4.660	118.36	4.975	126.37	5.235	132.97	4.550	115.57
MP__-100-50-DR-H_	50	4.900	124.46	5.100	129.54	5.260	133.60	5.575	141.61	5.835	148.21	5.150	130.81
MP__-100-55-DR-H_	55	5.400	137.16	5.600	142.24	5.760	146.30	6.075	154.31	6.335	160.91	5.650	143.51
MP__-100-60-DR-H_	60	5.900	149.86	6.100	154.94	6.260	159.00	6.575	167.01	6.835	173.61	6.150	156.21
MP__-100-61-DR-H_	61	6.000	152.40	6.200	157.48	6.360	161.54	6.675	169.55	6.935	176.15	6.250	158.75
MP__-100-65-DR-H_	65	6.400	162.56	6.600	167.64	6.760	171.70	7.075	179.71	7.335	186.31	6.650	168.91
MP__-100-70-DR-H_	70	6.900	175.26	7.100	180.34	7.260	184.40	7.575	192.41	7.835	199.01	7.150	181.61



**PART NUMBER CODING**

MP\_\_ - 100 - \_\_ - DR - H

**CONTACT MATERIAL**

OMIT= PHOSPHOR BRONZE (SEE TABLE 2)  
Y= BERYLLIUM COPPER (SEE TABLE 3)

**PLATING MODIFICATION CODE (SEE TABLE 1)**

**MOUNTING STYLE**

- 1= .125" DIA. CLEARANCE HOLES
- 2= #4-40 THREADED INSERT
- 4= NO MOUNTING EARS
- 5= RAISED WITH .125" CLEARANCE HOLES
- 6= RAISED WITH #4-40 THREADED INSERT
- 8= .125" DIA. SIDE HOLES

**NUMBER OF POSITIONS**

(CONTACTS PER ROW)

**INSULATOR MATERIAL**

- 0= PBT, BLUE
- 2= PBT, GREEN
- 3= PBT, BLACK
- 1= PPS, BROWN
- 5= PPS, BLACK
- 6= PPS, GREEN
- 7= PPS, BROWN

**PLATING (SEE TABLE 1)**

**TABLE 1 (PLATING):**

ALL PLATINGS HAVE .000050" NICKEL UNDERPLATE

	CONTACT SURFACE	TERMINATION	PLATING MODIFICATION CODE
MP	.000010" GOLD	.000010" GOLD OVERALL	OMIT
	.000030" GOLD	.000010" GOLD OVERALL	G
MPSL	.000010" GOLD	.000100" PURE TIN, MATTE	K
	.000030" GOLD	.000100" PURE TIN, MATTE	GK
MPL	.000100" PURE TIN, MATTE OVERALL		K

(MPL PLATING AVAILABLE WITH PHOSPHOR BRONZE CONTACTS ONLY)

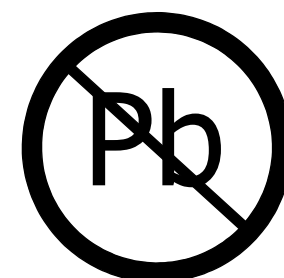
**TABLE 2 (PHOSPHOR BRONZE CONTACTS):**

INSULATOR MATERIAL CODE	OPERATING TEMPERATURE	PROCESSING TEMPERATURE
0, 2, 3	-65°C TO +125°C	260°C FOR 10 SEC MAX (230°C, 30 SEC)
1, 5, 6, 7	-65°C TO +125°C	260°C FOR 120 SEC MAX

**TABLE 3 (BERYLLIUM COPPER CONTACTS):**

INSULATOR MATERIAL CODE	OPERATING TEMPERATURE	PROCESSING TEMPERATURE
0, 2, 3	-65°C TO +125°C	260°C FOR 10 SEC MAX (230°C, 30 SEC)
1, 5, 6, 7	-65°C TO +150°C	260°C FOR 120 SEC MAX

**CUSTOMER COPY**



RoHS COMPLIANT

UNLESS OTHERWISE SPECIFIED:  
DIMENSIONS ARE IN INCHES [MM]  
TOLERANCES: ANGULAR: ± 30'  
.XX=± .02 [5]  
.XXX=± .005 [13]  
.XXXX=± .0005 [13]  
INTERPRET DIMENSIONS AND TOLERANCING PER: ASME Y14.5M-2009

DRAWN	DATE	NAME
	08/18/11	SE
THE INFORMATION HEREIN CONTAINS PROPRIETARY INFORMATION OF SULLINS ELECTRONICS AND IS NOT TO BE REPRODUCED, USED OR DISCLOSED TO OTHERS FOR ANY PURPOSE EXCEPT AS SPECIFICALLY AUTHORIZED IN WRITING BY AN OFFICER OF SULLINS ELECTRONICS.		
SCALE: 2:1		

		TITLE	
		EDGECARD, .100 CC HP	
PART NUMBER		MP__-100-__-DR-H_	
SIZE	CAGE CODE	DWG. NO.	REV
C	54453	C11872	A
SCALE: 2:1		SHEET 3 OF 3	