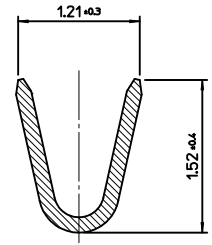
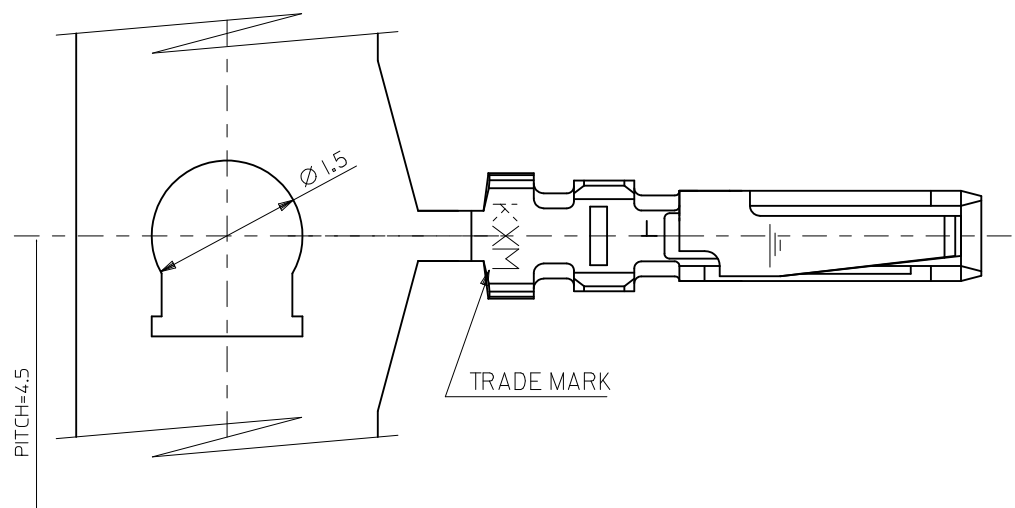
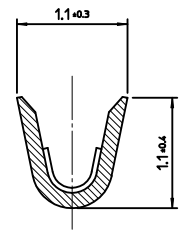


10 9 8 7 6 5 4 3 2 1

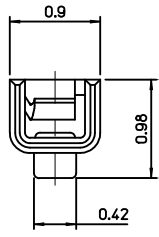
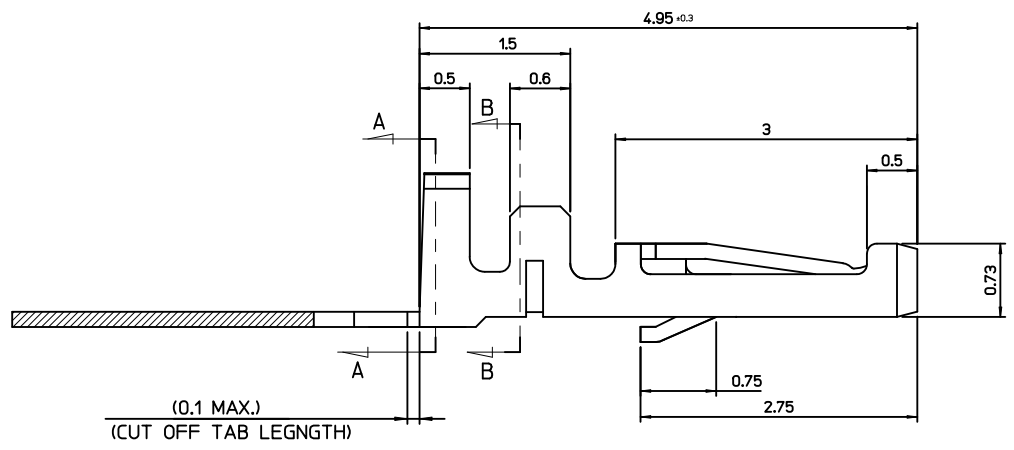
F  
E  
D  
C  
B  
A



**SECTION A-A**



**SECTION B-B**



**NOTES**

1. APPLICABLE HOUSING : 104085-0420
2. MATERIAL : PHOSPHOR BRONZE, 0.15mm THICK'
3. FINISH : PRE-TIN PLATED  
0.8~1.8 MICROMETER MINIMUM, TIN (Sn) OVER  
0.3~0.8 MICROMETER COPPER
4. APPLICABLE WIRE RANGE: AWG#28 -#32

**ORDER NUMBER 104505-8103**

**NEW RELEASED**  
 IEC NO: 2011/01/28  
 DRWNG: CCHIN  
 CHK'D: SH. CHU  
 APPR:

QUALITY SYMBOLS  
 ▽=0  
 ◻=0

GENERAL TOLERANCES (UNLESS SPECIFIED)	
	mm
4 PLACES	± 0.15
3 PLACES	± 0.20
2 PLACES	± 0.25
1 PLACE	± 0.30
ANGULAR ± 1°	

DIMENSION STYLE	
MM ONLY	
DRAWN BY	DATE
JB. JIN	2010/11/13
CHECKED BY	DATE
SH. CHU	2010/11/13
APPROVED BY	DATE
YSOO. KIM	2010/11/13
MATERIAL NO.	
1045058103	

SCALE	
DESIGN UNITS	
METRIC	
THIRD ANGLE PROJECTION	
TITLE	
1.25 W-T-B CONN. CRIMP REC' TERMINAL (L=4.95MM)	
MOLEX INCORPORATED	
DOCUMENT NO.	SHEET NO.
SD-104505-002	1 OF 01

9 8 7 6 5 4 3 2 1