

# SAH. Clamping bolts

Steel



## BASE

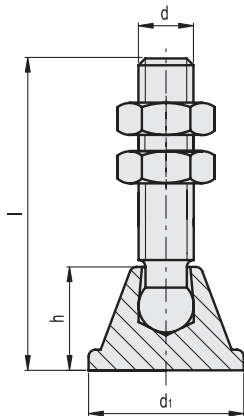
Zinc-plated steel.

## THREADED STEM

Zinc-plated steel.

## NUTS

Zinc-plated steel.



**METRIC**

Code	Description	d	d1	h	l	⚖
GG.AU120	SAH.M5x36	M5	14	9.5	36	10
GG.AU121	SAH.M6x45	M6	16	10	45	17
GG.AU122	SAH.M8x65	M8	18	12	65	30
GG.AU123	SAH.M10x75	M10	20	14	75	56
GG.AU124	SAH.M12x85	M12	24	16	85	47
GG.AU125	SAH.M12x125	M12	24	16	125	95

# SAH-SST Clamping bolts

Stainless steel



## BASE

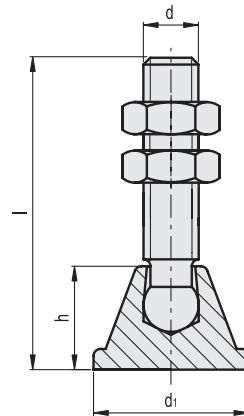
AISI 304 stainless steel.

## THREADED STEM

AISI 304 stainless steel.

## NUTS

AISI 304 stainless steel.



**INOX STAINLESS STEEL**

**METRIC**

Code	Description	d	d1	h	l	⚖
GG.AU520	SAH-SST-M5x36	M5	14	9.5	36	10
GG.AU521	SAH-SST-M6x45	M6	16	10	45	17
GG.AU522	SAH-SST-M8x65	M8	18	12	65	30

- 1
- 2
- 3
- 4
- 5
- 6
- 7
- 8
- 9
- 10
- 11
- 12
- 13
- 14
- 15
- 16
- 17
- 18

Toggle clamps