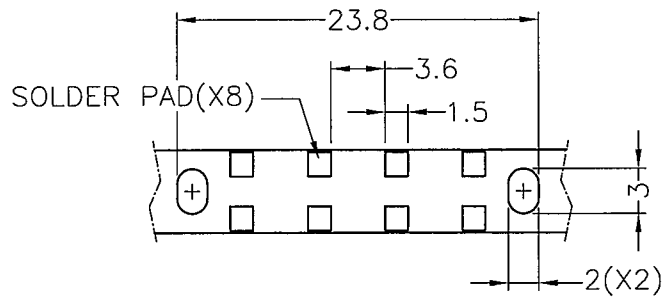
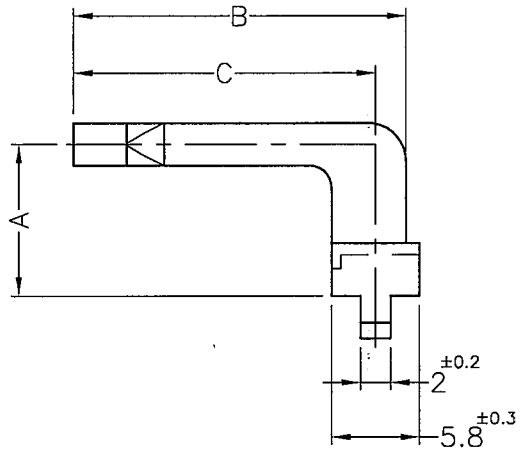
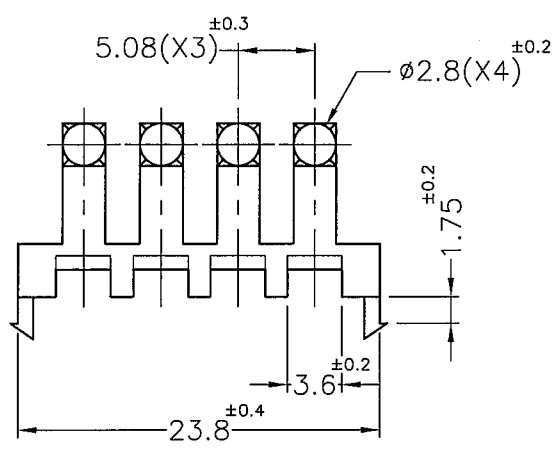


DIM.	TOL
5mm DOWN	±0.2
5~20mm	±0.3
20~40mm	±0.4
40~60mm	±0.5
60~100mm	±0.8
100mm UP	±1.0

REVISIONS			
REV	DESCRIPTION	DATE	BY



RECOMMEND PCB LAYOUT

PART NO.	A	B	C
LPE4-5-16	5	16	14
LPE4-5-19	5	19	17
LPE4-5-22	5	22	20
LPE4-10-16	10	16	14
LPE4-10-19	10	19	17
LPE4-10-22	10	22	20
LPE4-15-16	15	16	14
LPE4-15-19	15	19	17
LPE4-15-22	15	22	20

NOTE:1. SHRINKING IS NORMAL STATUS.
 內縮為正常現象。
 2. MADE OF EQUIVALENT MATERIAL.
 均可使用同等材質。

<p>康揚企業股份有限公司 KANG YANG HARDWARE ENTERPRISE CO., LTD. 康揚塑膠(東莞)有限公司 KANG YANG PLASTIC(DONG GUAN) CO., LTD. 康哲電腦配件(吳江)有限公司 KANG CHE COMPUTER COMPONENTS(WUJIANG) CO., LTD.</p>				TITLE	LIGHT PIPE	SPEC. DWG.	
				MATERIAL	PC UL94V-2	DATE	2003.06.05
				FINISH		DRAWN	SCOTT
				COLOR	TRANSPARENT	CHECK	李柏宥
PART NUMBER	SEE ABOVE	DRAWING NUMBER	LPE4-XX-XX	UNLESS OTHERWISE SPECIFIED TOLERANCE	SEE ABOVE	APPROVED	Kang
SIZE	A4	SCALE	2:1	UNIT	mm	REV	A