

1

2

3

4

5

6

7

A

B

C

D

E

F

A

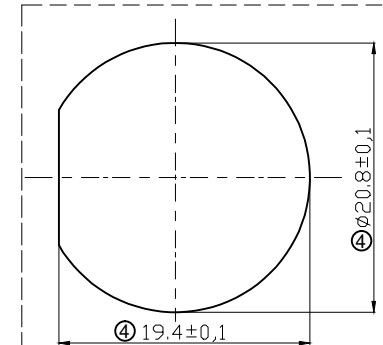
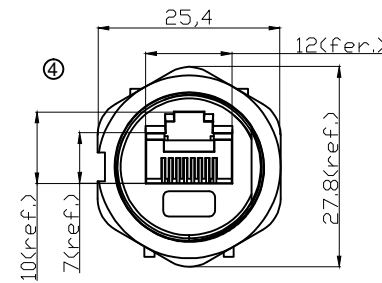
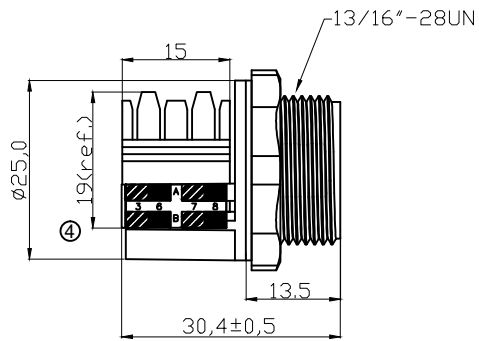
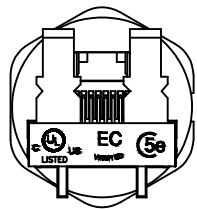
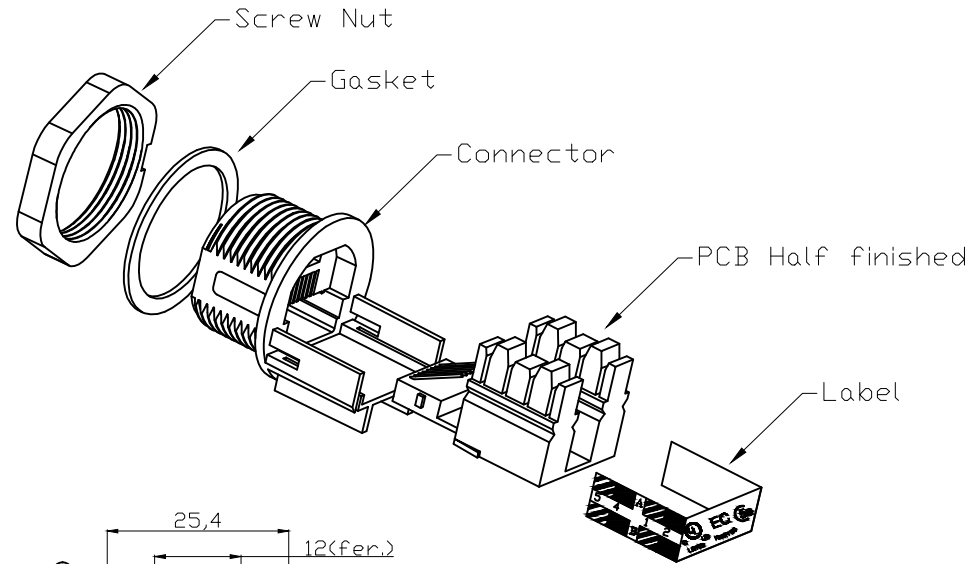
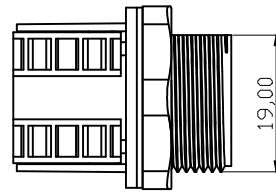
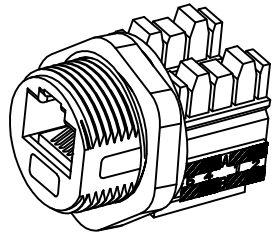
B

C

D

E

F



Recommended Panel Cut-Out

**NOTES:**

Waterproof Rate:IP67  
 Connector: ABS, Black  
 Screw Nut: Nylon+GF,Black  
 Gasket: EPDM 70  
 Use panel thickness max: 2.5mm  
 24AWG wires for cable  
 Packing: Tray

**RoHS compliant**  
 Unit: mm

| Scale     | Free |     |              |            |         | Date     | Name       | Customer-No.     |
|-----------|------|-----|--------------|------------|---------|----------|------------|------------------|
| TOLERANCE |      |     |              |            |         | Drawn    | 08.11.2007 | Hellwig          |
| ±0.25mm   |      |     |              |            |         | Approved | 23.06.2014 | Joanna           |
|           |      | ④   | Add spec     | 23.06.2014 | Joanna  |          |            | ASSMANN WSW-No.  |
|           |      | ③   | Update       | 25.02.2014 | Amy     |          |            | <b>A-RJ45 KU</b> |
|           |      | ②   | Update       | 28.06.2010 | Dean    |          |            | Drawing-No.      |
|           |      | ①   | Drawn        | 08.11.2007 | Hellwig |          |            | ③ ASS 1552 CO    |
|           |      | Id. | Modification | Date       | Name    |          |            | rev04            |
|           |      |     |              |            |         |          |            | Replace          |
|           |      |     |              |            |         |          |            | Sheet            |

**ASSMANN**  
 WSW components

1

2

3

4

5

6

7

SV637