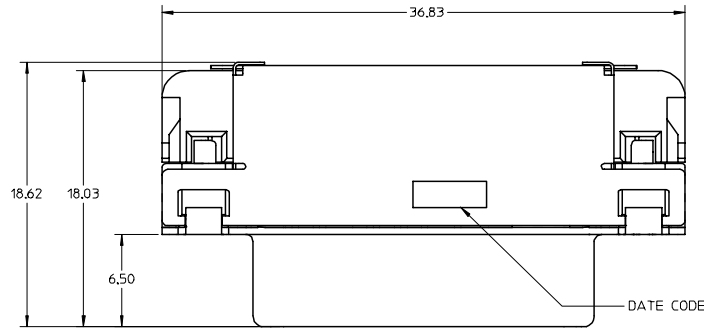
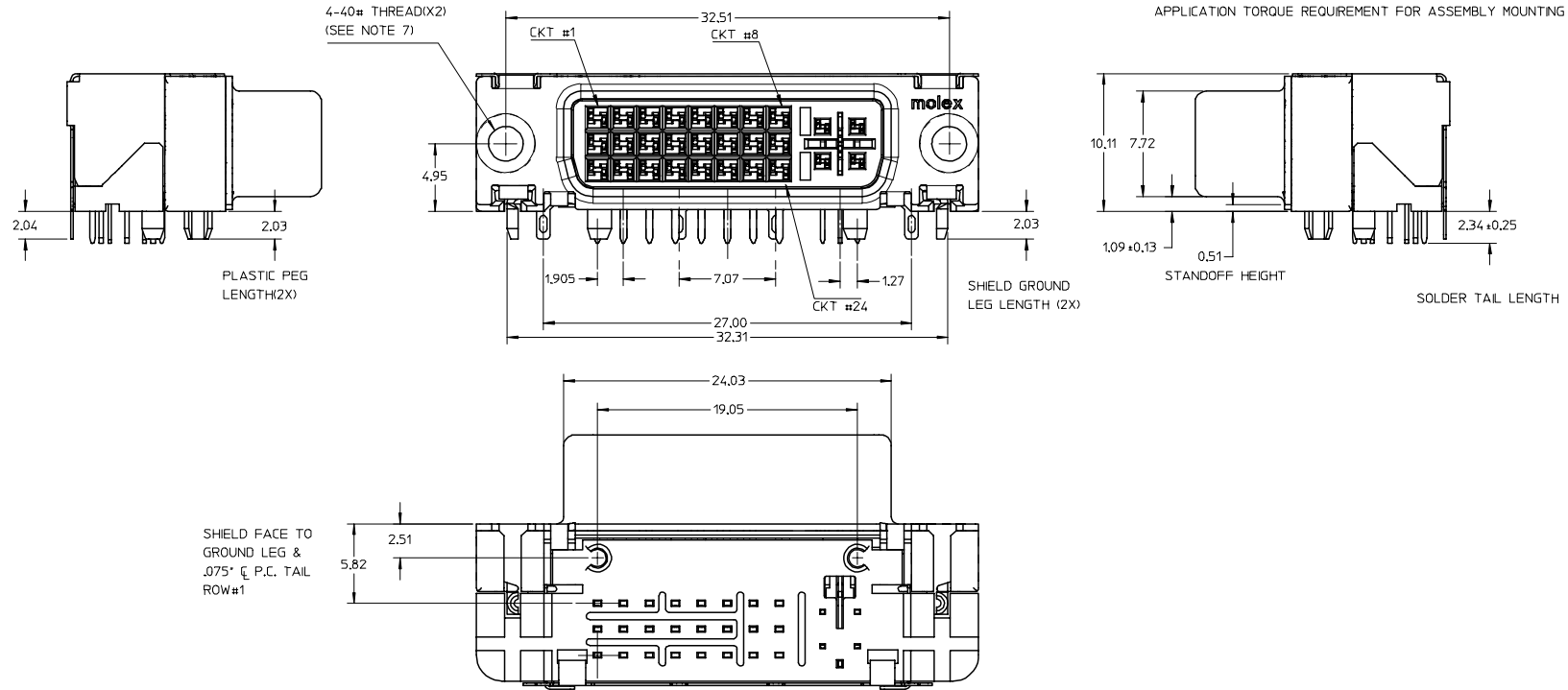


J
I
H
G
F
E
D
C
B
A

J
I
H
G
F
E
D
C
B
A



1. MATERIALS:
 FRONT SHIELD -- DEEP DRAW STEEL
 BACK SHIELD -- STAINLESS STEEL
 HOUSING -- GLASS FILLED POLYMER,NATURE(IVORY WHITE),UL 94v-0.
 TAIL ALIGNER -- GLASS FILLED POLYMER, NATURE(IVORY WHITE),UL 94v-0.
 CONTACTS -- COPPER ALLOY
 MICROCROSS GROUND -- COPPER ALLOY
2. PLATING SHEET 2
3. PRODUCT CONFIRMS TO MOLEX PRODUCT SPECIFICATION NUMBER PS-74320-001. REFER TO THIS SPECIFICATION FOR SPACING ON A P.C.B.OF TWO OR MORE CONNECTORS WITH USING A CABLE OR AN ADAPTER ASSEMBLY.
4. SEE SHEET 2 FOR RECOMMENDED PANEL CUT-OUT AND P.C.B.LAYOUT.
5. PARTS WILL BE PACKAGED IN TRAYS PER PK-74320-010
6. PRODUCT CONFIRMS TO DDWG DVI SPECIFICATION,REFER TO THIS SPECIFICATION FOR CONNECTOR MATING DIMENSIONS.
7. RECOMMENDED MOUNTING HARDWARE IS MOLEX P/N 88780-6066 OR 82007-0300 OR 71781-0001 REFER TO PRODUCT SPECIFICATION NUMBER PS-74320-001 FOR THE APPLICATION TORQUE REQUIREMENT FOR ASSEMBLY MOUNTING HARDWARE.



NEW RELEASE EC NO: SH2005-0035 DRAWN: DXUE 2004/08/19 CHKD: 2004/08/20 APPR: YTYAP 2004/08/20	DESCRIPTION REV A	QUALITY SYMBOLS ▽ - 0 ◁ - 0	GENERAL TOLERANCES (UNLESS SPECIFIED) <table border="1"> <thead> <tr> <th></th> <th>mm</th> <th>INCH</th> </tr> </thead> <tbody> <tr> <td>4 PLACES</td> <td>± ---</td> <td>± ---</td> </tr> <tr> <td>3 PLACES</td> <td>± ---</td> <td>± ---</td> </tr> <tr> <td>2 PLACES</td> <td>± 0.25</td> <td>± ---</td> </tr> <tr> <td>1 PLACE</td> <td>± 0.25</td> <td>± ---</td> </tr> </tbody> </table> ANGULAR ± 3 ° DRAFT WHERE APPLICABLE MUST REMAIN WITHIN DIMENSIONS		mm	INCH	4 PLACES	± ---	± ---	3 PLACES	± ---	± ---	2 PLACES	± 0.25	± ---	1 PLACE	± 0.25	± ---	SCALE 4:1 DESIGN UNITS METRIC DIMENSION STYLE MM ONLY DRAWN BY DXUE DATE 2004/8/5 CHECKED BY DATE	THIRD ANGLE PROJECTION REVISE ON CAD ONLY TITLE DVI-I RIGHT ANGLE RECEPTACLE CONNECTOR WITH EMI SHIELDING MOLEX MOLEX INCORPORATED MATERIAL NO. 743201304 DOCUMENT NO. SD-74320-050 SHEET NO. 1 OF 2
			mm	INCH																
		4 PLACES	± ---	± ---																
		3 PLACES	± ---	± ---																
2 PLACES	± 0.25	± ---																		
1 PLACE	± 0.25	± ---																		
APPROVED BY DATE			THIS DRAWING CONTAINS INFORMATION THAT IS PROPRIETARY TO MOLEX INCORPORATED AND SHOULD NOT BE USED WITHOUT WRITTEN PERMISSION																	

12

11

10

9

8

7

6

5

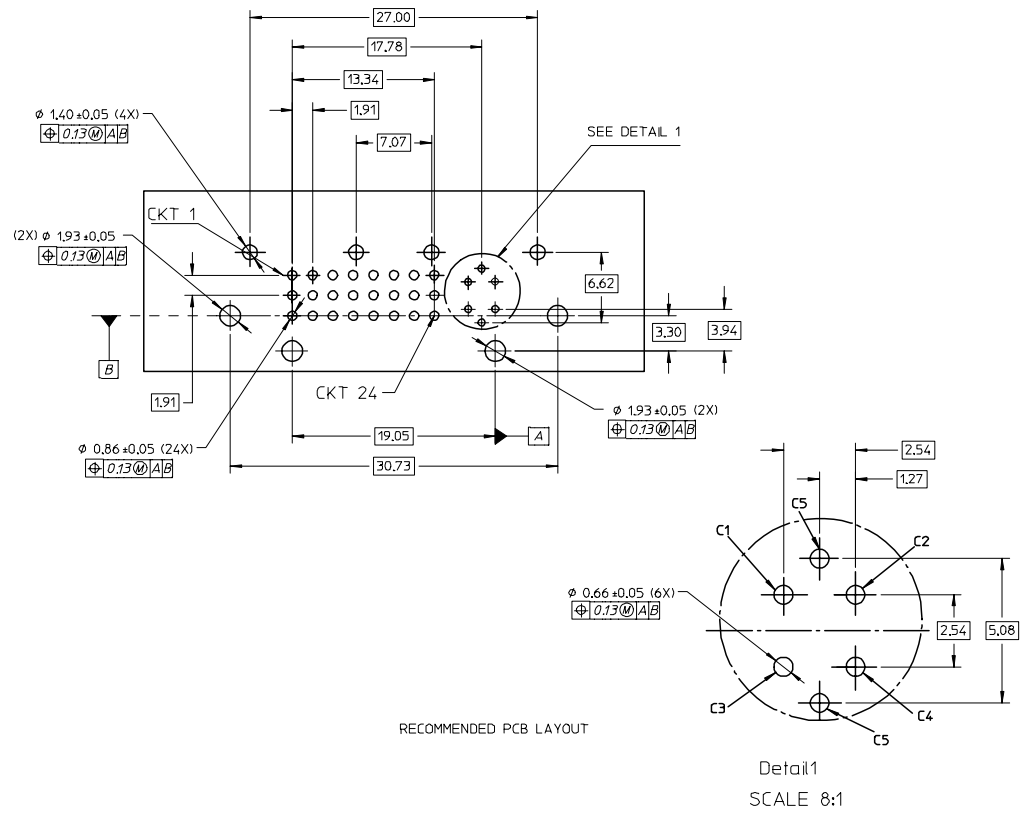
4

3

2

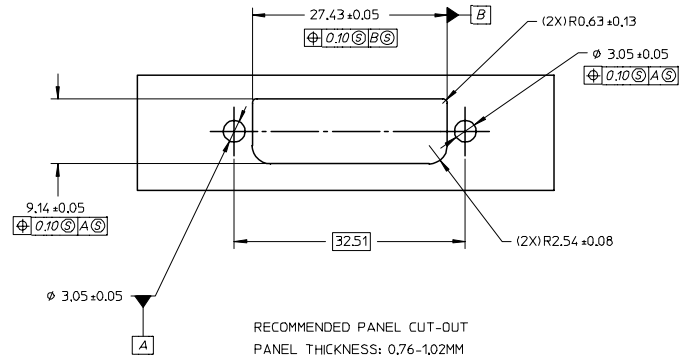
J
I
H
G
F
E
D
C
B
A

J
I
H
G
F
E
D
C
B
A



RECOMMENDED PCB LAYOUT

Detail1
SCALE 8:1



RECOMMENDED PANEL CUT-OUT
PANEL THICKNESS: 0.76-1.02MM

PLATING OPTIONS:
 PLATING OPTION #1:
 FRONT SHIELD -- 150u"/3.75um MIN, BRIGHT TIN OVER
 50u"/1.27um MIN, NICKEL OVER COPPER FLASH.
 BACK SHIELD -- 50u"/1.27um MIN, BRIGHT TIN OVER
 50u"/1.27um MIN, NICKEL OVERALL.

 .075"/1.91mm CONTACTS -- SELECT GOLD FLASH AND
 100u"/2.50um MIN, SELECT TIN
 OVER 50u"/1.27um MIN, NICKEL OVERALL.
 .100"/2.54mm CONTACTS -- SELECT GOLD FLASH AND
 100u"/2.50um MIN, SELECT TIN,
 OVER 50u"/1.27um MIN, NICKEL OVERALL.
 MICROGROUND -- 30u"/0.75um MIN SELECT GOLD AND
 100u"/2.50um MIN, SELECT TIN,
 OVER 50u"/1.27um MIN, NICKEL OVERALL.

NEW RELEASE EC NO: SH2005-0035 DRWN: DXUE 2004/08/19 CHKD: 2004/08/20 APPR: YTYAP 2004/08/20	DESCRIPTION A	QUALITY SYMBOLS	GENERAL TOLERANCES (UNLESS SPECIFIED)	SCALE 4:1	DESIGN UNITS METRIC	THIRD ANGLE PROJECTION	REVISE ON CAD ONLY															
		▼ -0 ▽ -0	<table border="1"> <tr> <th></th> <th>mm</th> <th>INCH</th> </tr> <tr> <td>4 PLACES</td> <td>± ---</td> <td>± ---</td> </tr> <tr> <td>3 PLACES</td> <td>± ---</td> <td>± ---</td> </tr> <tr> <td>2 PLACES</td> <td>± 0.25</td> <td>± ---</td> </tr> <tr> <td>1 PLACE</td> <td>± 0.25</td> <td>± ---</td> </tr> </table>		mm	INCH	4 PLACES	± ---	± ---	3 PLACES	± ---	± ---	2 PLACES	± 0.25	± ---	1 PLACE	± 0.25	± ---	DIMENSION STYLE MM ONLY	TITLE	DVI-I RIGHT ANGLE RECEPTACLE CONNECTOR WITH EMI SHIELDING	
				mm	INCH																	
			4 PLACES	± ---	± ---																	
3 PLACES	± ---	± ---																				
2 PLACES	± 0.25	± ---																				
1 PLACE	± 0.25	± ---																				
DRAFT WHERE APPLICABLE		APPROVED BY	DATE	MATERIAL NO.	DOCUMENT NO.	SHEET NO.																
MUST REMAIN WITHIN DIMENSIONS		2004/8/5		743201304	SD-74320-050	2 OF 2																