

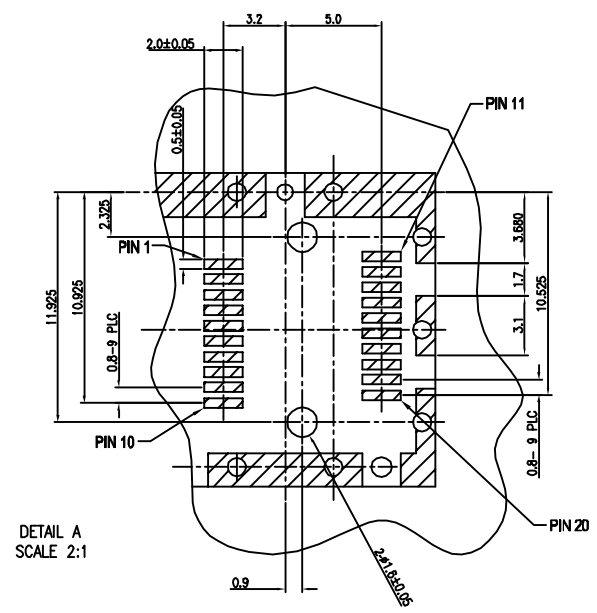
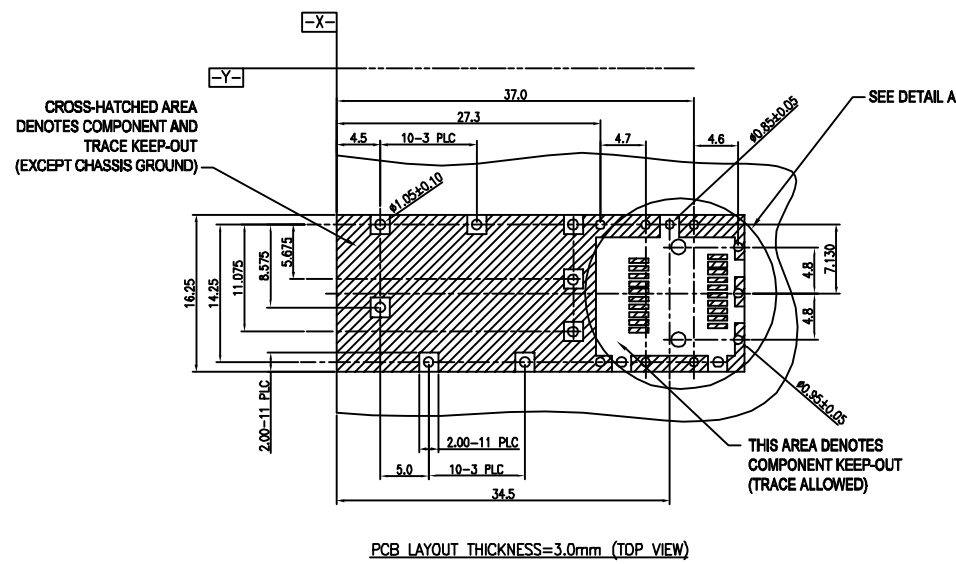
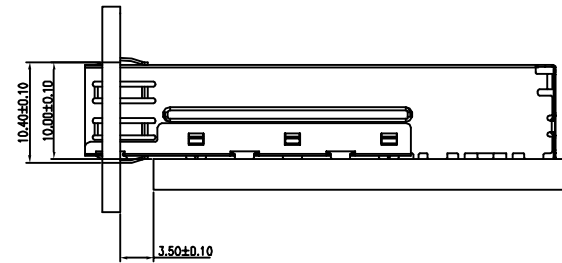
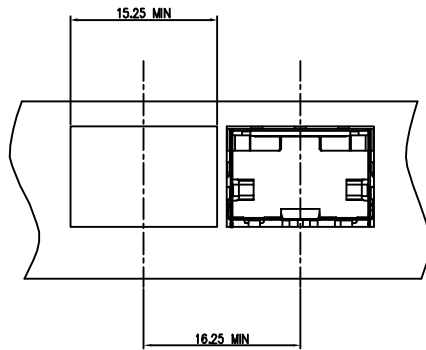
Qty per:	Tray	Carton		
	45	900		
PART NUMBER : SFPCAGE002-L				
No.	DESCRIPTION	Q'ty	MATERIAL	PLATING
01	CAGE TOP	1	COPPER ALLOY	Nickel
02	CAGE BOTTOM	1	COPPER ALLOY	Nickel

← MM (INCH) → TOLERANCES EXCEPT AS NOTED	
MM	±
.0 ± 0.2	±
.00 ± 0.15	±
.000 ± 0.075	±
ANGLES ± 0.5	
 THIRD ANGLE PROJECTION	

RoHS Compliant			
TITLE		(Non-Logo)	
SFP CAGE 1 BY 1 PRESSFIT			
DFTO Jack	DRAWING NO. SFPCAGE002-L	SIZE	REV
DATE 8/03/06	/PART NO.	A3	0
SCALE : 1:1	DO NOT SCALE DRAWING	SHEET 1	OF 2

8 | 7 | 6 | 5 | 4 | 3 | 2 | 1

H
G
F
E
D
C
B
A



8 | 7 | 6 | 5 | 4 | 3 | 2 | 1

H
G
F
E
D
C
B
A

DETACHED LISTS	← MM (INCH) →	RoHS Compliant			
	TOLERANCES EXCEPT AS NOTED				
	MM		TITLE	(Non-Logo)	
	.0 ± 0.2 ±		SFP CAGE 1 BY 1 PRESSFIT		
.00 ± 0.15 ±		DFTO Jack	DRAWING NO. SFPCAGE002-L	SIZE A3	REV 0
.000 ± 0.075 ±		DATE 8/03/06	/PART NO.		
ANGLES ± 0.5		SCALE : 1:1	DO NOT SCALE DRAWING	SHEET 2	OF 2